

Subject: [radiojove-data] 24 Nov 2015 non-lo-B

From: Dave Typinski <davetyp@typnet.net>

Date: 11/25/2015 21:36

To: RadioJove-Data <radiojove-data@lists.nasa.gov>

Here's some weak non-lo-B from Tuesday morning.

RCP dominant L bursting 1043-1108 UTC from 16 to 23 MHz, pos then neg drifting emission envelope, no modulation lanes visible.

Nothing visible in the 20 MHz strip chart.

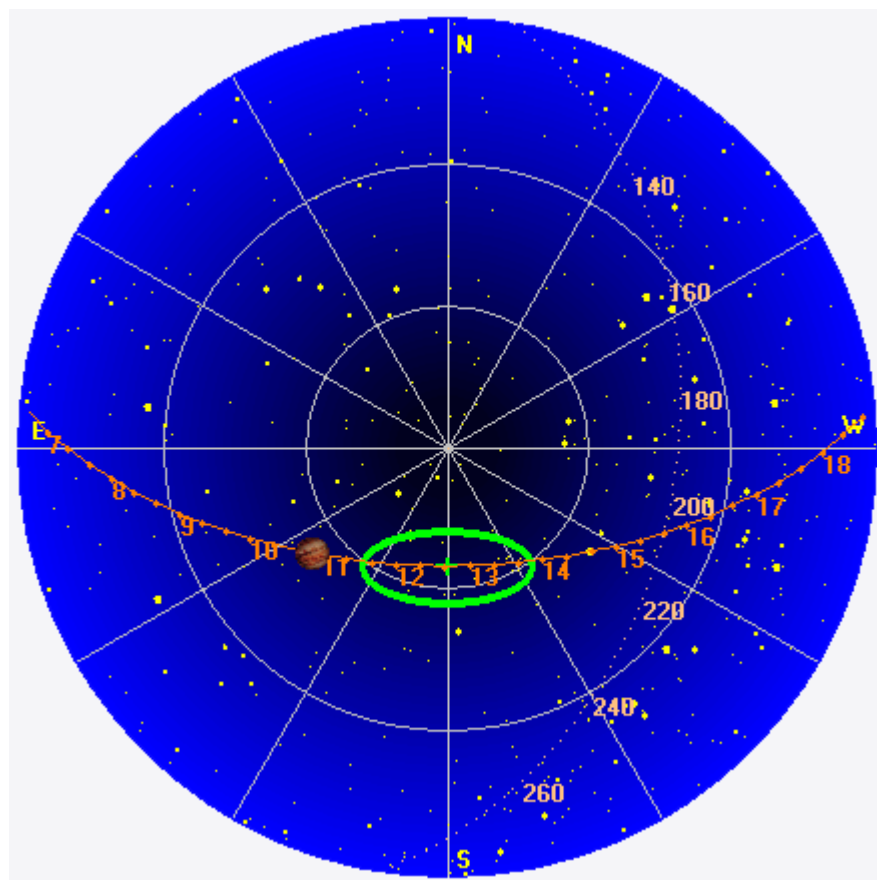
Jupiter was -30° to -24° off axis.

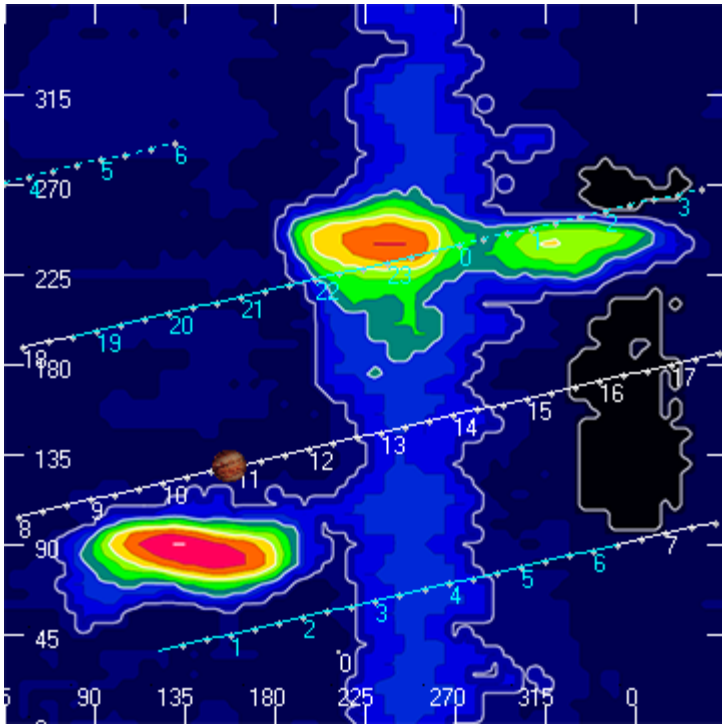
Jupiter was leading the Sun by 72° .

--

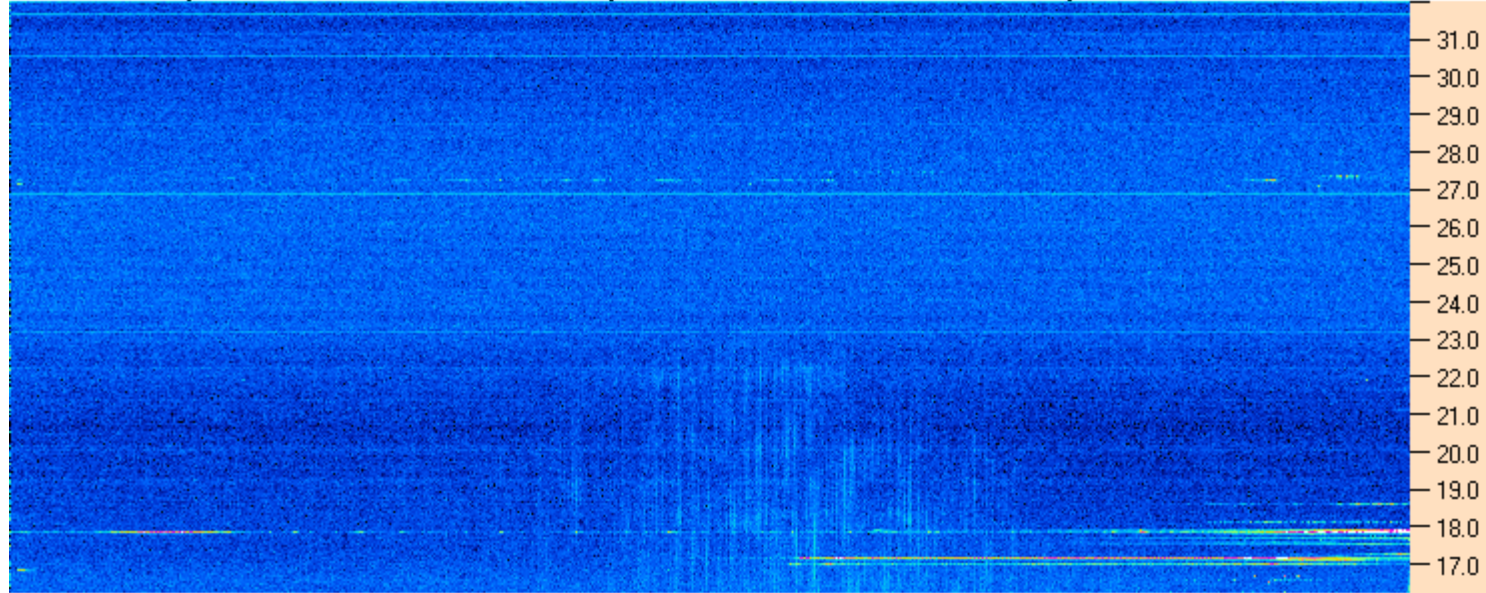
Dave

AJ4CO Observatory 24 Nov 2015, log entry 484





AJ4CO Observatory 24 Nov 2015 - DPS 30 kHz IF on TFD Array in CP Mode - RCP MC +13 dB Correction Array 2014 12 18 B.csv Offset 2050 Gain 5.0



10:15:00 10:25:43 10:36:26 10:47:09 10:57:52 11:08:34 11:19:17 11:30:00

AJ4CO Observatory 24 Nov 2015 - DPS 30 kHz IF on TFD Array in CP Mode - LCP MC +13 dB Correction Array 2014 12 18 B.csv Offset 2050 Gain 5.0

