

Subject: [radiojove-data] 24 Nov 2015 non-Io-A

From: Dave Typinski <davetyp@typnet.net>

Date: 11/25/2015 21:37

To: RadioJove-Data <radiojove-data@lists.nasa.gov>

Here's some weak non-Io-A from Tuesday morning.

RCP dominant L bursting 1213-1221 UTC from 18 to 27 MHz, negative drifting emission envelope, no modulation lanes visible.

Nothing visible in the 20 MHz strip chart.

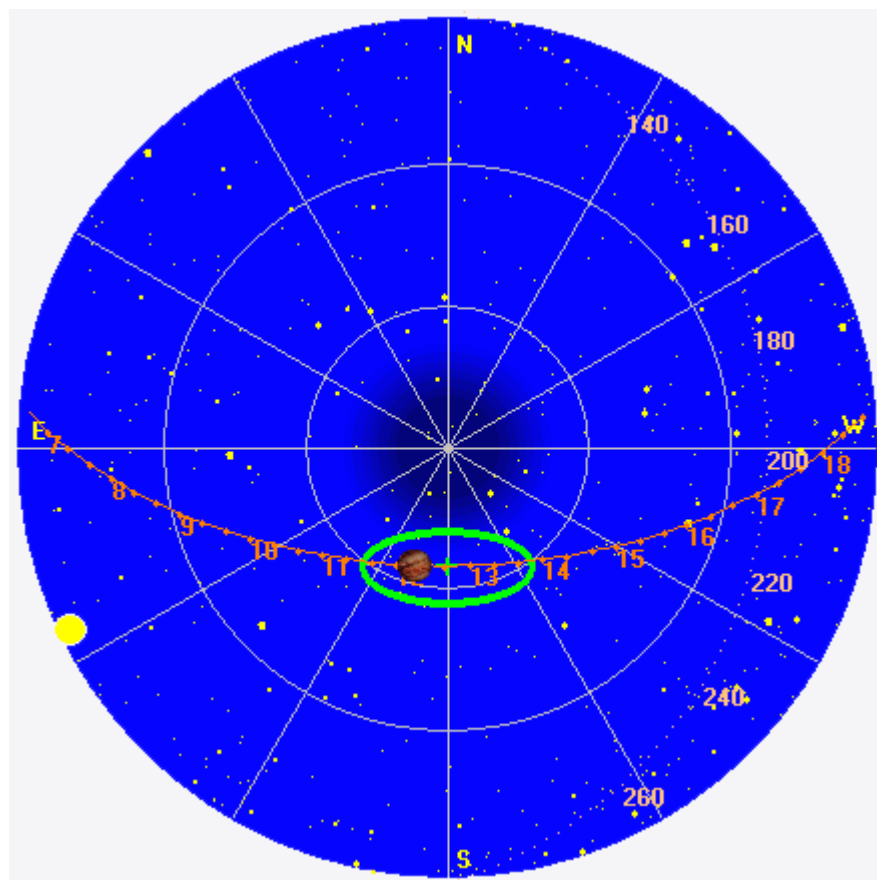
Jupiter was -8° to -6° off axis.

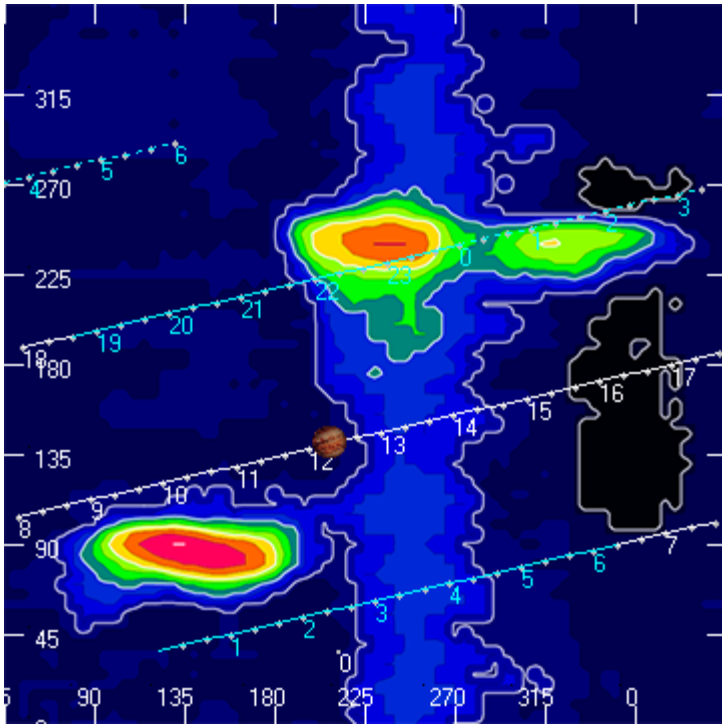
Jupiter was leading the Sun by 72° .

--

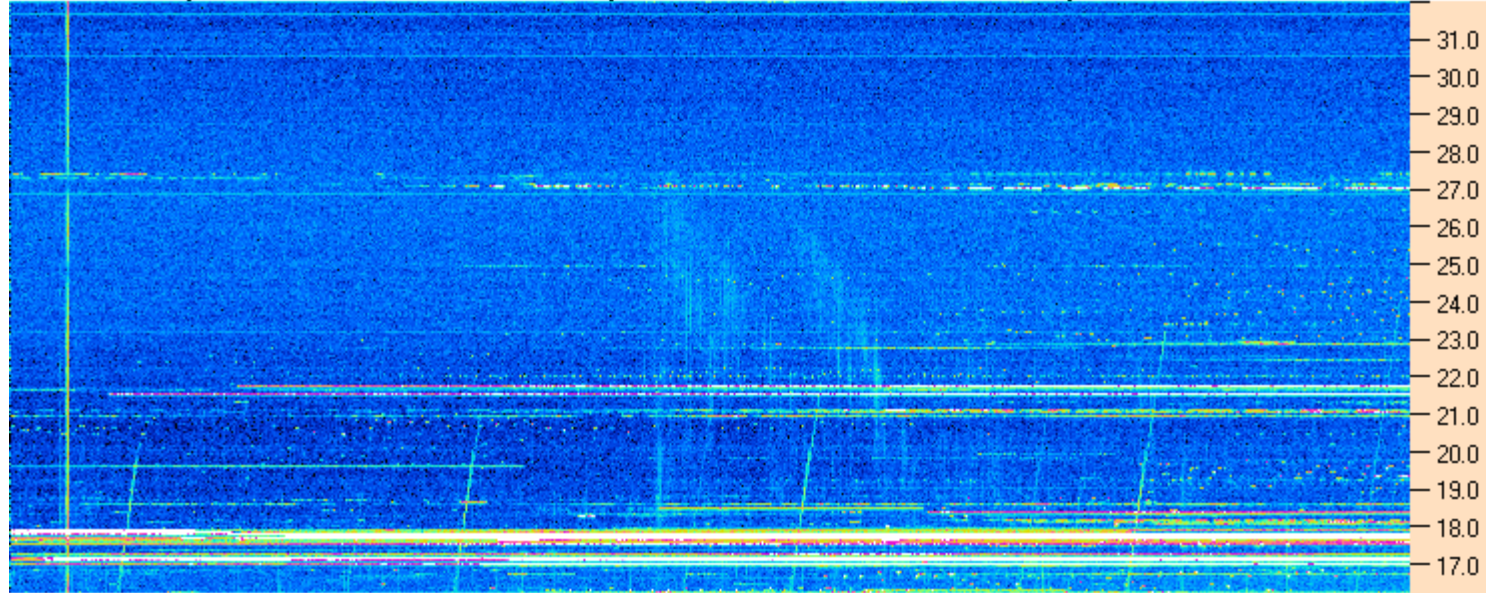
Dave

AJ4CO Observatory 24 Nov 2015, log entry 485





AJ4CO Observatory 24 Nov 2015 - DPS 30 kHz IF on TFD Array in CP Mode - RCP MC +13 dB Correction Array 2014 12 18 B.csv Offset 2050 Gain 5.0



AJ4CO Observatory 24 Nov 2015 - DPS 30 kHz IF on TFD Array in CP Mode - LCP MC +13 dB Correction Array 2014 12 18 B.csv Offset 2050 Gain 5.0

