

Subject: [radiojove-data] 22 Nov 2015 non-Io-A

From: Dave Typinski <davetyp@typnet.net>

Date: 11/23/2015 21:24

To: RadioJove-Data <radiojove-data@lists.nasa.gov>

Continuing the trend, here's some more non-Io-A, this time from Sunday morning.

RCP dominant L bursting 1106-1226 UTC from 16 to 23 MHz, negative drifting emission envelope, no modulation lanes visible.

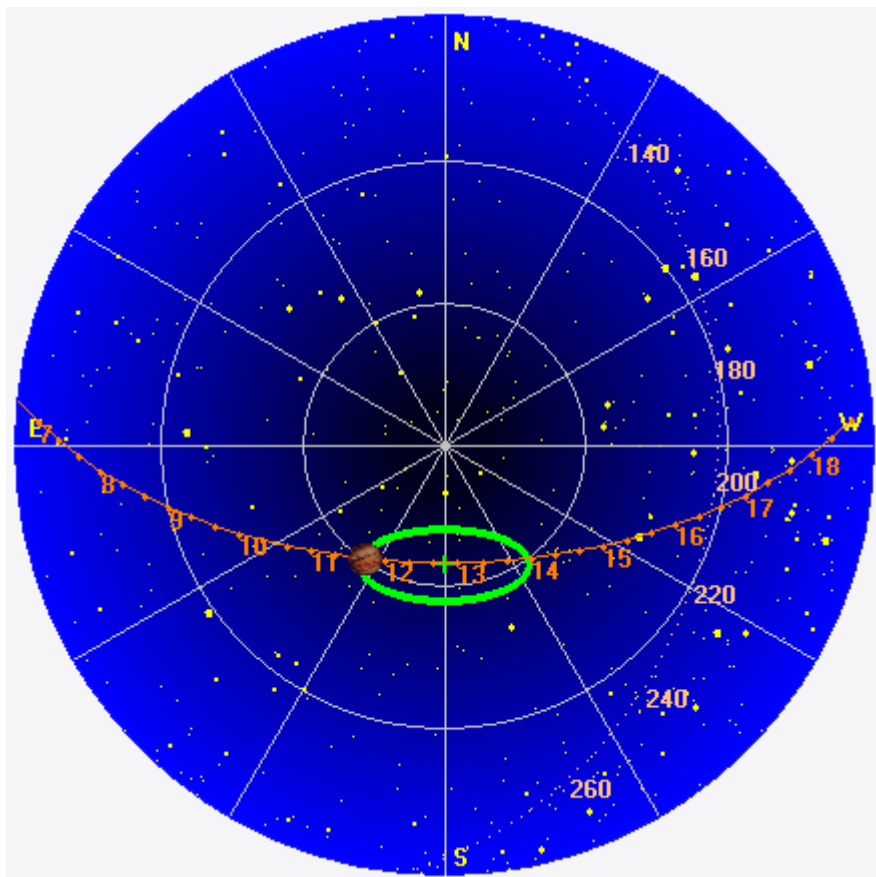
Jupiter was -26° to -6° off axis.

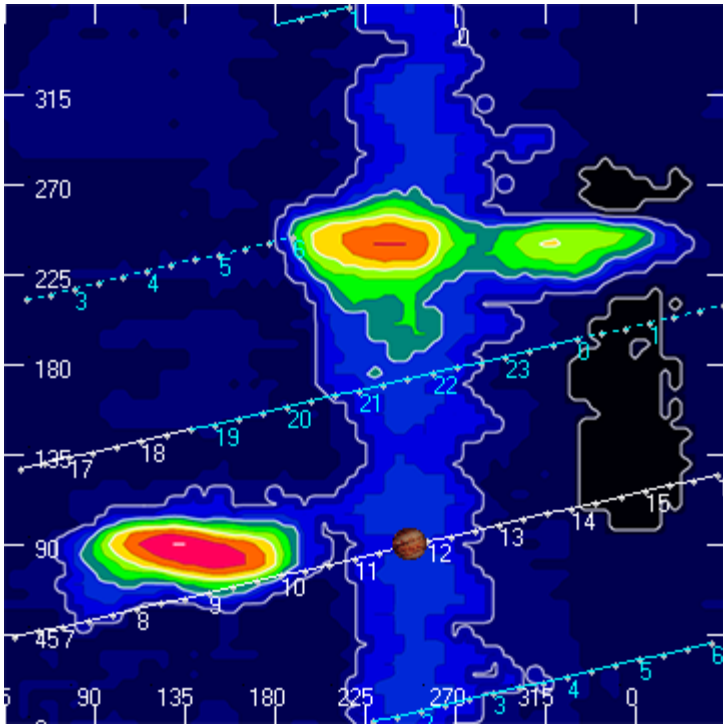
Jupiter was leading the Sun by 70° .

--

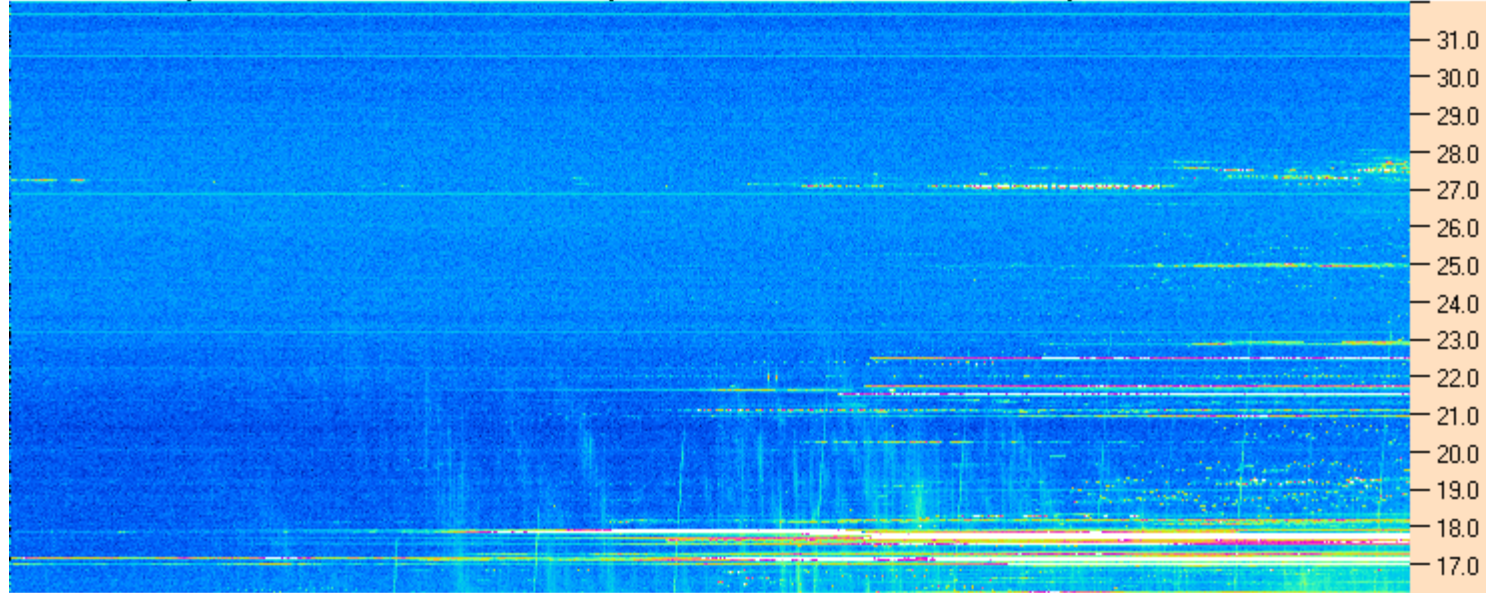
Dave

AJ4CO Observatory 22 Nov 2015, log entry 483





AJ4CO Observatory 22 Nov 2015 - DPS 30 kHz IF on TFD Array in CP Mode - RCP MC +13 dB Correction Array 2014 12 18 B.csv Offset 2020 Gain 5.0



10:45:00 11:02:09 11:19:17 11:36:26 11:53:34 12:10:43 12:27:51 12:45:00

AJ4CO Observatory 22 Nov 2015 - DPS 30 kHz IF on TFD Array in CP Mode - LCP MC +13 dB Correction Array 2014 12 18 B.csv Offset 2020 Gain 5.0

