

Subject: [radiojove-data] 20 Nov 2015 non-Io-A

From: Dave Typinski <davetyp@typnet.net>

Date: 11/23/2015 21:22

To: RadioJove-Data <radiojove-data@lists.nasa.gov>

Here's some non-Io-A from Friday morning.

RCP dominant L bursting 1039-1049 UTC from 16 to 21 MHz, negative drifting emission envelope, no modulation lanes visible.

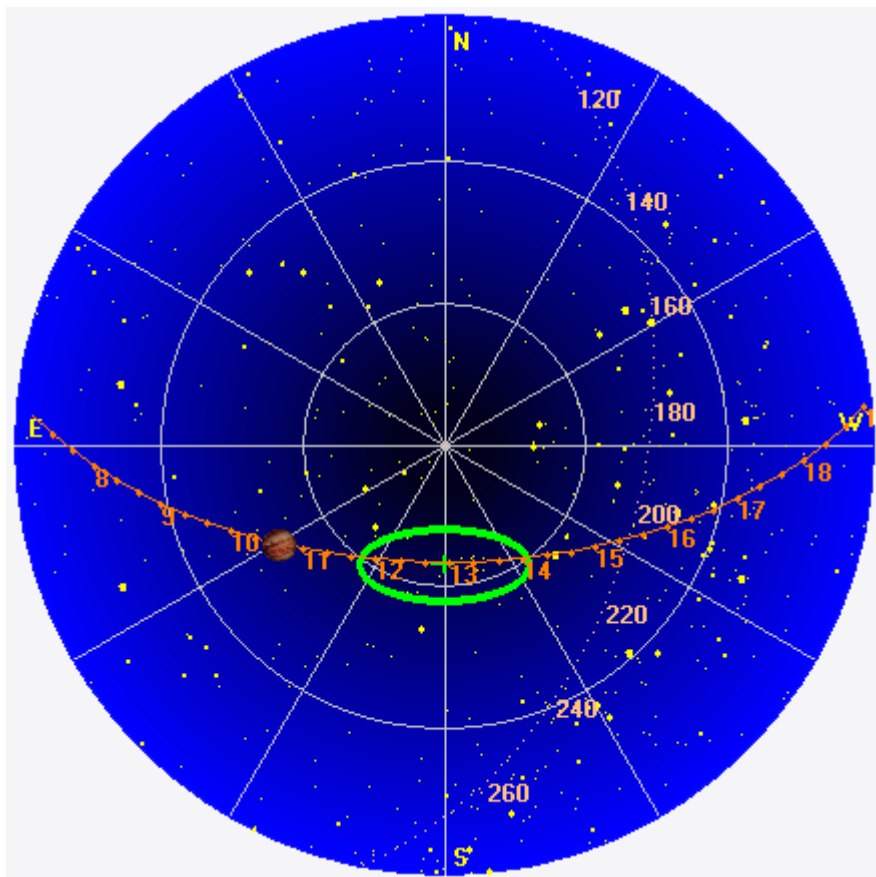
Jupiter was -35° to -32° off axis.

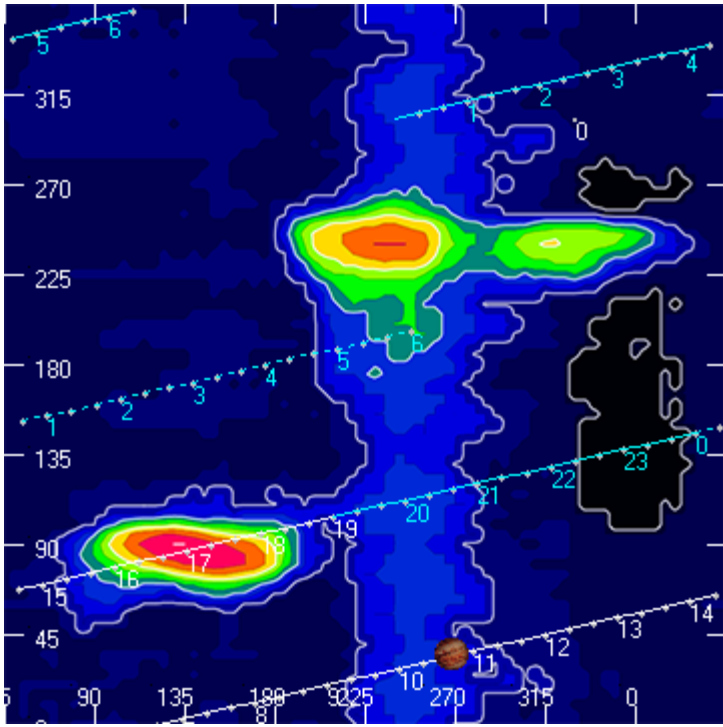
Jupiter was leading the Sun by 68° .

--

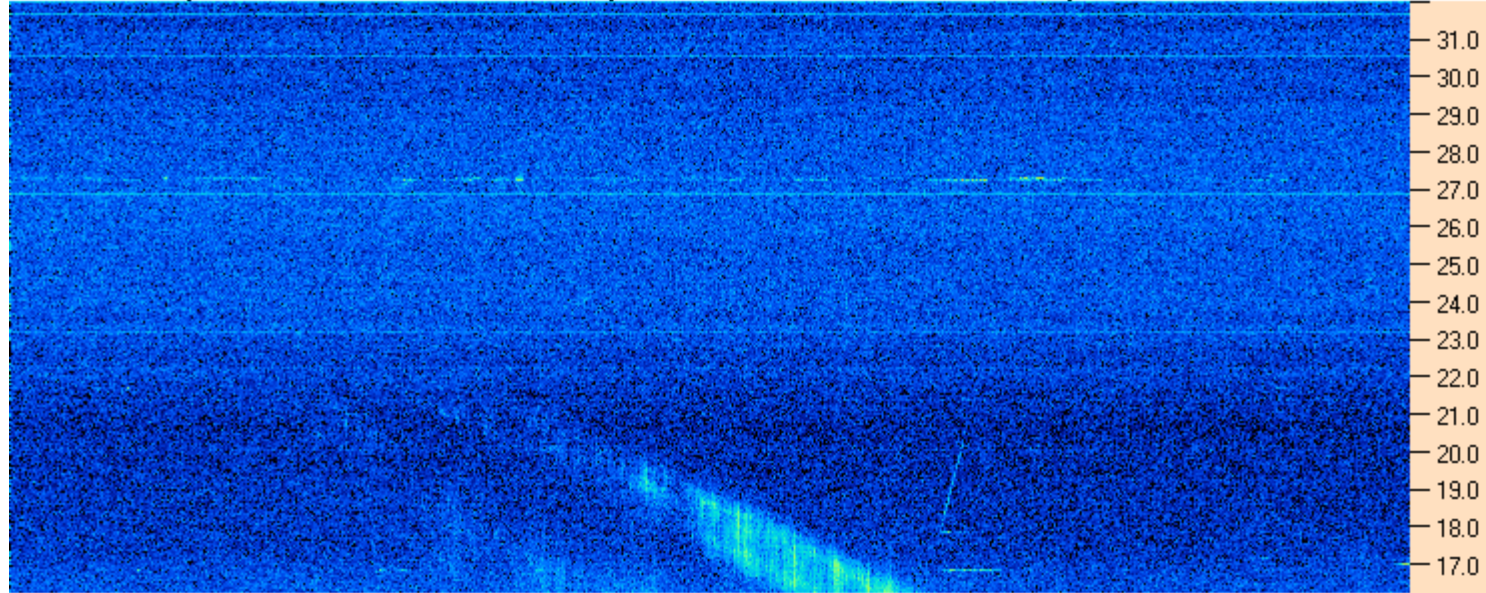
Dave

AJ4CO Observatory 20 Nov 2015, log entry 481





AJ4CO Observatory 20 Nov 2015 - DPS 30 kHz IF on TFD Array in CP Mode - RCP MC +13 dB Correction Array 2014 12 18 B.csv Offset 2050 Gain 5.0



10:30:00 10:34:17 10:38:34 10:42:51 10:47:09 10:51:26 10:55:43 11:00:00

AJ4CO Observatory 20 Nov 2015 - DPS 30 kHz IF on TFD Array in CP Mode - LCP MC +13 dB Correction Array 2014 12 18 B.csv Offset 2050 Gain 5.0

