

**Subject:** [radiojove-data] 29 Oct 2015 Io-A

**From:** Dave Typinski <davetyp@typnet.net>

**Date:** 10/29/2015 22:19

**To:** RadioJove-Data <radiojove-data@lists.nasa.gov>

Here's some very weak, barely visible Io-A from Thursday morning.

RCP dominant L bursting 1031-1215 UTC from 16 to 22 MHz, zero envelope frequency drift, no modulation lanes visible.

Jupiter was  $-55^\circ$  to  $-29^\circ$  off axis.

Jupiter was leading the Sun by  $49^\circ$ .

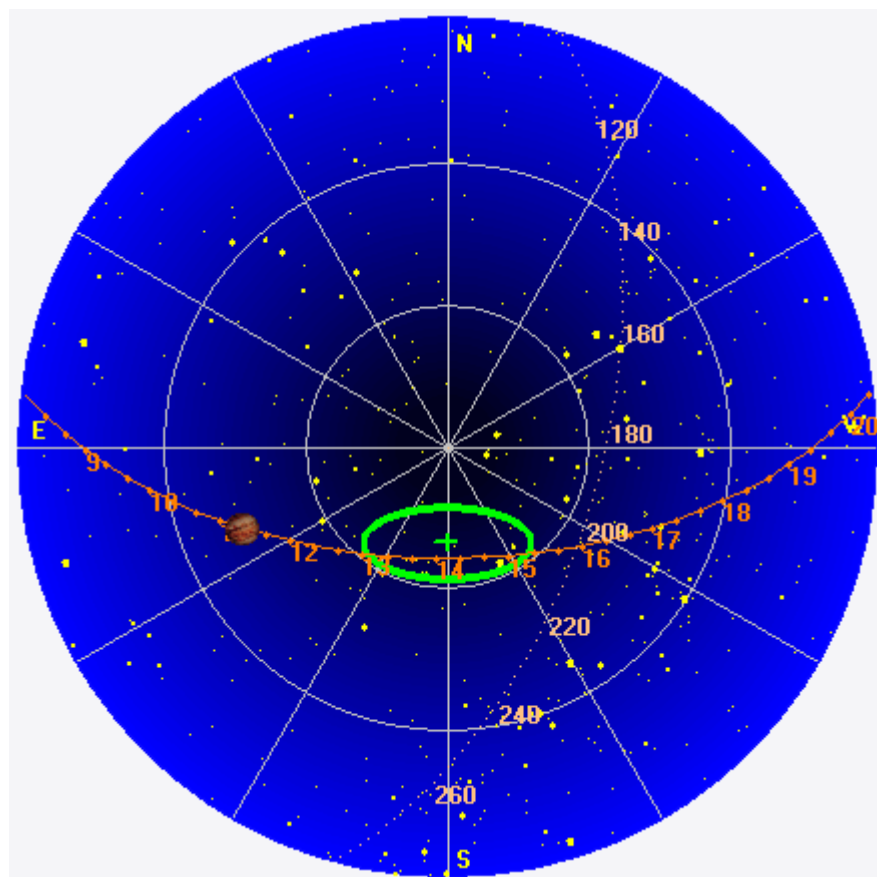
--

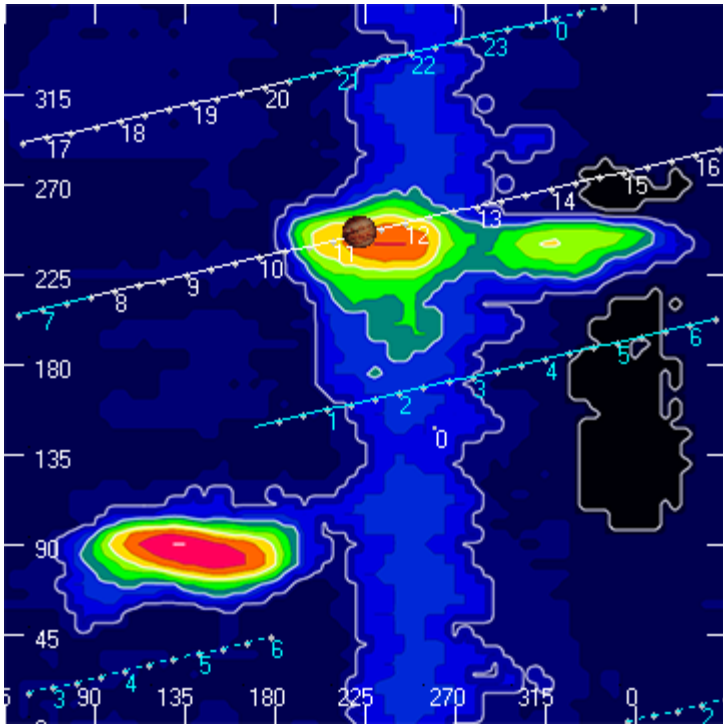
Dave

---

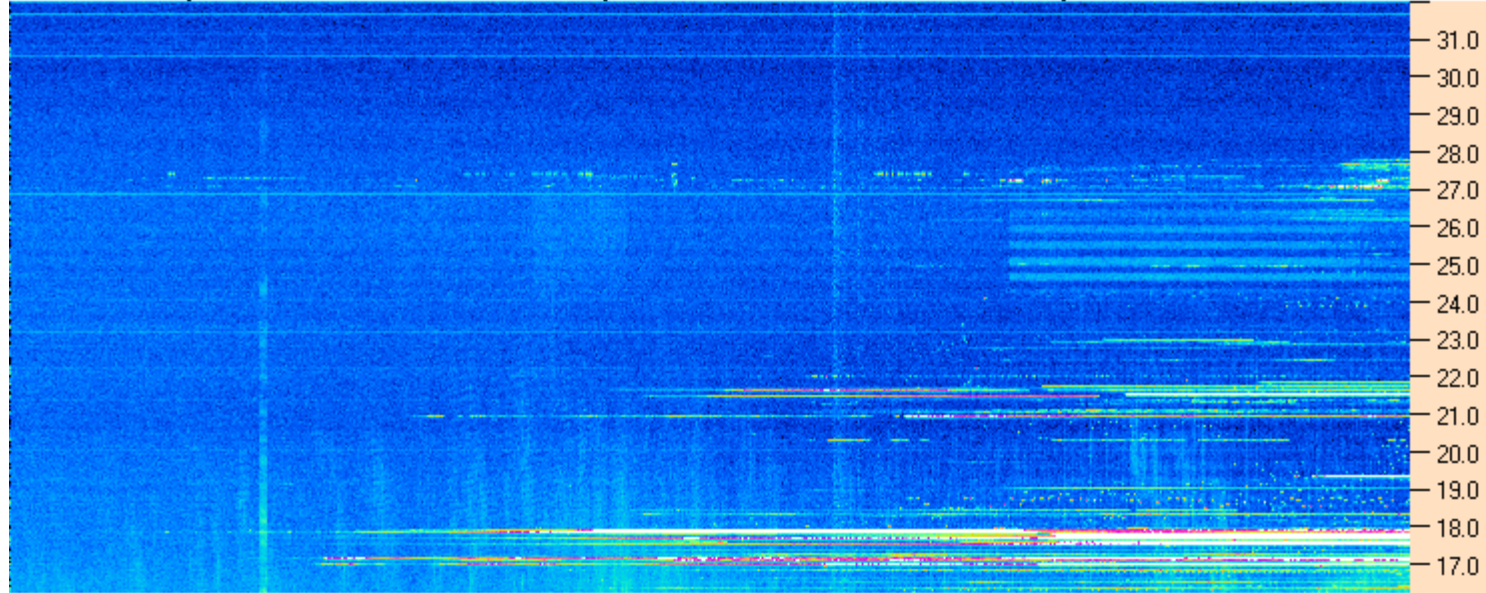
AJ4CO Observatory 29 Oct 2015, log entry 474

---





AJ4CO Observatory 29 Oct 2015 - DPS 30 kHz IF on TFD Array in CP Mode - RCP MC +13 dB Correction Array 2014 12 18 B.csv Offset 2050 Gain 5.0



AJ4CO Observatory 29 Oct 2015 - DPS 30 kHz IF on TFD Array in CP Mode - LCP MC +13 dB Correction Array 2014 12 18 B.csv Offset 2050 Gain 5.0

