

Subject: [radiojove-data] 14 Oct 2015 non-Io-A

From: Dave Typinski <davetyp@typnet.net>

Date: 10/16/2015 19:48

To: RadioJove-Data <radiojove-data@lists.nasa.gov>

Here's some non-Io-A behind the band noise, radar, and radio stations from Wednesday morning.

RCP dominant L bursting 1434-1508 UTC from 16 to 26 MHz, negative frequency drift, no modulation lanes visible.

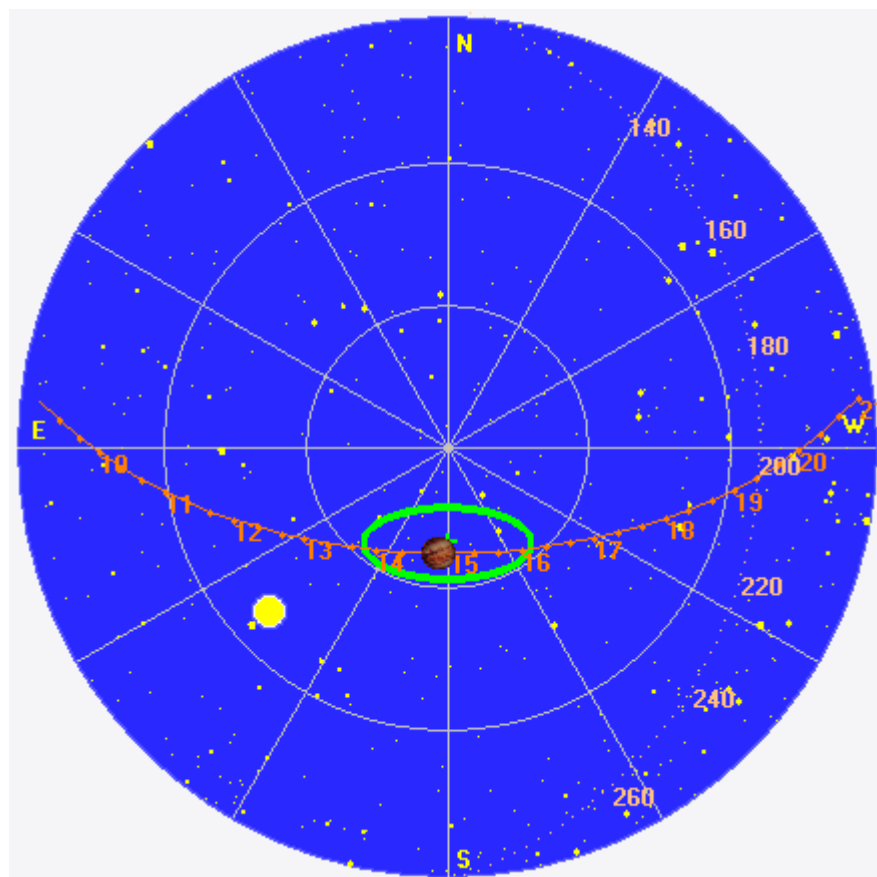
Jupiter was -7° to $+3^\circ$ off axis.

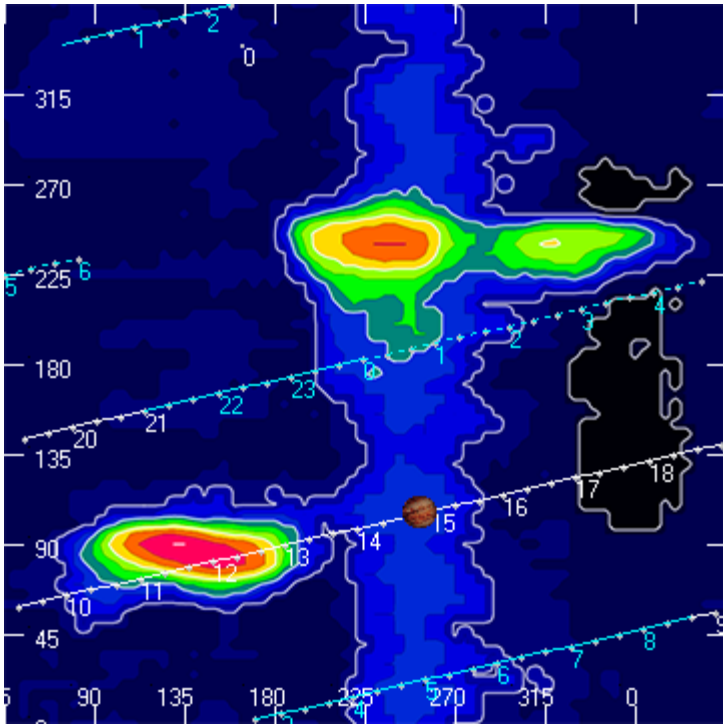
Jupiter was leading the Sun by 37° .

--

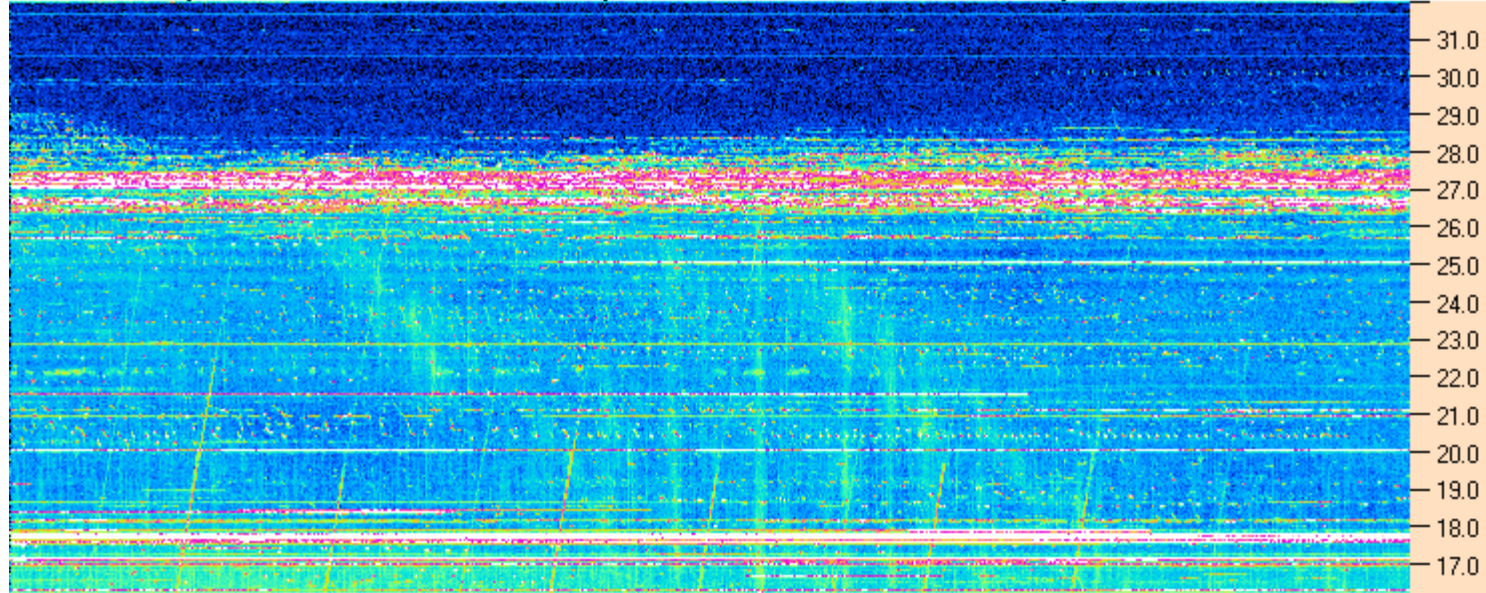
Dave

AJ4CO Observatory 14 Oct 2015, log entry 470





AJ4CO Observatory 14 Oct 2015 - DPS 30 kHz IF on TFD Array in CP Mode - RCP MC +13 dB Correction Array 2014 12 18 B.csv Offset 2075 Gain 5.0



14:25:00 14:31:26 14:37:52 14:44:17 14:50:43 14:57:09 15:03:34 15:10:00

AJ4CO Observatory 14 Oct 2015 - DPS 30 kHz IF on TFD Array in CP Mode - LCP MC +13 dB Correction Array 2014 12 18 B.csv Offset 2075 Gain 5.0

