

Subject: [radiojove-data] 14 Oct 2015 Io-B

From: Dave Typinski <davetyp@typnet.net>

Date: 10/16/2015 19:48

To: RadioJove-Data <radiojove-data@lists.nasa.gov>

Adding to Nathan's very nice report, here's some very weak Io-B from Wednesday morning.

RCP dominant L bursting 1213-1244 UTC from 16 to 22 MHz, zero frequency drift, no modulation lanes visible.

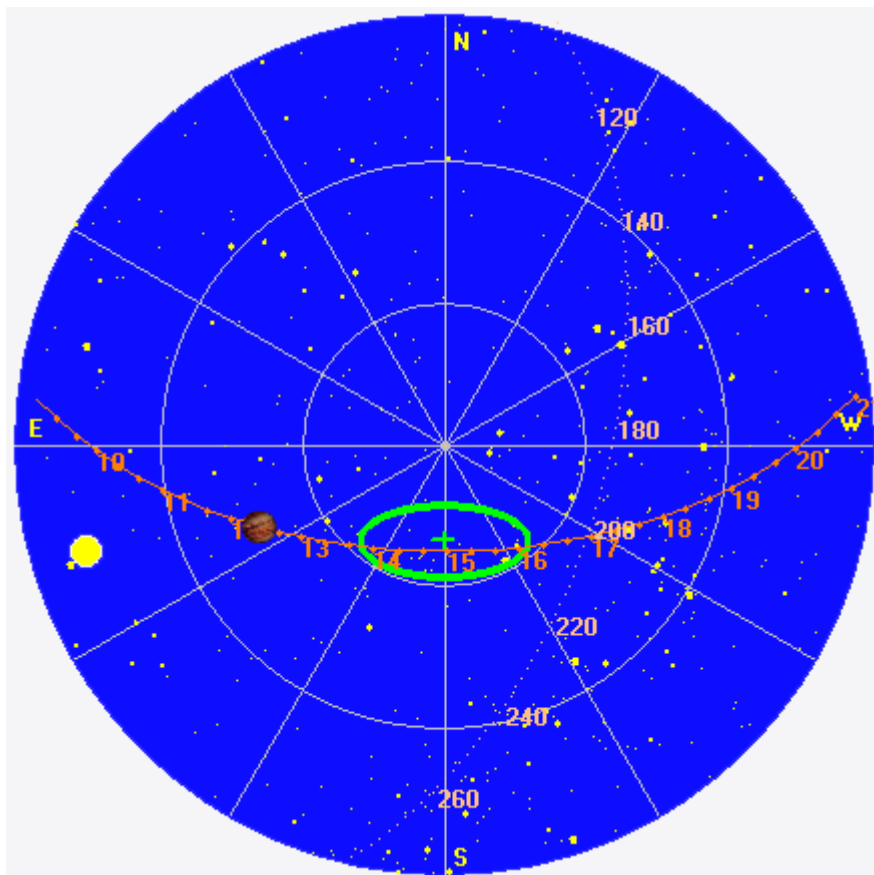
Jupiter was -41° to -34° off axis.

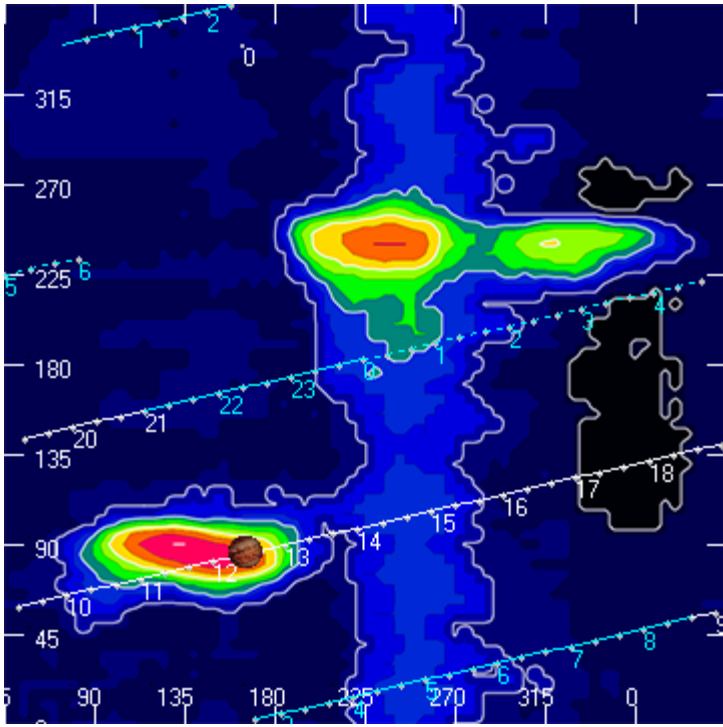
Jupiter was leading the Sun by 37° .

--

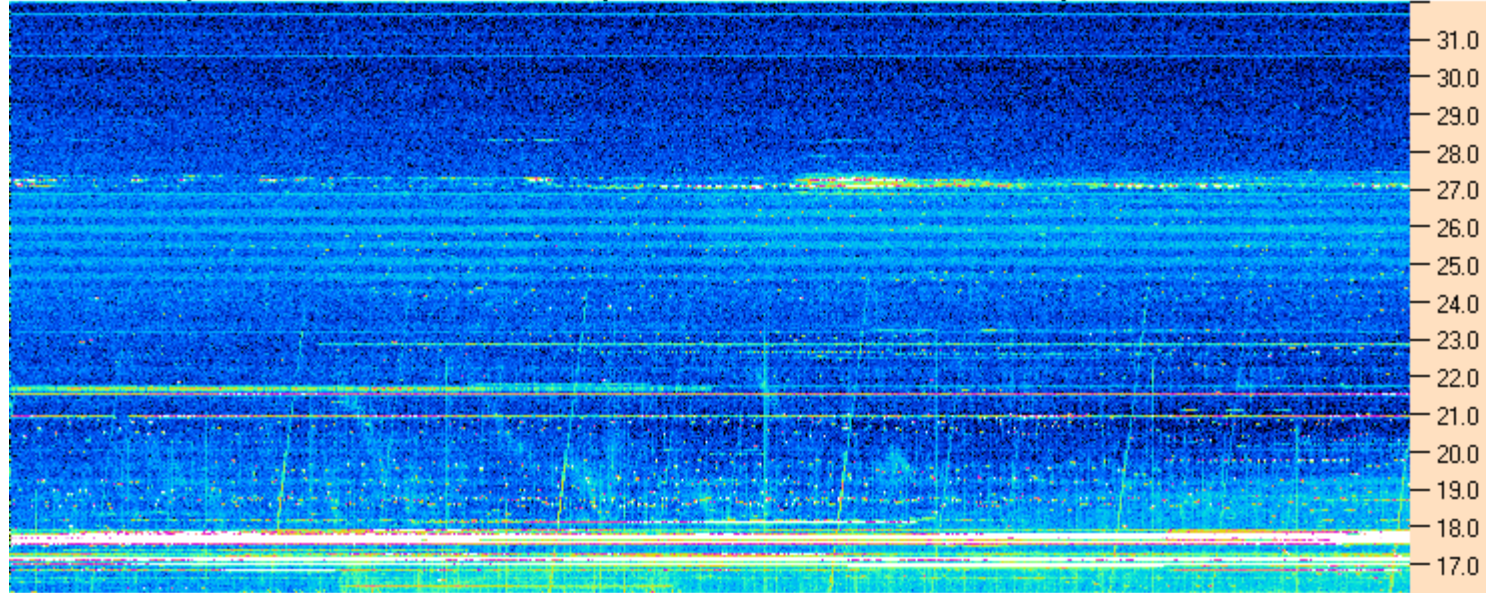
Dave

AJ4CO Observatory 14 Oct 2015, log entry 469





AJ4CO Observatory 14 Oct 2015 - DPS 30 kHz IF on TFD Array in CP Mode - RCP MC +13 dB Correction Array 2014 12 18 B.csv Offset 2075 Gain 7.0



12:00:00 12:08:34 12:17:09 12:25:43 12:34:17 12:42:52 12:51:26 13:00:00

AJ4CO Observatory 14 Oct 2015 - DPS 30 kHz IF on TFD Array in CP Mode - LCP MC +13 dB Correction Array 2014 12 18 B.csv Offset 2075 Gain 7.0

