

Subject: [radiojove-data] 11 Oct 2015 Io-A

From: Dave Typinski <davetyp@typnet.net>

Date: 10/11/2015 23:09

To: RadioJove-Data <radiojove-data@lists.nasa.gov>

Here's some weak Io-A from Sunday morning.

RCP dominant L bursting 1544-1714 UTC from 16 to 26 MHz, vertex late arcs, no modulation lanes visible.

There is some positive offset in the RCP trace of the strip charts -- it's possible that the gain knob on the RCP Jove receiver was disturbed.

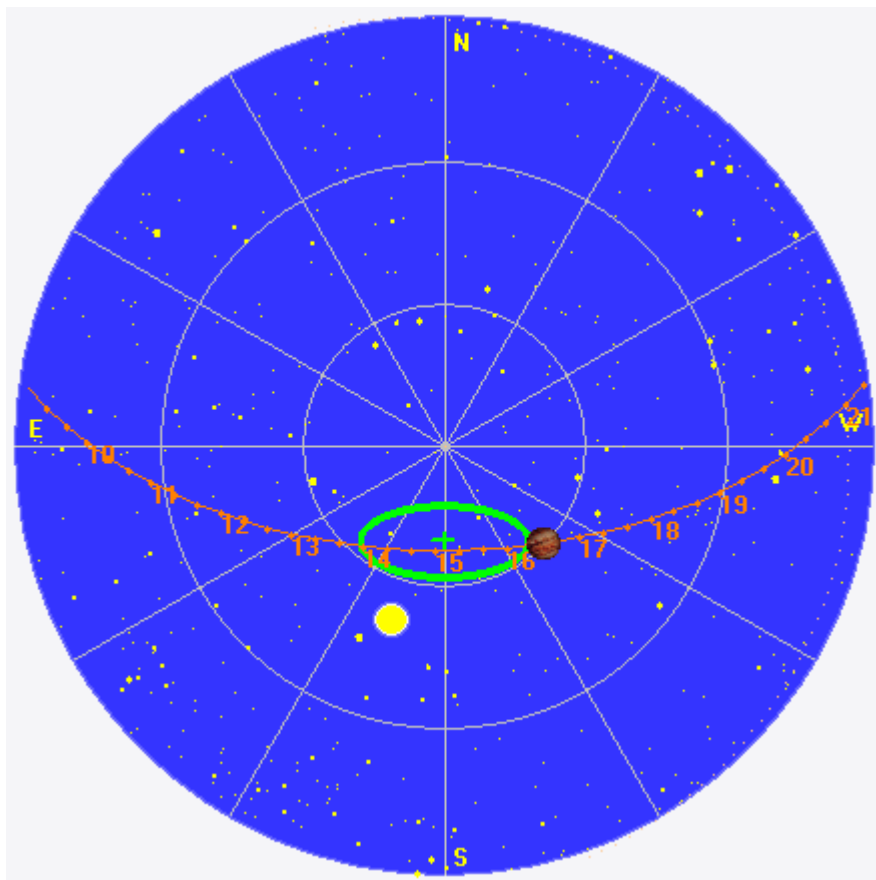
Jupiter was $+9^\circ$ to $+31^\circ$ off axis.

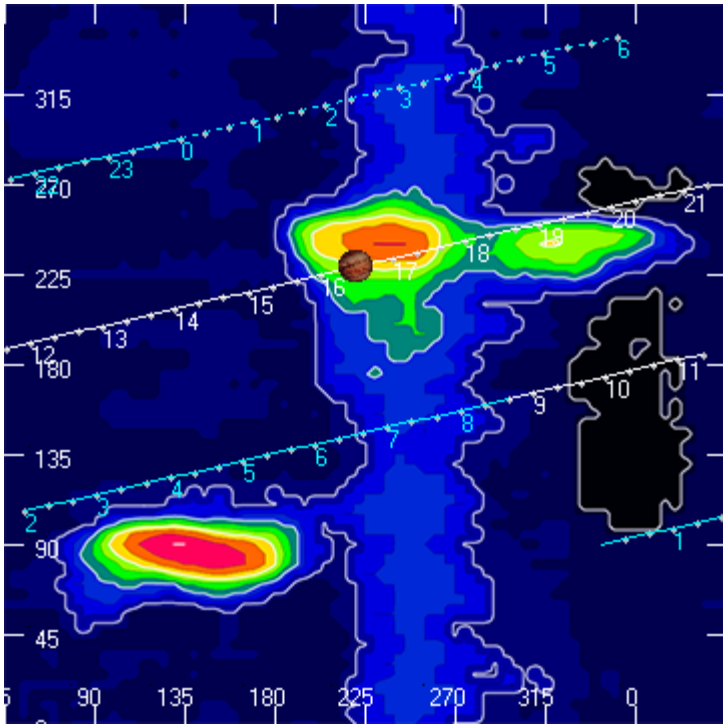
Jupiter was leading the Sun by 35° .

--

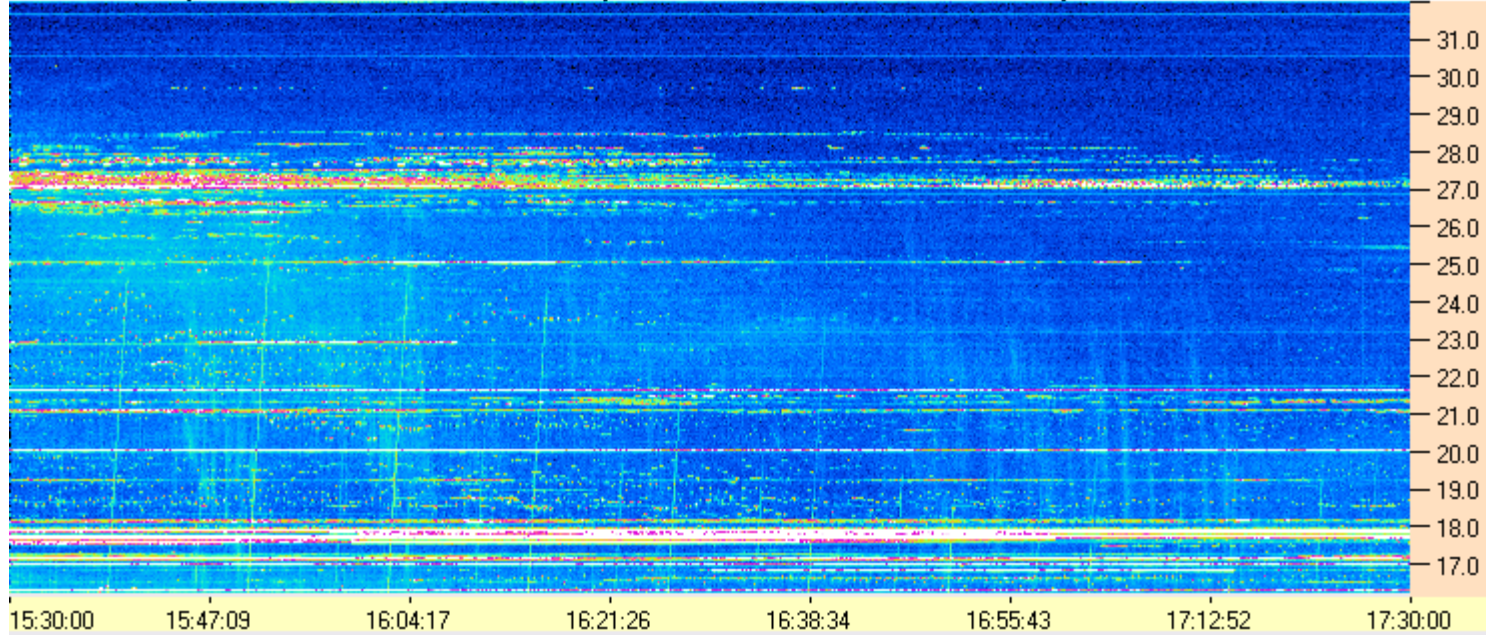
Dave

AJ4CO Observatory 11 Oct 2015, log entry 468





AJ4CO Observatory 11 Oct 2015 - DPS 30 kHz IF on TFD Array in CP Mode - RCP MC +13 dB Correction Array 2014 12 18 B.csv Offset 2075 Gain 5.0



AJ4CO Observatory 11 Oct 2015 - DPS 30 kHz IF on TFD Array in CP Mode - LCP MC +13 dB Correction Array 2014 12 18 B.csv Offset 2075 Gain 5.0

