

Subject: [radiojove-data] 28 Sep 2015 non-Io-C

From: Dave Typinski <davetyp@typnet.net>

Date: 09/30/2015 21:53

To: RadioJove-Data <radiojove-data@lists.nasa.gov>

Here's some non-Io-C from Monday morning, behind the solar bursts. Or maybe it's non-Io-D. It's kind of out in no-man's land on the phase plane.

LCP dominant L bursting 1538-1614 UTC from 16 to 17 MHz, zero freq drift, no modulation lanes visible.

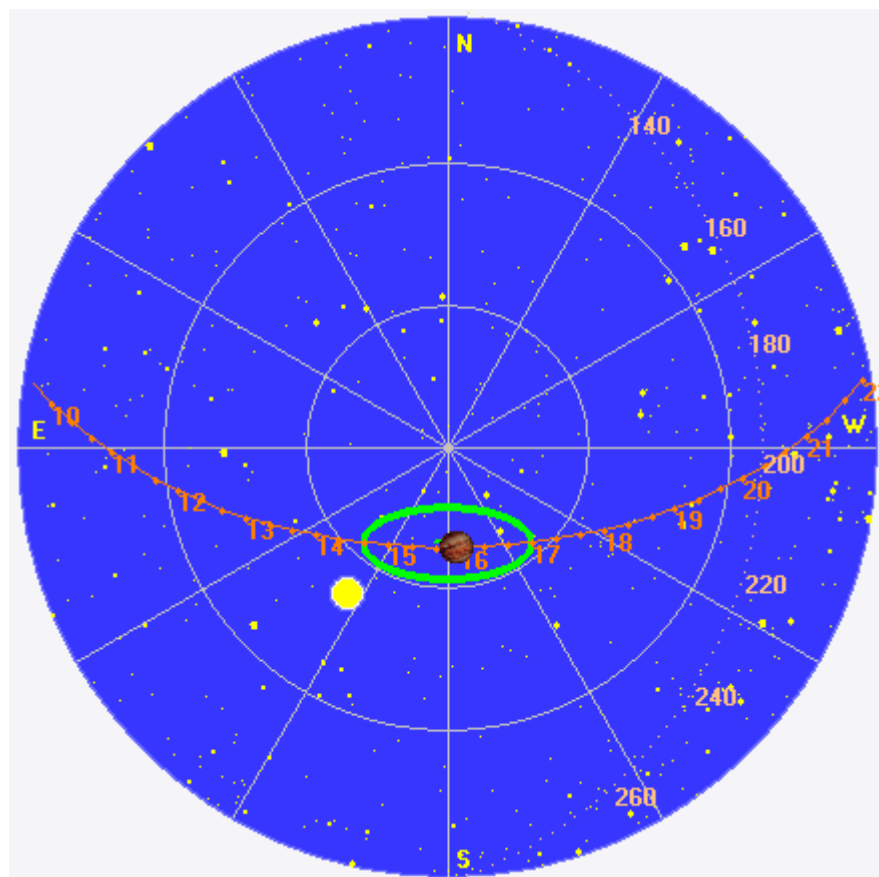
Jupiter was -3° to $+6^\circ$ off axis.

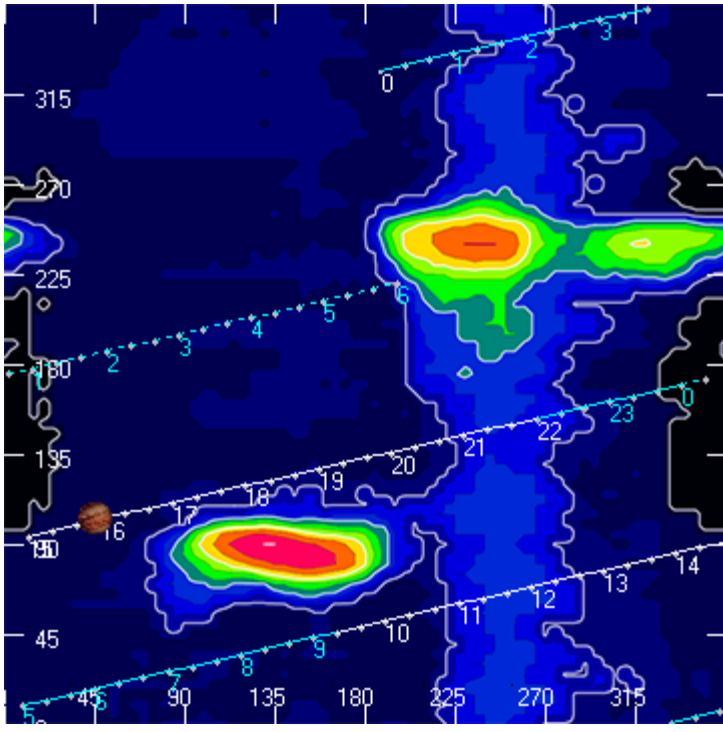
Jupiter was leading the Sun by 25° .

--

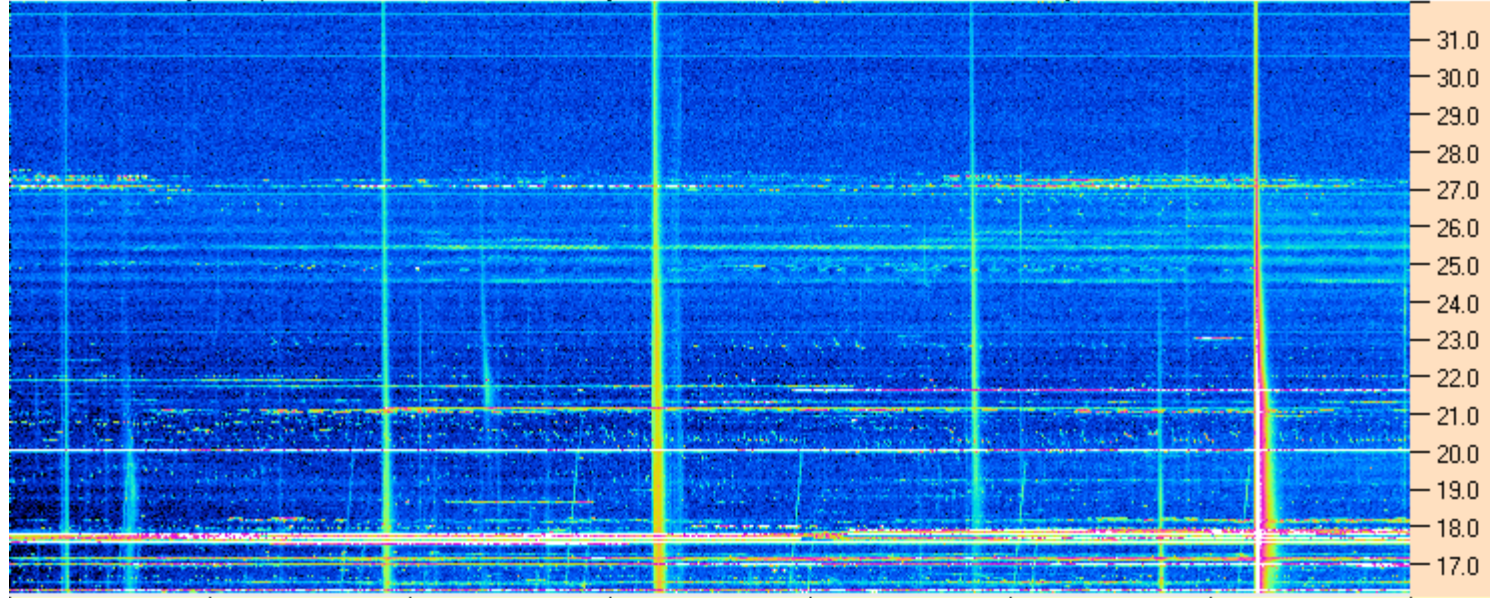
Dave

AJ4CO Observatory 28 Sep 2015, log entry 465





AJ4CO Observatory 28 Sep 2015 - DPS 30 kHz IF on TFD Array in CP Mode - RCP MC +13 dB Correction Array 2014 12 18 B.csv Offset 2050 Gain 5.0



15:15:00 15:25:43 15:36:26 15:47:09 15:57:51 16:08:34 16:19:17 16:30:00

AJ4CO Observatory 28 Sep 2015 - DPS 30 kHz IF on TFD Array in CP Mode - LCP MC +13 dB Correction Array 2014 12 18 B.csv Offset 2050 Gain 5.0

