

Subject: [radiojove-data] 13 Sep 2015 non-Io-A

From: Dave Typinski <davetyp@typnet.net>

Date: 09/16/2015 18:05

To: RadioJove-Data <radiojove-data@lists.nasa.gov>

Here's some weak, brief non-Io-A from Sunday morning. Just a hair too low in freq for the strip chart.

RCP dominant L bursting 1536-1556 UTC from 18 to 20 MHz, negative frequency drift, no modulation lanes visible.

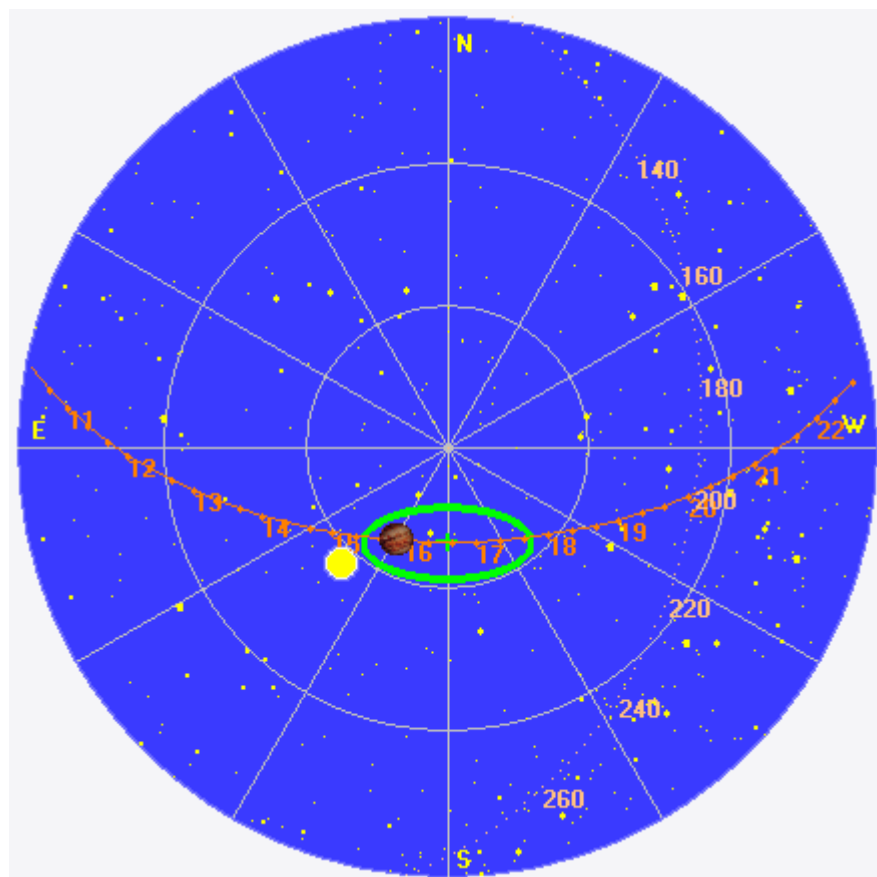
Jupiter was -15° to -10° off axis.

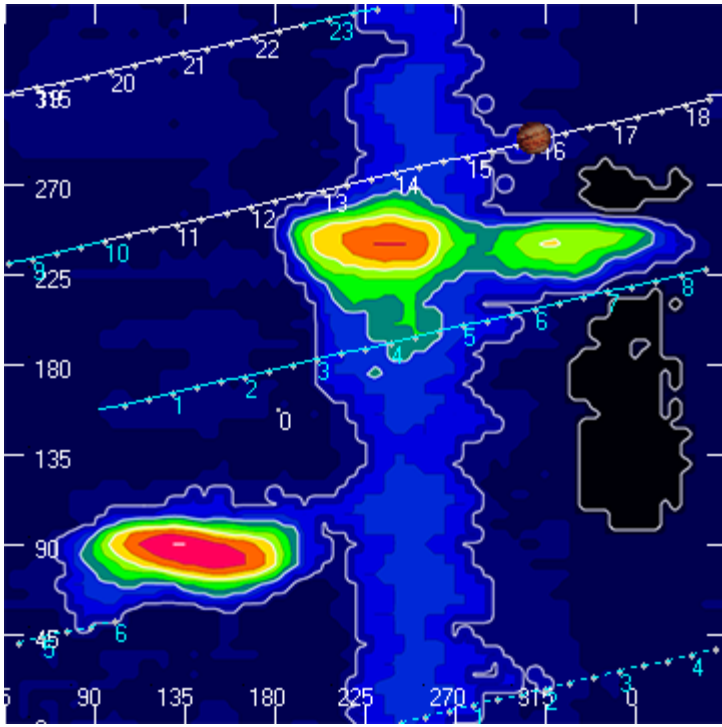
Jupiter was leading the Sun by 13° .

--

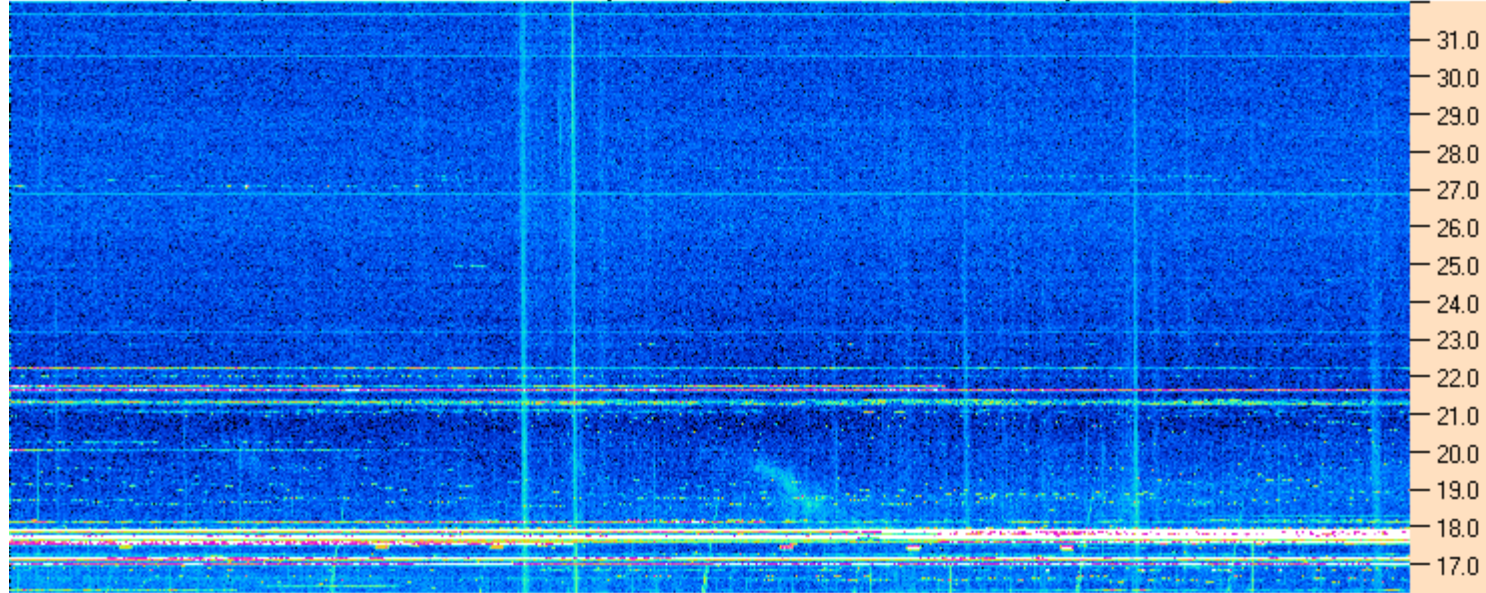
Dave

AJ4CO Observatory 13 Sep 2015, log entry 457



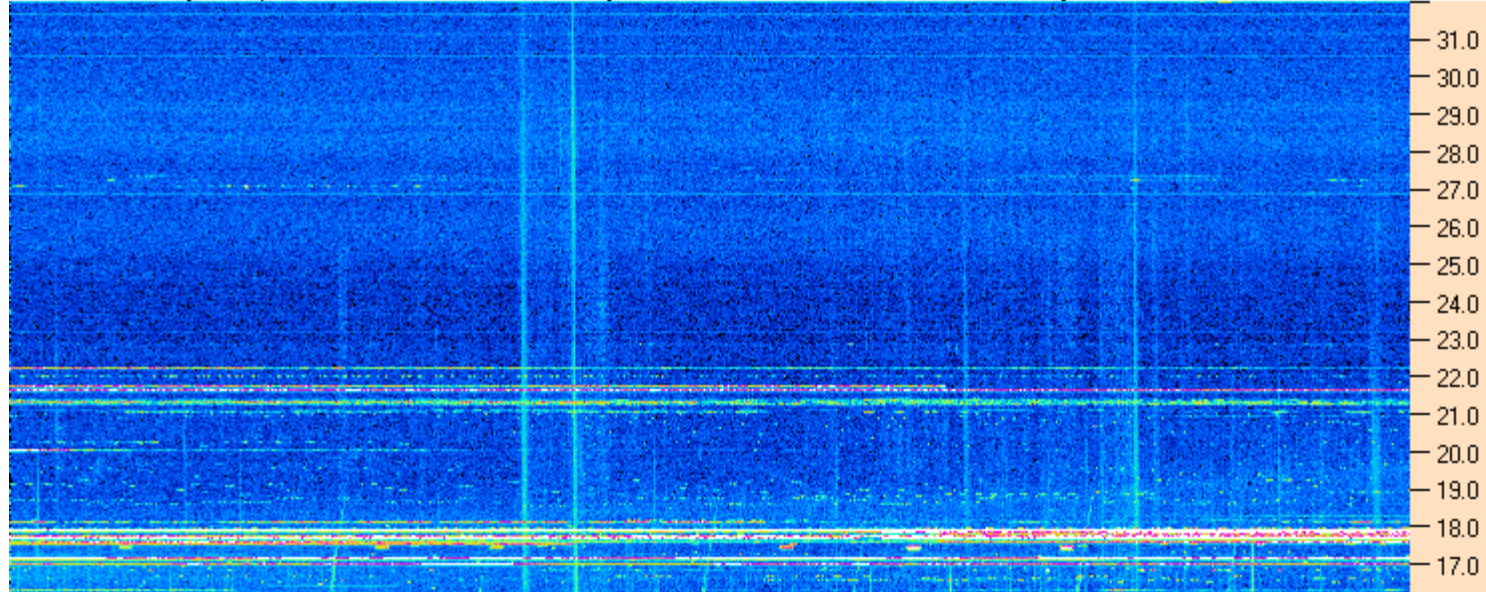


AJ4CO Observatory 13 Sep 2015 - DPS 30 kHz IF on TFD Array in CP Mode - RCP MC +13 dB Correction Array 2014 12 18 B.csv Offset 2050 Gain 5.0



15:30:00 15:36:26 15:42:51 15:49:17 15:55:43 16:02:09 16:08:34 16:15:00

AJ4CO Observatory 13 Sep 2015 - DPS 30 kHz IF on TFD Array in CP Mode - LCP MC +13 dB Correction Array 2014 12 18 B.csv Offset 2050 Gain 5.0



09/13/2015 AJCO Observatory

