

**Subject:** [radiojove-data] 10 Sep 2015 non-Io-A

**From:** Dave Typinski <davetyp@typnet.net>

**Date:** 09/11/2015 21:50

**To:** RadioJove-Data <radiojove-data@lists.nasa.gov>

Here's some weak non-Io-A from Thursday morning.

RCP dominant L bursting 1634-1656 UTC from 18 to 24 MHz, no frequency drift, no modulation lanes visible.

Jupiter was  $-3^\circ$  to  $+2^\circ$  off axis.

Jupiter was leading the Sun by  $11^\circ$ .

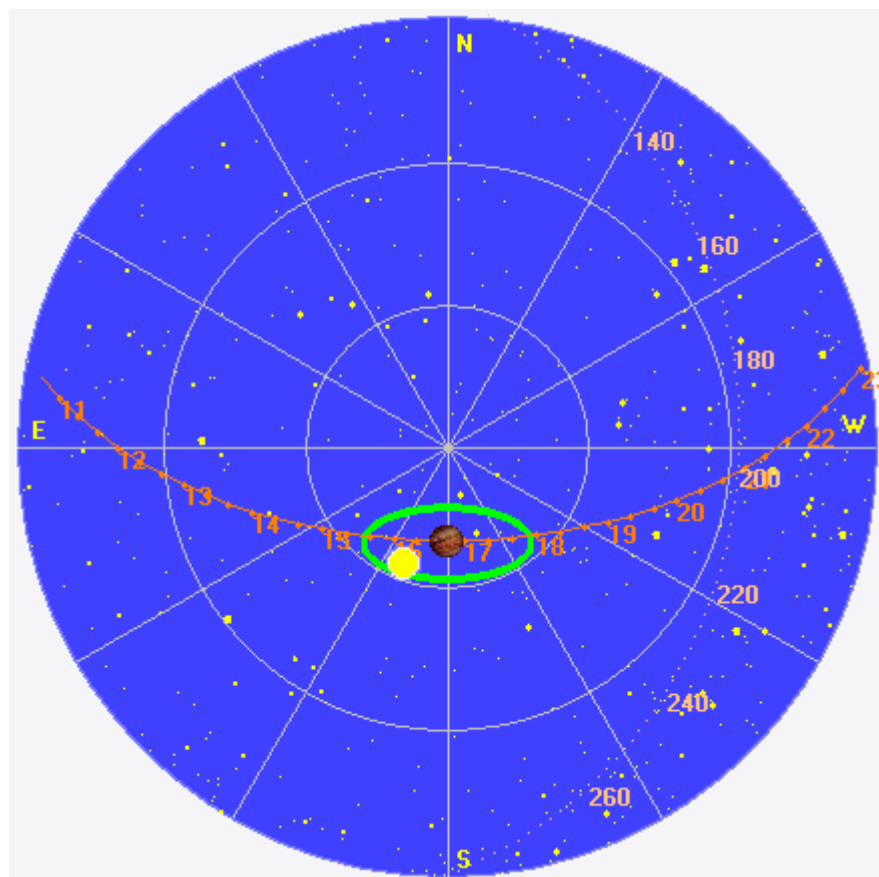
--

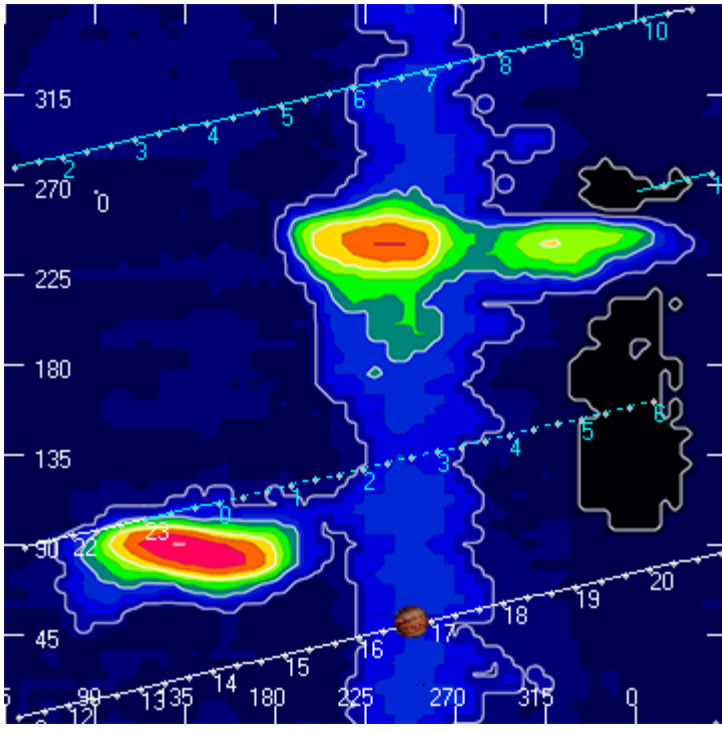
Dave

---

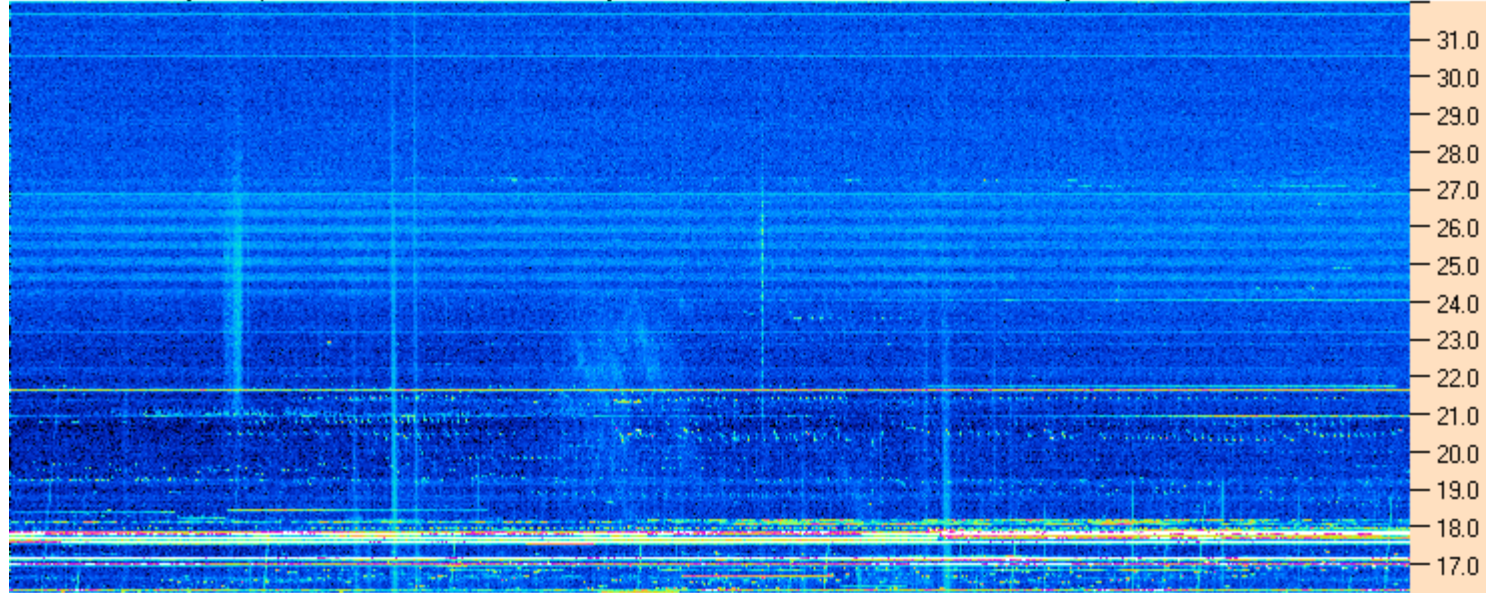
**AJ4CO Observatory 10 Sep 2015, log entry 451**

---





AJ4CO Observatory 10 Sep 2015 - DPS 30 kHz IF on TFD Array in CP Mode - RCP MC +13 dB Correction Array 2014 12 18 B.csv Offset 2050 Gain 5.0



16:00:00 16:12:51 16:25:43 16:38:34 16:51:26 17:04:17 17:17:09 17:30:00

AJ4CO Observatory 10 Sep 2015 - DPS 30 kHz IF on TFD Array in CP Mode - LCP MC +13 dB Correction Array 2014 12 18 B.csv Offset 2050 Gain 5.0

