

Subject: [radiojove-data] 09 Sep 2015 two galactic humps

From: Dave Typinski <davetyp@typnet.net>

Date: 09/10/2015 22:01

To: RadioJove-Data <radiojove-data@lists.nasa.gov>

There was very little HF propagation in the upper HF band on Wednesday, possibly due to a relatively high K index (lots of geomagnetic activity).

This left a window open to see the small hump from the outer galactic plane, normally hidden this time of year by the daily increase in band noise.

Interesting that the hump in the spectrogram follows the timing of the inner galactic plane, but the hump in the strip chart comes a little earlier. Don't know what caused that.

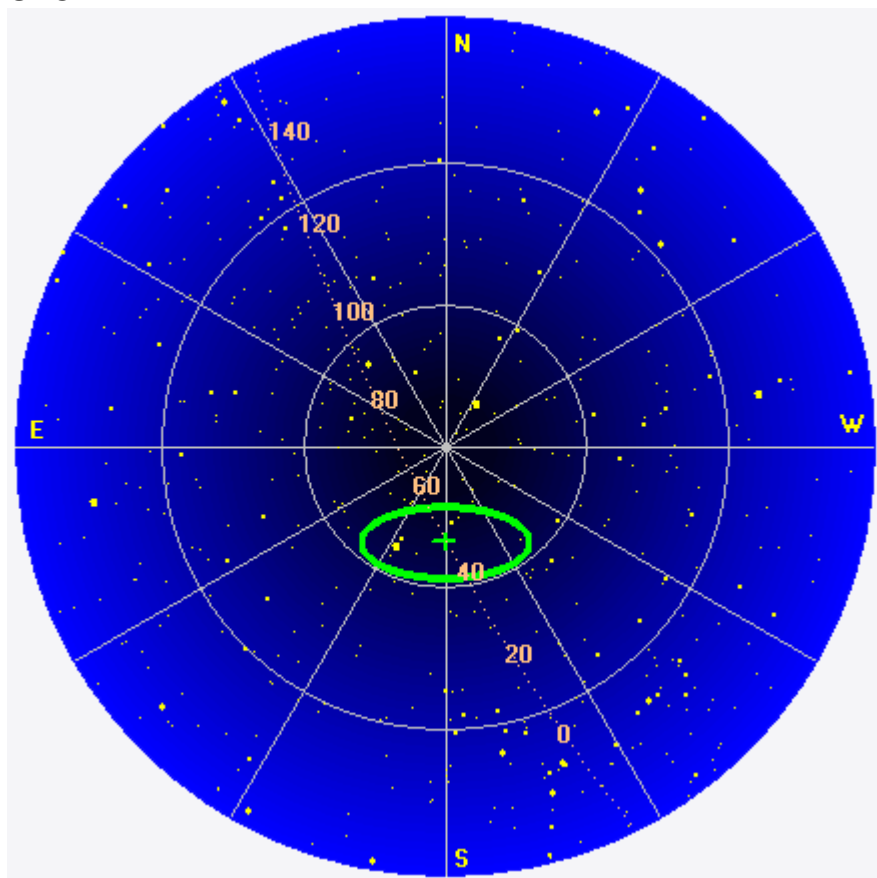
--

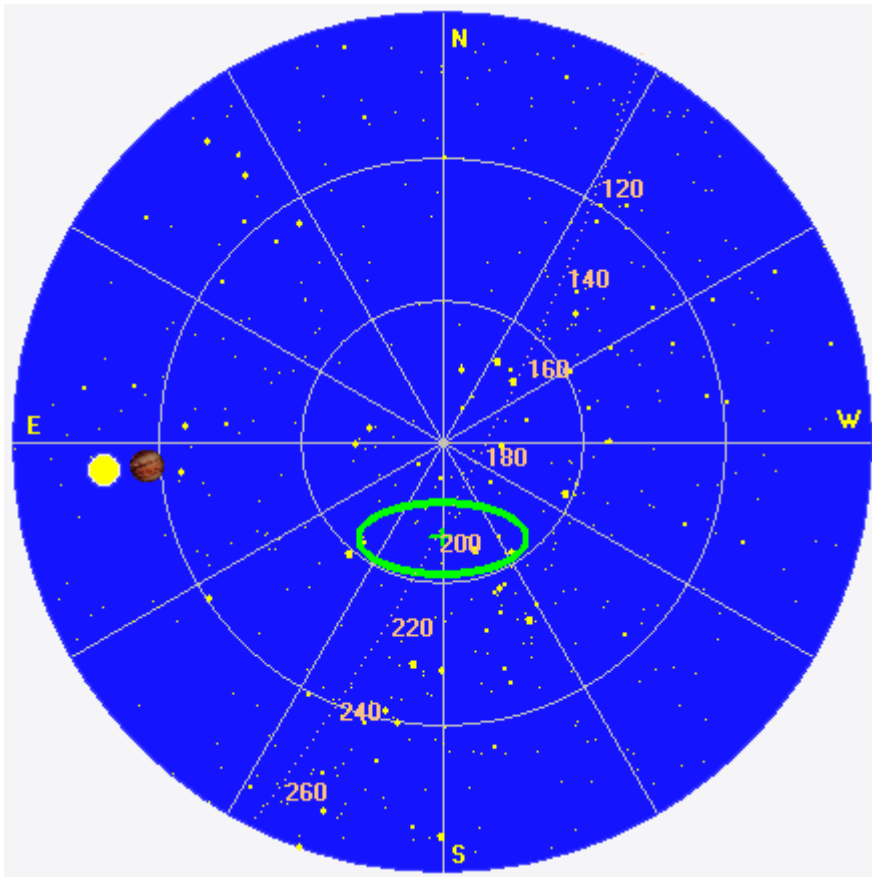
Dave

AJ4CO Observatory 09 Sep 2015

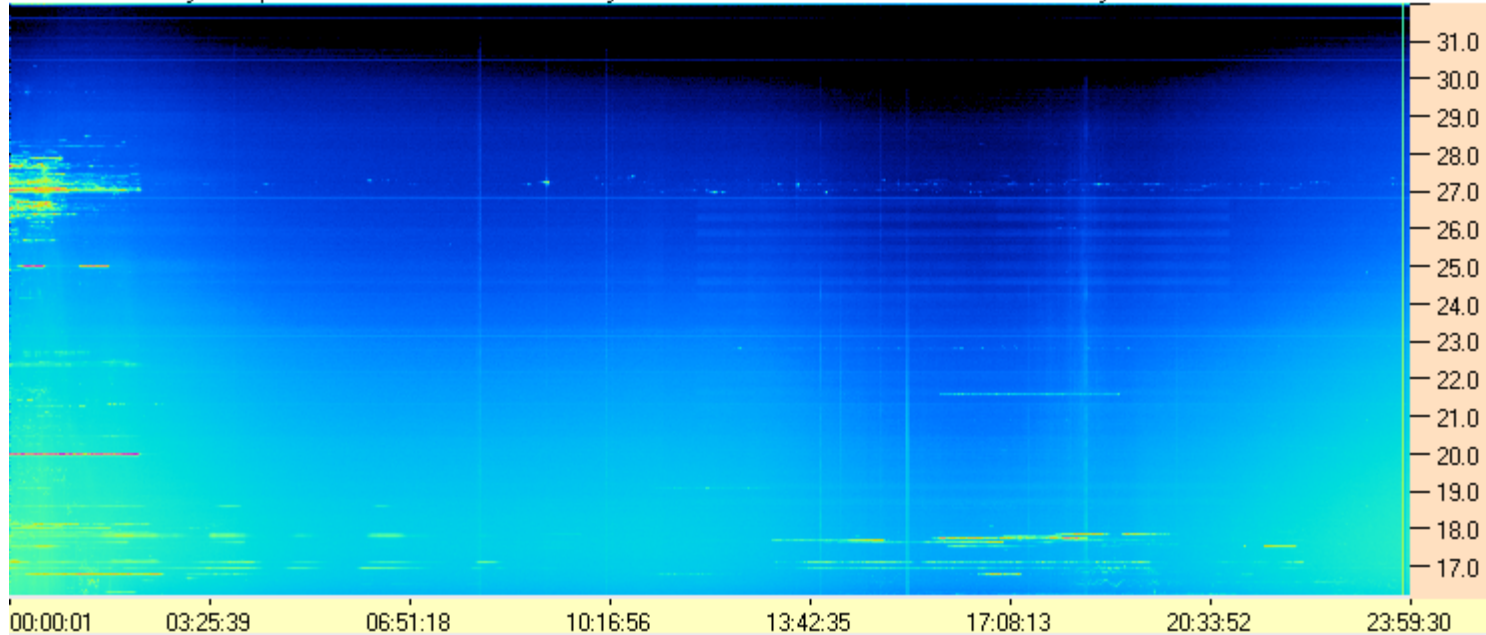
Inner galactic plane crosses at 0130 UTC UTC.

Outer galactic plane crosses at 1240 UTC.

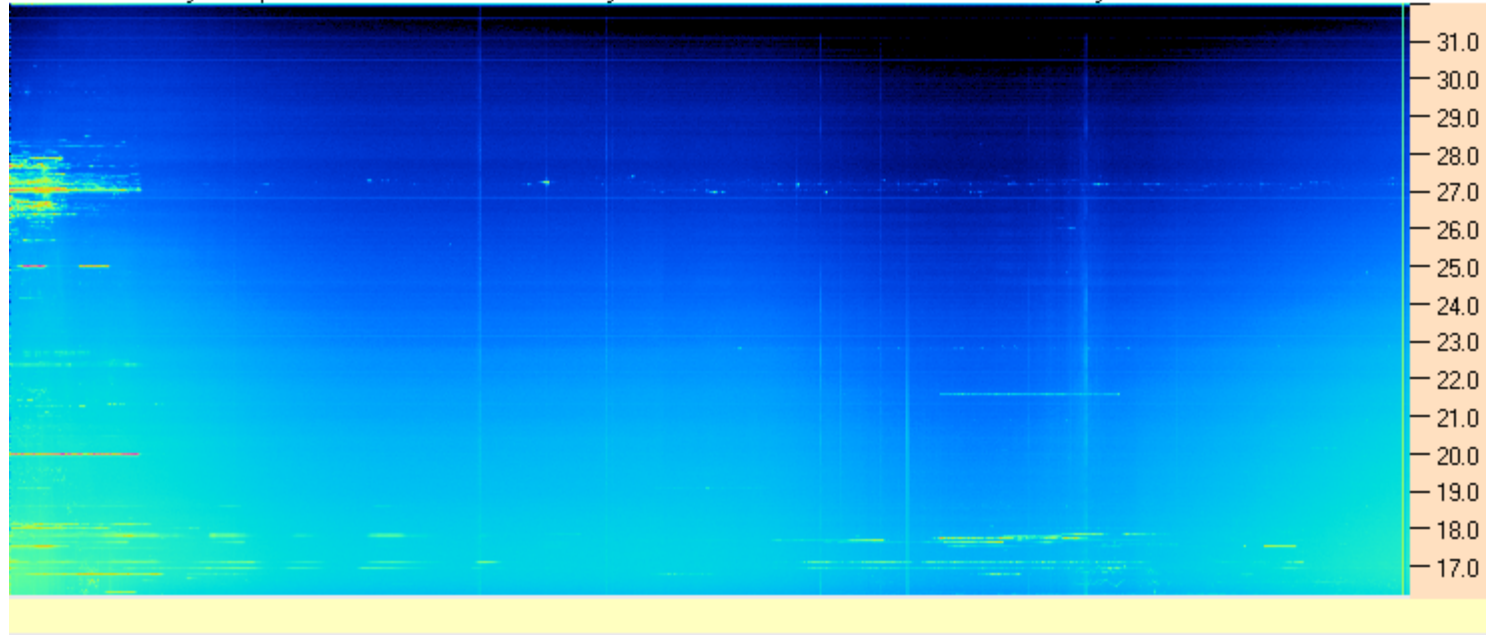


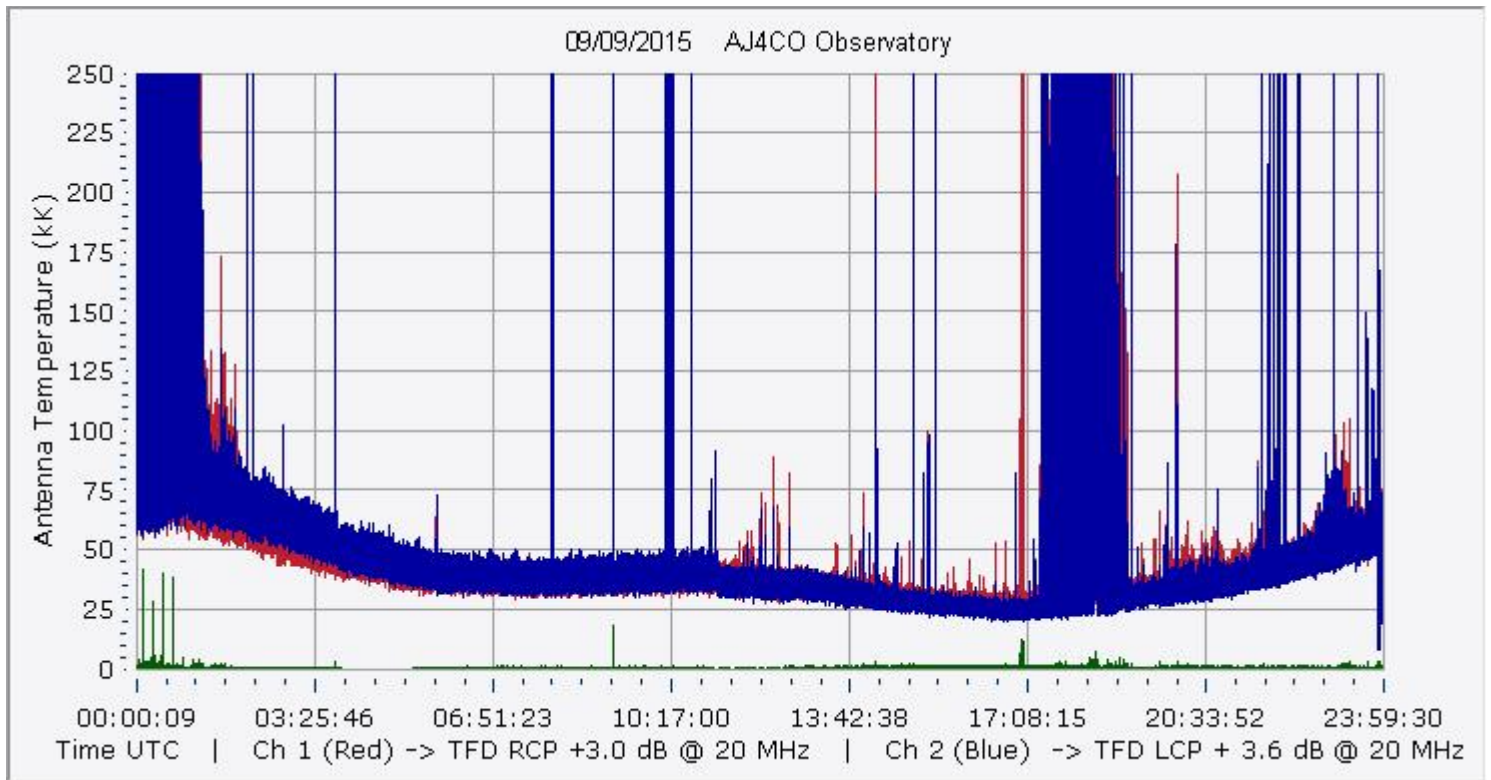


AJ4CO Observatory 09 Sep 2015 - DPS 30 kHz IF on TFD Array in CP Mode - RCP MC +13 dB No Correction Array Offset 1975 Gain 1.95

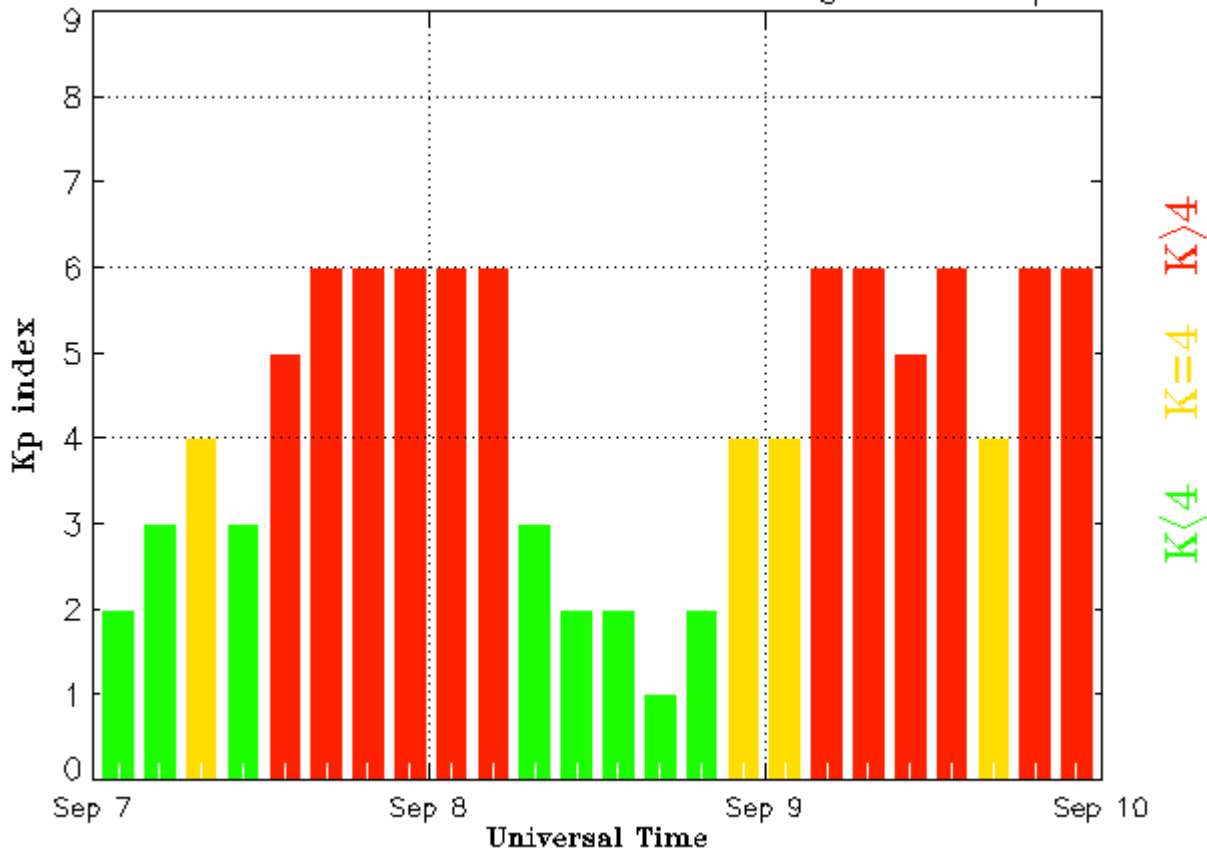


AJ4CO Observatory 09 Sep 2015 - DPS 30 kHz IF on TFD Array in CP Mode - LCP MC +13 dB No Correction Array Offset 1975 Gain 1.95





Estimated Planetary K index (3 hour data) Begin: 2015 Sep 07 0000 UTC



Updated 2015 Sep 10 00:31:05 UTC

NOAA/SWPC Boulder, CO USA