

**Subject:** [radiojove-data] 04 Sep 2015 Io-C

**From:** Dave Typinski <davetyp@typnet.net>

**Date:** 09/05/2015 01:19

**To:** RadioJove-Data <radiojove-data@lists.nasa.gov>

Here's some Io-C from Friday afternoon.

LCP dominant L bursting 1411-1508 UTC from 16 to 21 MHz, vertex late arcs, no modulation lanes visible.

Jupiter was  $-43^\circ$  to  $-29^\circ$  off axis.

Jupiter was leading the Sun by  $7^\circ$ .

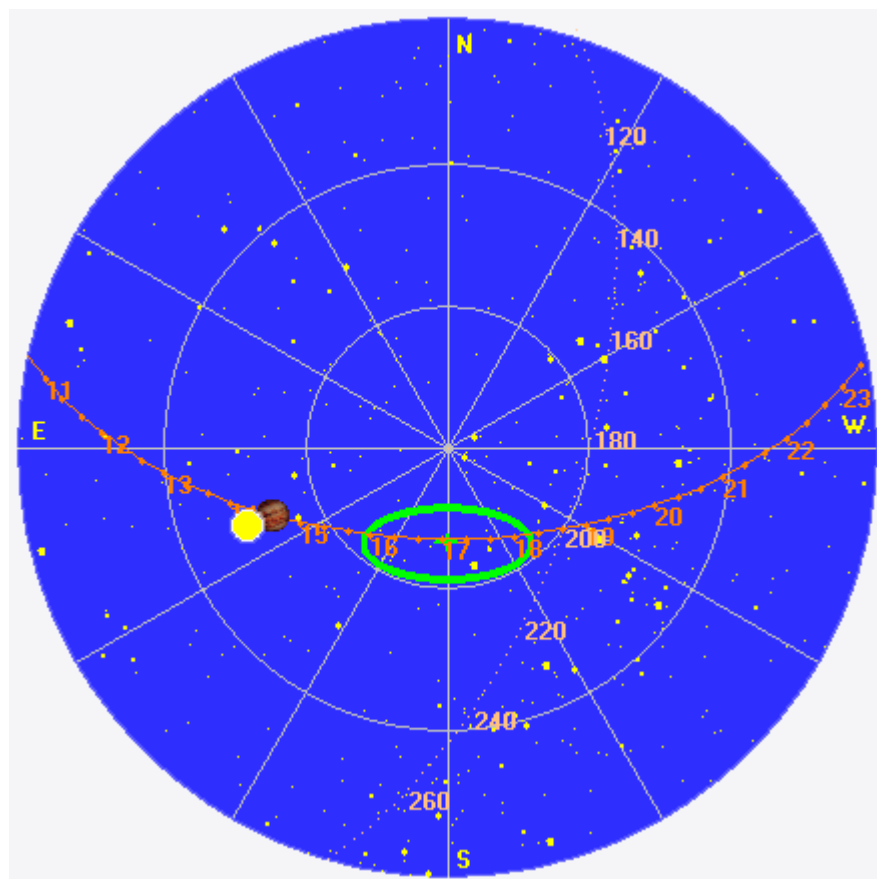
--

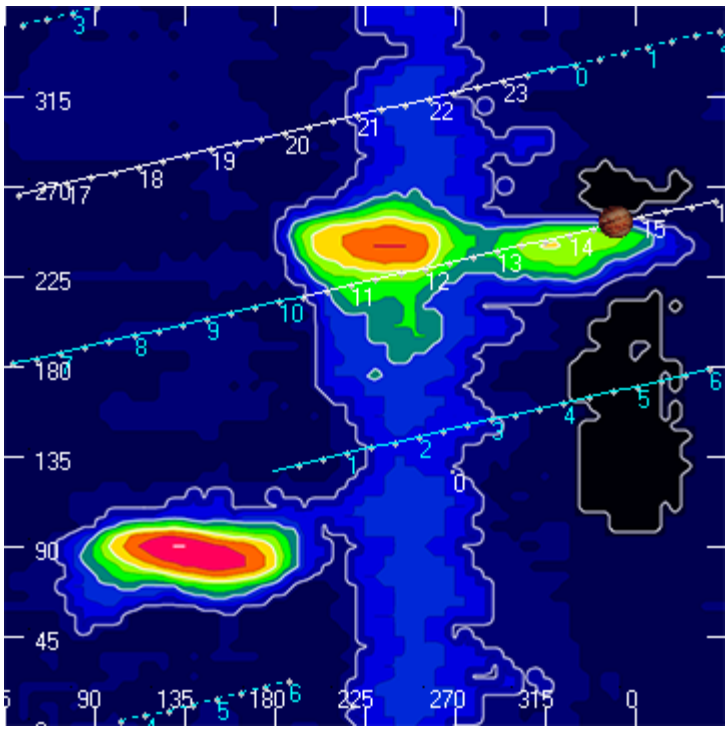
Dave

---

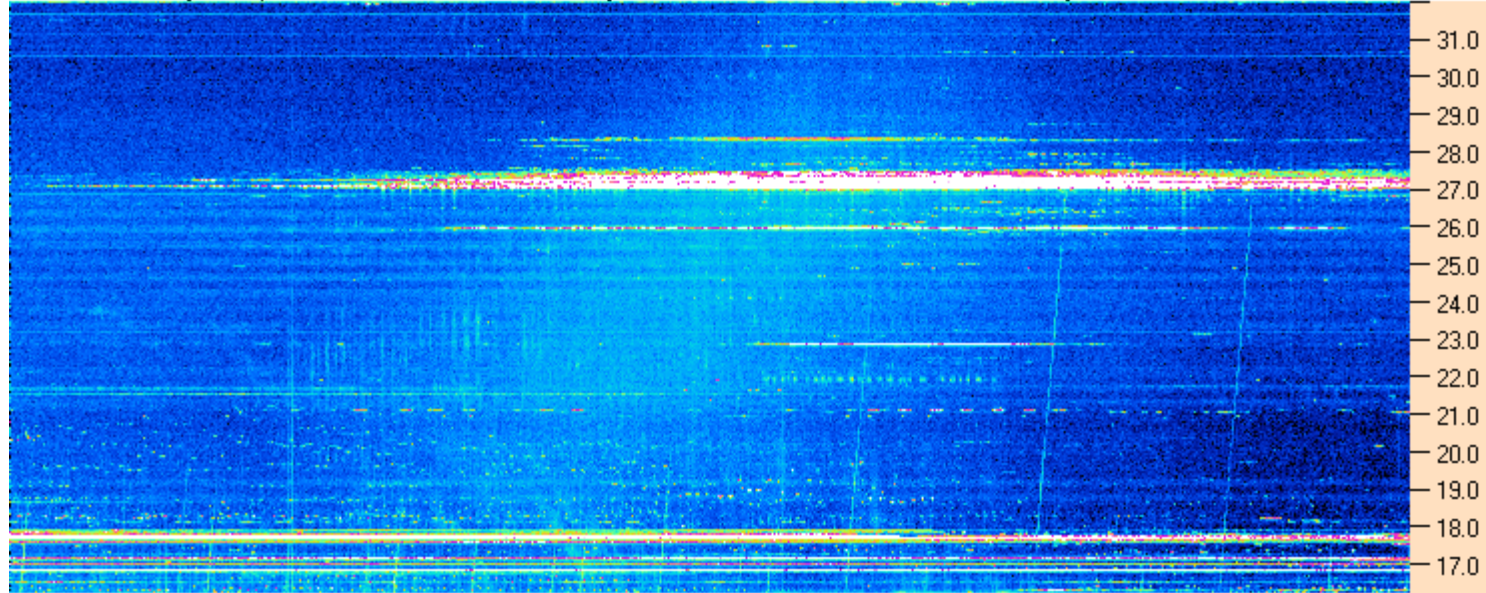
**AJ4CO Observatory 04 Sep 2015, log entry 447**

---



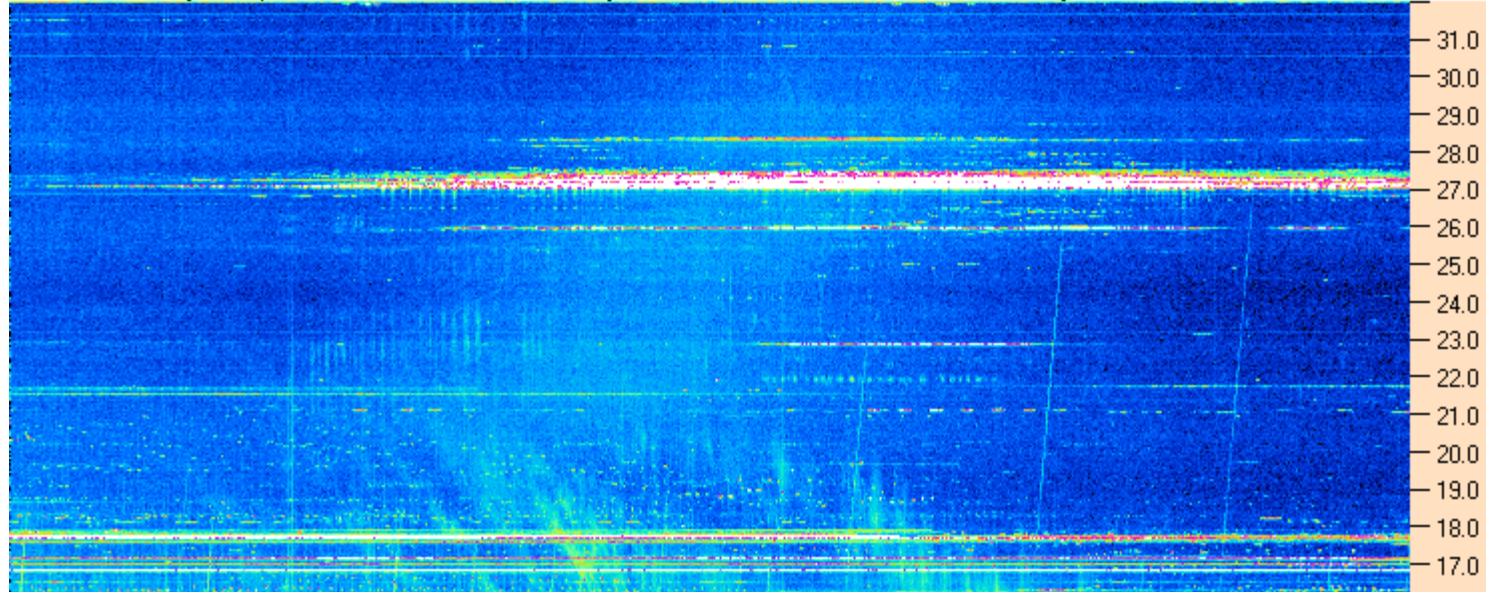


AJ4CO Observatory 04 Sep 2015 - DPS 30 kHz IF on TFD Array in CP Mode - RCP MC +13 dB Correction Array 2014 12 18 B.csv Offset 2075 Gain 5.0



14:00:00 14:12:51 14:25:43 14:38:34 14:51:26 15:04:17 15:17:09 15:30:00

AJ4CO Observatory 04 Sep 2015 - DPS 30 kHz IF on TFD Array in CP Mode - LCP MC +13 dB Correction Array 2014 12 18 B.csv Offset 2075 Gain 5.0



09/04/2015 AJ4CO Observatory

