

Subject: [radiojove-data] 31 Aug 2015 non-Io-A

From: Dave Typinski <davetyp@typnet.net>

Date: 08/31/2015 21:50

To: RadioJove-Data <radiojove-data@lists.nasa.gov>

Celebrating the first Jovian observation after conjunction, here's some non-Io-A from Monday afternoon.

RCP dominant L bursting 1709-1801 UTC from 19 to 29 MHz, zero frequency drift, no modulation lanes visible.

Nothing too visible on the 20 MHz strip chart.

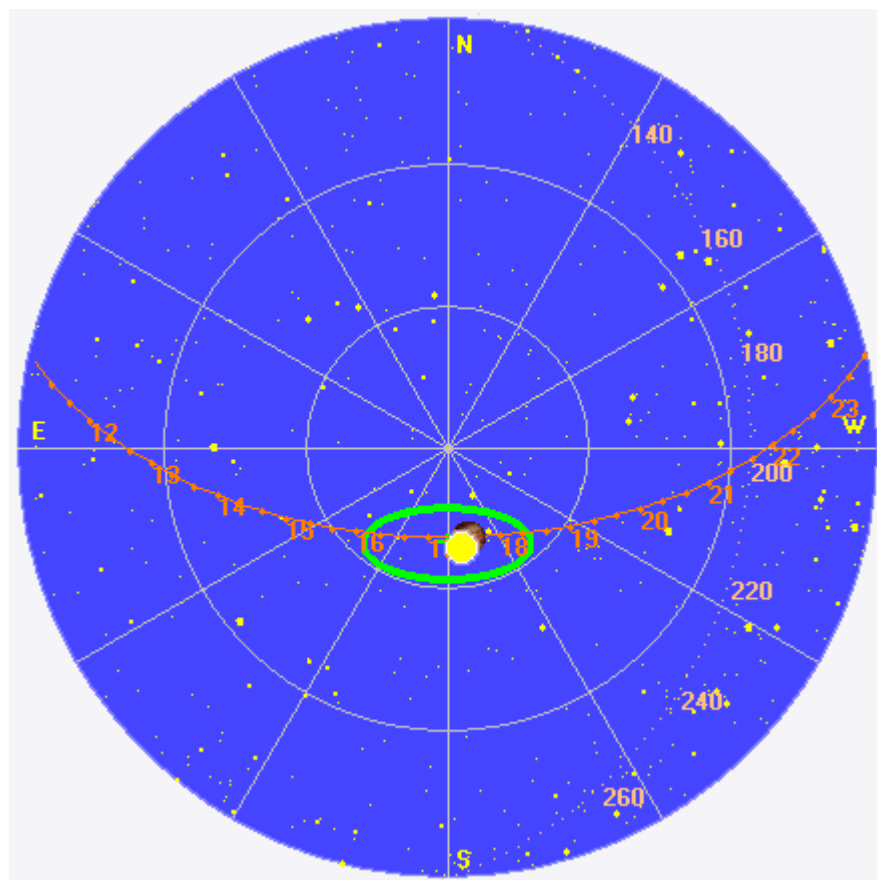
Jupiter was -3° to $+10^\circ$ off axis.

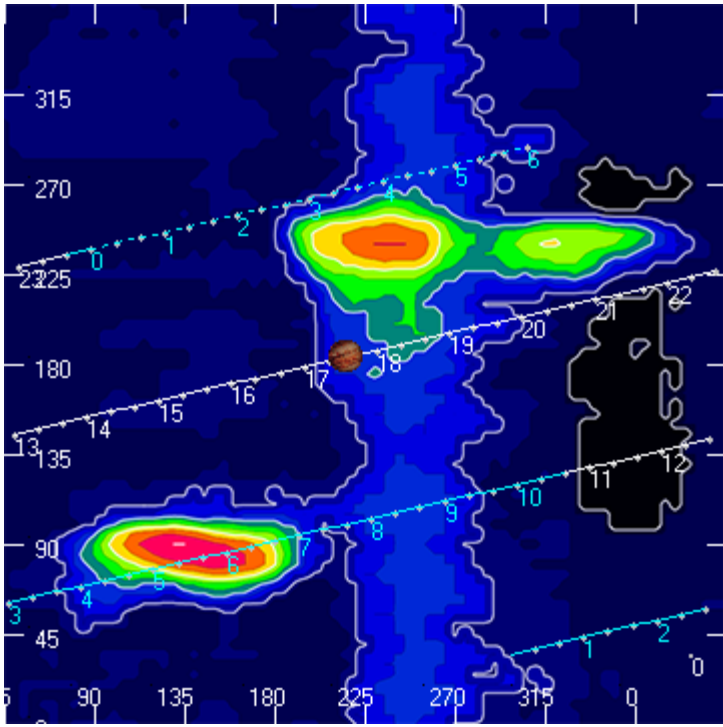
Jupiter was leading the Sun by 4° .

--

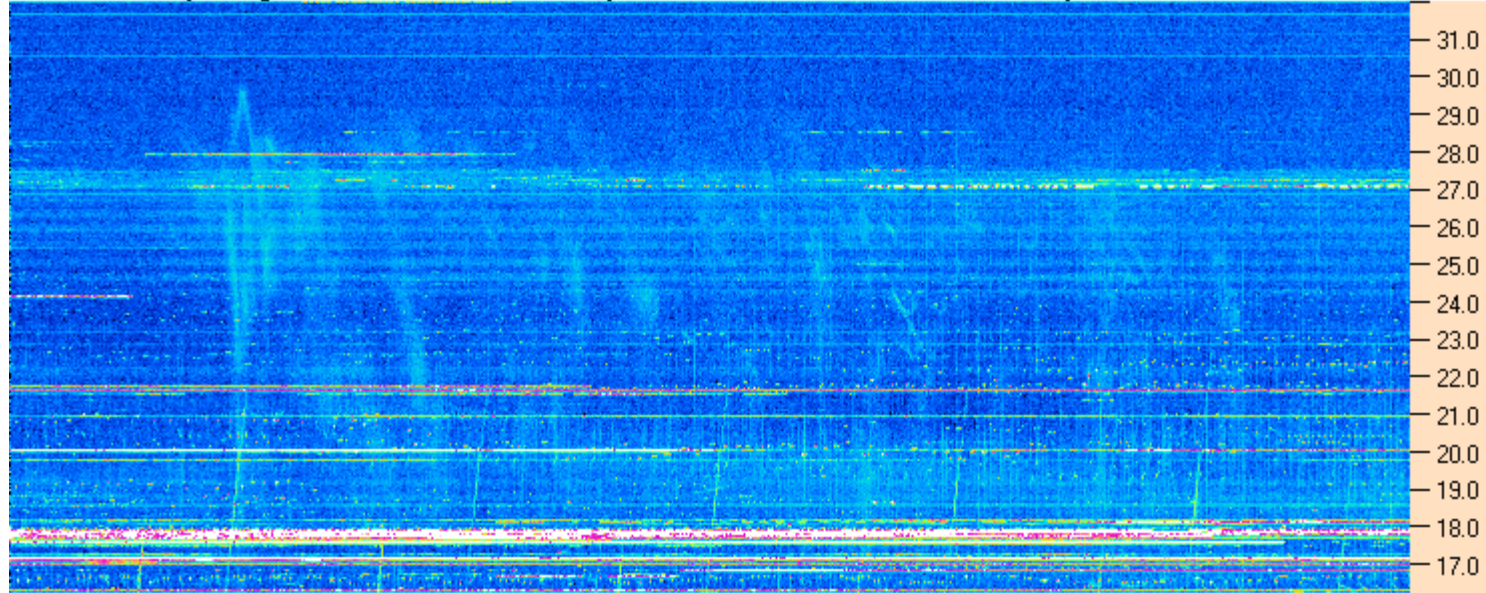
Dave

AJ4CO Observatory 31 Aug 2015, log entry 445



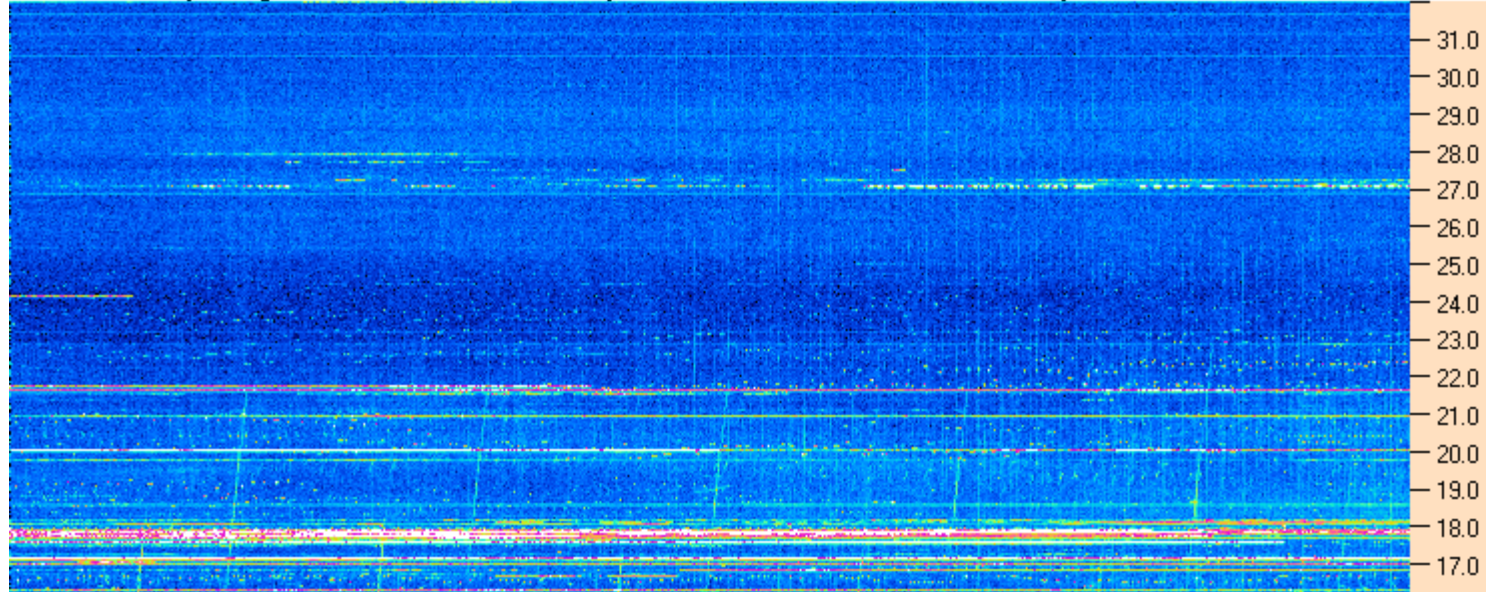


AJ4CO Observatory 31 Aug 2015 - DPS 30 kHz IF on TFD Array in CP Mode - RCP MC +13 dB Correction Array 2014 12 18 B.csv Offset 2050 Gain 5.0



17:00:00 17:10:00 17:20:00 17:30:00 17:40:00 17:50:00 18:00:00 18:10:00

AJ4CO Observatory 31 Aug 2015 - DPS 30 kHz IF on TFD Array in CP Mode - LCP MC +13 dB Correction Array 2014 12 18 B.csv Offset 2050 Gain 5.0



08/31/2015 AJ4CO Observatory

