

Subject: [radiojove-data] 20 Aug 2015 non-Io-C

From: Dave Typinski <davetyp@typnet.net>

Date: 08/21/2015 18:43

To: RadioJove-Data <radiojove-data@lists.nasa.gov>

Here's some non-Io-C from Thursday afternoon, behind the regional lightning.

LCP dominant L bursting (narrow enough to almost be an N event) 1742-1808 UTC from 16 to 18 MHz, positive frequency drift, no modulation lanes visible.

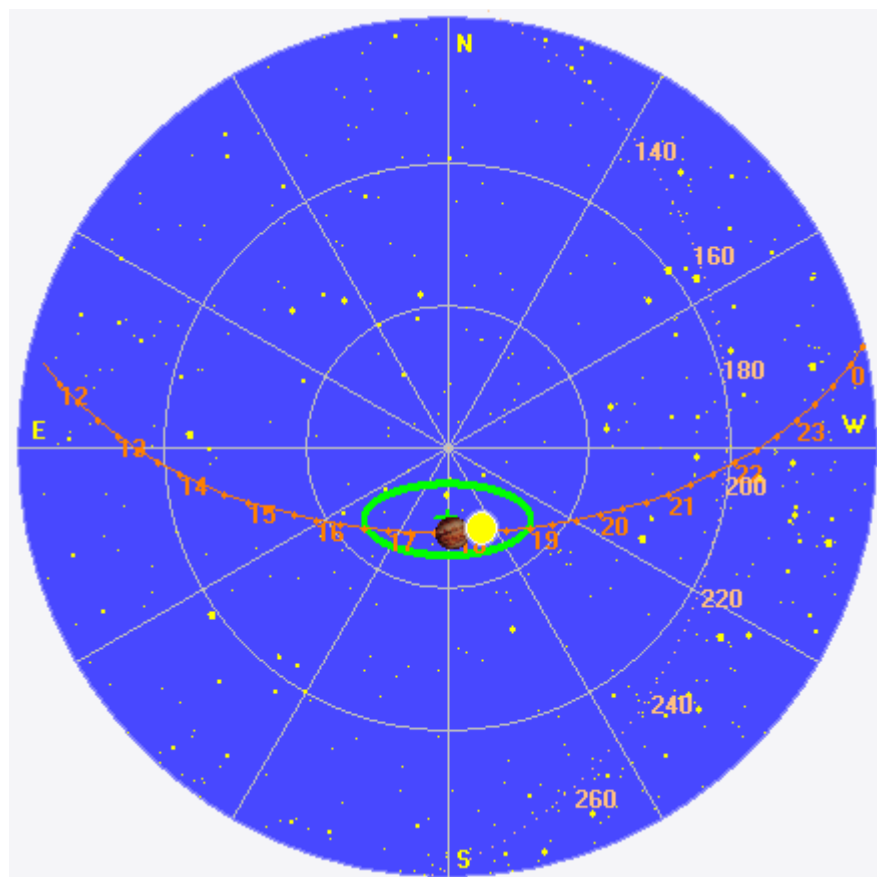
Jupiter was -4° to $+5^\circ$ off axis.

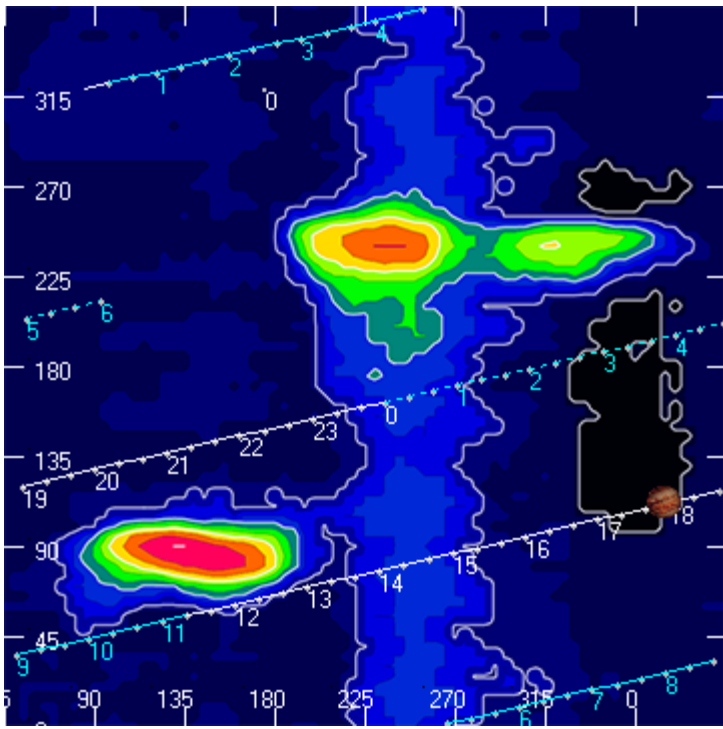
Jupiter was trailing the Sun by 5° .

--

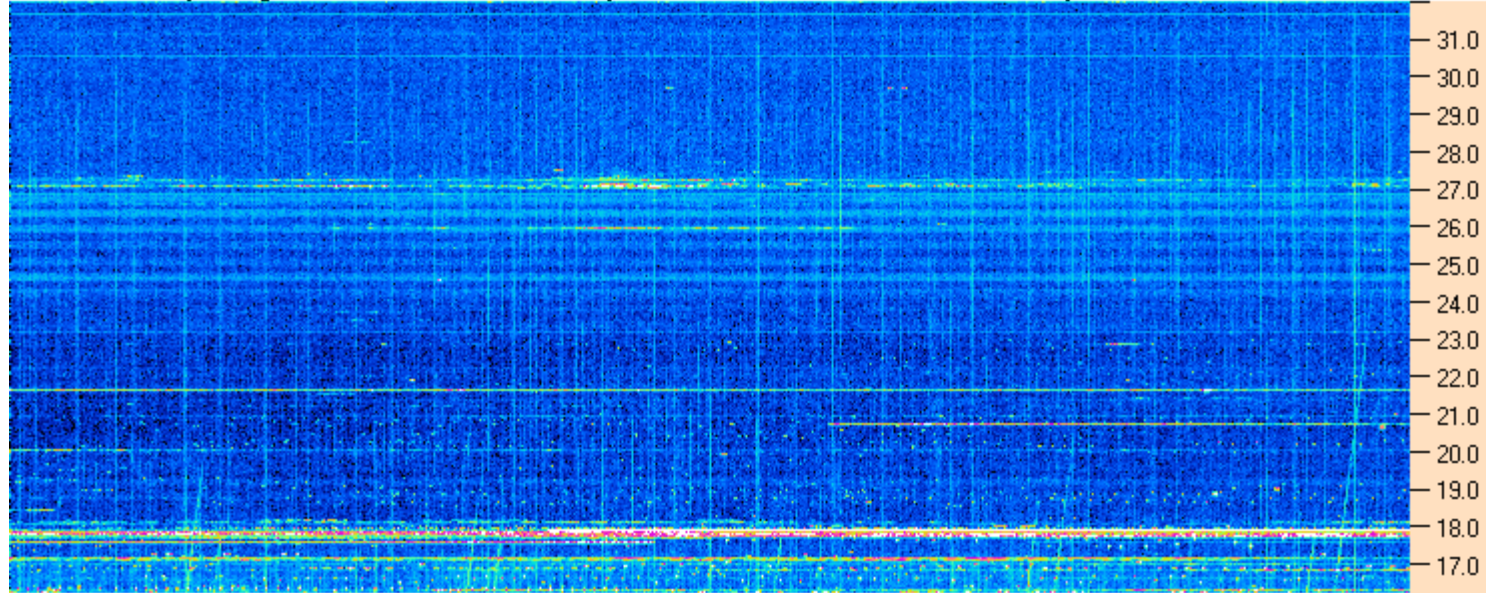
Dave

AJ4CO Observatory 20 Aug 2015, log entry 444





AJ4CO Observatory 20 Aug 2015 - DPS 30 kHz IF on TFD Array in CP Mode - RCP MC +13 dB Correction Array 2014 12 18 B.csv Offset 2050 Gain 5.0



AJ4CO Observatory 20 Aug 2015 - DPS 30 kHz IF on TFD Array in CP Mode - LCP MC +13 dB Correction Array 2014 12 18 B.csv Offset 2050 Gain 5.0

