

Subject: [radiojove-data] 23 Jul 2015 Io-A

From: Dave Typinski <davetyp@typnet.net>

Date: 07/27/2015 00:06

To: RadioJove-Data <radiojove-data@lists.nasa.gov>

Here's some Io-A from behind the line noise from Thursday afternoon.

RCP dominant L bursting 2006-2040 UTC from 21 to 27 MHz, zero drift envelope. No modulation lanes visible.

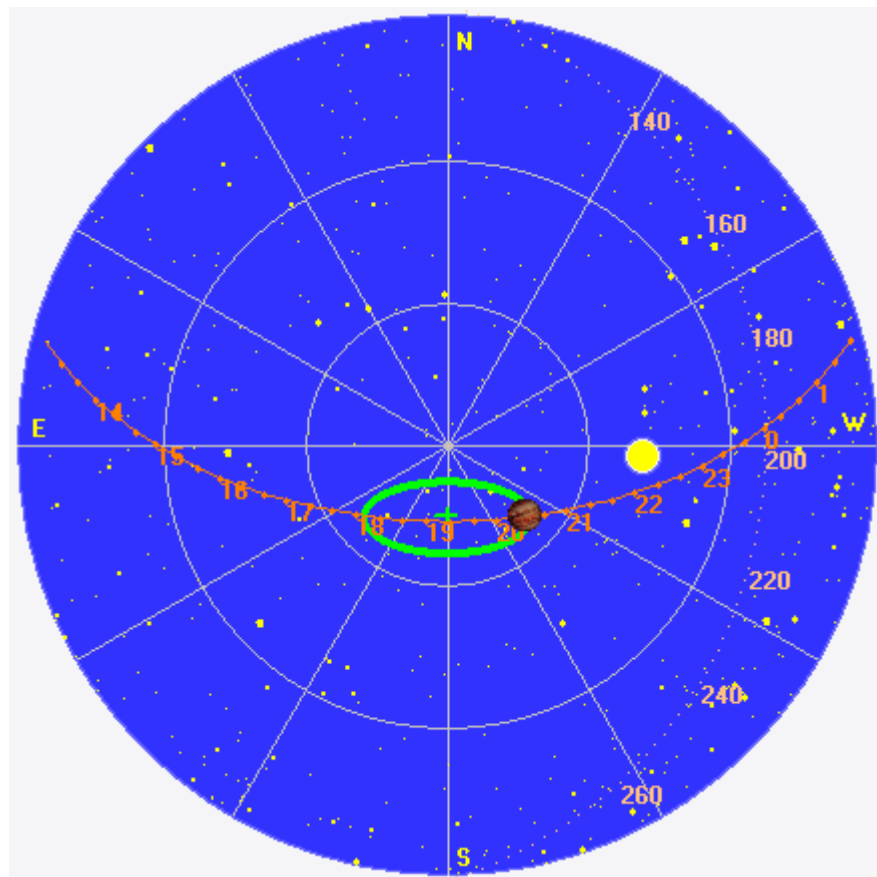
Jupiter was +11° to +19° off axis.

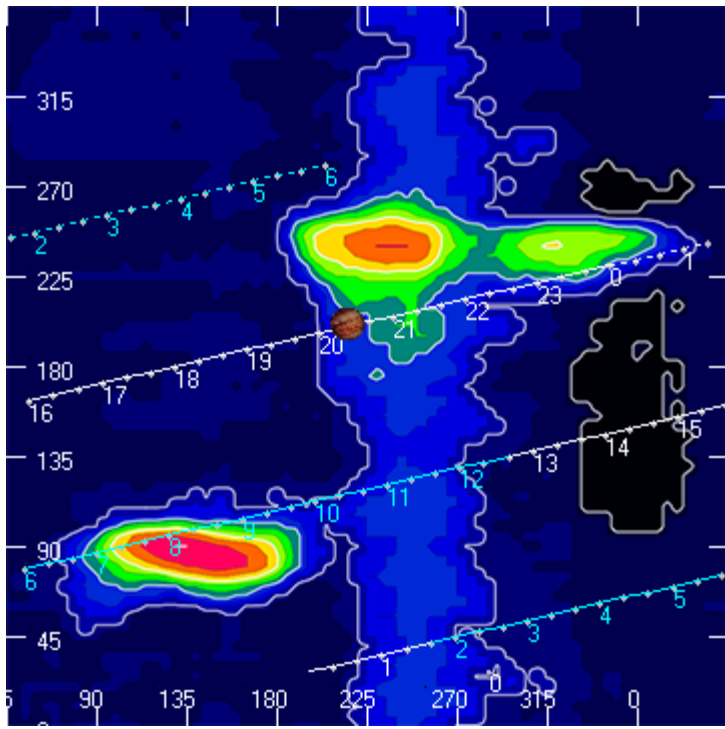
Jupiter was trailing the Sun by 25°.

--

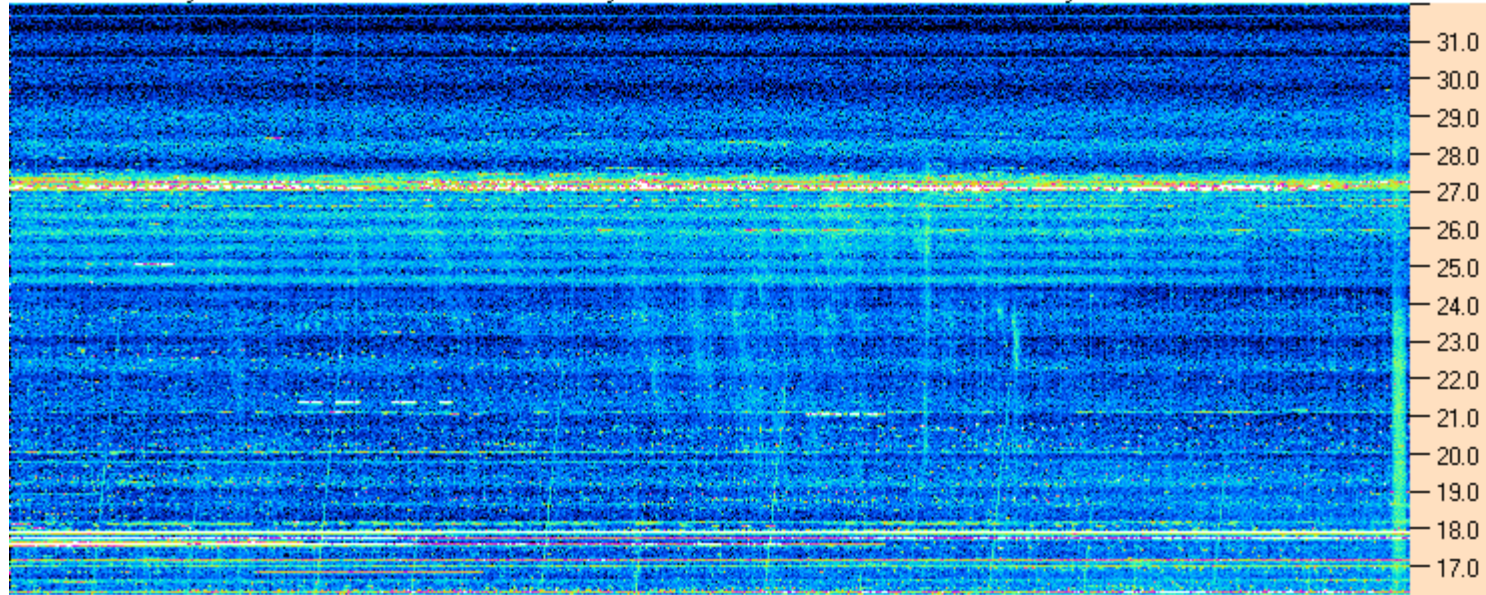
Dave

AJ4CO Observatory 23 Jul 2015, log entry 435





AJ4CO Observatory - 23 Jul 2015 - DPS 30 kHz IF on TFD Array in CP Mode - RCP MC +13 dB Correction Array 2014 12 18 B.csv Offset 2130 Gain 5.0



19:45:00 19:55:43 20:06:26 20:17:09 20:27:52 20:38:34 20:49:17 21:00:00

AJ4CO Observatory - 23 Jul 2015 - DPS 30 kHz IF on TFD Array in CP Mode - LCP MC +13 dB Correction Array 2014 12 18 B.csv Offset 2130 Gain 5.0

