

Subject: [radiojove-data] 16 Jul 2015 Io-A

From: Dave Typinski <davetyp@typnet.net>

Date: 07/17/2015 16:38

To: RadioJove-Data <radiojove-data@lists.nasa.gov>

Here's some Io-A from behind the line noise from Thursday afternoon.

RCP dominant L bursting 1917-2007 UTC from 21 to 29 MHz, upward drifting envelope. No modulation lanes visible.

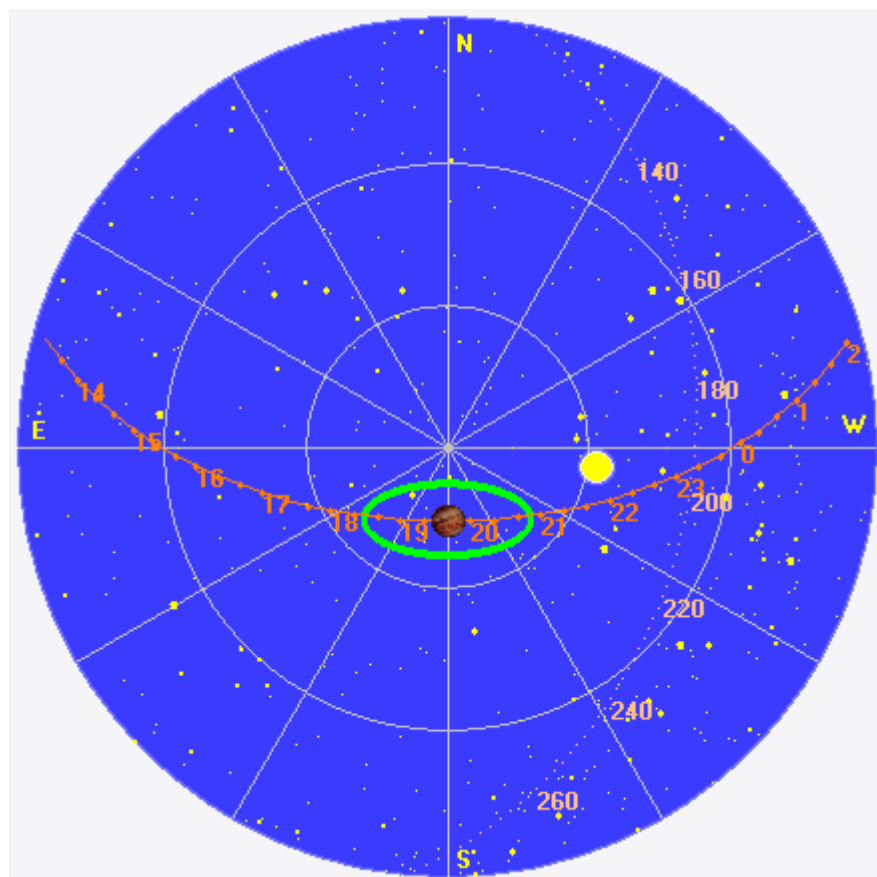
Jupiter was -6° to $+6^\circ$ off axis.

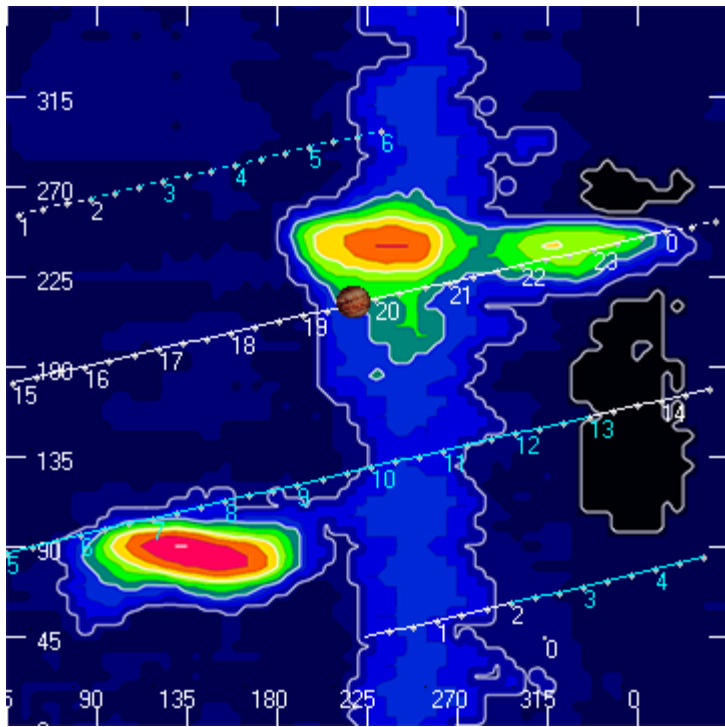
Jupiter was trailing the Sun by 31° .

--

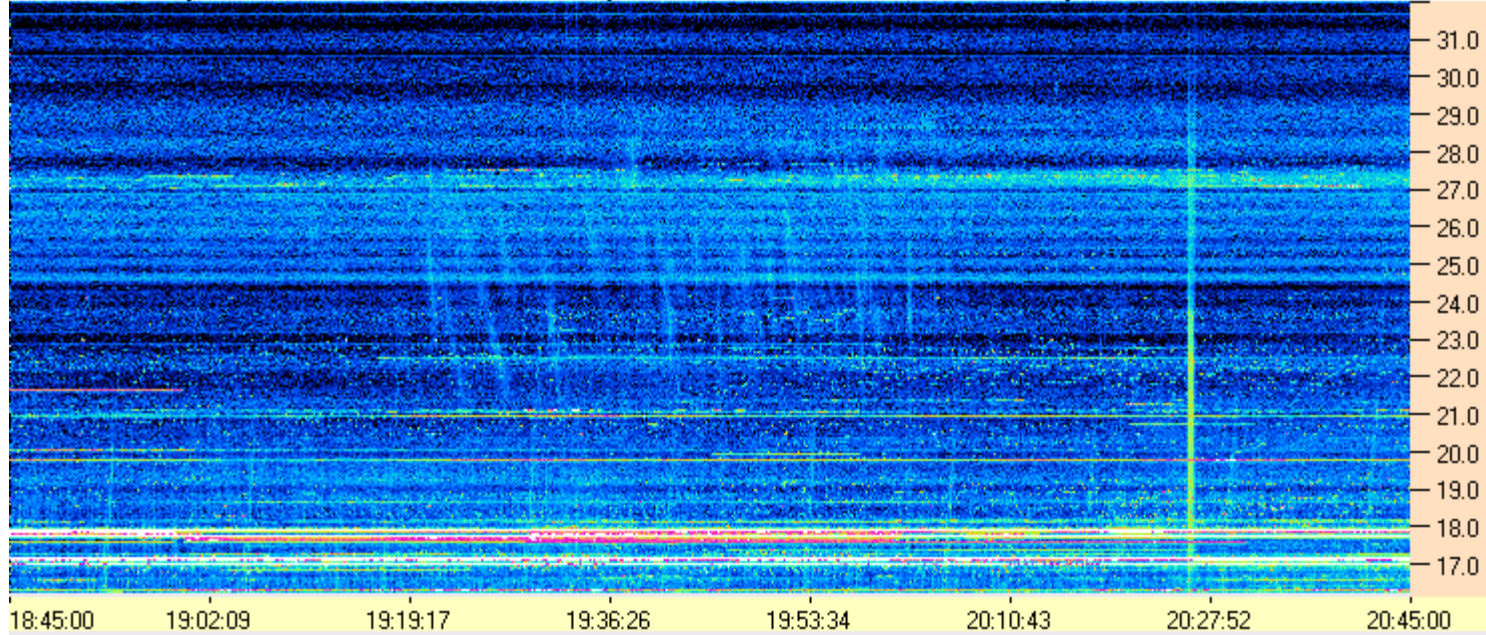
Dave

AJ4CO Observatory 16 Jul 2015, log entry 434





AJ4CO Observatory - 16 Jul 2015 - DPS 30 kHz IF on TFD Array in CP Mode - RCP MC +13 dB Correction Array 2014 12 18 B.csv Offset 2130 Gain 5.0



AJ4CO Observatory - 16 Jul 2015 - DPS 30 kHz IF on TFD Array in CP Mode - LCP MC +13 dB Correction Array 2014 12 18 B.csv Offset 2130 Gain 5.0

