

Subject: [radiojove-data] 24 Jun 2015 non-Io-A

From: Dave Typinski <davetyp@typnet.net>

Date: 06/26/2015 20:58

To: RadioJove-Data <radiojove-data@lists.nasa.gov>

Adding to Tom's nice report, here's some non-Io-A behind the line noise from Wednesday evening.

RCP dominant L bursting 2240-2257 UTC from 18 to 25 MHz, negatively drifting emission envelope. No modulation lanes visible.

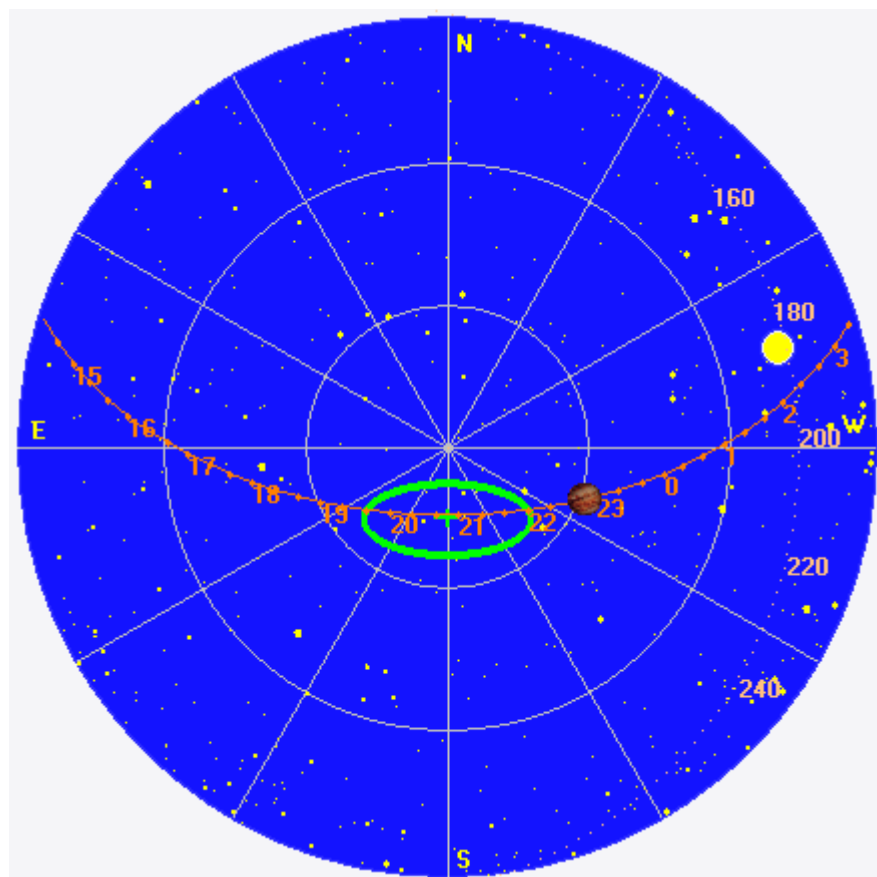
Jupiter was +26° to +30° off axis.

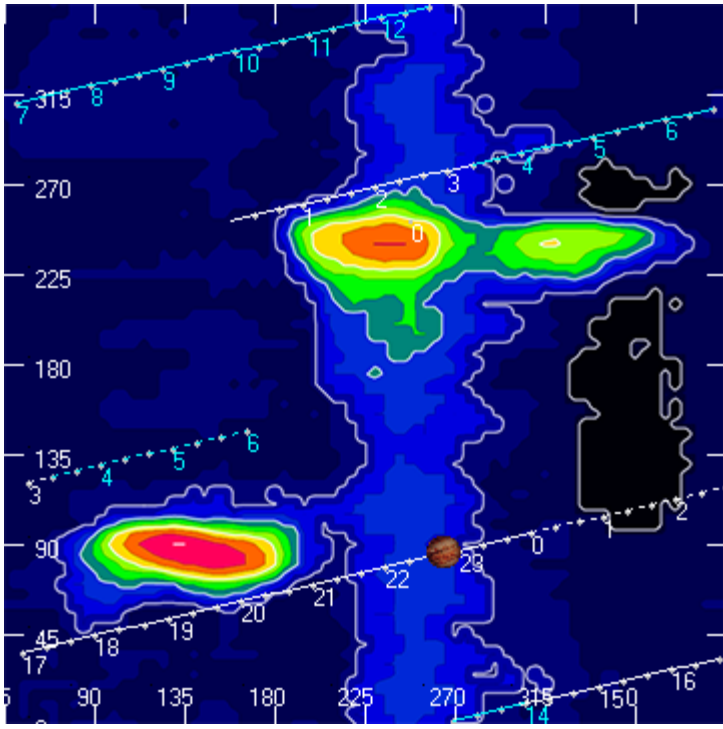
Jupiter was trailing the Sun by 47°.

--

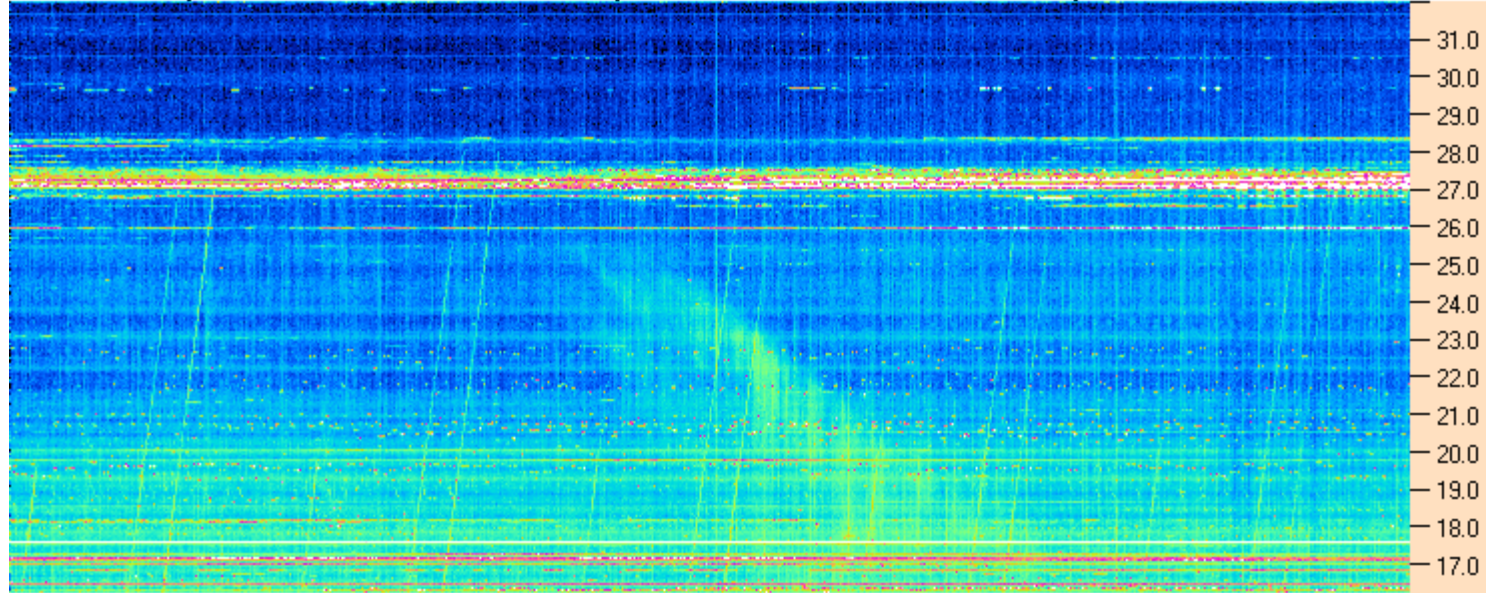
Dave

AJ4CO Observatory 24 Jun 2015, log entry 428





AJ4CO Observatory - 24 Jun 2015 - DPS 30 kHz IF on TFD Array in CP Mode - RCP MC +13 dB Correction Array 2014 12 18 B.csv Offset 2100 Gain 3.5



AJ4CO Observatory - 24 Jun 2015 - DPS 30 kHz IF on TFD Array in CP Mode - LCP MC +13 dB Correction Array 2014 12 18 B.csv Offset 2100 Gain 3.5

