

Subject: [radiojove-data] 11 May 2015 non-Io-B

From: Dave Typinski <davetyp@typnet.net>

Date: 05/12/2015 20:27

To: RadioJove-Data <radiojove-data@lists.nasa.gov>

Here's some weak, brief non-Io-B from Monday evening.

RCP dominant L bursting 2318 - 2331 UTC from 21 to 24 MHz, zero drift emission envelope. No modulation lanes visible.

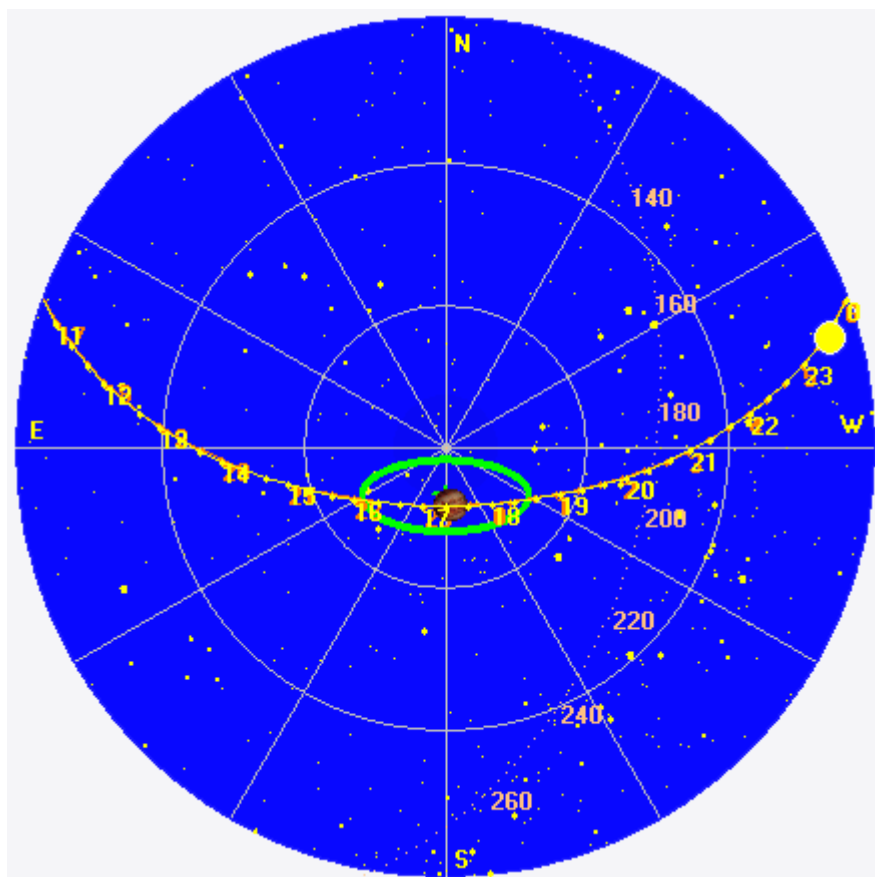
Jupiter was -3° to $+3^\circ$ off axis.

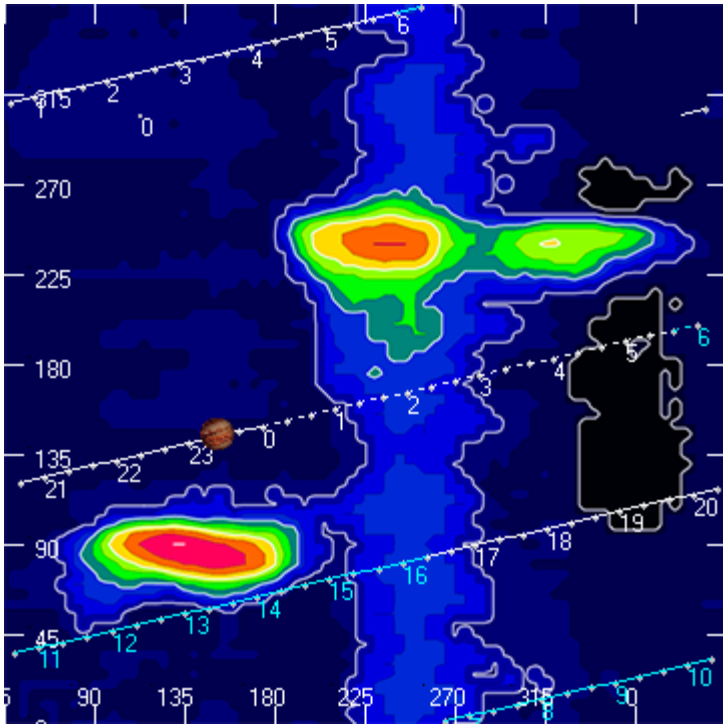
Jupiter was trailing the Sun by 83° .

--

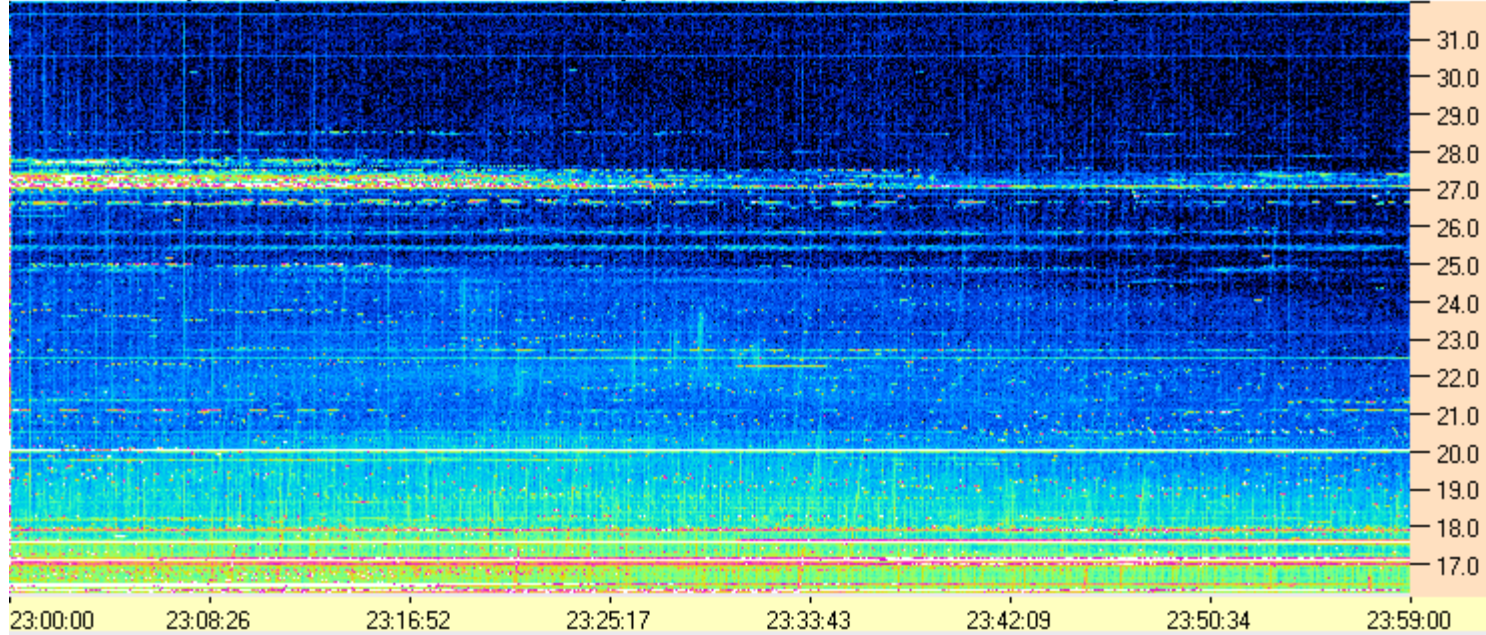
Dave

AJ4CO Observatory 11 May 2015, log entry 418





AJ4CO Observatory - 11 May 2015 - DPS 30 kHz IF on TFD Array in CP Mode - RCP MC +13 dB No Correction Array Offset 2100 Gain 5.0



AJ4CO Observatory - 11 May 2015 - DPS 30 kHz IF on TFD Array in CP Mode - LCP MC +13 dB No Correction Array Offset 2100 Gain 5.0

