

Subject: [radiojove-data] 09 May 2015 Io-B

From: Dave Typinski <davetyp@typnet.net>

Date: 05/12/2015 20:27

To: RadioJove-Data <radiojove-data@lists.nasa.gov>

Here's some weak, brief B from Saturday evening.

RCP dominant L bursting 2123 - 2135 UTC from 18 to 24 MHz, downward drifting emission envelope. No modulation lanes visible.

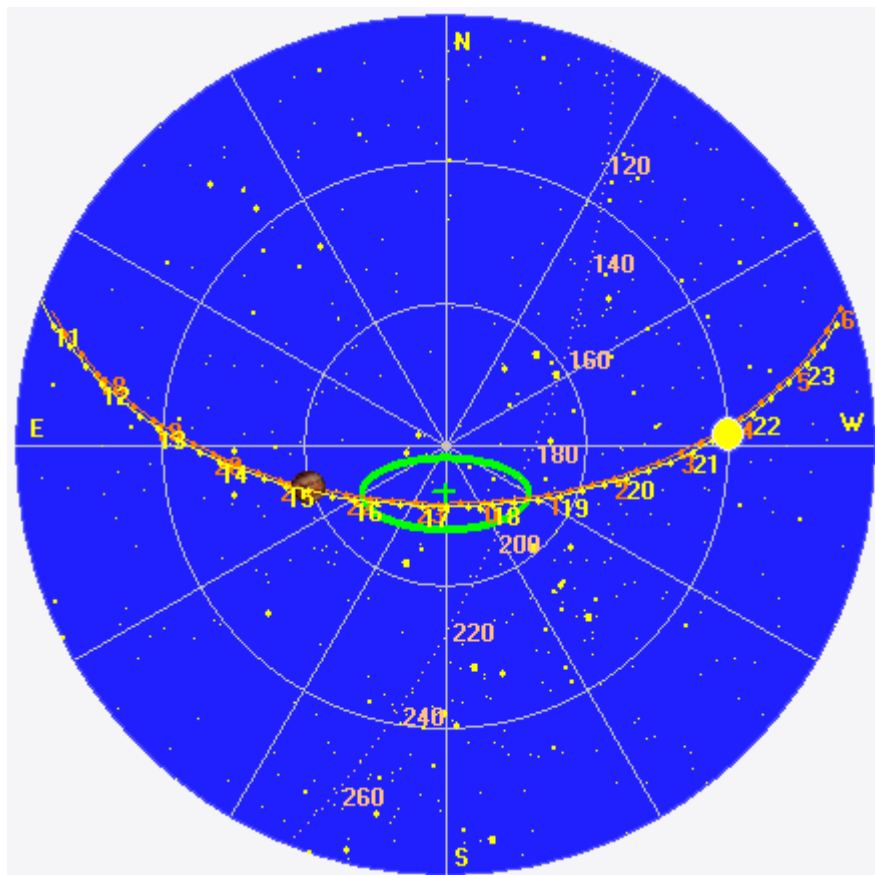
Jupiter was -30° to -27° off axis.

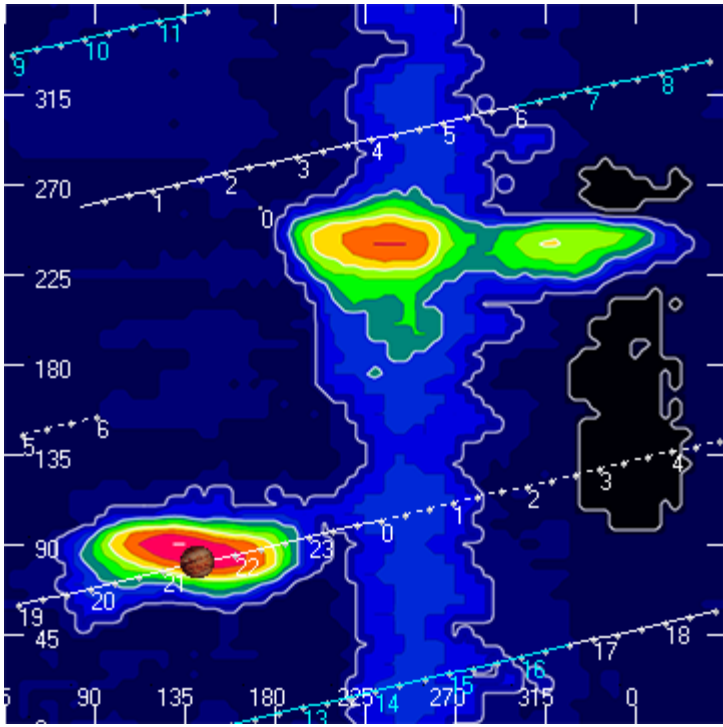
Jupiter was trailing the Sun by 85° .

--

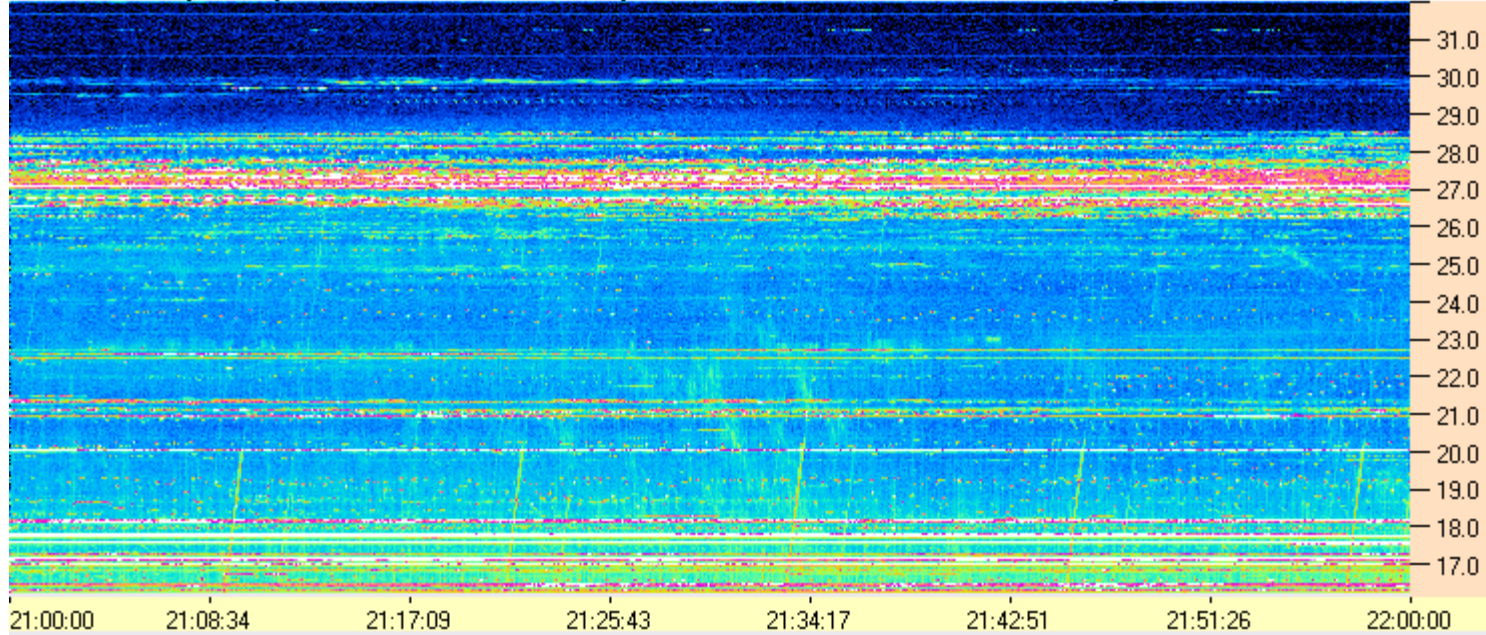
Dave

AJ4CO Observatory 09 May 2015, log entry 417

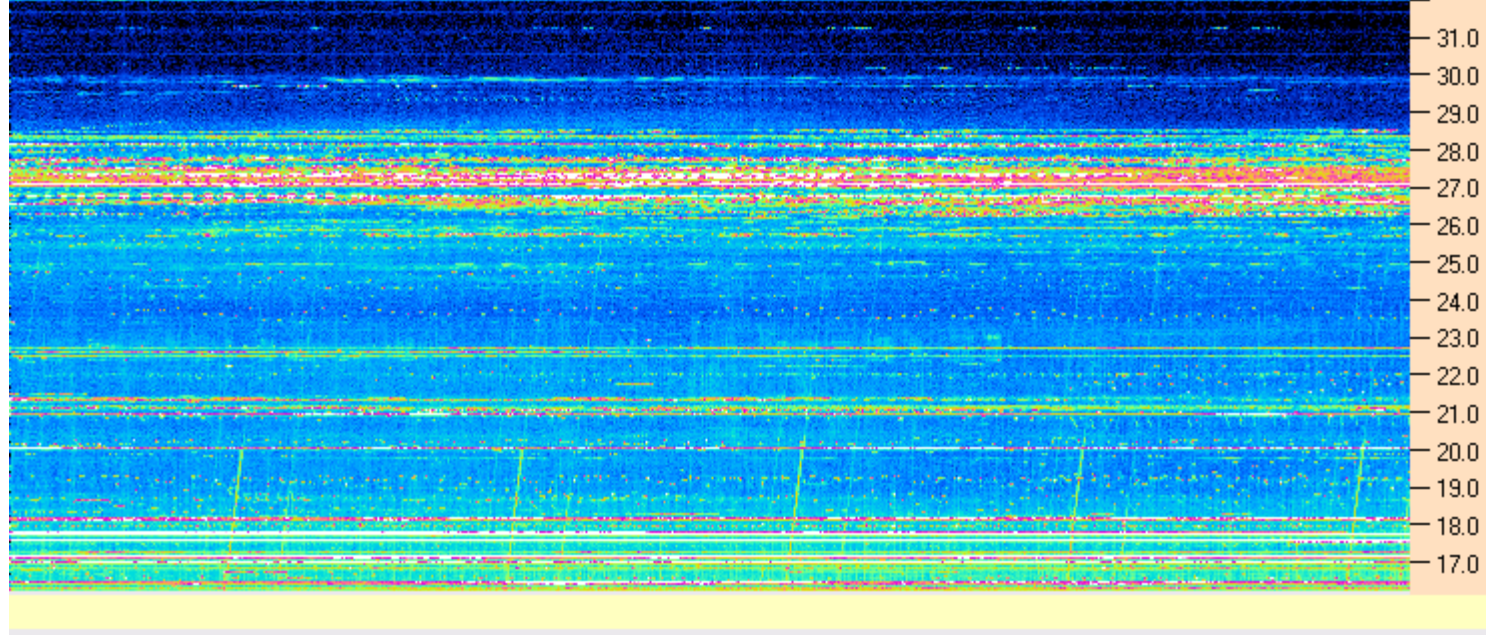




AJ4CO Observatory - 09 May 2015 - DPS 30 kHz IF on TFD Array in CP Mode - RCP MC +13 dB No Correction Array Offset 2120 Gain 4.0



AJ4CO Observatory - 09 May 2015 - DPS 30 kHz IF on TFD Array in CP Mode - LCP MC +13 dB No Correction Array Offset 2120 Gain 4.0



05/09/2015 by AJ4CO RSP in High Springs, FL

