

Subject: [radiojove-data] 07 May 2015 non-Io-A

From: Dave Typinski <davetyp@typnet.net>

Date: 05/12/2015 16:14

To: RadioJove-Data <radiojove-data@lists.nasa.gov>

Lo and behold, here's some weak, brief non-Io-A from Thursday evening.

RCP dominant L bursting 2238 - 2243 UTC from 21 to 24 MHz, downward drifting emission envelope. No modulation lanes visible.

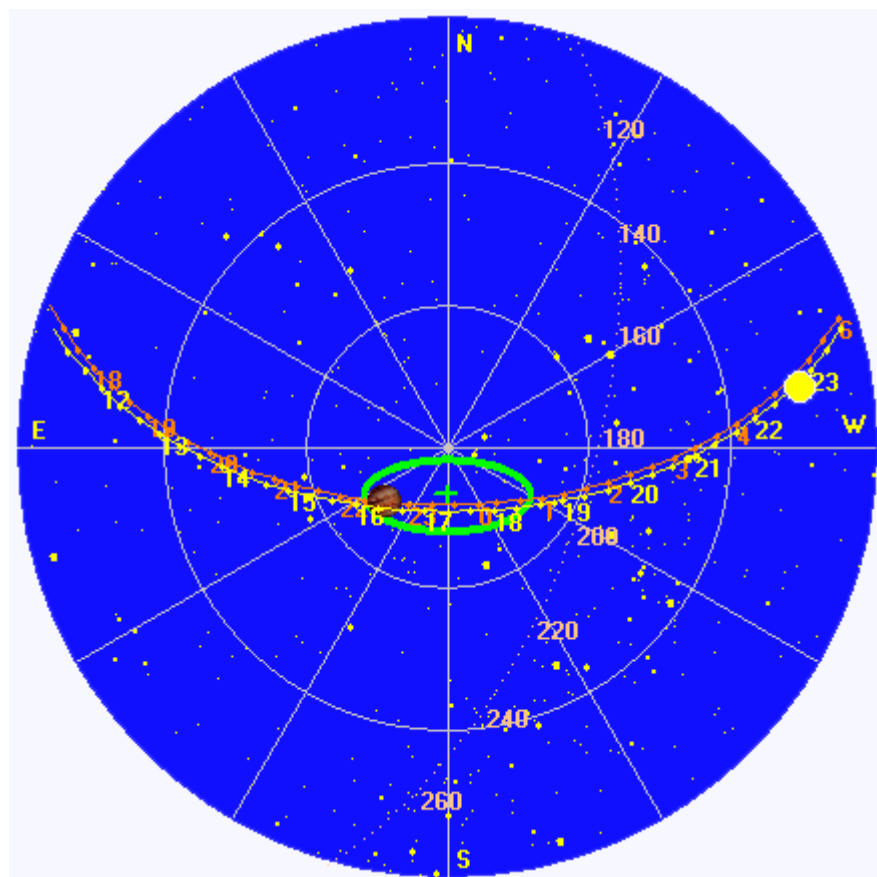
Jupiter was -14° to -13° off axis.

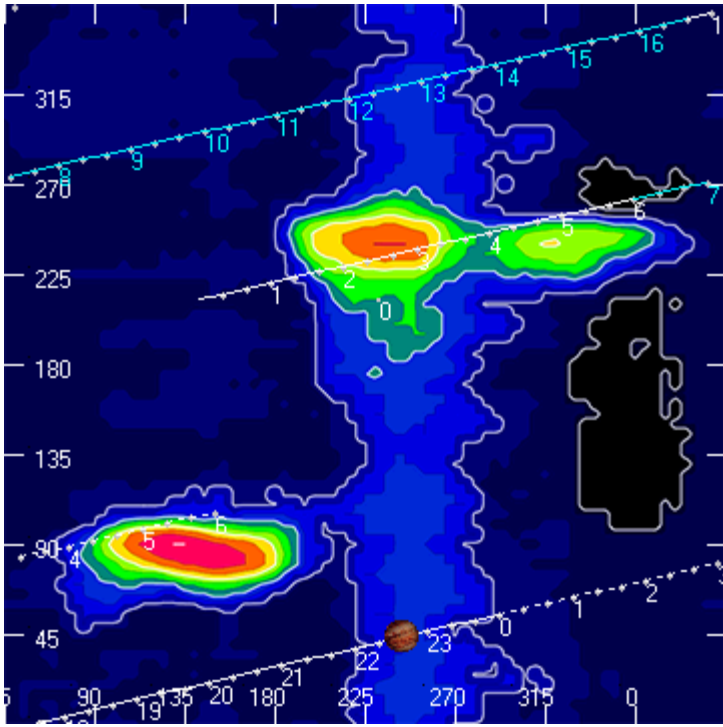
Jupiter was trailing the Sun by 87° .

--

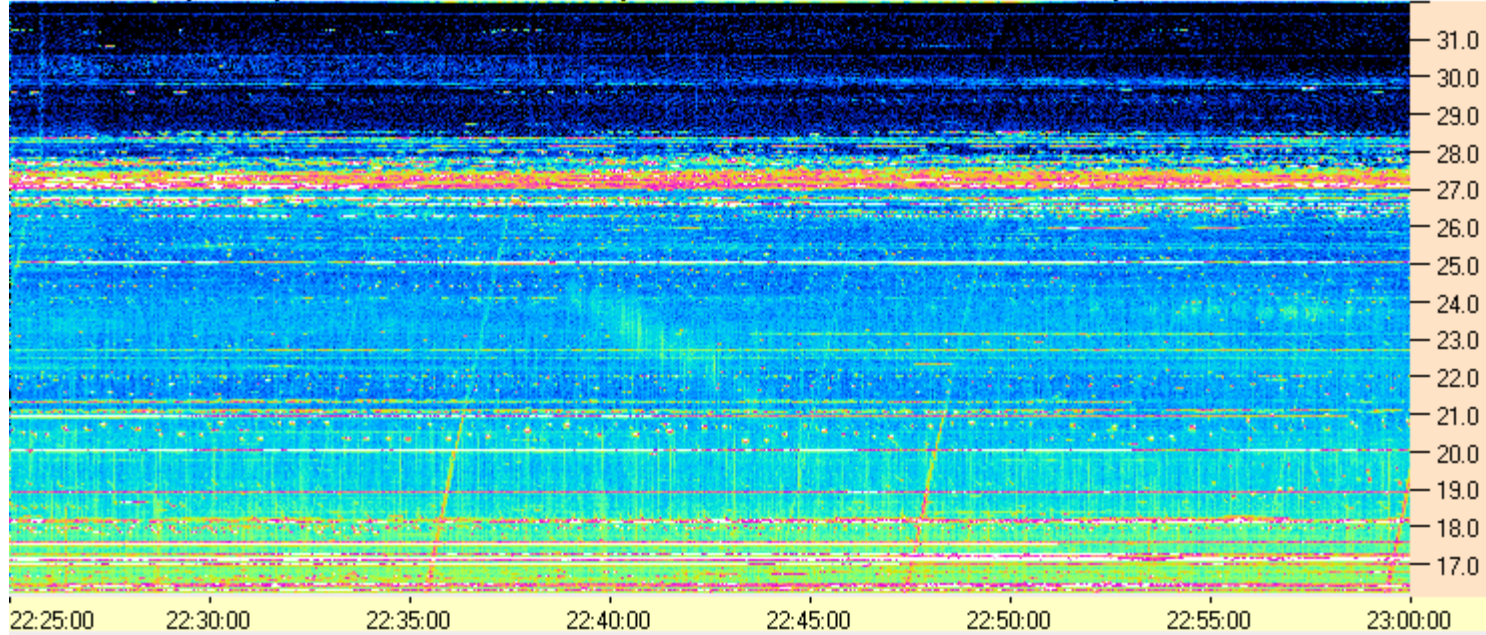
Dave

AJ4CO Observatory 07 May 2015, log entry 416





AJ4CO Observatory - 07 May 2015 - DPS 30 kHz IF on TFD Array in CP Mode - RCP MC +13 dB No Correction Array Offset 2150 Gain 4.0



AJ4CO Observatory - 07 May 2015 - DPS 30 kHz IF on TFD Array in CP Mode - LCP MC +13 dB No Correction Array Offset 2150 Gain 4.0

