

Subject: [radiojove-data] 07 May 2015 Io-A

From: Dave Typinski <davetyp@typnet.net>

Date: 05/09/2015 00:01

To: RadioJove-Data <radiojove-data@lists.nasa.gov>

Adding to Tom's nice report, here's some very weak, barely visible Io-A from Thursday morning.

This is a weird one. RCP below 26 MHz and LCP above 26. I would suspect the off-axis angle of playing a role, except it wasn't that far off, and there have been plenty of observations made with this TFD array with Jupiter in the same off axis angle that do not show any polarization funny business. So, I'm not sure what's happening here.

RCP dominant L bursting 0128 - 0244 UTC from 16 to 27 MHz, downward drifting emission envelope. No modulation lanes visible.

LCP dominant L bursting 0149 - 0240 UTC from 22 to 31 MHz, downward drifting emission envelope. No modulation lanes visible.

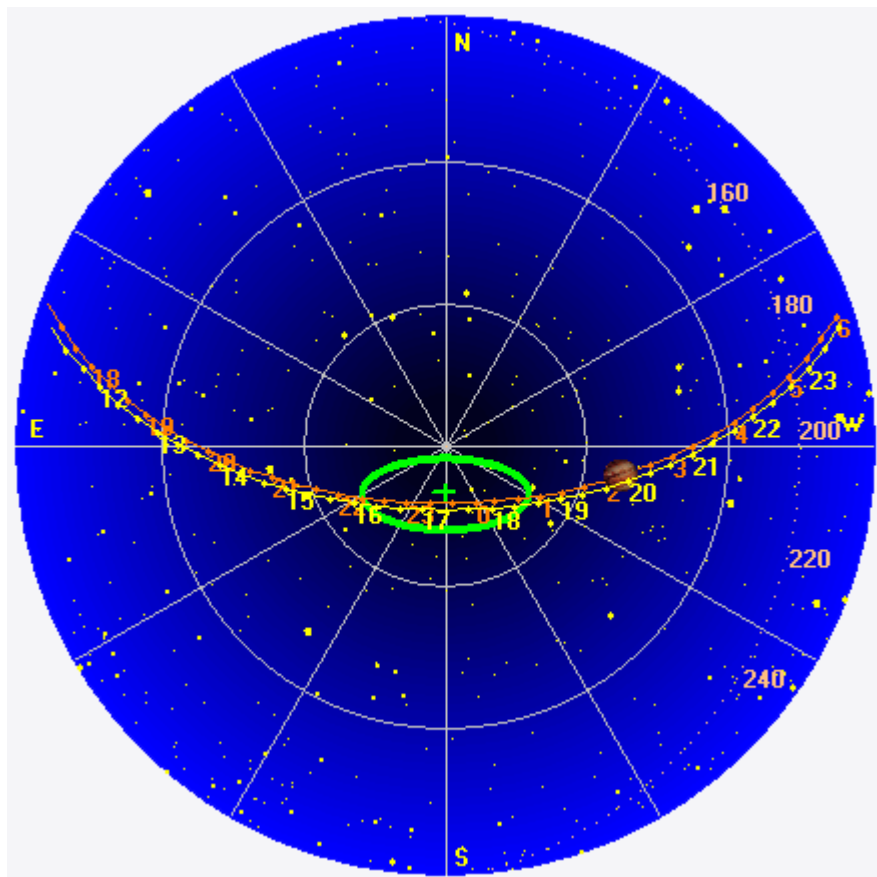
Jupiter was +26° to +44° off axis.

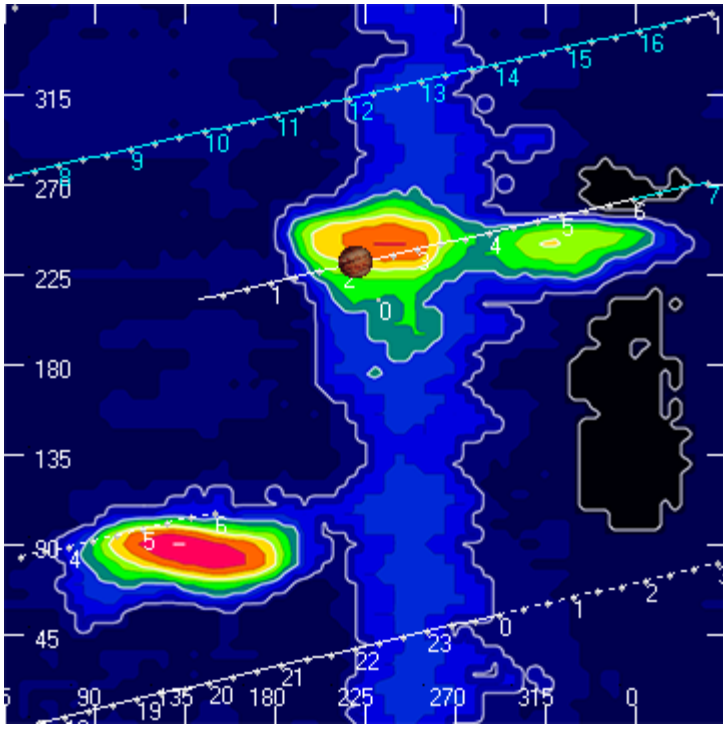
Jupiter was trailing the Sun by 88°.

--

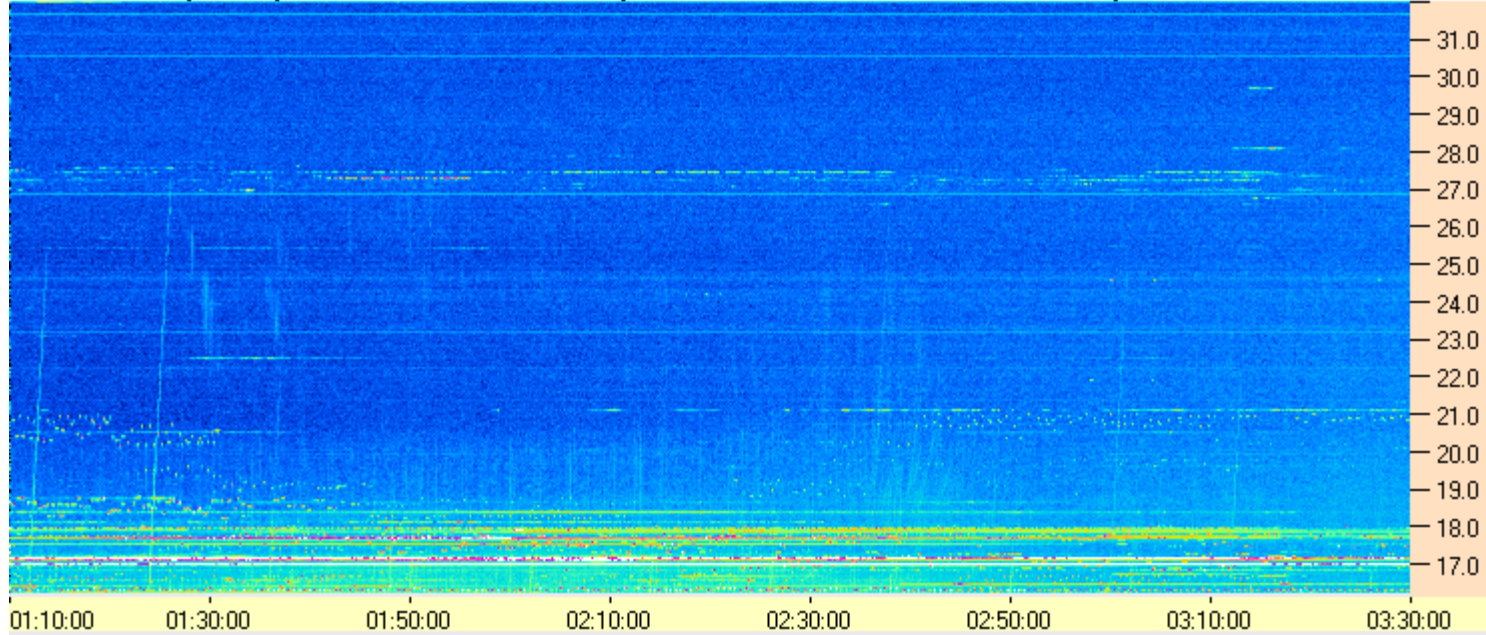
Dave

AJ4CO Observatory 07 May 2015, log entry 414, 415





AJ4CO Observatory - 07 May 2015 - DPS 30 kHz IF on TFD Array in CP Mode - RCP MC +13 dB No Correction Array Offset 2050 Gain 5.0



AJ4CO Observatory - 07 May 2015 - DPS 30 kHz IF on TFD Array in CP Mode - LCP MC +13 dB No Correction Array Offset 2050 Gain 5.0

