

**Subject:** [radiojove-data] 18 Apr 2015 non-Io-A

**From:** Dave Typinski <davetyp@typnet.net>

**Date:** 04/20/2015 22:18

**To:** RadioJove-Data <radiojove-data@lists.nasa.gov>

Adding to Wes's nice report, here's some non-Io-A from Saturday morning.

RCP dominant L bursting 0159-0227 UTC from 18 to 26 MHz, vertex late arc shape, no modulation lanes visible.

Weak line noise throughout.

Jupiter was +17° to +23° off axis.

Jupiter was trailing the Sun by 105°.

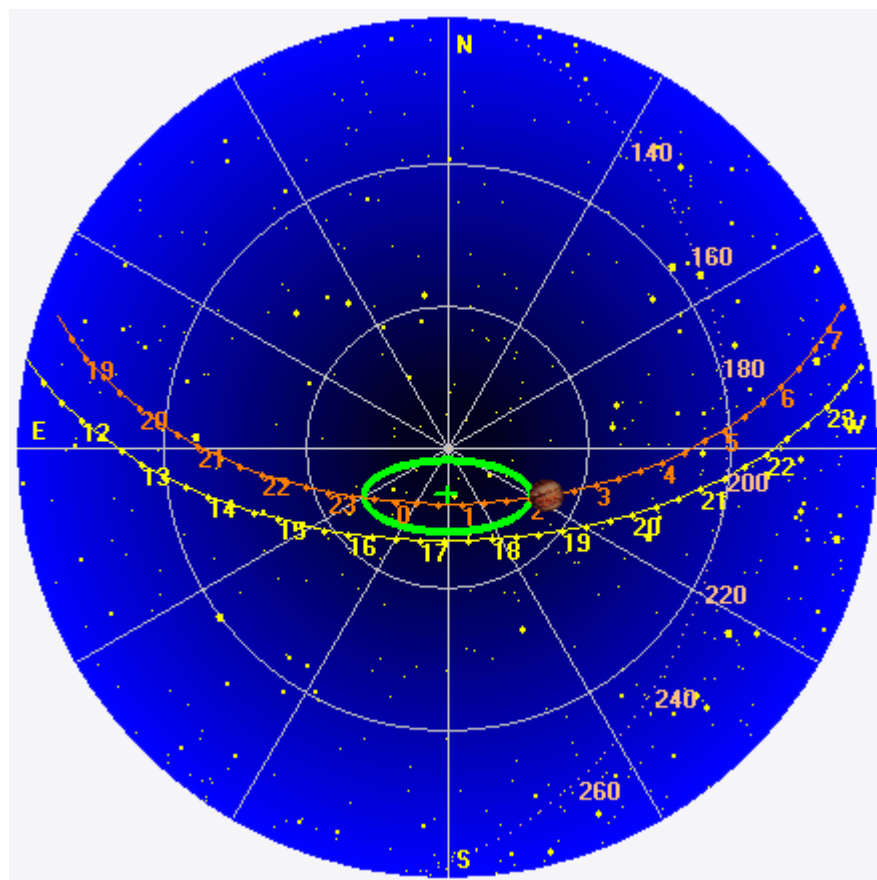
--

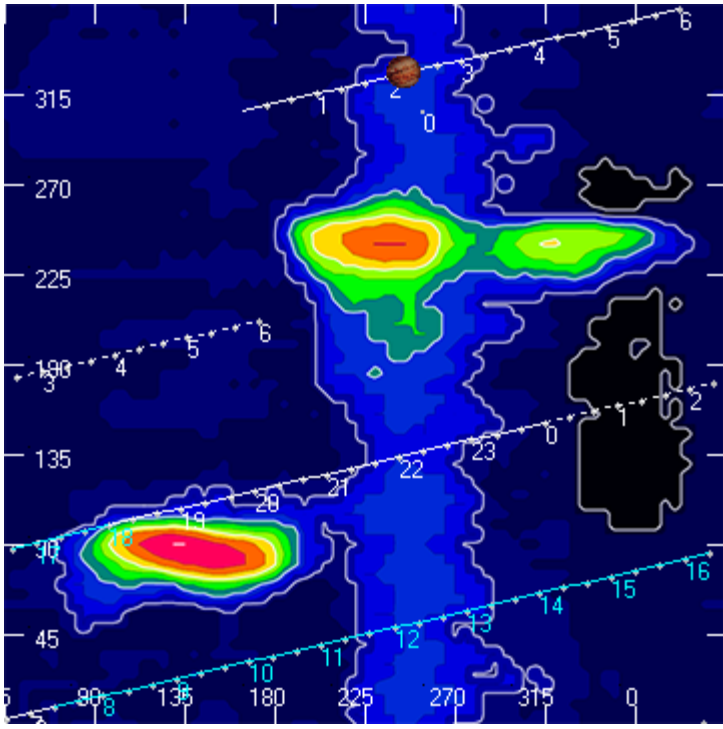
Dave

---

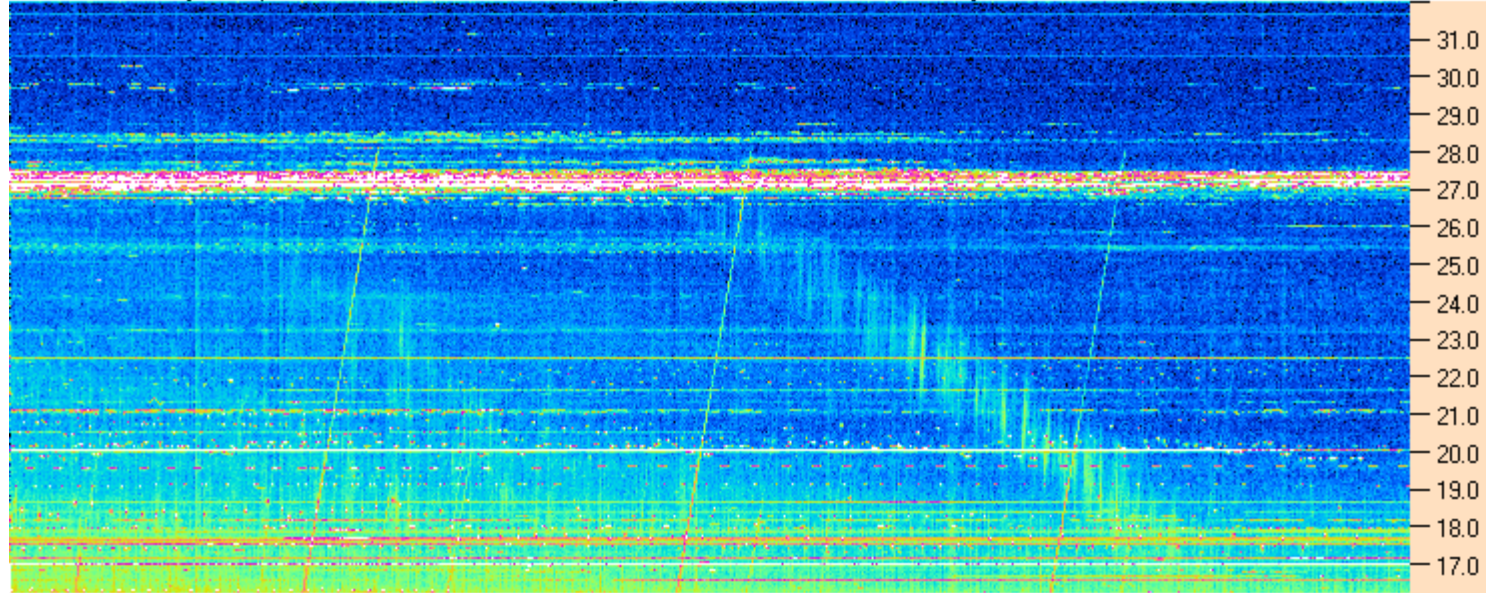
**AJ4CO Observatory 18 Apr 2015, log entry 407**

---



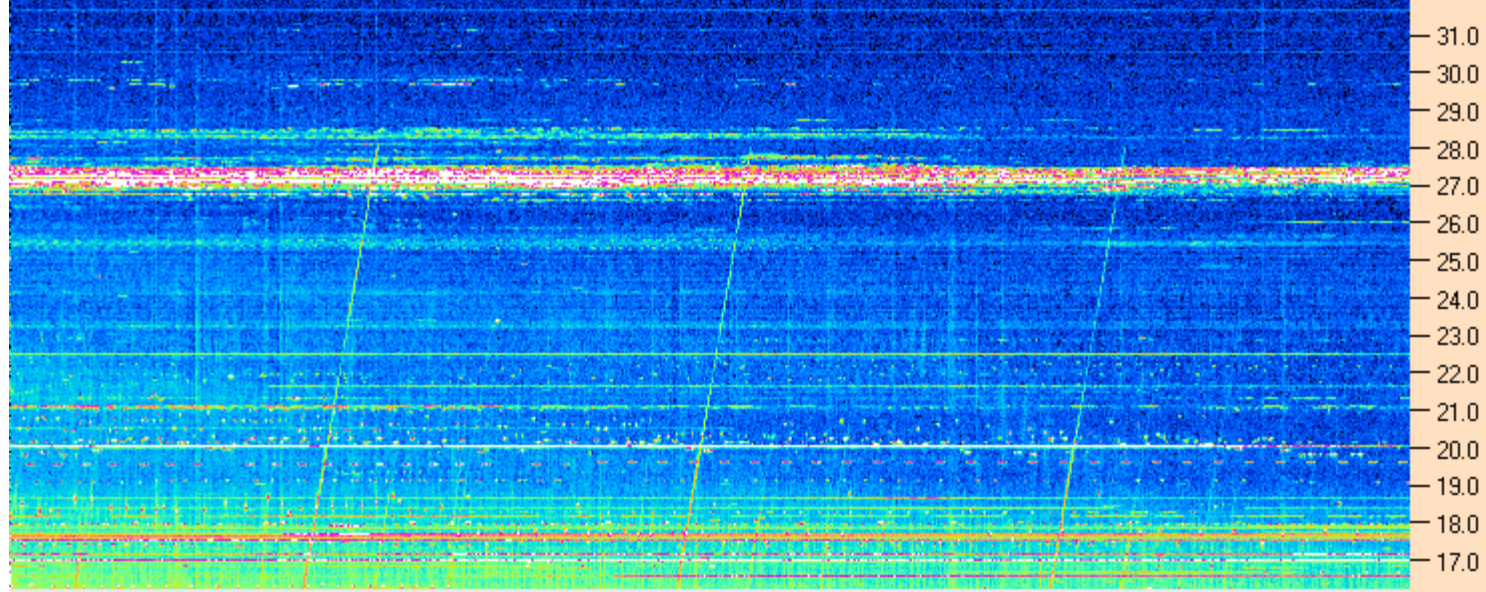


AJ4CO Observatory - 18 Apr 2015 - DPS 30 kHz IF on TFD Array in CP Mode - RCP Correction Array 2014 12 18 B.csv Offset 2070 Gain 5.0



01:50:00 01:56:26 02:02:52 02:09:17 02:15:43 02:22:09 02:28:34 02:35:00

AJ4CO Observatory - 18 Apr 2015 - DPS 30 kHz IF on TFD Array in CP Mode - LCP Correction Array 2014 12 18 B.csv Offset 2070 Gain 5.0



04/18/2015 by AJ4CO RSP in High Springs, FL

