

Subject: [radiojove-data] 14 Apr 2015 Io-A

From: Dave Typinski <davetyp@typnet.net>

Date: 04/19/2015 00:28

To: RadioJove-Data <radiojove-data@lists.nasa.gov>

Here's some Io-A from Tuesday morning.

RCP dominant L bursting 0105-0134 UTC from 16 to 24 MHz, vertex late arcs, no modulation lanes visible.

Yes, this emission occurred in the Io-C region of the phase plane, but it is RCP emission, so I'm labeling it Io-A. We have seen Io-A's RCP emission go far into the Io-C zone like this many times before.

Line noise throughout.

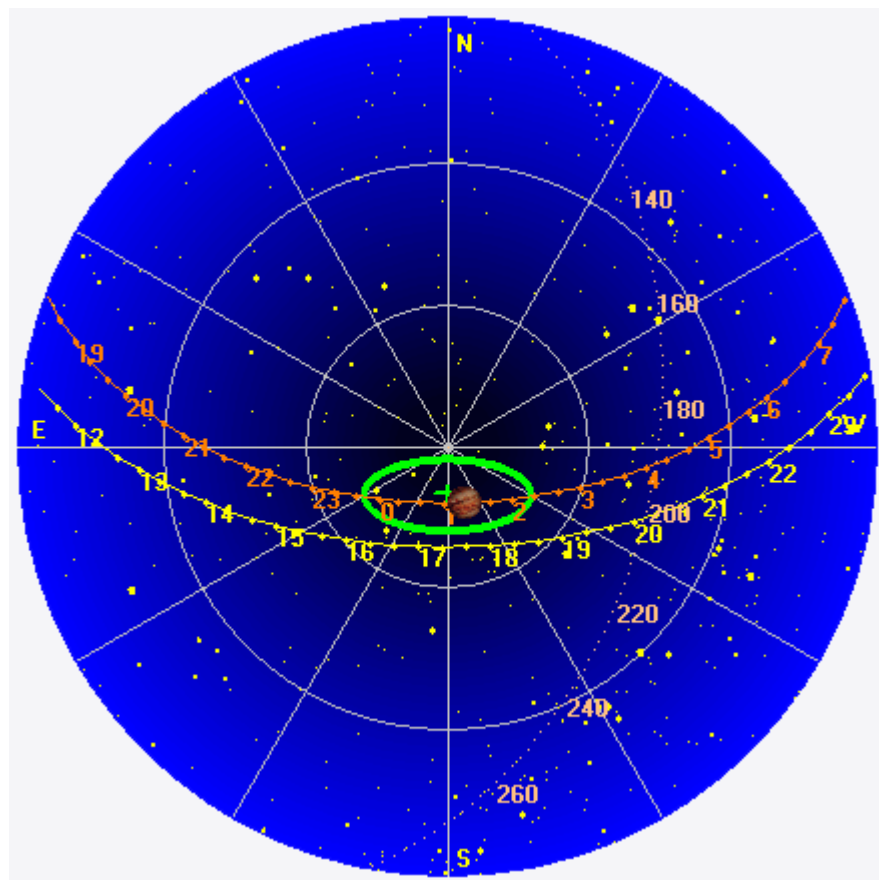
Jupiter was +2° to +7° off axis.

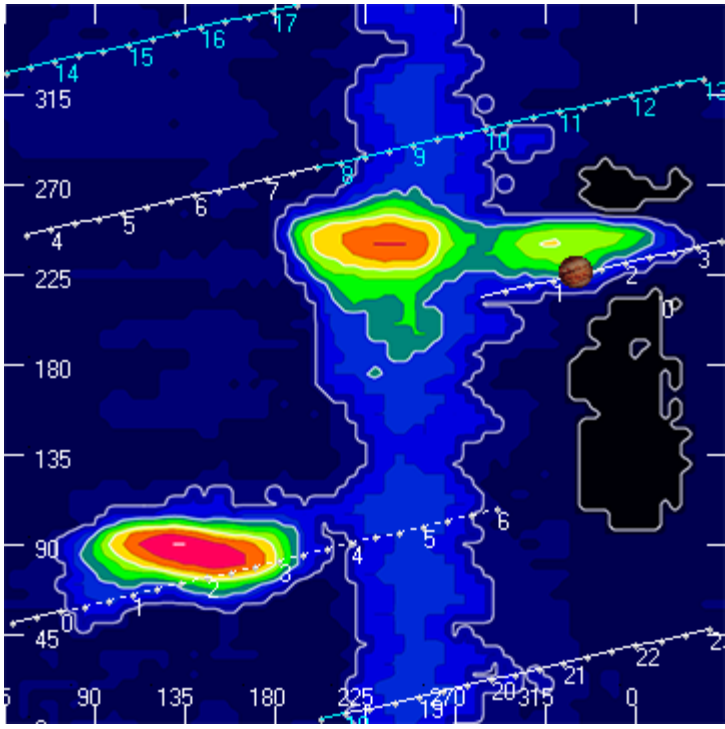
Jupiter was trailing the Sun by 109°.

--

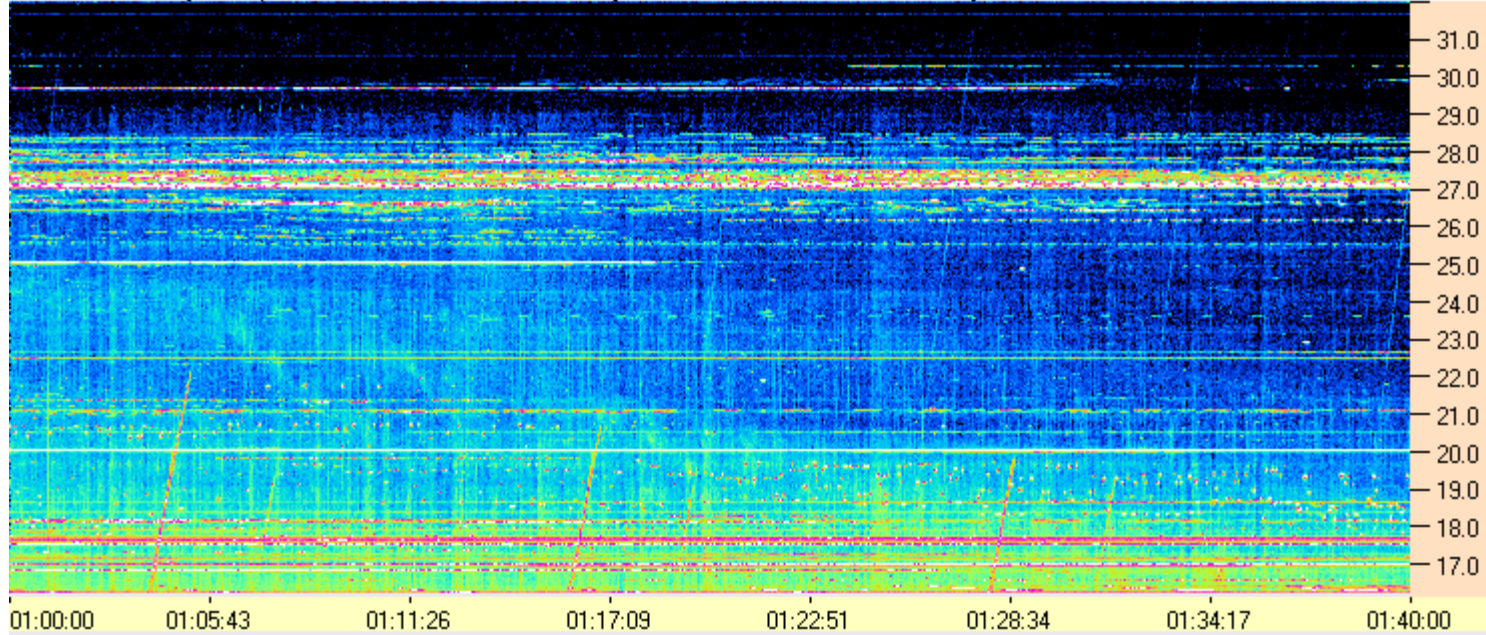
Dave

AJ4CO Observatory 14 Apr 2015, log entry 405





AJ4CO Observatory - 14 Apr 2015 - DPS 30 kHz IF on TFD Array in CP Mode - RCP Correction Array 2014 12 18 B.csv Offset 2150 Gain 5.0



AJ4CO Observatory - 14 Apr 2015 - DPS 30 kHz IF on TFD Array in CP Mode - LCP Correction Array 2014 12 18 B.csv Offset 2150 Gain 5.0

