

Subject: [radiojove-data] 13 Apr 2015 non-Io-A

From: Dave Typinski <davetyp@typnet.net>

Date: 04/19/2015 00:28

To: RadioJove-Data <radiojove-data@lists.nasa.gov>

Here's some non-Io-C from Monday morning.

RCP dominant L bursting 0211-0237 UTC from 18 to 23 MHz, vertex late arcs, no modulation lanes visible.

Line noise throughout.

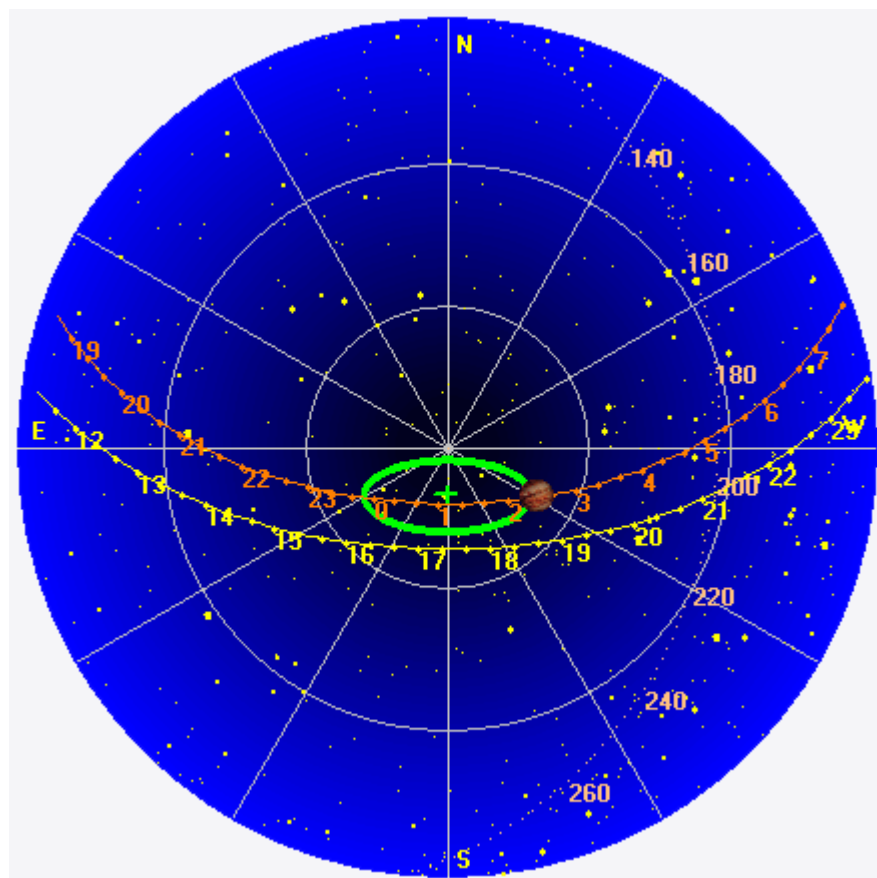
Jupiter was +15° to +21° off axis.

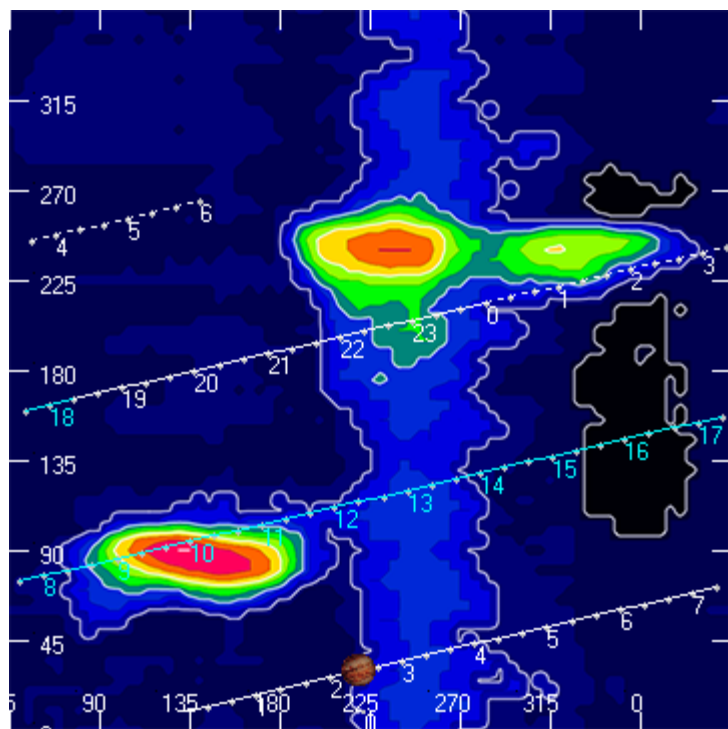
Jupiter was trailing the Sun by 110°.

--

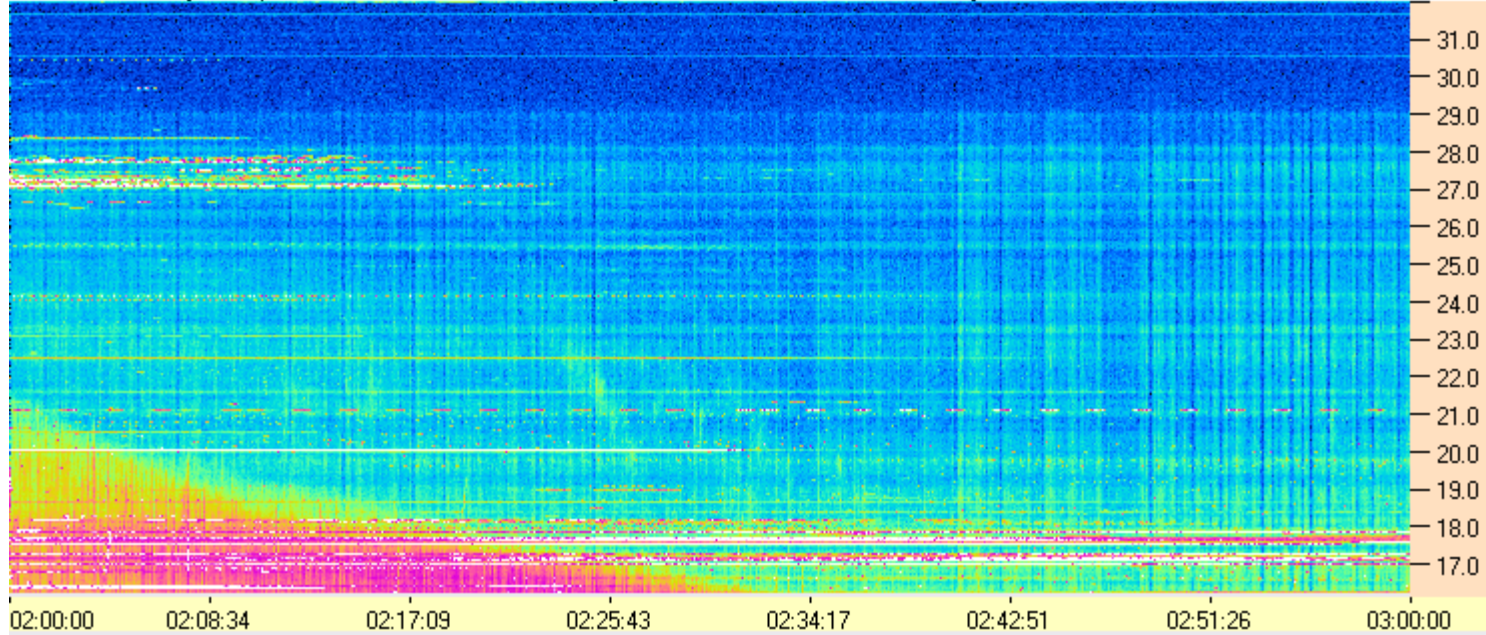
Dave

AJ4CO Observatory 13 Apr 2015, log entry 404





AJ4CO Observatory - 13 Apr 2015 - DPS 30 kHz IF on TFD Array in CP Mode - RCP Correction Array 2014 12 18 B.csv Offset 2060 Gain 5.0



AJ4CO Observatory - 13 Apr 2015 - DPS 30 kHz IF on TFD Array in CP Mode - LCP Correction Array 2014 12 18 B.csv Offset 2060 Gain 5.0

