

Subject: [radiojove-data] 09 Apr 2015 non-Io-C

From: Dave Typinski <davetyp@typnet.net>

Date: 04/13/2015 23:07

To: RadioJove-Data <radiojove-data@lists.nasa.gov>

Adding to Tom & David's nice reports, here's some non-Io-C from Thursday morning.

LCP dominant L bursting 0215-0329 UTC from 16 to 20 MHz, indeterminate arc shape, no modulation lanes visible.

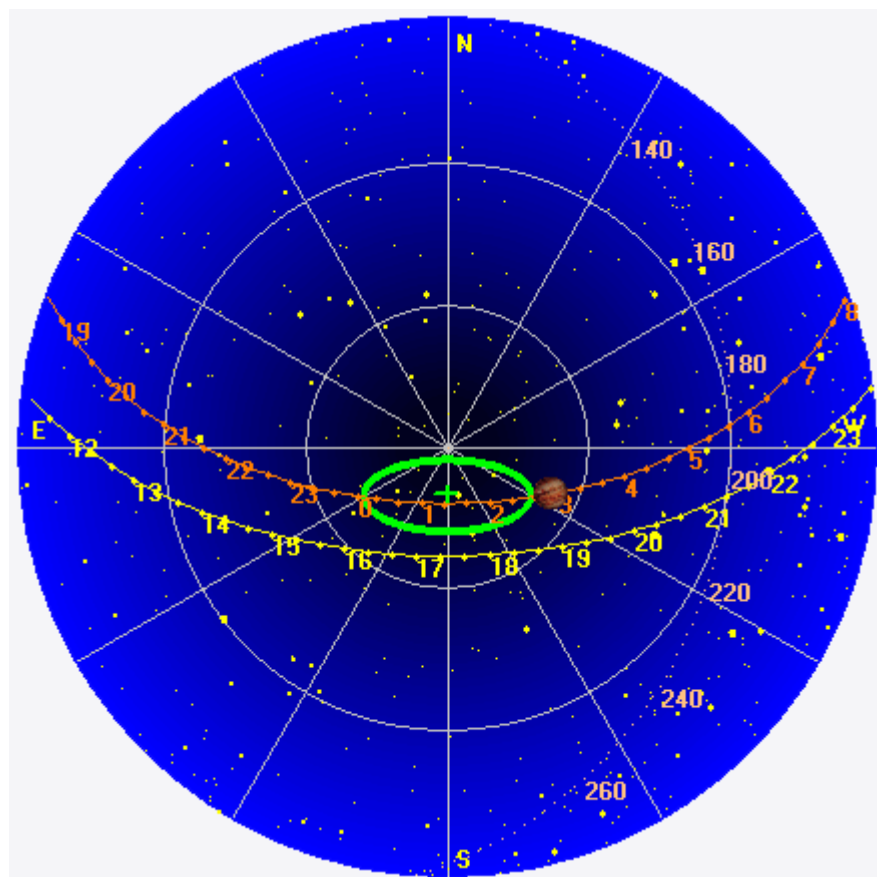
Jupiter was +12° to +30° off axis.

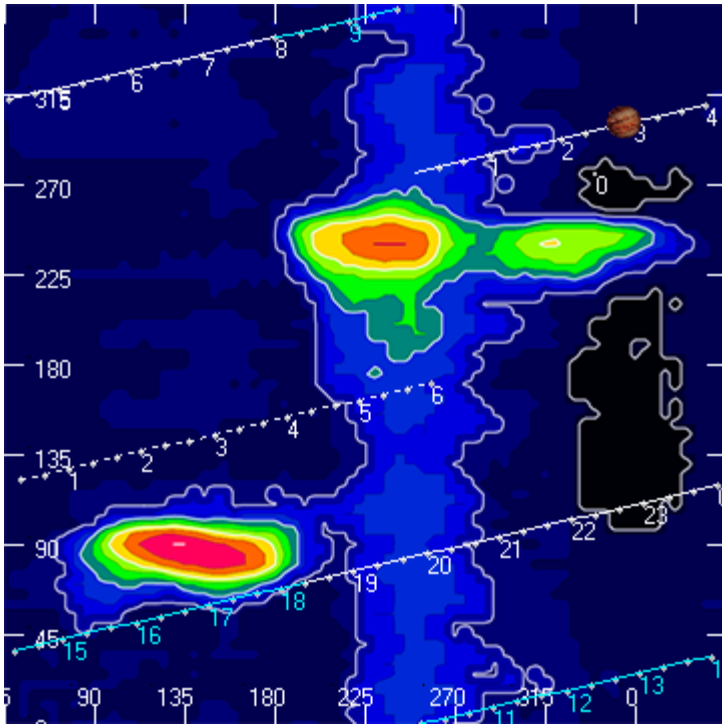
Jupiter was trailing the Sun by 114°.

--

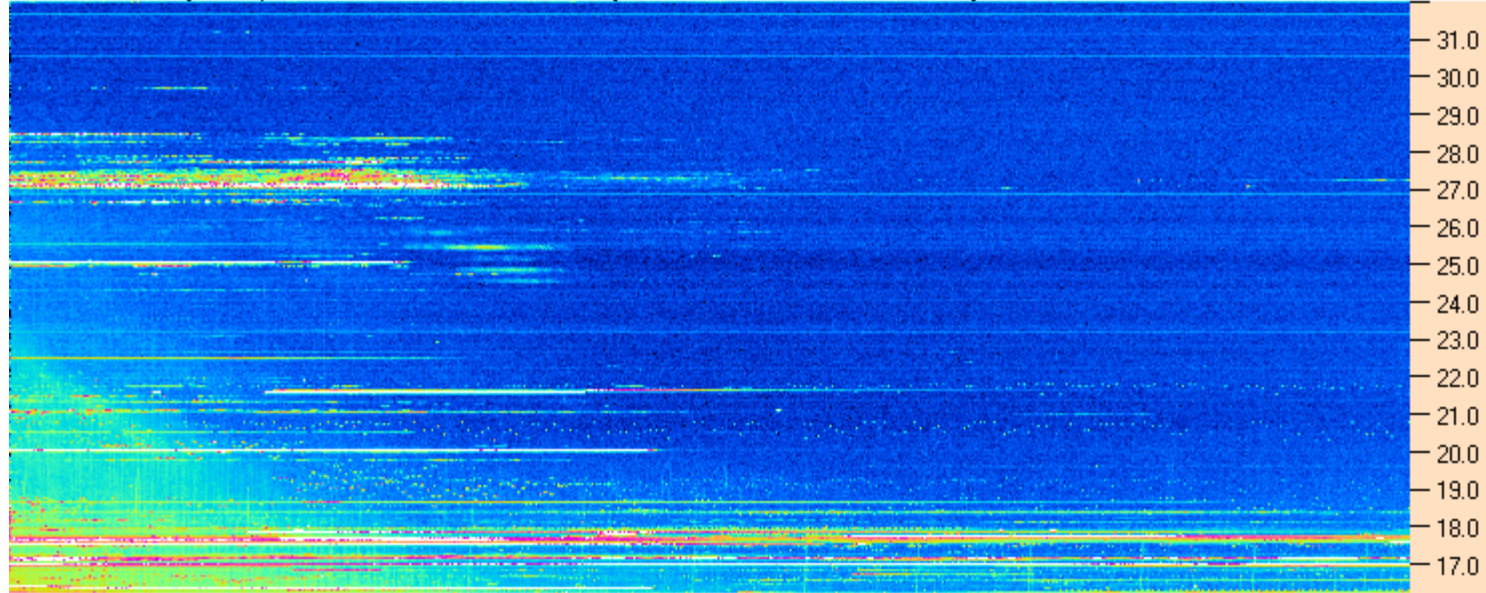
Dave

AJ4CO Observatory 09 Apr 2015, log entry 403





AJ4CO Observatory - 09 Apr 2015 - DPS 30 kHz IF on TFD Array in CP Mode - RCP Correction Array 2014 12 18 B.csv Offset 2060 Gain 5.0



01:30:00 01:51:26 02:12:52 02:34:17 02:55:43 03:17:09 03:38:34 04:00:00

AJ4CO Observatory - 09 Apr 2015 - DPS 30 kHz IF on TFD Array in CP Mode - LCP Correction Array 2014 12 18 B.csv Offset 2060 Gain 5.0

