

**Subject:** [radiojove-data] 07 Apr 2015 Io-C / non-Io-B

**From:** Dave Typinski <davetyp@typnet.net>

**Date:** 04/13/2015 23:06

**To:** RadioJove-Data <radiojove-data@lists.nasa.gov>

Adding to David's nice report, here's some Io-C and non-Io-B from Tuesday morning.

LCP dominant L bursting 0133-0204 UTC from 16 to 21 MHz, vertex late arcs, no modulation lanes visible.

LCP dominant L bursting 0310-0330 UTC from 16 to 18 MHz, indeterminate arc shape, no modulation lanes visible.

Jupiter was +2° to +26° off axis.

Jupiter was trailing the Sun by 116°.

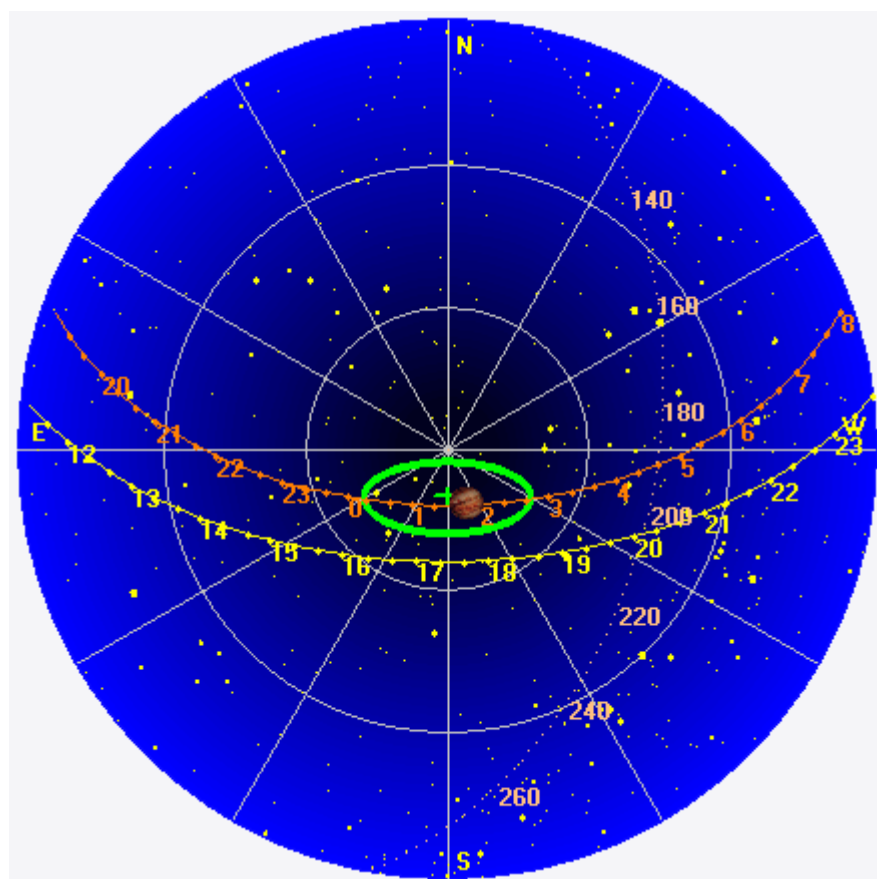
--

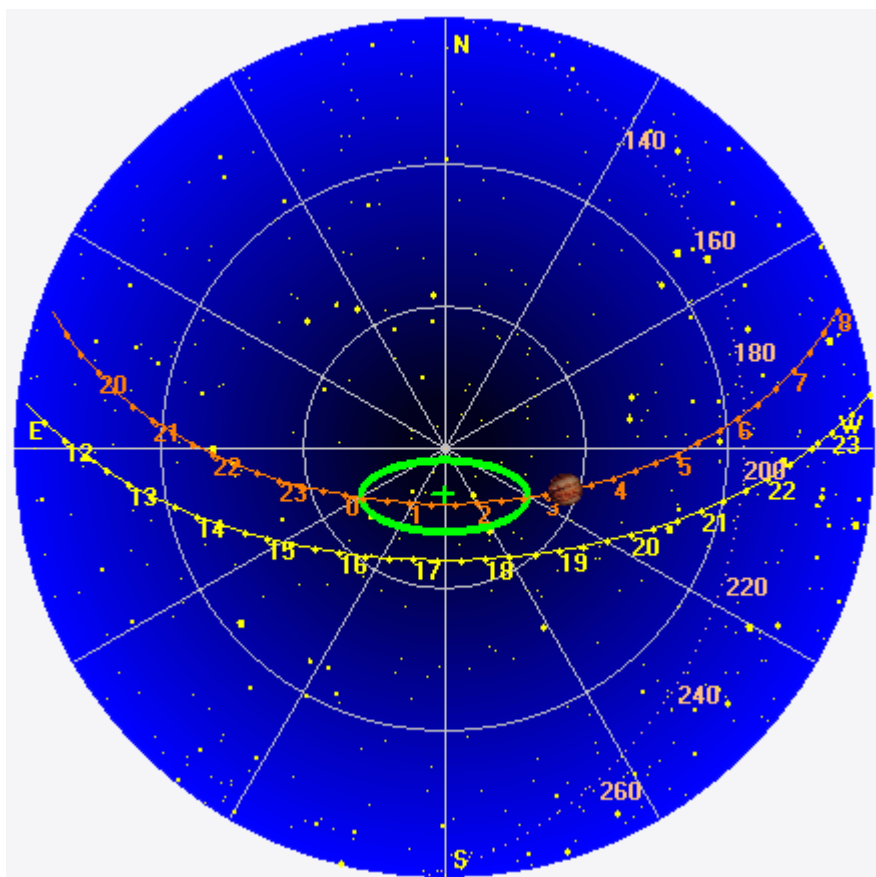
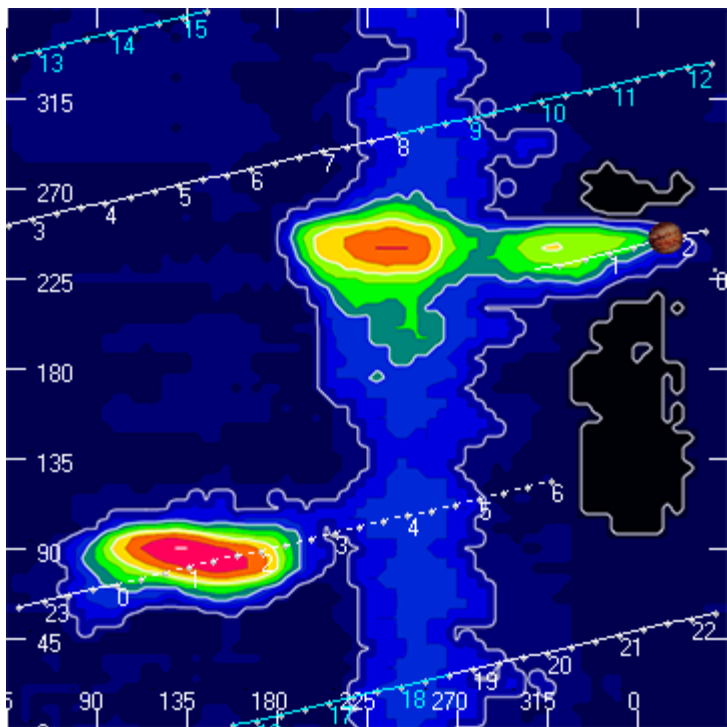
Dave

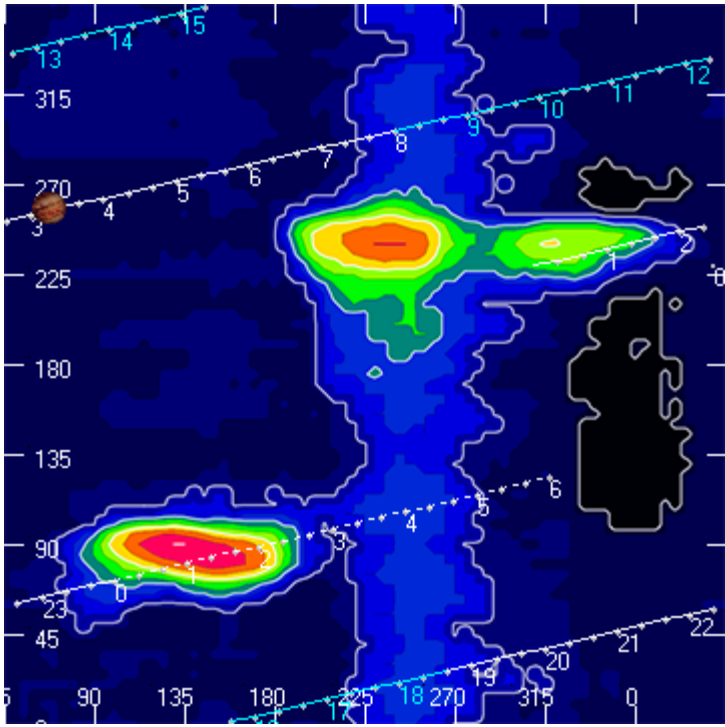
---

**AJ4CO Observatory 07 Apr 2015, log entry 399, 400**

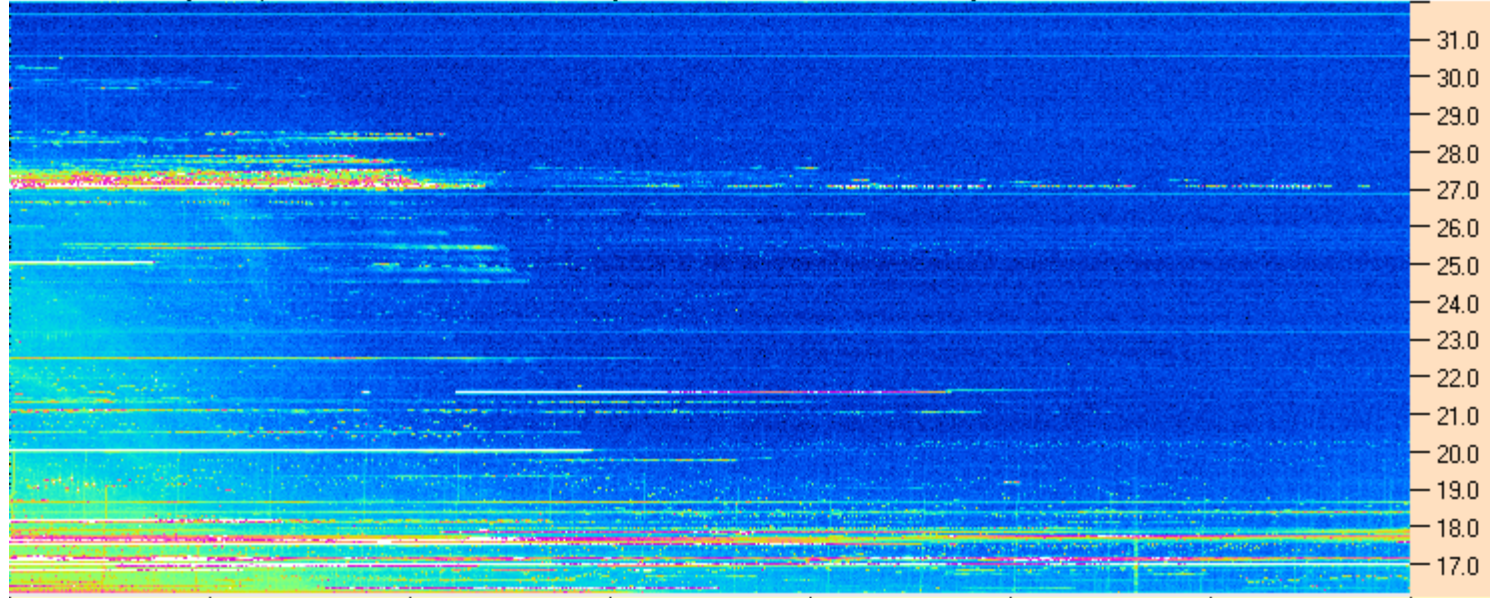
---







AJ4CO Observatory - 07 Apr 2015 - DPS 30 kHz IF on TFD Array in CP Mode - RCP Correction Array 2014 12 18 B.csv Offset 2060 Gain 5.0



01:00:00 01:25:43 01:51:26 02:17:09 02:42:52 03:08:34 03:34:17 04:00:00

AJ4CO Observatory - 07 Apr 2015 - DPS 30 kHz IF on TFD Array in CP Mode - LCP Correction Array 2014 12 18 B.csv Offset 2060 Gain 5.0

