

Subject: [radiojove-data] 04 Apr 2015 non-Io-A & non-Io-C

From: Dave Typinski <davetyp@typnet.net>

Date: 04/06/2015 01:47

To: RadioJove-Data <radiojove-data@lists.nasa.gov>

Here's some non-Io-A & non-Io-C from Saturday morning.

RCP dominant L bursting 0105-0236 UTC from 16 to 26 MHz, vertex late arcs, no modulation lanes visible.

LCP dominant L bursting 0149-0344 UTC from 16 to 26 MHz, vertex late arcs, no modulation lanes visible.

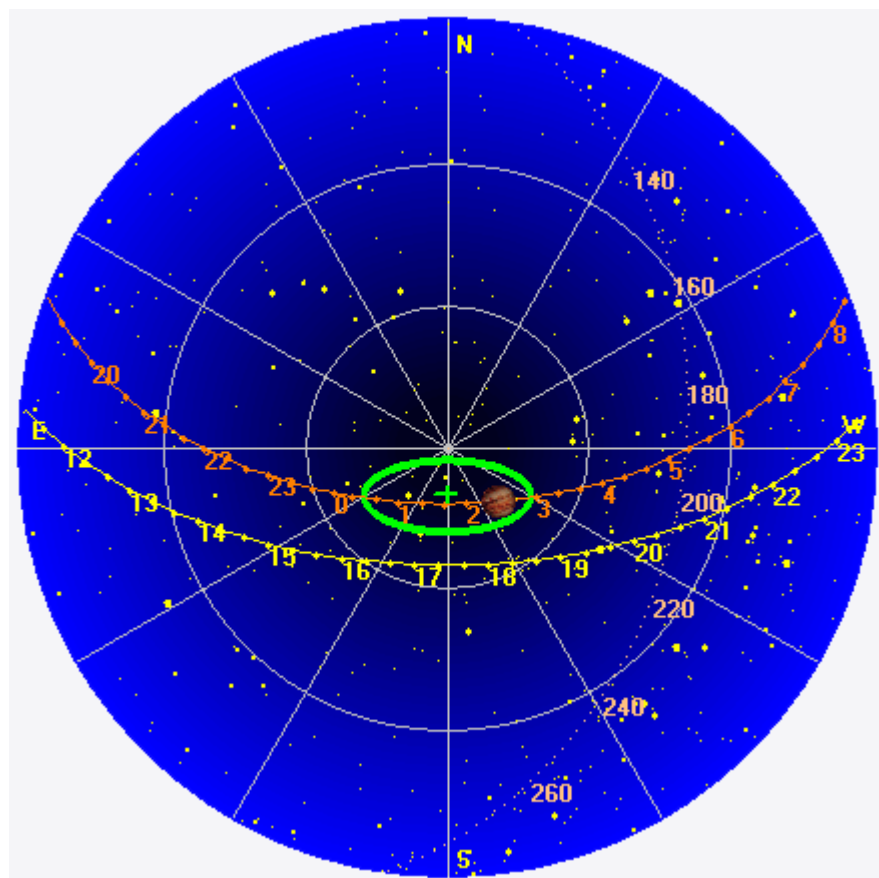
Jupiter was -9° to $+29^\circ$ off axis.

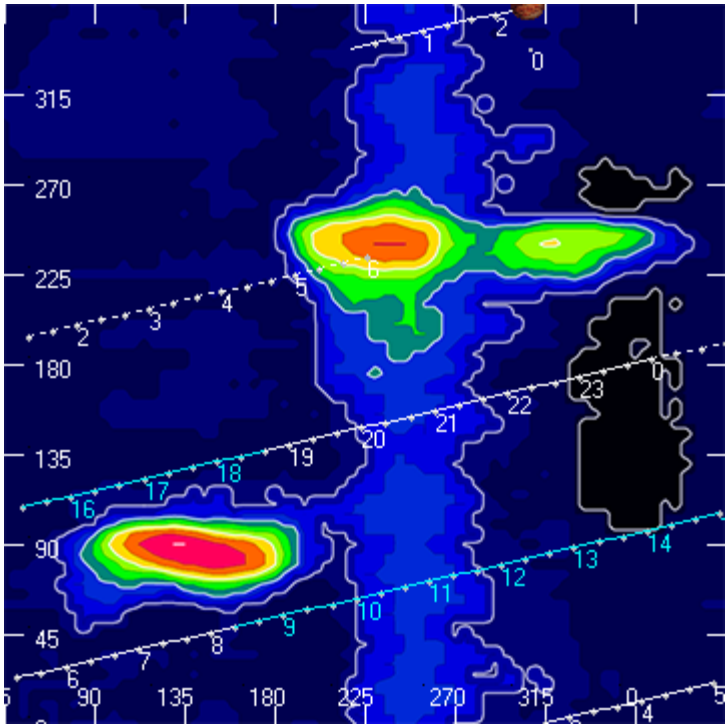
Jupiter was trailing the Sun by 119° .

--

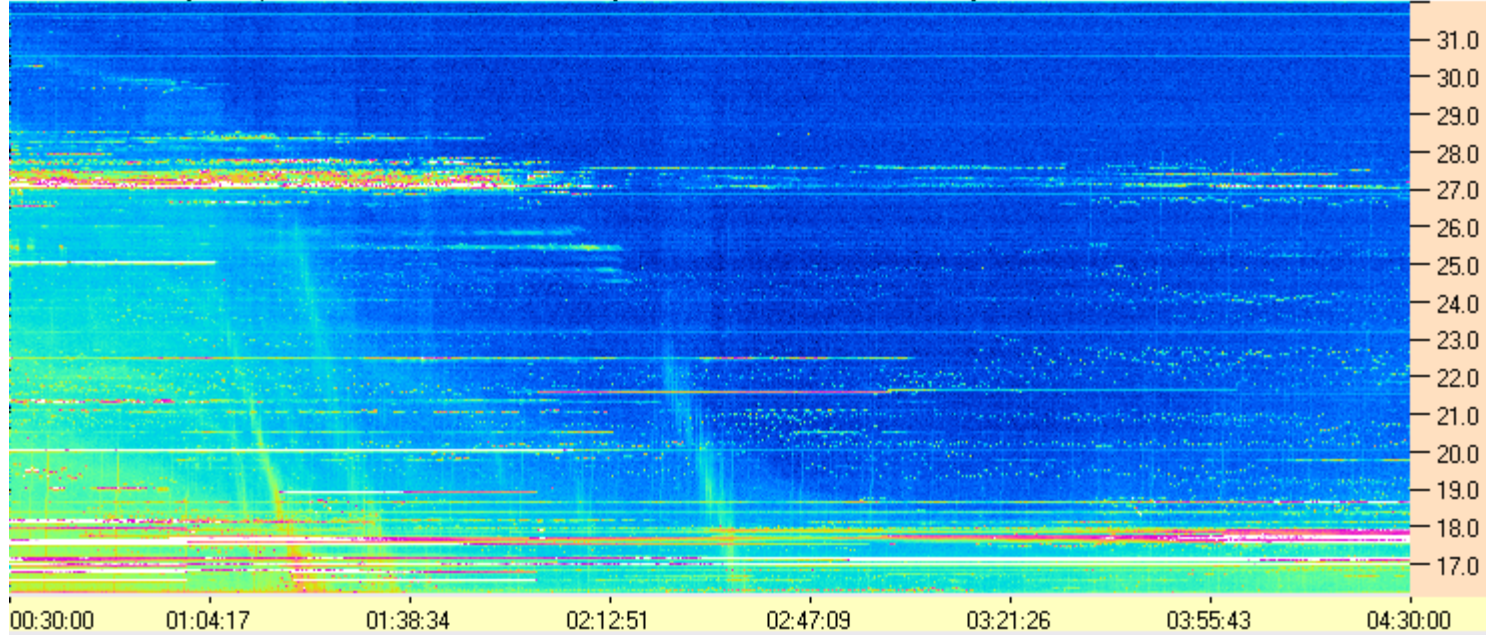
Dave

AJ4CO Observatory 04 Apr 2015, log entry 397, 398





AJ4CO Observatory - 04 Apr 2015 - DPS 30 kHz IF on TFD Array in CP Mode - RCP Correction Array 2014 12 18 B.csv Offset 2060 Gain 5.0



AJ4CO Observatory - 04 Apr 2015 - DPS 30 kHz IF on TFD Array in CP Mode - LCP Correction Array 2014 12 18 B.csv Offset 2060 Gain 5.0

