

Subject: [radiojove-data] 03 Apr 2015 non-Io-A

From: Dave Typinski <davetyp@typnet.net>

Date: 04/06/2015 01:47

To: RadioJove-Data <radiojove-data@lists.nasa.gov>

Adding to Tom & David & Jim's nice reports, here's some non-Io-A from Friday morning.

Barely a fact, very weak.

RCP dominant L bursting 0415-0440 UTC from 16 to 24 MHz, vertex late arcs, no modulation lanes visible.

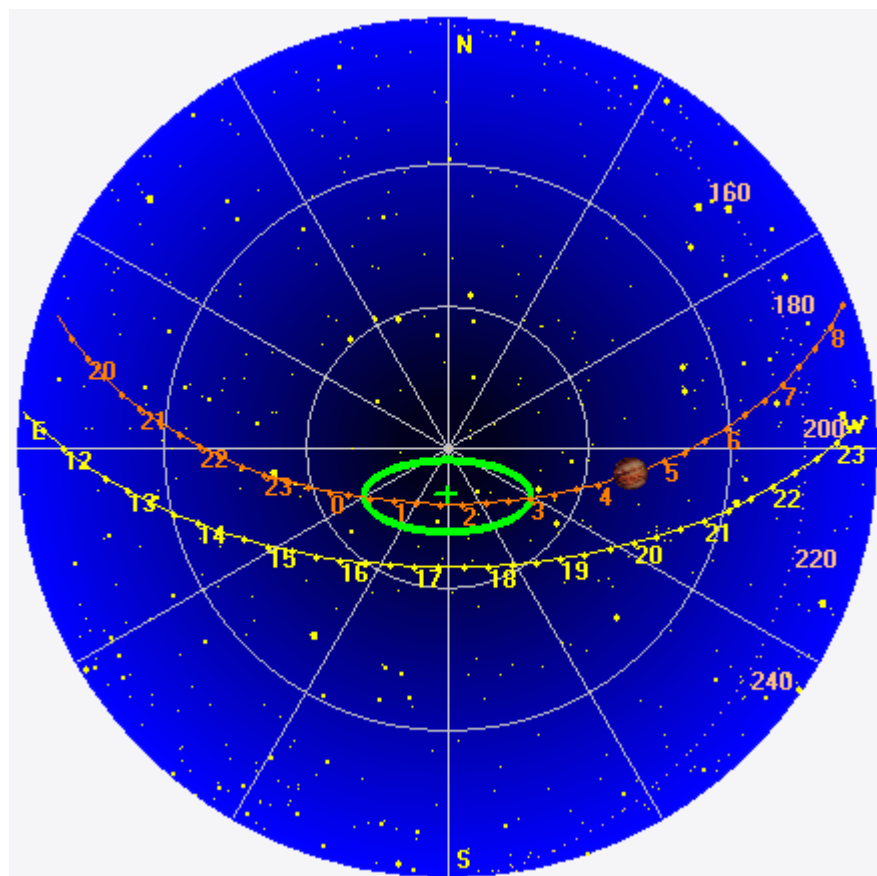
Jupiter was $+35^\circ$ to $+41^\circ$ off axis.

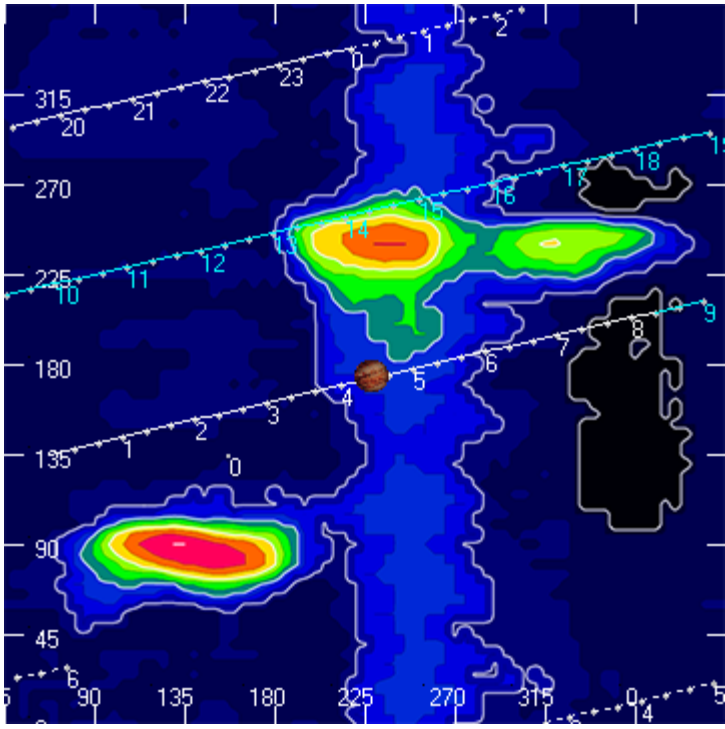
Jupiter was trailing the Sun by 120° .

--

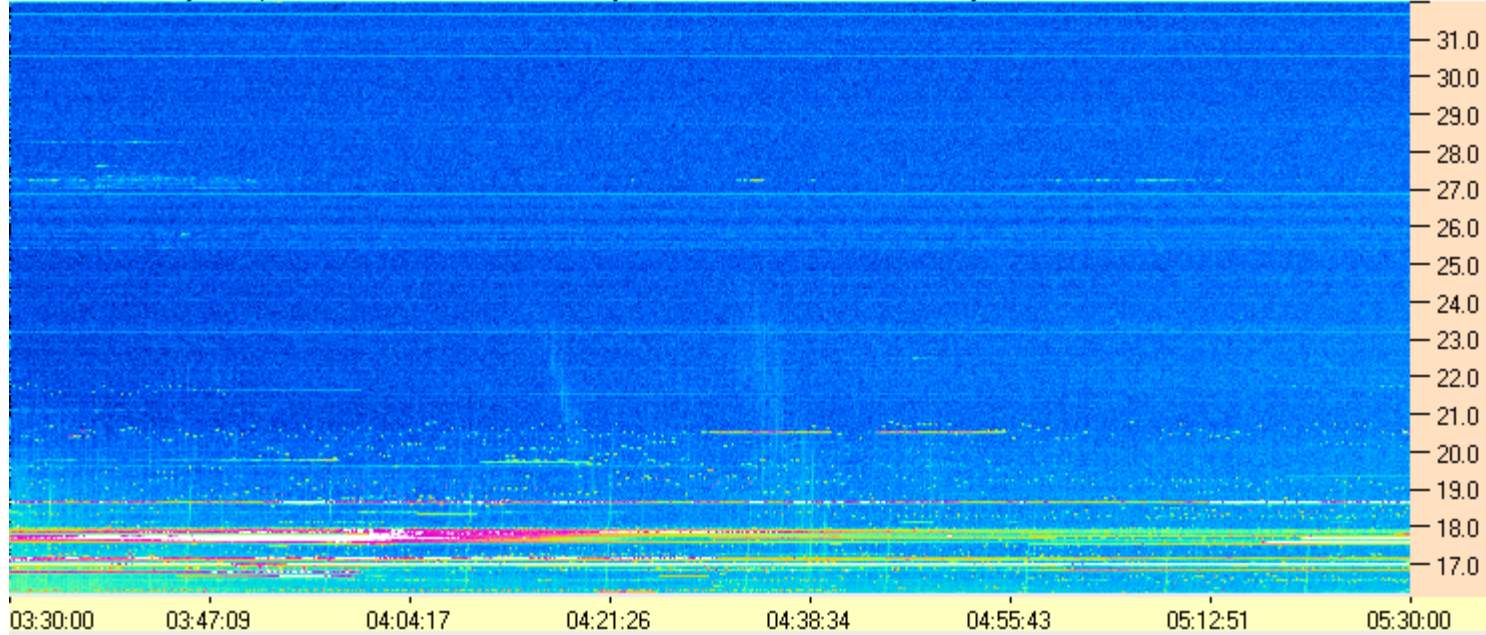
Dave

AJ4CO Observatory 03 Apr 2015, log entry 396





AJ4CO Observatory - 03 Apr 2015 - DPS 30 kHz IF on TFD Array in CP Mode - RCP Correction Array 2014 12 18 B.csv Offset 2050 Gain 5.0



AJ4CO Observatory - 03 Apr 2015 - DPS 30 kHz IF on TFD Array in CP Mode - LCP Correction Array 2014 12 18 B.csv Offset 2050 Gain 5.0

