

**Subject:** [radiojove-data] 29 Mar 2015 non-Io-B

**From:** Dave Typinski <davetyp@typnet.net>

**Date:** 03/31/2015 22:19

**To:** RadioJove-Data <radiojove-data@lists.nasa.gov>

Here's some non-Io-B from Sunday morning.

RCP dominant L bursting 0153-0337 UTC from 16 to 30 MHz, vertex early arcs, no modulation lanes visible.

A little deep in the band noise for the strip chart, but easily visible in the spectrogram.

Jupiter was  $-4^\circ$  to  $+21^\circ$  off axis.

Jupiter was trailing the Sun by  $125^\circ$ .

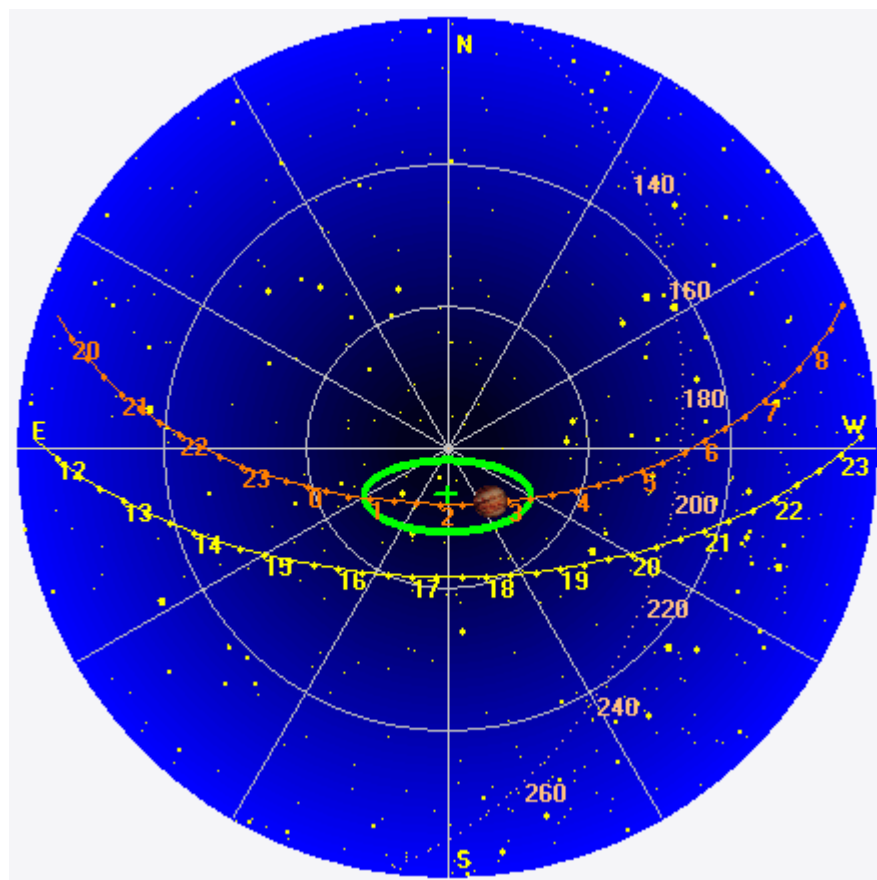
--

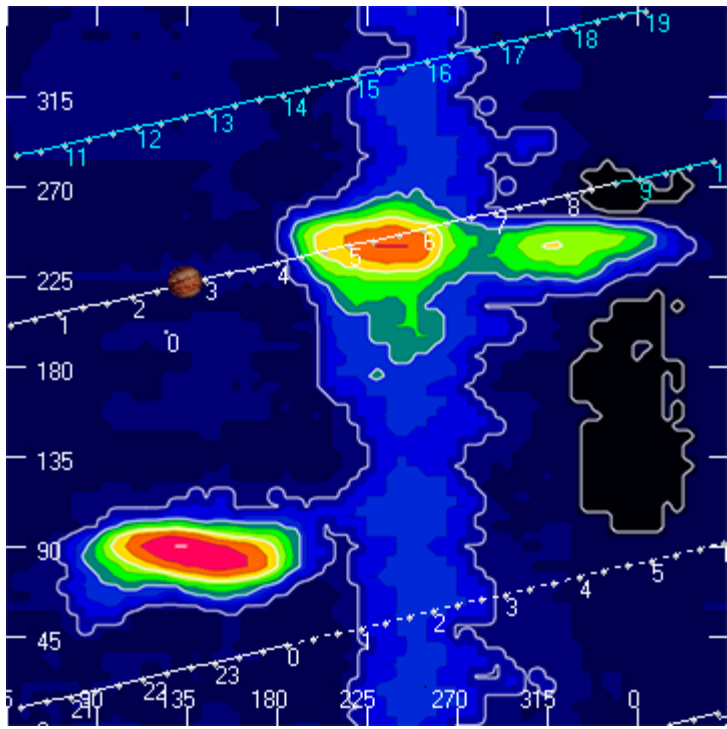
Dave

---

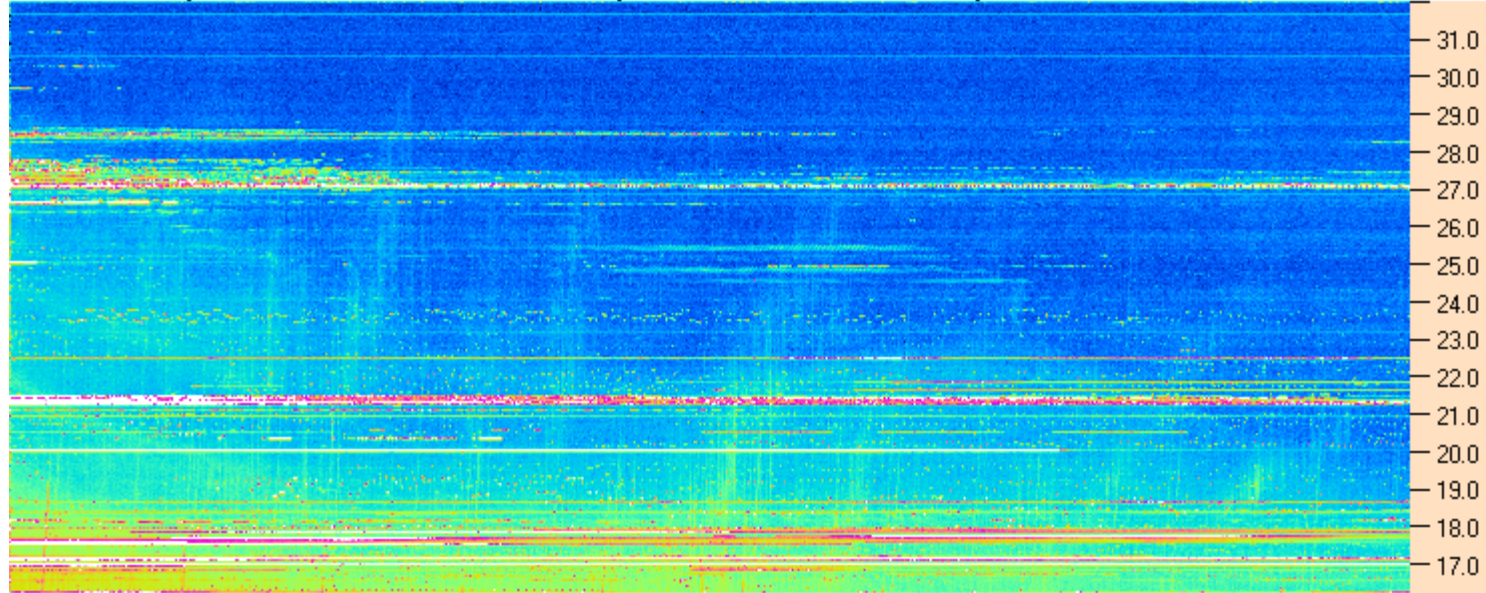
**AJ4CO Observatory 29 Mar 2015, log entry 391**

---



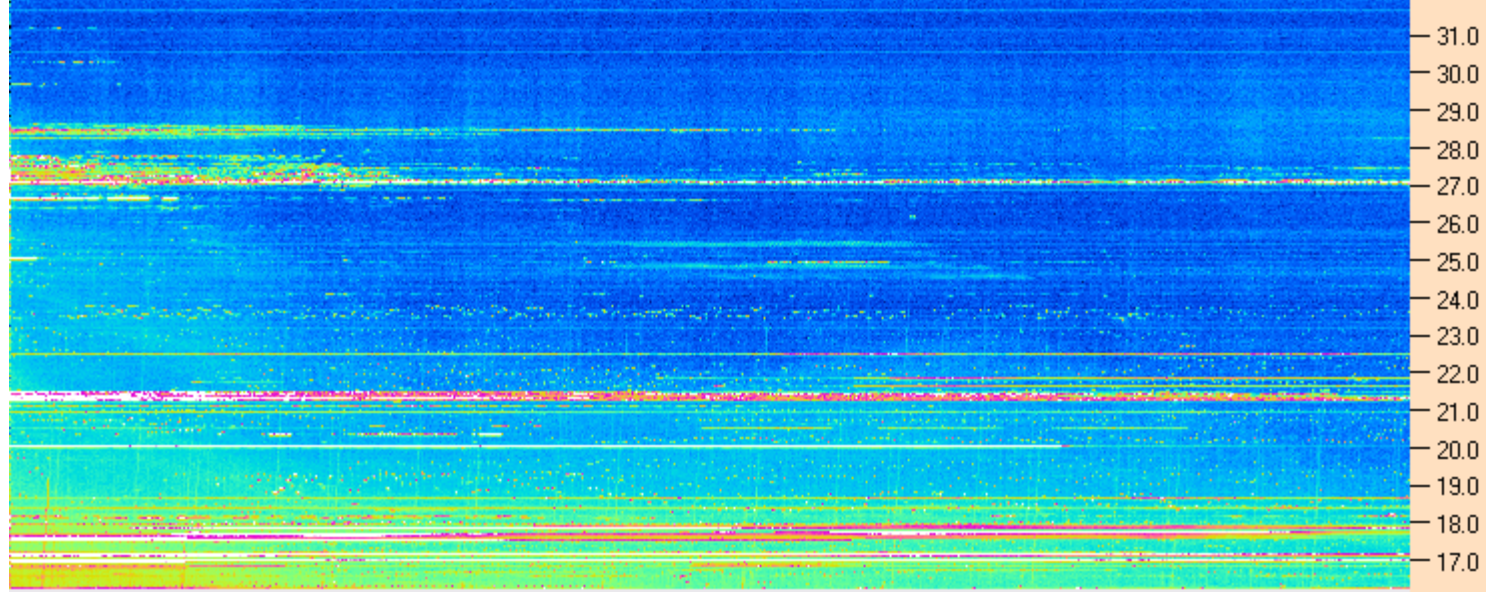


AJ4CO Observatory - 29 Mar 2015 - DPS 30 kHz IF on TFD Array in CP Mode - RCP Correction Array 2014 12 18 B.csv Offset 2050 Gain 5.0



01:45:00 02:02:09 02:19:17 02:36:26 02:53:34 03:10:43 03:27:52 03:45:00

AJ4CO Observatory - 29 Mar 2015 - DPS 30 kHz IF on TFD Array in CP Mode - LCP Correction Array 2014 12 18 B.csv Offset 2050 Gain 5.0



03/29/2015 by AJ4CO RSP in High Springs, FL

