

Subject: [radiojove-data] 29 Mar 2015 Io-A

From: Dave Typinski <davetyp@typnet.net>

Date: 03/31/2015 22:20

To: RadioJove-Data <radiojove-data@lists.nasa.gov>

Adding to To & Jim & David's nice reports, here's some Io-A from Sunday morning.

RCP dominant L bursting 0429-0516 UTC from 16 to 25 MHz, vertex late arcs, no modulation lanes visible.

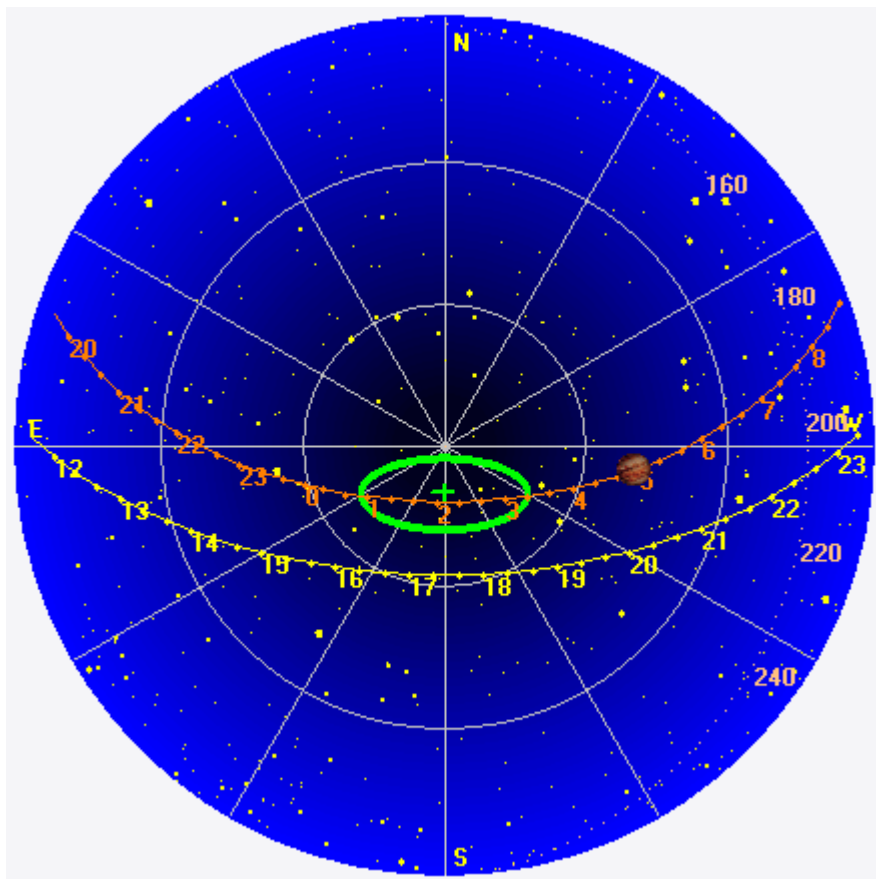
Jupiter was +33° to +45° off axis.

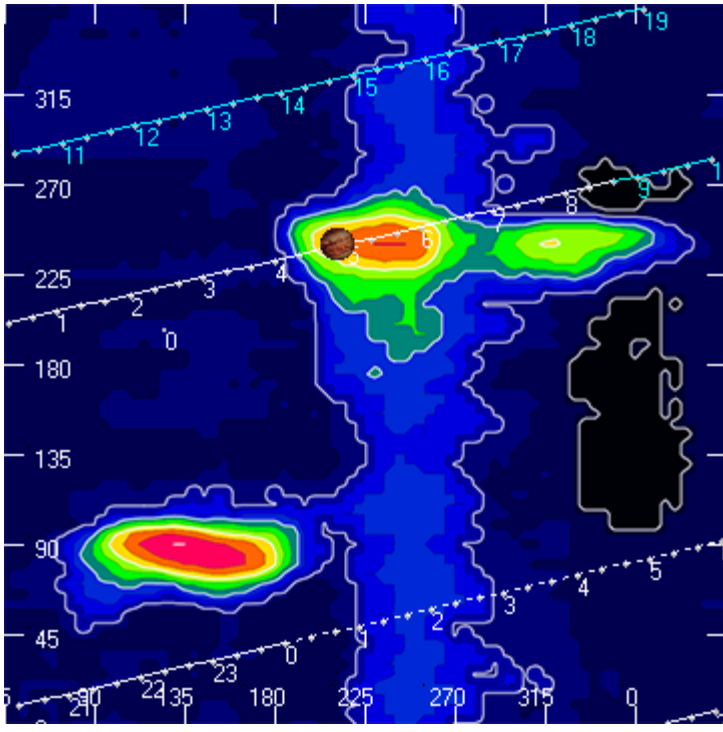
Jupiter was trailing the Sun by 125°.

--

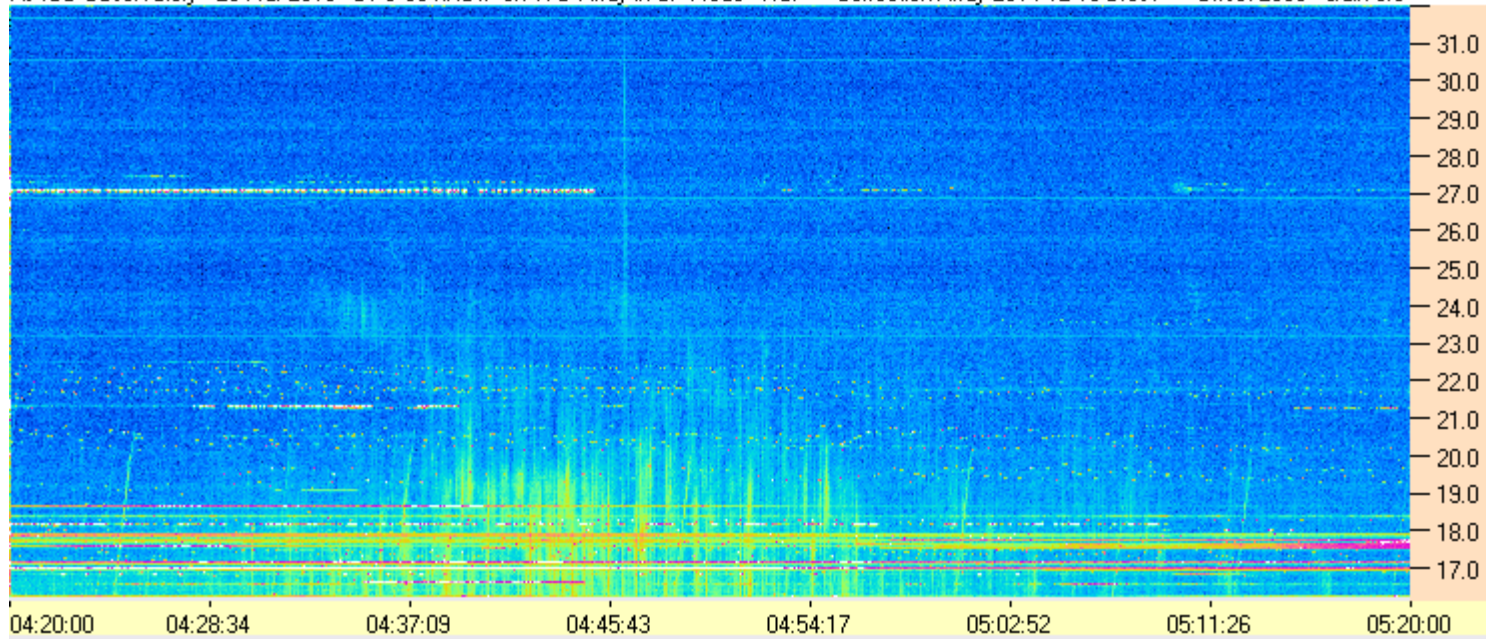
Dave

AJ4CO Observatory 29 Mar 2015, log entry 392





AJ4CO Observatory - 29 Mar 2015 - DPS 30 kHz IF on TFD Array in CP Mode - RCP Correction Array 2014 12 18 B.csv Offset 2050 Gain 5.0



AJ4CO Observatory - 29 Mar 2015 - DPS 30 kHz IF on TFD Array in CP Mode - LCP Correction Array 2014 12 18 B.csv Offset 2050 Gain 5.0

