

**Subject:** [radiojove-data] 23 Mar 2015 non-Io-A

**From:** Dave Typinski <davetyp@typnet.net>

**Date:** 03/25/2015 00:59

**To:** RadioJove-Data <radiojove-data@lists.nasa.gov>

Here's some non-Io-A from Monday morning.

RCP dominant L bursting 0051-0120 UTC from 16 to 25 MHz, vertex late arc, no modulation lanes visible.

Power line noise present throughout.

Jupiter was  $-24^\circ$  to  $-17^\circ$  off axis.

Jupiter was trailing the Sun by  $131^\circ$ .

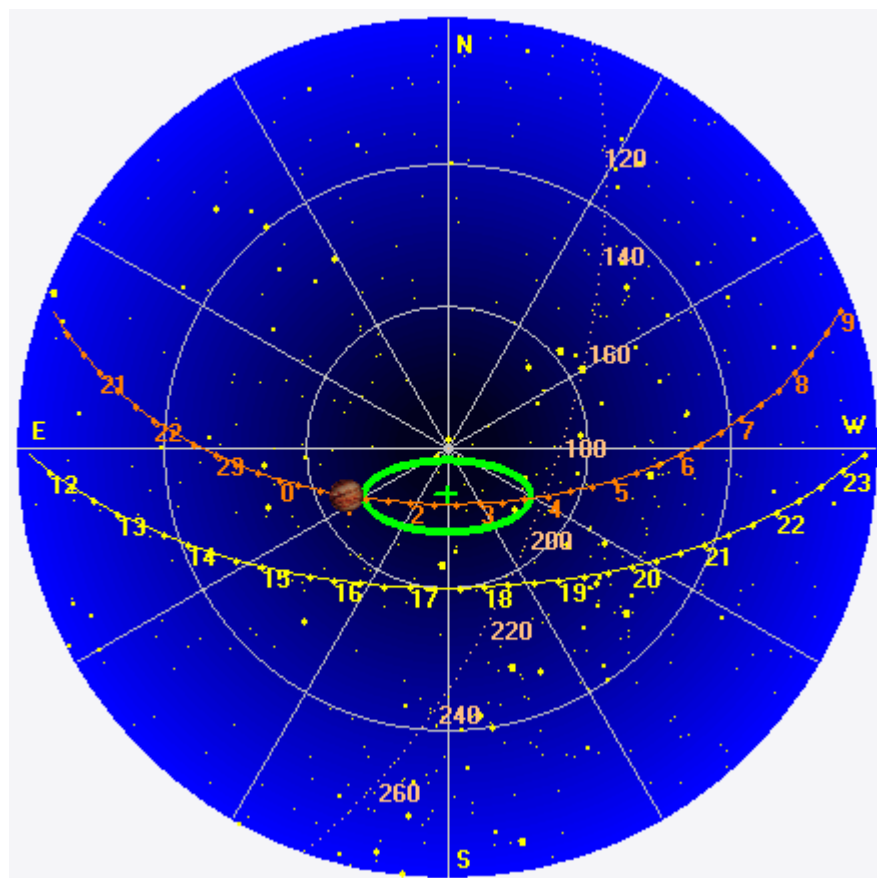
--

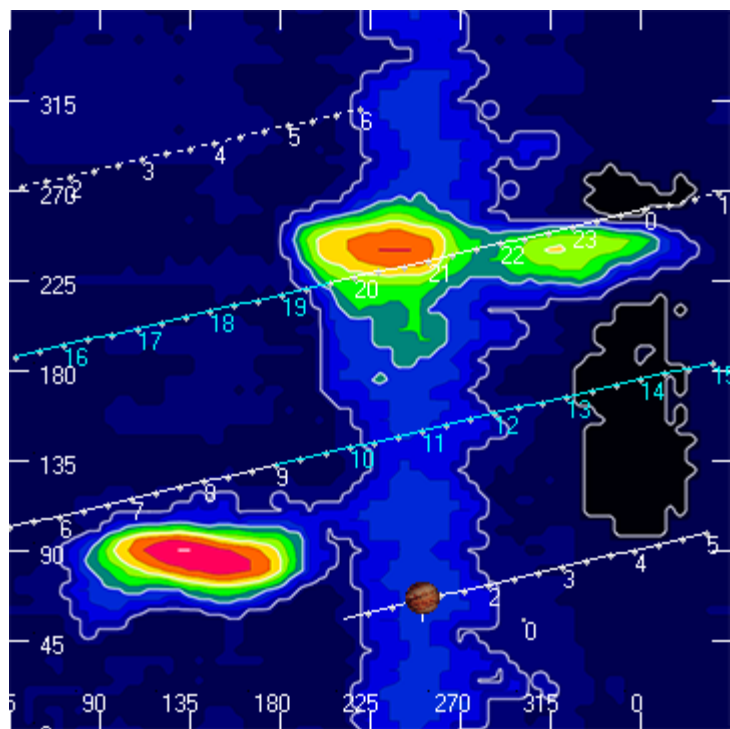
Dave

---

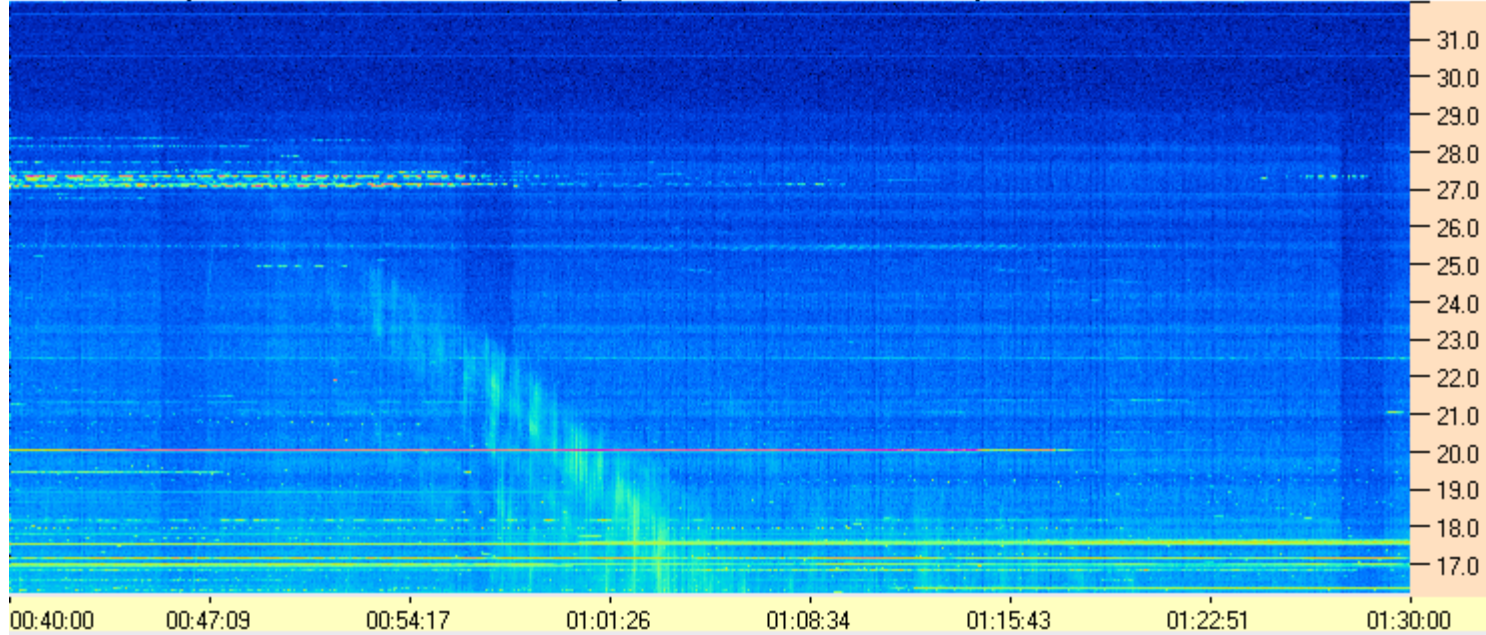
**AJ4CO Observatory 23 Mar 2015, log entry 388**

---





AJ4CO Observatory - 23 Mar 2015 - DPS 30 kHz IF on TFD Array in CP Mode - RCP Correction Array 2014 12 18B.csv Offset 2050 Gain 2.0



AJ4CO Observatory - 23 Mar 2015 - DPS 30 kHz IF on TFD Array in CP Mode - LCP Correction Array 2014 12 18B.csv Offset 2050 Gain 2.0

