

Subject: [radiojove-data] 22 Mar 2015 non-Io-B / Io-A
From: Dave Typinski <davetyp@typnet.net>
Date: 03/24/2015 00:57
To: RadioJove-Data <radiojove-data@lists.nasa.gov>

Adding to David & Jim & Wes's nice reports, here's some non-Io-B and Io-A Sunday morning.

RCP dominant non-Io-B L bursting 0215-0248 UTC from 16 to 22 MHz, vertex early arcs, no modulation lanes visible.

RCP dominant Io-A L bursting 0308-0500 UTC from 16 to 25 MHz, vertex late arc, no modulation lanes visible.

Power line noise present throughout.

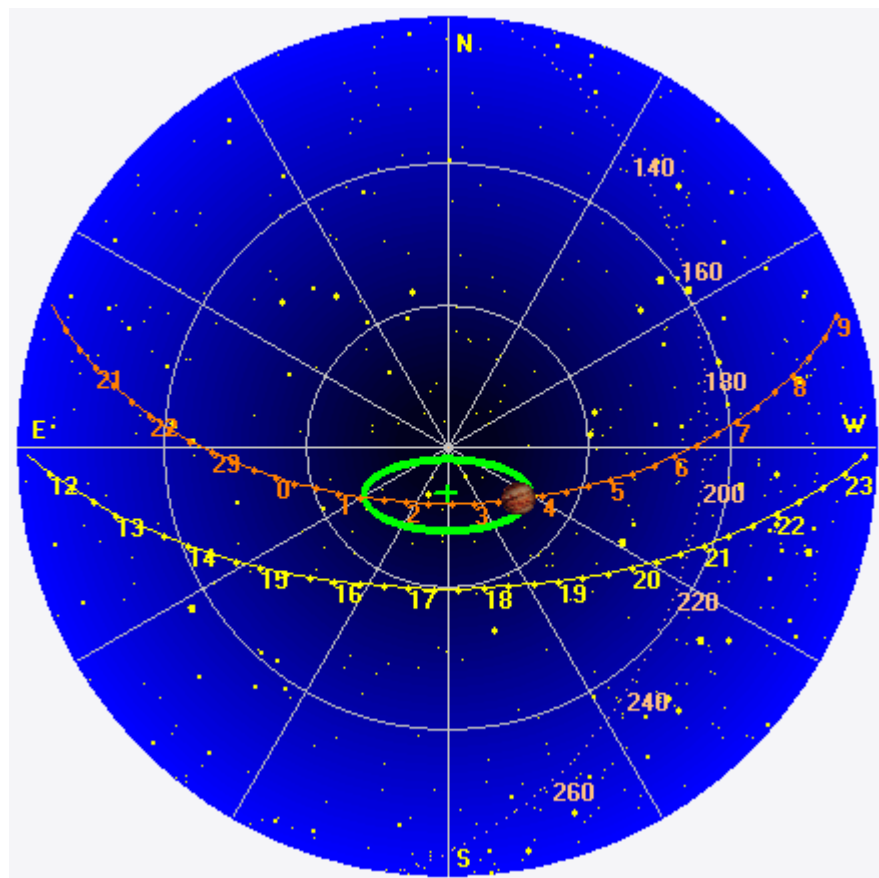
Jupiter was -6° to $+34^\circ$ off axis.

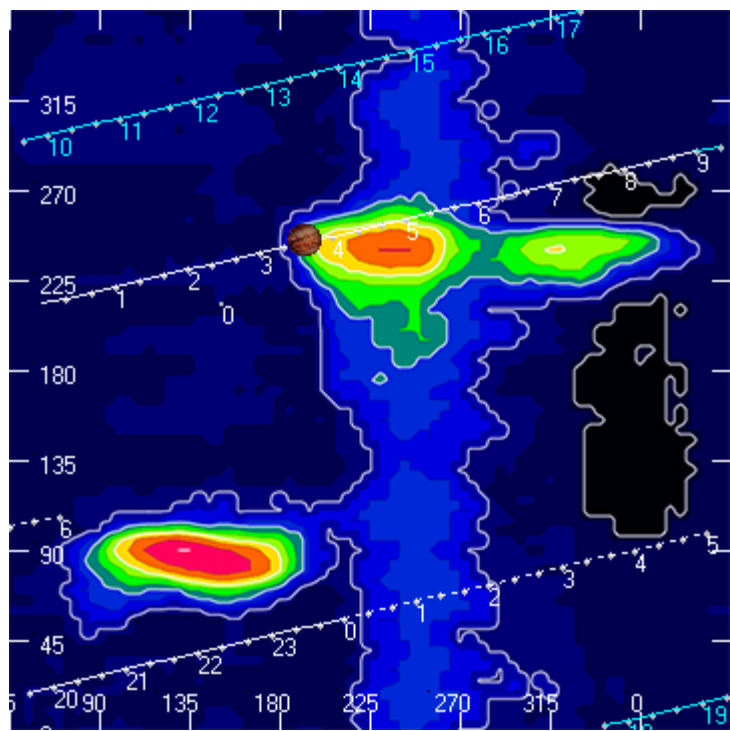
Jupiter was trailing the Sun by 132° .

--

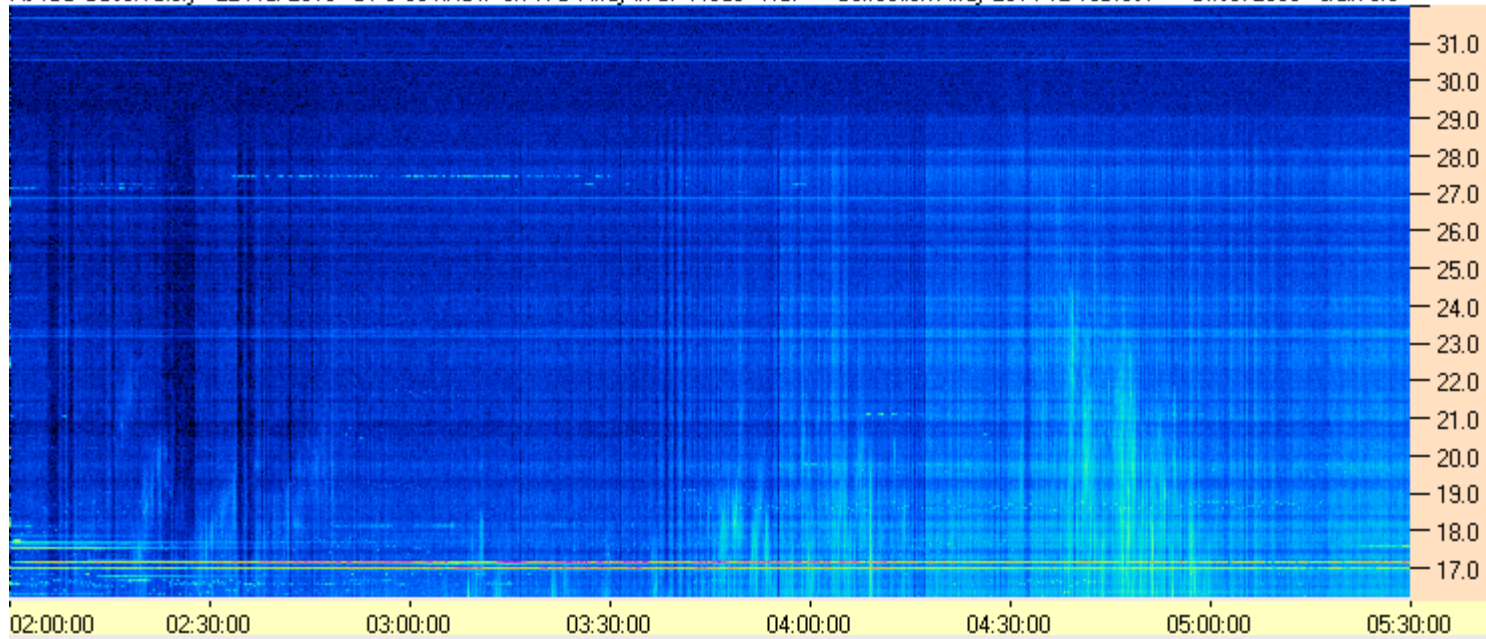
Dave

AJ4CO Observatory 22 Mar 2015, log entry 386, 387

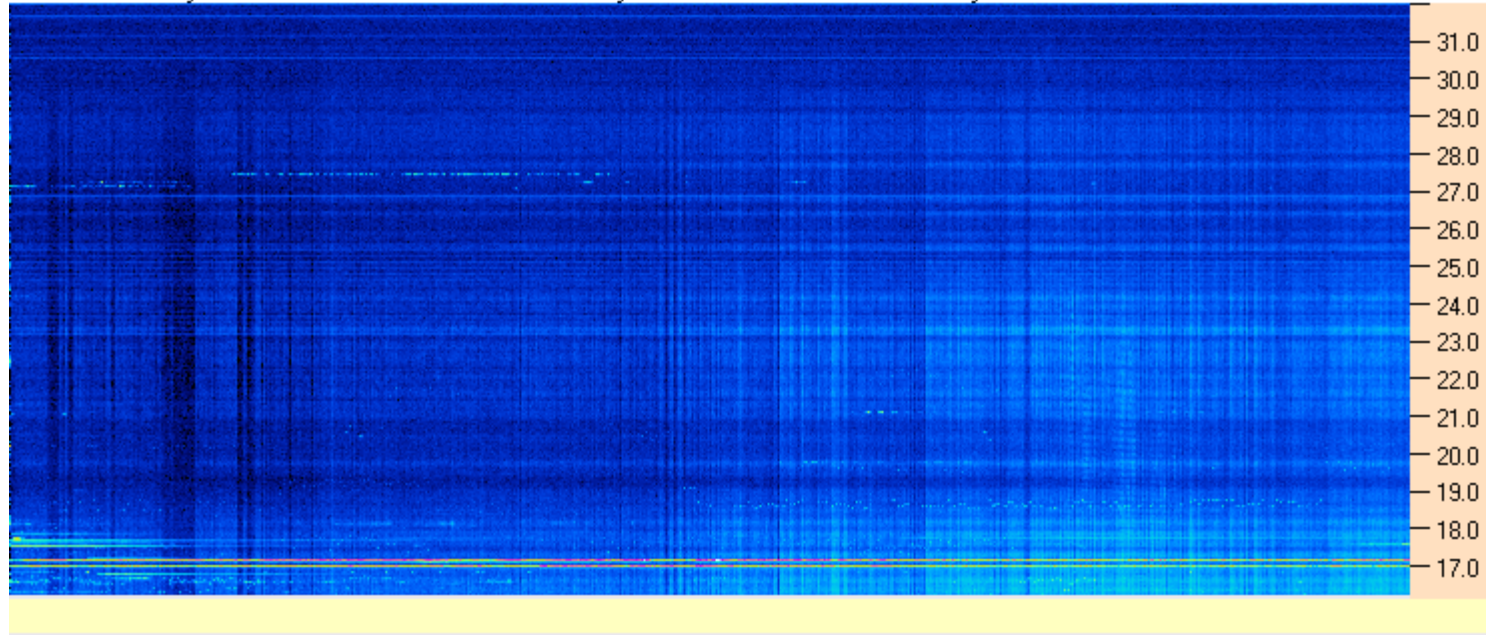




AJ4CO Observatory - 22 Mar 2015 - DPS 30 kHz IF on TFD Array in CP Mode - RCP Correction Array 2014 12 18B.csv Offset 2050 Gain 3.0



AJ4CO Observatory - 22 Mar 2015 - DPS 30 kHz IF on TFD Array in CP Mode - LCP Correction Array 2014 12 18B.csv Offset 2050 Gain 3.0



03/22/2015 by AJ4CO RSP in High Springs, FL

