

Subject: [radiojove-data] 20 Mar 2015 Io-A/C

From: Dave Typinski <davetyp@typnet.net>

Date: 03/23/2015 00:07

To: RadioJove-Data <radiojove-data@lists.nasa.gov>

Adding to Tom & Jim & David & Wes's nice reports, here's some Io-A & non-Io-C from Friday morning.

RCP dominant Io-A L bursting 0213-0503 UTC from 16 to 28 MHz, wobbly vertex late arc, no modulation lanes visible.

LCP dominant Io-C L bursting and N event 0509-0550 UTC from 16 to 19 MHz, vertex late arc, no modulation lanes visible.

Power line noise present throughout.

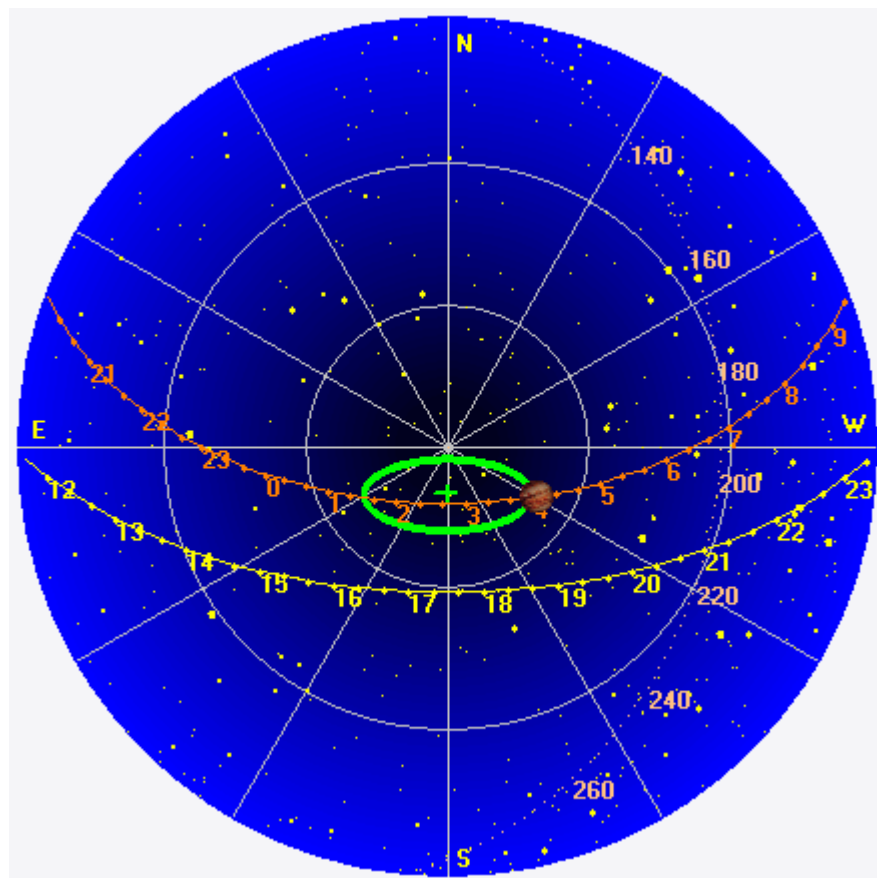
Jupiter was -8° to $+45^\circ$ off axis.

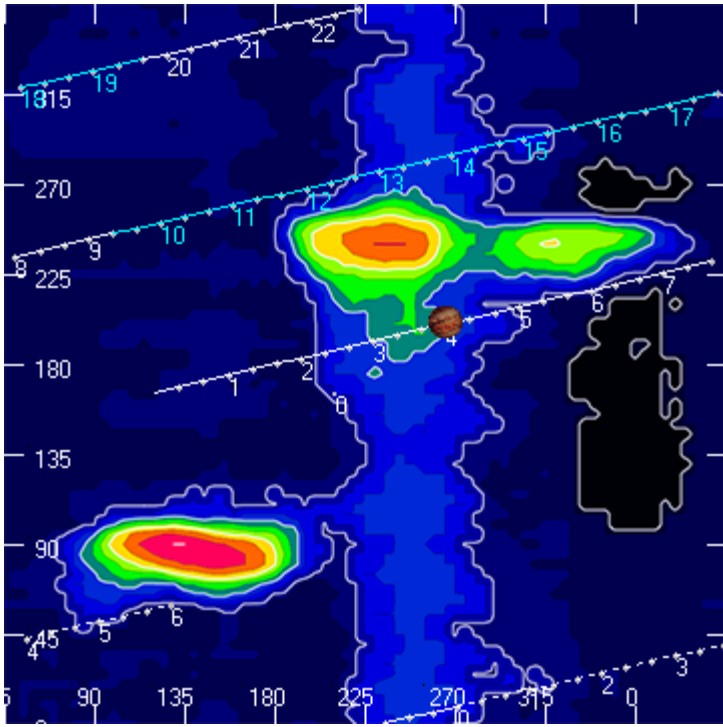
Jupiter was trailing the Sun by 134° .

--

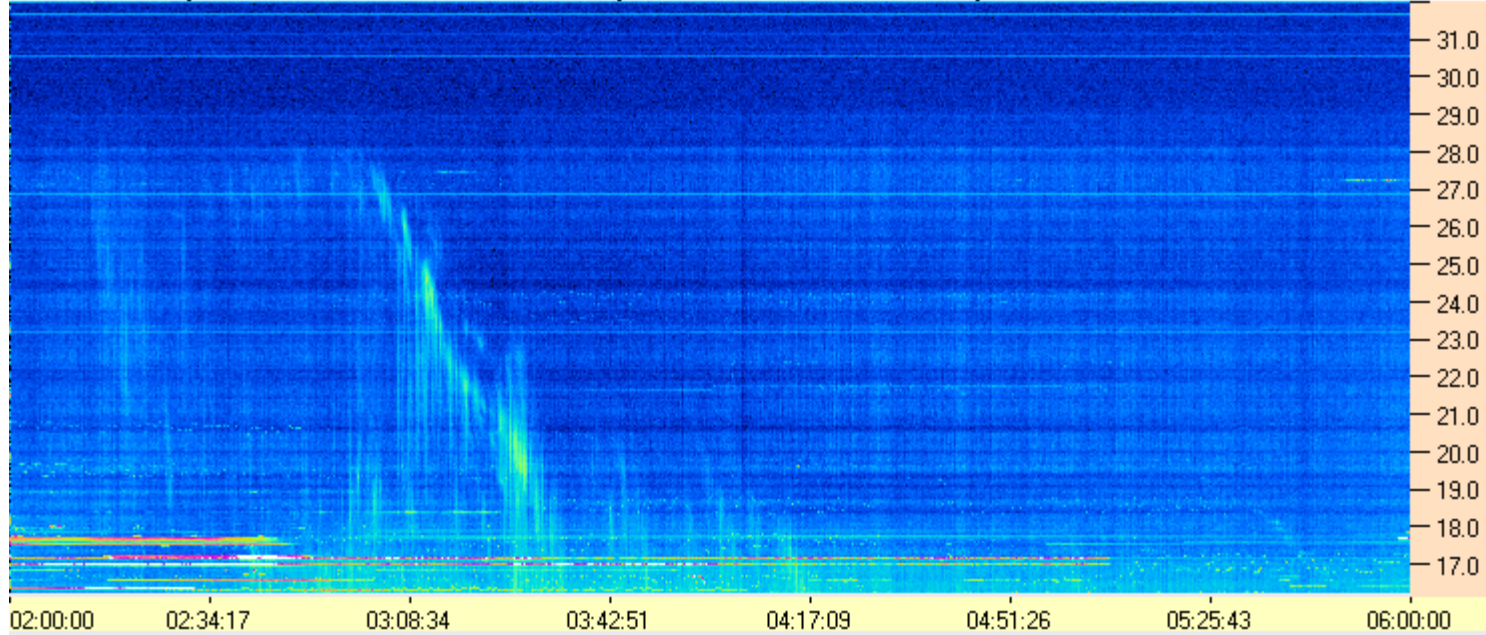
Dave

AJ4CO Observatory 20 Mar 2015, log entry 384, 385

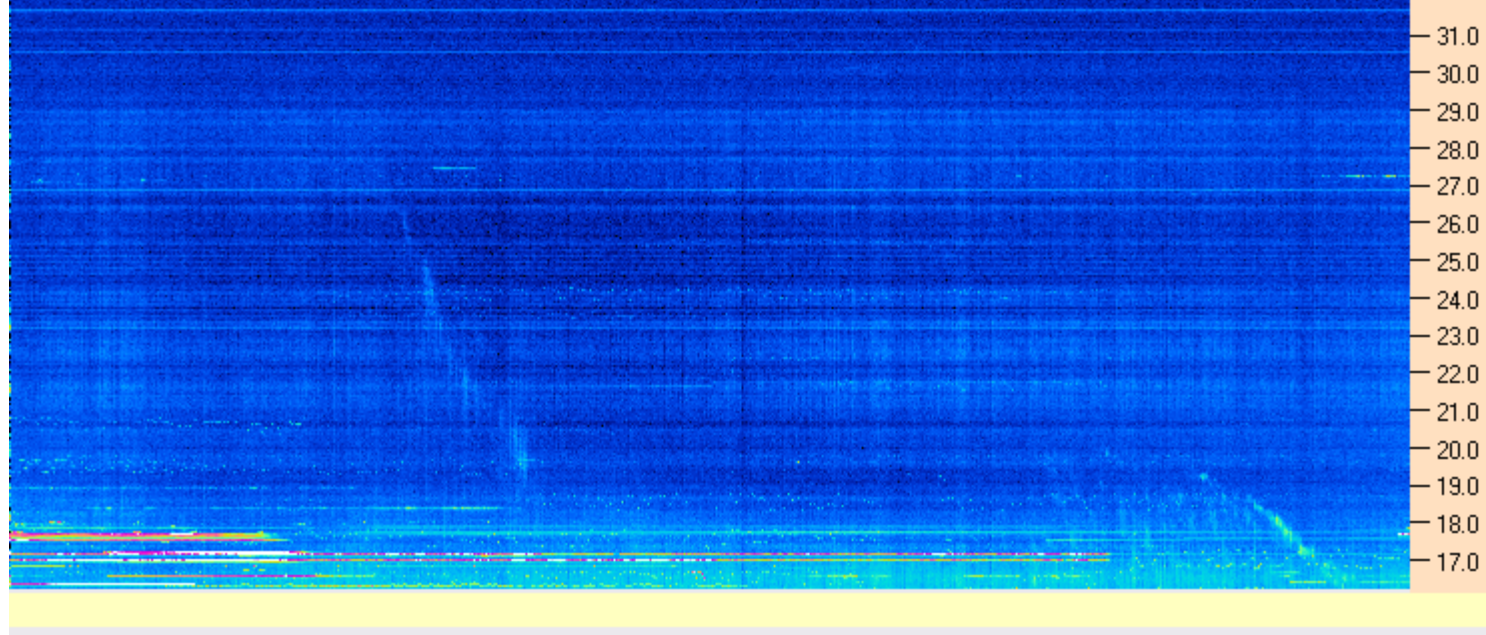




AJ4CO Observatory - 20 Mar 2015 - DPS 30 kHz IF on TFD Array in CP Mode - RCP Correction Array 2014 12 18B.csv Offset 2050 Gain 5.0



AJ4CO Observatory - 20 Mar 2015 - DPS 30 kHz IF on TFD Array in CP Mode - LCP Correction Array 2014 12 18B.csv Offset 2050 Gain 5.0



03/20/2015 by AJ4CO RSP in High Springs, FL

