

Subject: [radiojove-data] 18 Mar 2015 non-Io-A/C

From: Dave Typinski <davetyp@typnet.net>

Date: 03/19/2015 23:14

To: RadioJove-Data <radiojove-data@lists.nasa.gov>

Adding to Jim's & Wes's nice reports, here's some non-Io-A & non-Io-C from Wednesday morning.

LCP dominant non-Io-A L bursting 0139-0341 UTC from 16 to 21 MHz, poorly organized envelope, no modulation lanes visible.

RCP dominant non-Io-C L bursting 0401-0417 UTC from 16 to 18 MHz, negative envelope drift, no modulation lanes visible.

Power line noise present throughout.

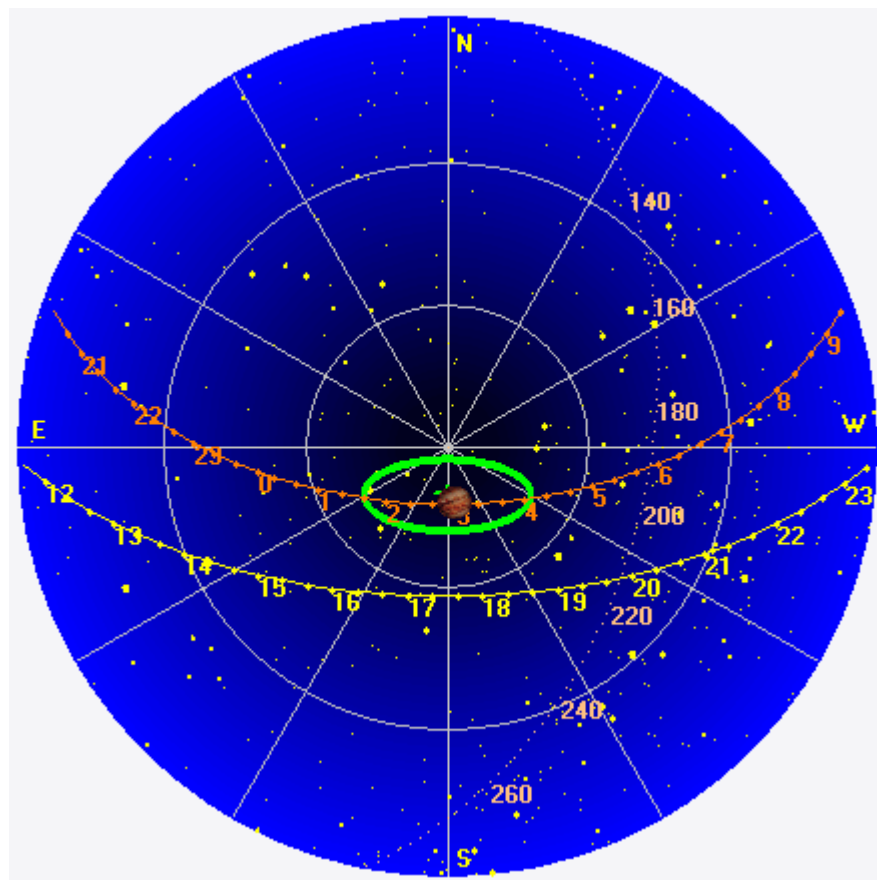
Jupiter was -18° to $+20^\circ$ off axis.

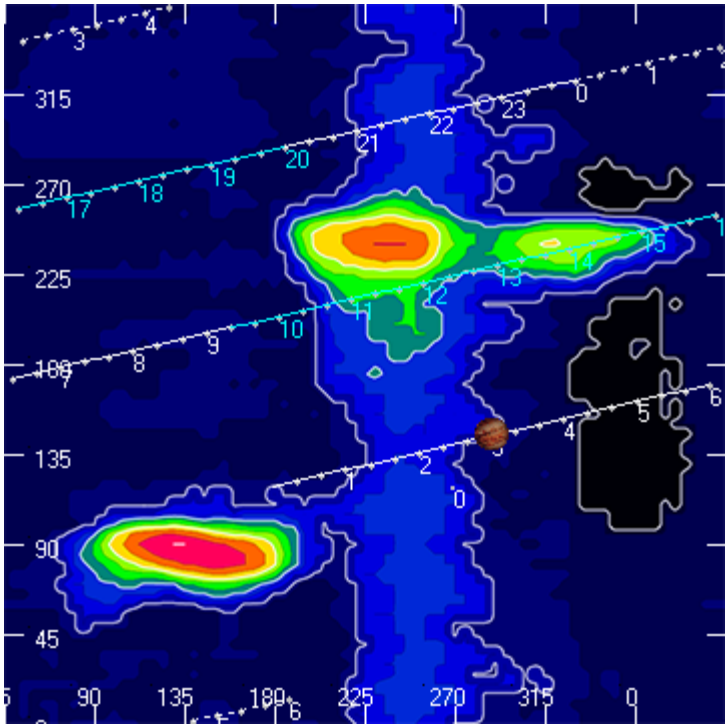
Jupiter was trailing the Sun by 136° .

--

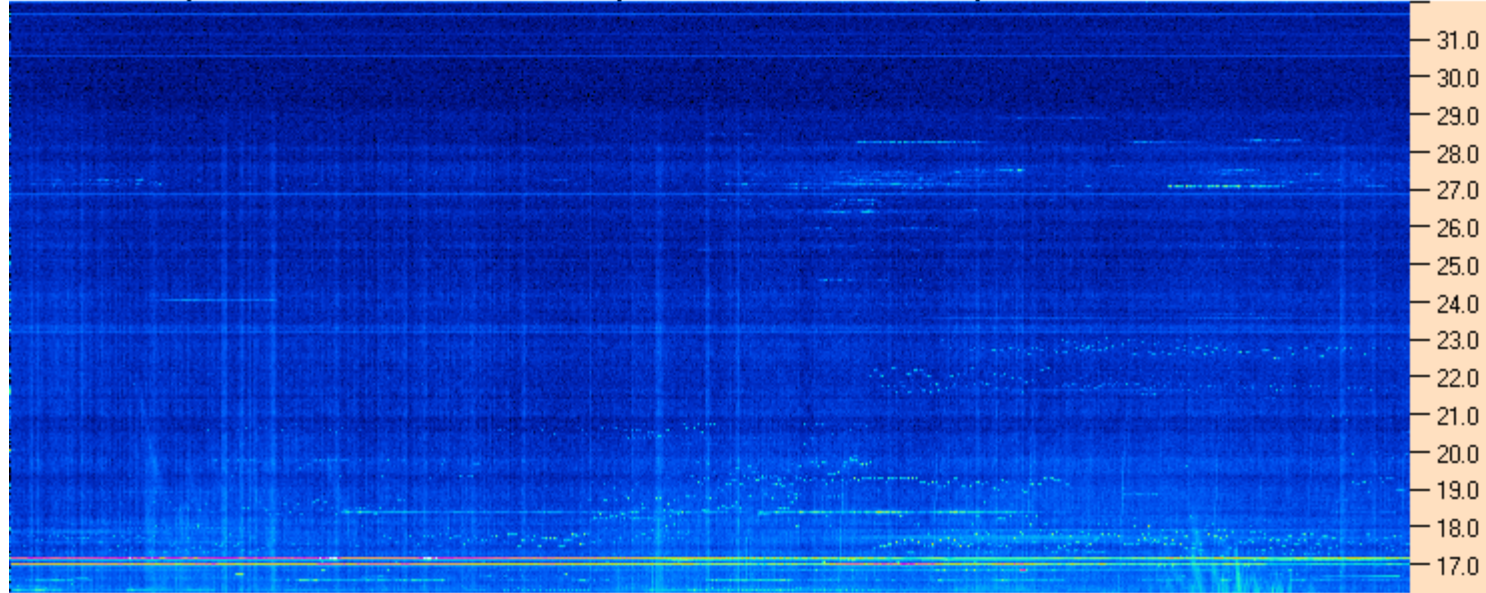
Dave

AJ4CO Observatory 18 Mar 2015, log entry 382, 383



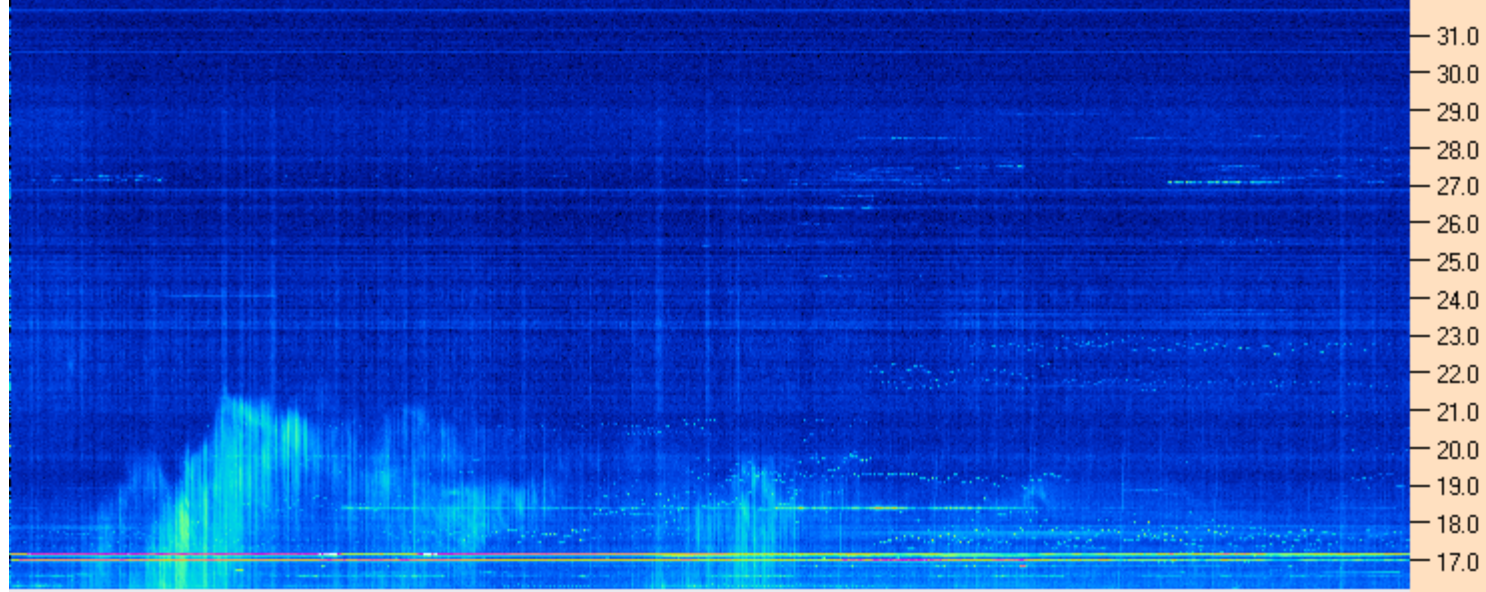


AJ4CO Observatory - 18 Mar 2015 - DPS 30 kHz IF on TFD Array in CP Mode - RCP Correction Array 2014 12 18B.csv Offset 2050 Gain 2.5



01:30:00 01:55:43 02:21:26 02:47:09 03:12:51 03:38:34 04:04:17 04:30:00

AJ4CO Observatory - 18 Mar 2015 - DPS 30 kHz IF on TFD Array in CP Mode - LCP Correction Array 2014 12 18B.csv Offset 2050 Gain 2.5



03/18/2015 by AJ4CO RSP in High Springs, FL

