

**Subject:** [radiojove-data] 16 Mar 2015 non-Io-A/C

**From:** Dave Typinski <davetyp@typnet.net>

**Date:** 03/17/2015 21:25

**To:** RadioJove-Data <radiojove-data@lists.nasa.gov>

Adding to Jim's nice reports, here's some non-Io-A & non-Io-C from Monday morning.

RCP dominant L bursting 0049-0234 UTC from 16 to 22 MHz, vertex late arcs, no modulation lanes visible.

LCP dominant L bursting 0123-0148 UTC from 16 to 18 MHz, zero envelope drift, no modulation lanes visible.

Power line noise present throughout.

Jupiter was  $-32^\circ$  to  $-7^\circ$  off axis.

Jupiter was trailing the Sun by  $138^\circ$ .

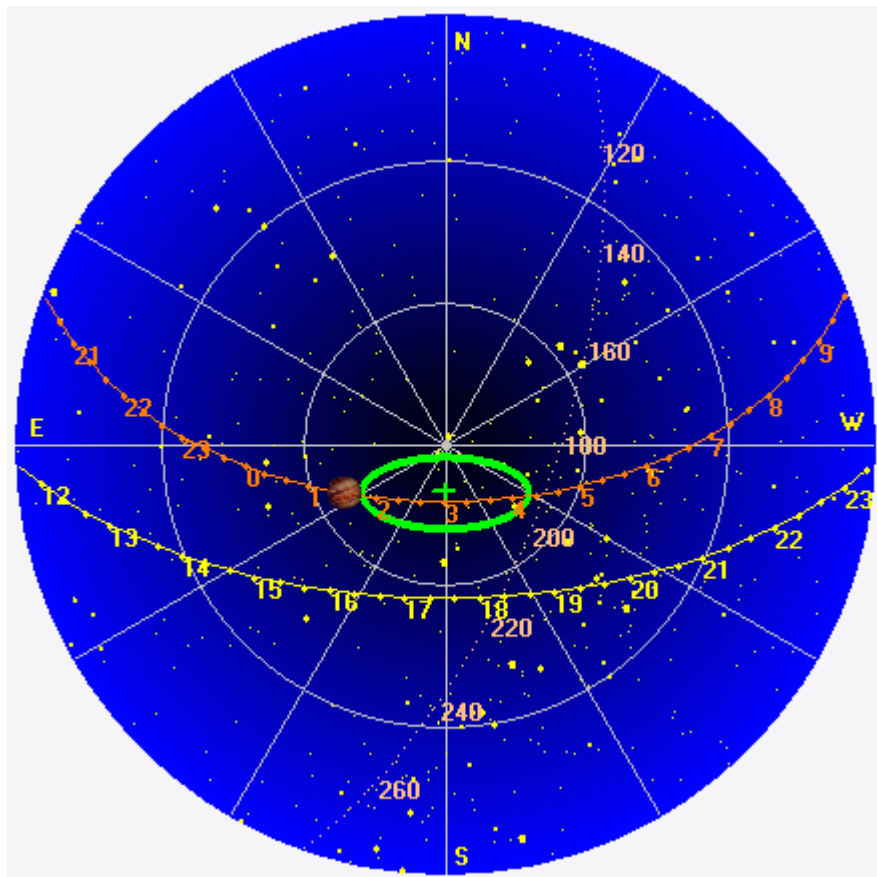
--

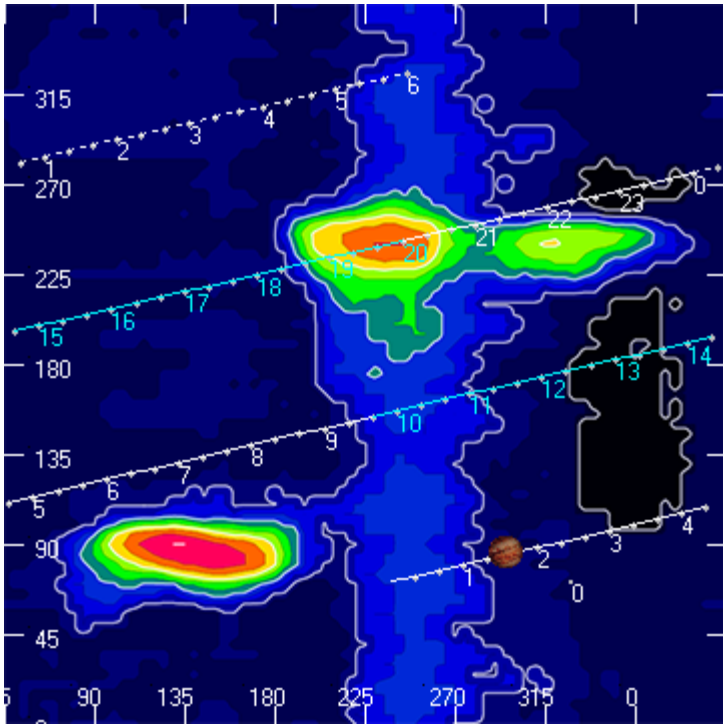
Dave

---

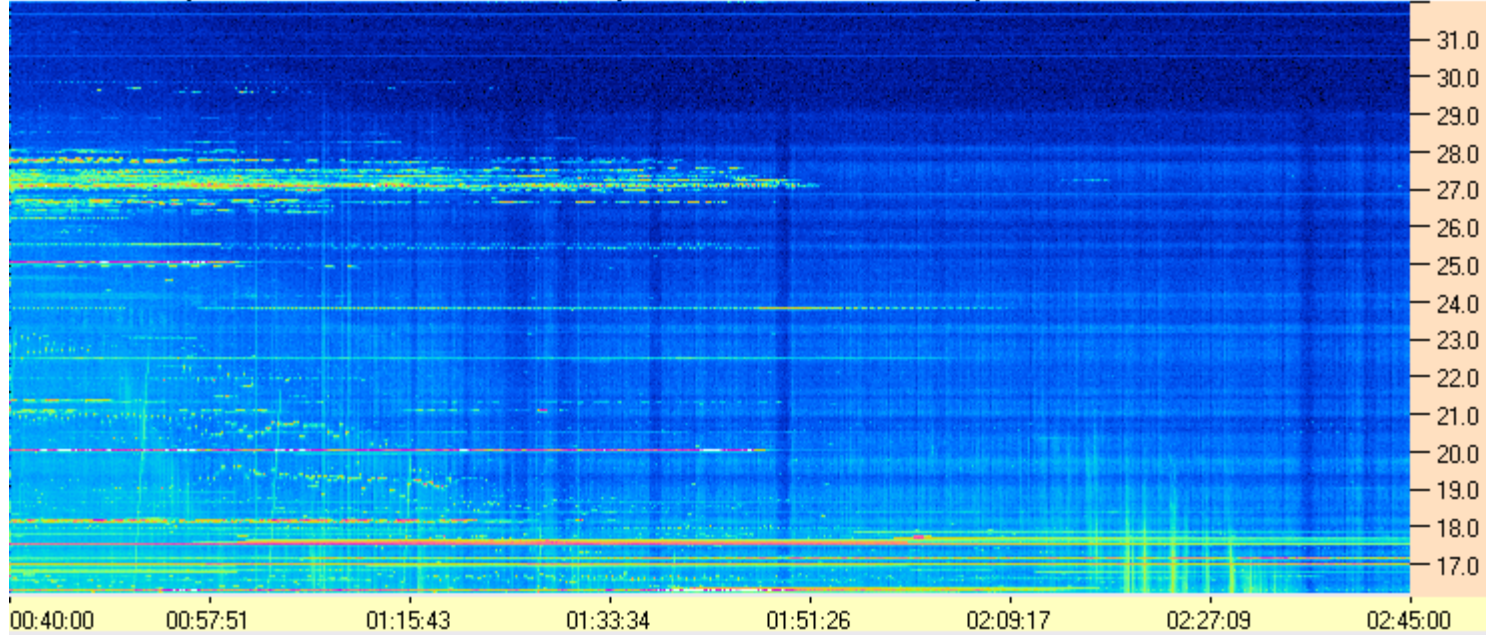
**AJ4CO Observatory 16 Mar 2015, log entry 380, 381**

---





AJ4CO Observatory - 16 Mar 2015 - DPS 30 kHz IF on TFD Array in CP Mode - RCP Correction Array 2014 12 18B.csv Offset 2050 Gain 2.5



AJ4CO Observatory - 16 Mar 2015 - DPS 30 kHz IF on TFD Array in CP Mode - LCP Correction Array 2014 12 18B.csv Offset 2050 Gain 2.5

