

Subject: [radiojove-data] 15 Mar 2015 non-Io-A

From: Dave Typinski <davetyp@typnet.net>

Date: 03/16/2015 23:38

To: RadioJove-Data <radiojove-data@lists.nasa.gov>

Adding to Jim & Tom & David's nice reports, here's some non-Io-A from Sunday morning.

RCP dominant L bursting 0421-0500 UTC from 16 to 26 MHz vertex late arcs, no modulation lanes visible.

Power line noise present throughout.

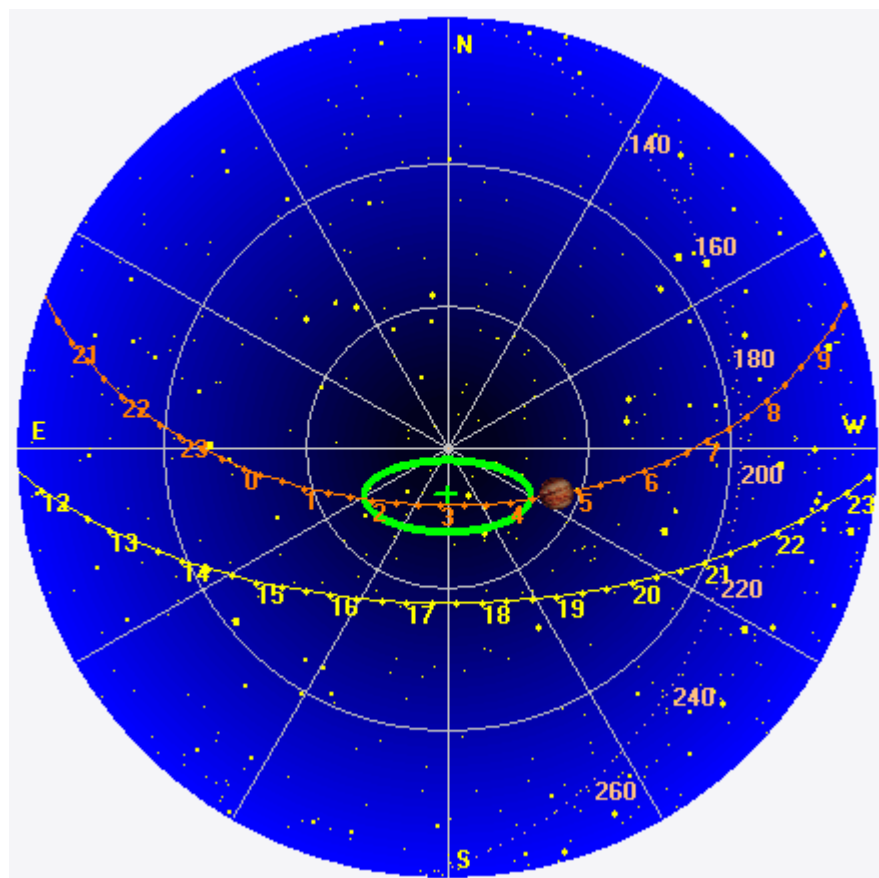
Jupiter was +18° to +28° off axis.

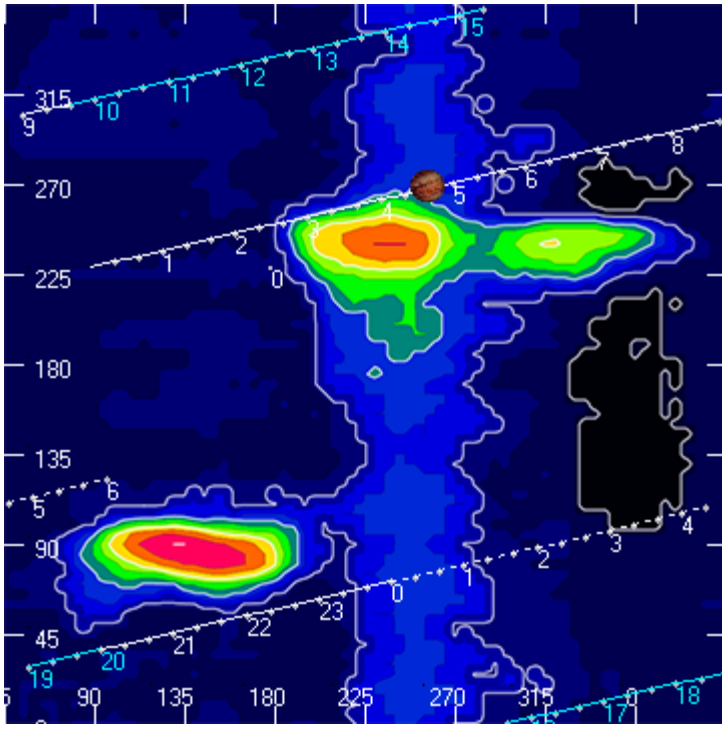
Jupiter was trailing the Sun by 139°.

--

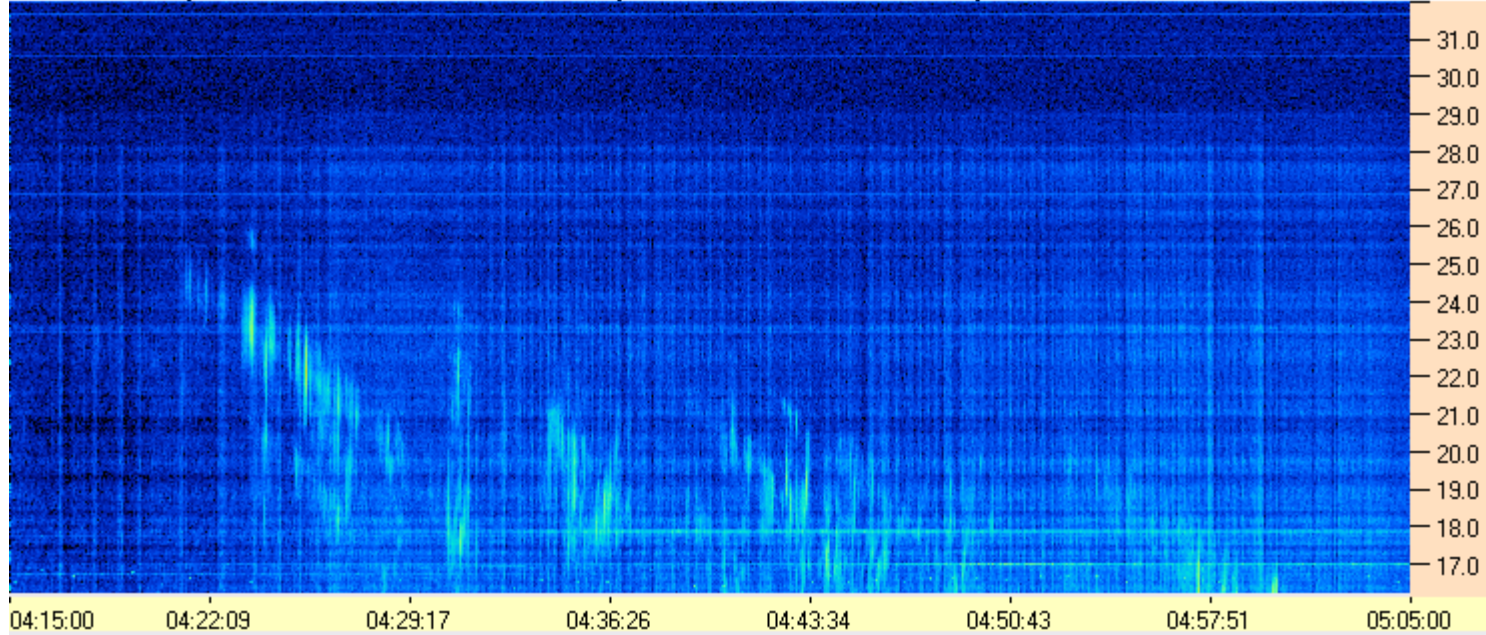
Dave

AJ4CO Observatory 15 Mar 2015, log entry 379

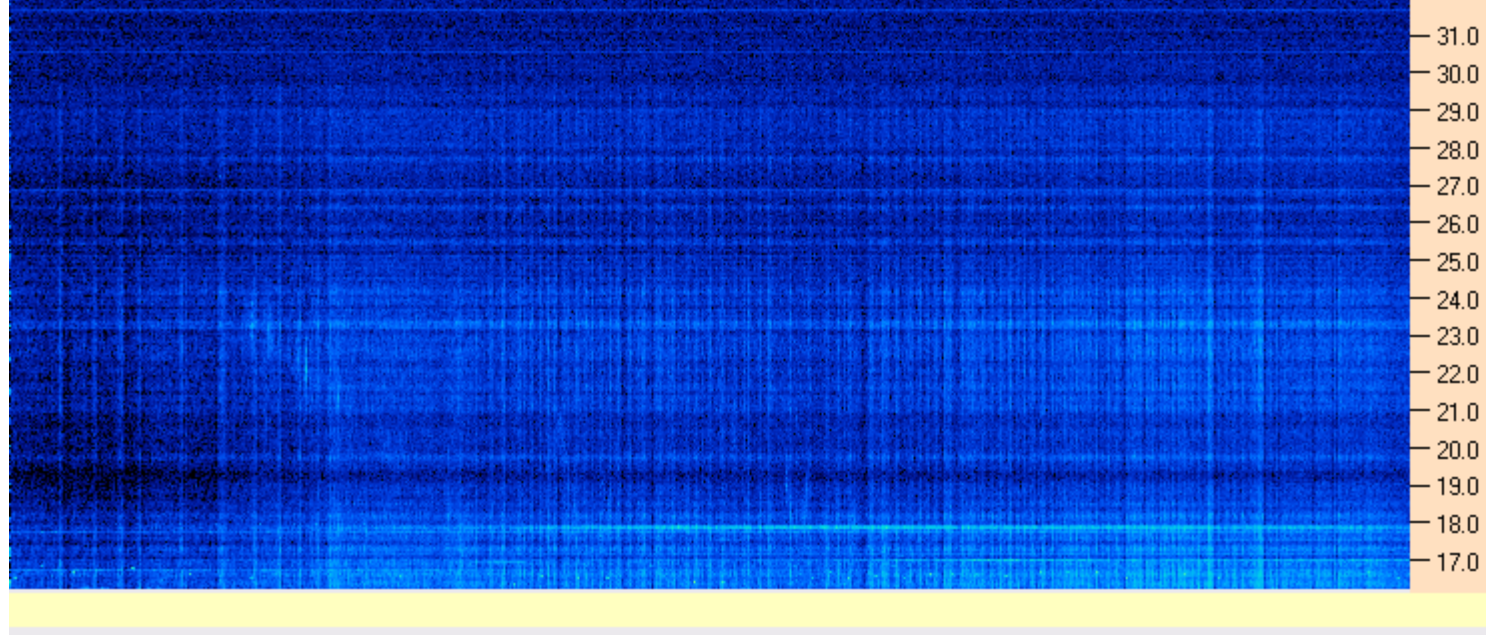




AJ4CO Observatory - 15 Mar 2015 - DPS 30 kHz IF on TFD Array in CP Mode - RCP Correction Array 2014 12 18B.csv Offset 2050 Gain 2.5



AJ4CO Observatory - 15 Mar 2015 - DPS 30 kHz IF on TFD Array in CP Mode - LCP Correction Array 2014 12 18B.csv Offset 2050 Gain 2.5



03/15/2015 by AJ4CO RSP in High Springs, FL

