

Subject: [radiojove-data] 14 Mar 2015 Io-B

From: Dave Typinski <davetyp@typnet.net>

Date: 03/16/2015 23:38

To: RadioJove-Data <radiojove-data@lists.nasa.gov>

Adding to Tom & David's nice reports, here's some Io-B from Saturday morning.

RCP dominant N events and L bursting 0453-0613 UTC from 16 to 23 MHz vertex early arc, no modulation lanes visible.

Power line noise present throughout.

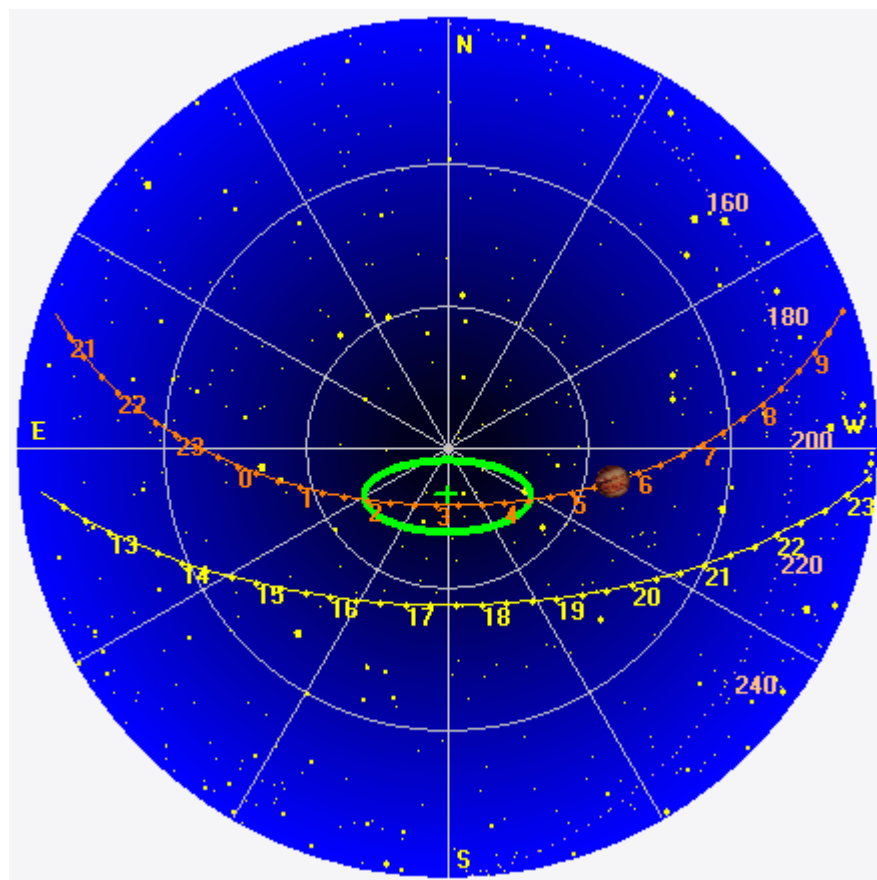
Jupiter was +25° to +44° off axis.

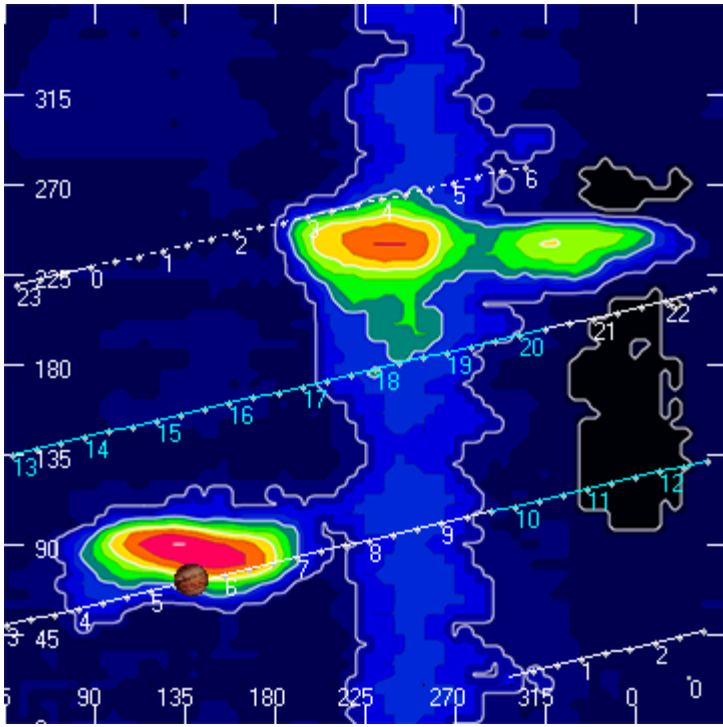
Jupiter was trailing the Sun by 140°.

--

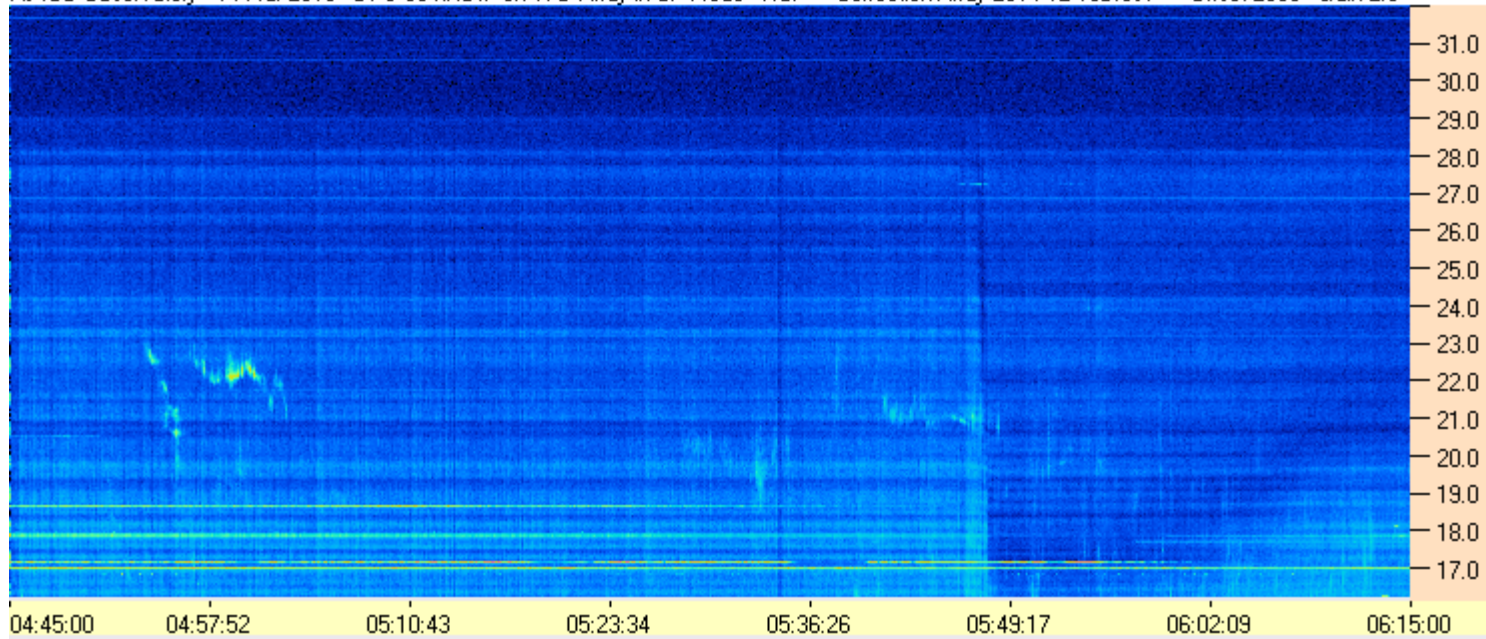
Dave

AJ4CO Observatory 14 Mar 2015, log entry 378





AJ4CO Observatory - 14 Mar 2015 - DPS 30 kHz IF on TFD Array in CP Mode - RCP Correction Array 2014 12 18B.csv Offset 2050 Gain 2.5



AJ4CO Observatory - 14 Mar 2015 - DPS 30 kHz IF on TFD Array in CP Mode - LCP Correction Array 2014 12 18B.csv Offset 2050 Gain 2.5

