

Subject: [radiojove-data] 13 Mar 2015 Io-A/C

From: Dave Typinski <davetyp@typnet.net>

Date: 03/14/2015 11:57

To: RadioJove-Data <radiojove-data@lists.nasa.gov>

Adding to Jim & Tom & David's nice reports, here's some Io-A/C from Friday morning.

A little low on the phase plane to fit in the rectangle for Io-C, but as Tom pointed out, the emission envelopes and burst types have all the earmarks of an Io-A/C storm. Namely N events for Io-C and vertex late arcs for A and C.

RCP dominant L bursting 0237-0335 UTC from 16 to 28 MHz, vertex late arcs, no modulation lanes visible.

LCP dominant N events 0338-0446 UTC from 16 to 21 MHz, vertex late arcs.

LCP dominant L bursting 0345-0440 UTC from 16 to 21 MHz, vertex late arcs, no modulation lanes visible.

RCP dominant L bursting 0445-0517 UTC from 16 to 23 MHz, vertex late arcs, no modulation lanes visible.

Power line noise present throughout.

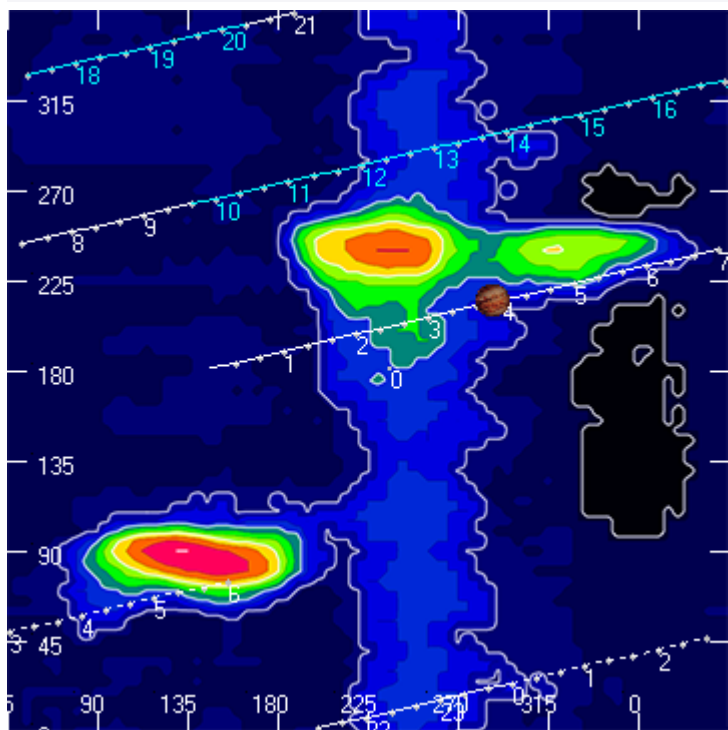
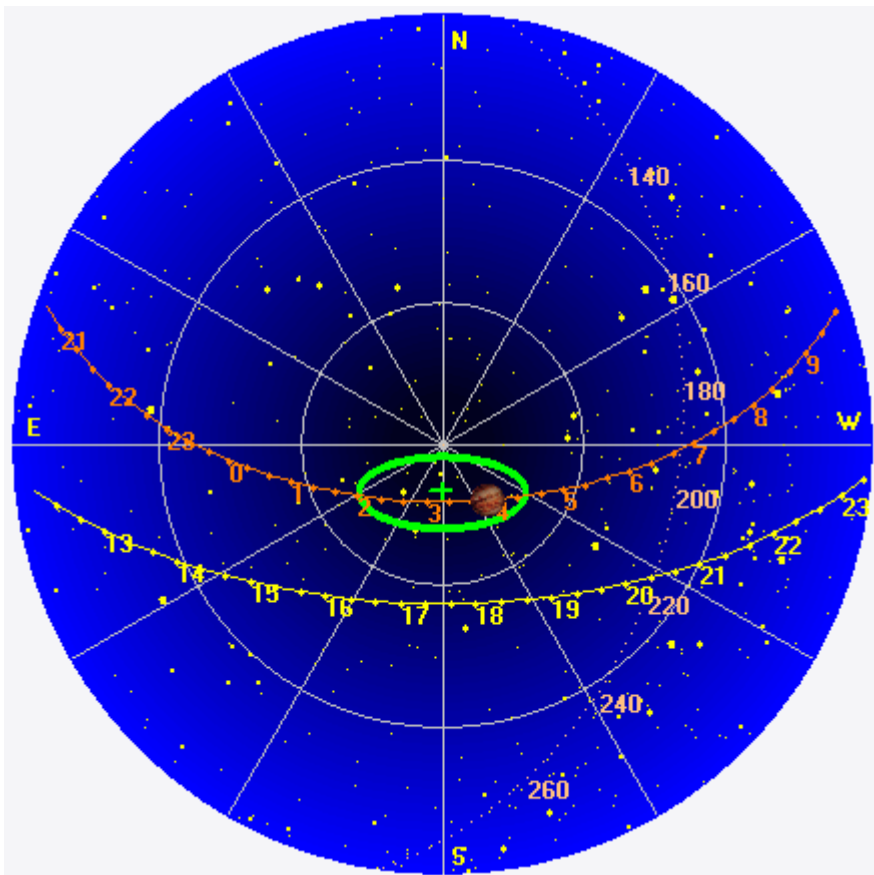
Jupiter was -9° to $+30^\circ$ off axis.

Jupiter was trailing the Sun by 141° .

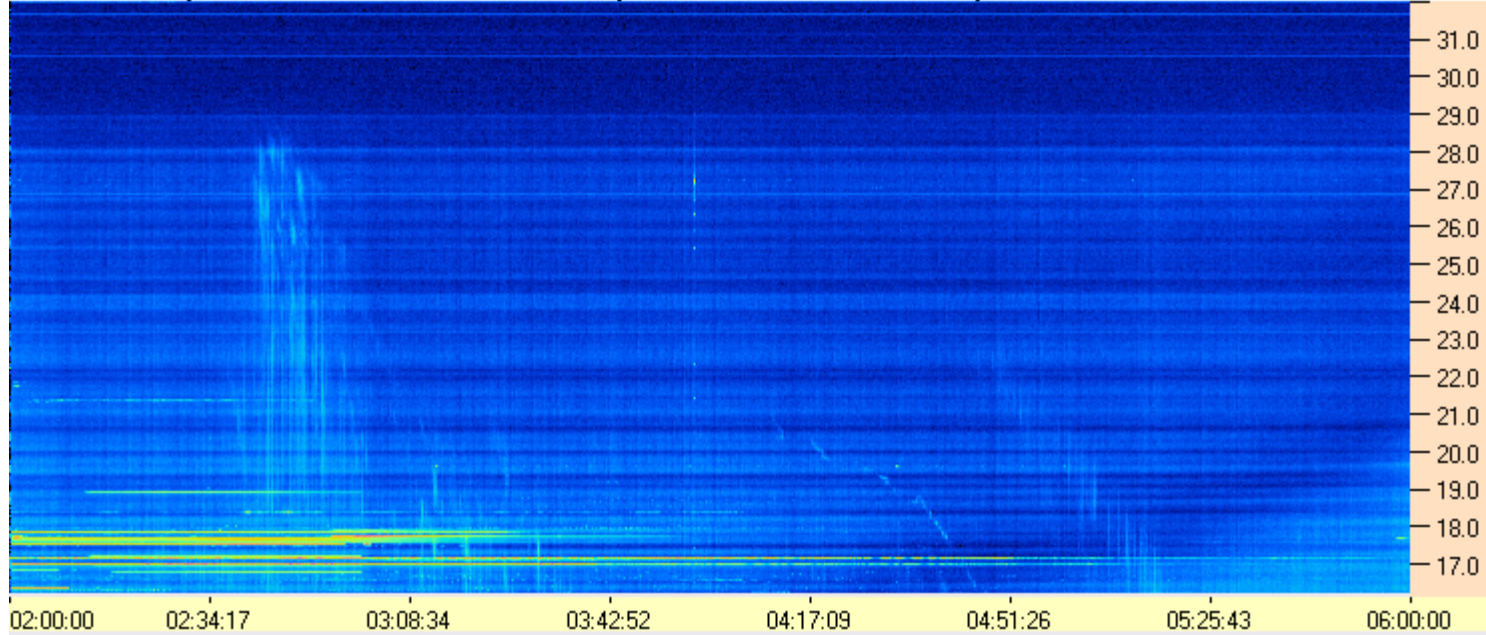
--

Dave

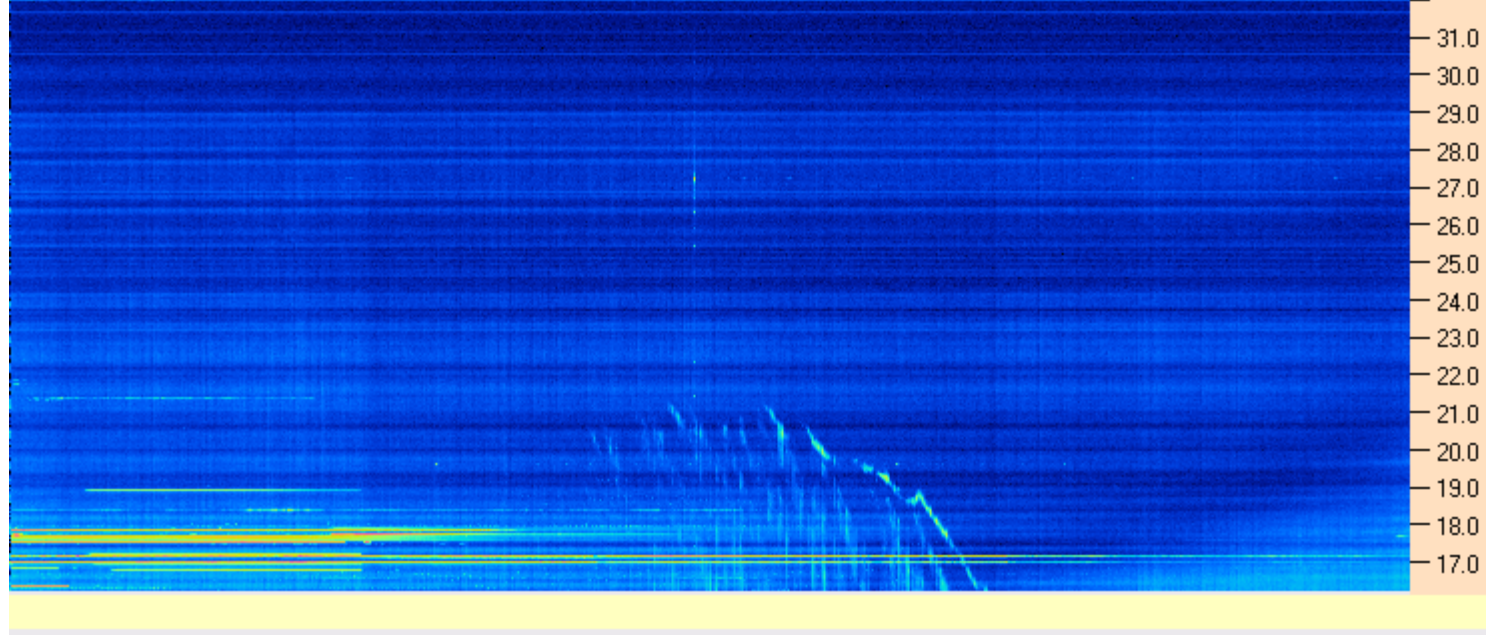
AJ4CO Observatory 13 Mar 2015, log entry 375, 376, 377



AJ4CO Observatory - 13 Mar 2015 - DPS 30 kHz IF on TFD Array in CP Mode - RCP Correction Array 2014 12 18B.csv Offset 2050 Gain 2.5



AJ4CO Observatory - 13 Mar 2015 - DPS 30 kHz IF on TFD Array in CP Mode - LCP Correction Array 2014 12 18B.csv Offset 2050 Gain 2.5



03/13/2015 by AJ4CO RSP in High Springs, FL

