

Subject: [radiojove-data] 12 Mar 2015 non-Io-B

From: Dave Typinski <davetyp@typnet.net>

Date: 03/14/2015 11:55

To: RadioJove-Data <radiojove-data@lists.nasa.gov>

Adding to Jim & Wes's nice reports, here's some non-Io-B from Thursday morning.

RCP dominant L bursting 0305-0501 UTC from 16 to 23 MHz, vertex late arcs, no modulation lanes visible.

Power line noise present throughout.

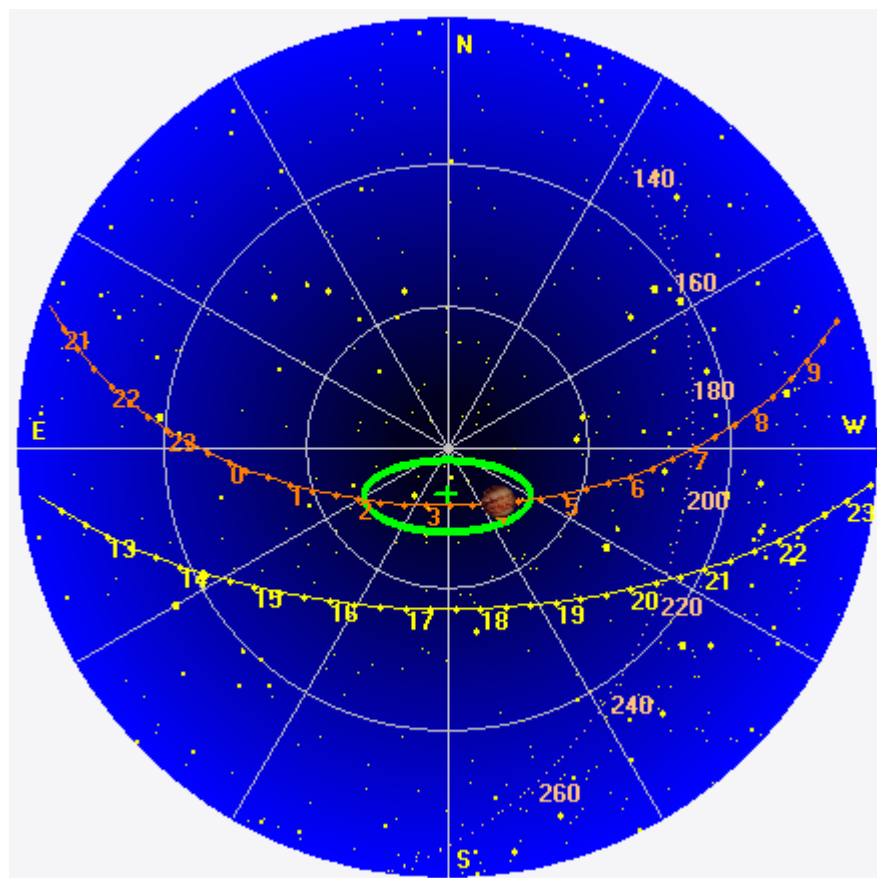
Jupiter was -4° to $+25^\circ$ off axis.

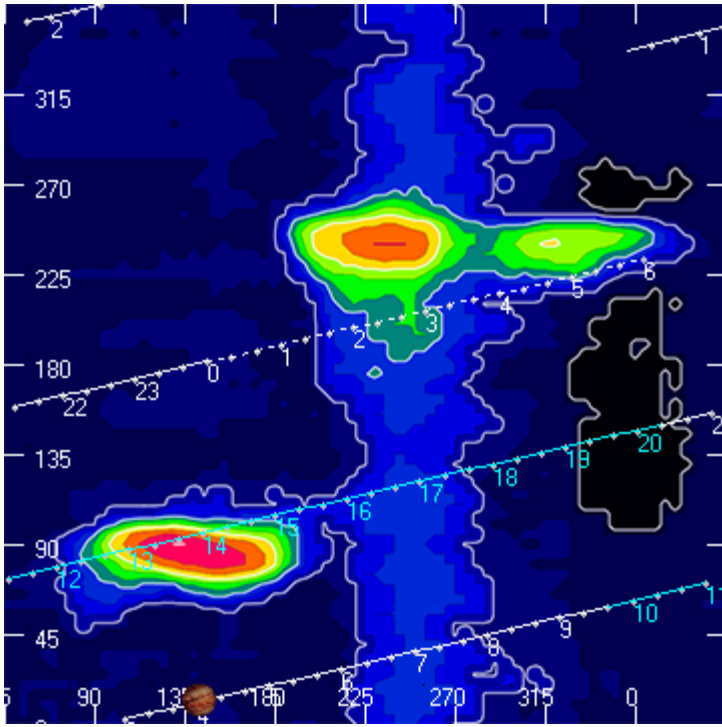
Jupiter was trailing the Sun by 143° .

--

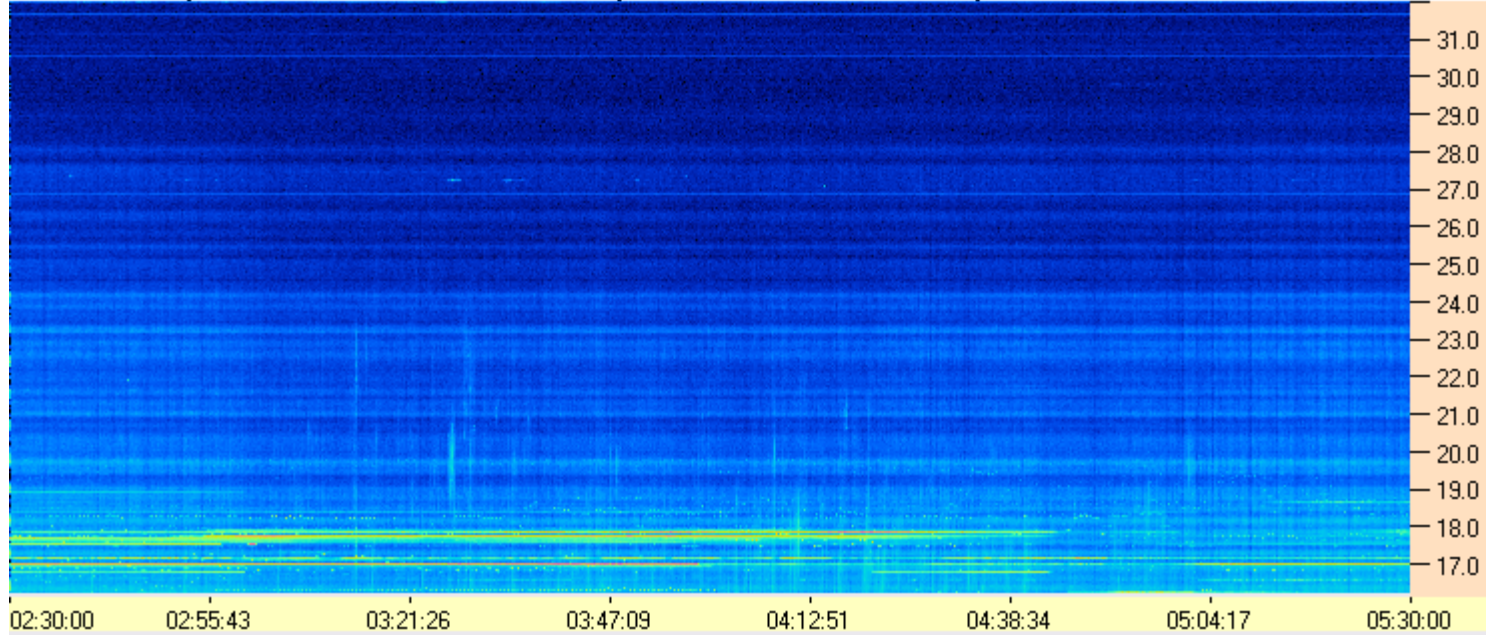
Dave

AJ4CO Observatory 12 Mar 2015, log entry 374





AJ4CO Observatory - 12 Mar 2015 - DPS 30 kHz IF on TFD Array in CP Mode - RCP Correction Array 2014 12 18B.csv Offset 2050 Gain 2.5



AJ4CO Observatory - 12 Mar 2015 - DPS 30 kHz IF on TFD Array in CP Mode - LCP Correction Array 2014 12 18B.csv Offset 2050 Gain 2.5

