

Subject: [radiojove-data] 11 Mar 2015 non-Io-A/C

From: Dave Typinski <davetyp@typnet.net>

Date: 03/14/2015 11:54

To: RadioJove-Data <radiojove-data@lists.nasa.gov>

Adding to Wes & Tom & Jim's nice reports, here's some non-Io-A/C from Wednesday morning.

As Tom noted, it's interesting that the emission extended through the very low probability area of the phase plane.

LCP dominant L bursting 0033-0131 UTC from 16 to 23 MHz, vertex early arcs, no modulation lanes visible.

RCP dominant L bursting 0234-0327 UTC from 16 to 24 MHz, vertex late arcs, no modulation lanes visible.

LCP dominant L bursting 0255-0440 UTC from 16 to 20 MHz, vertex late arcs, no modulation lanes visible.

Power line noise present throughout.

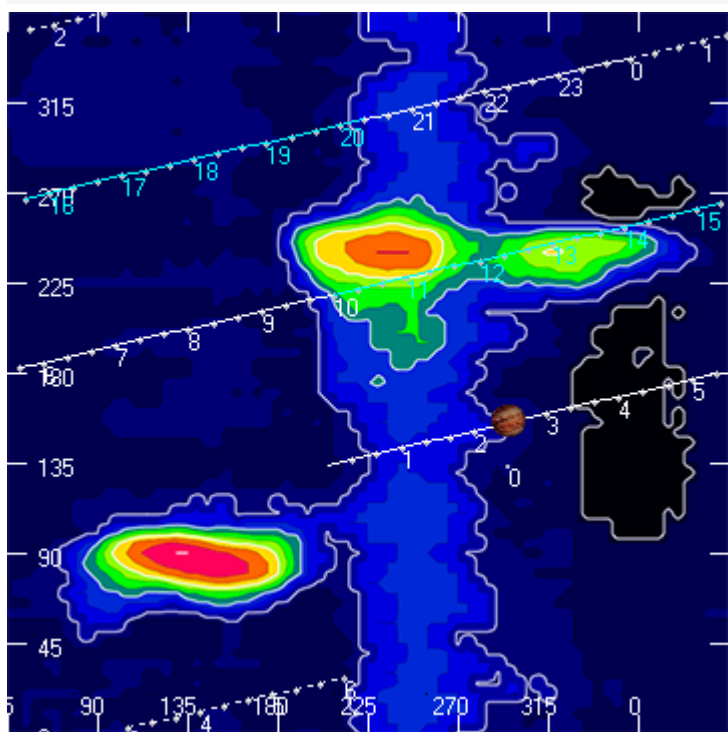
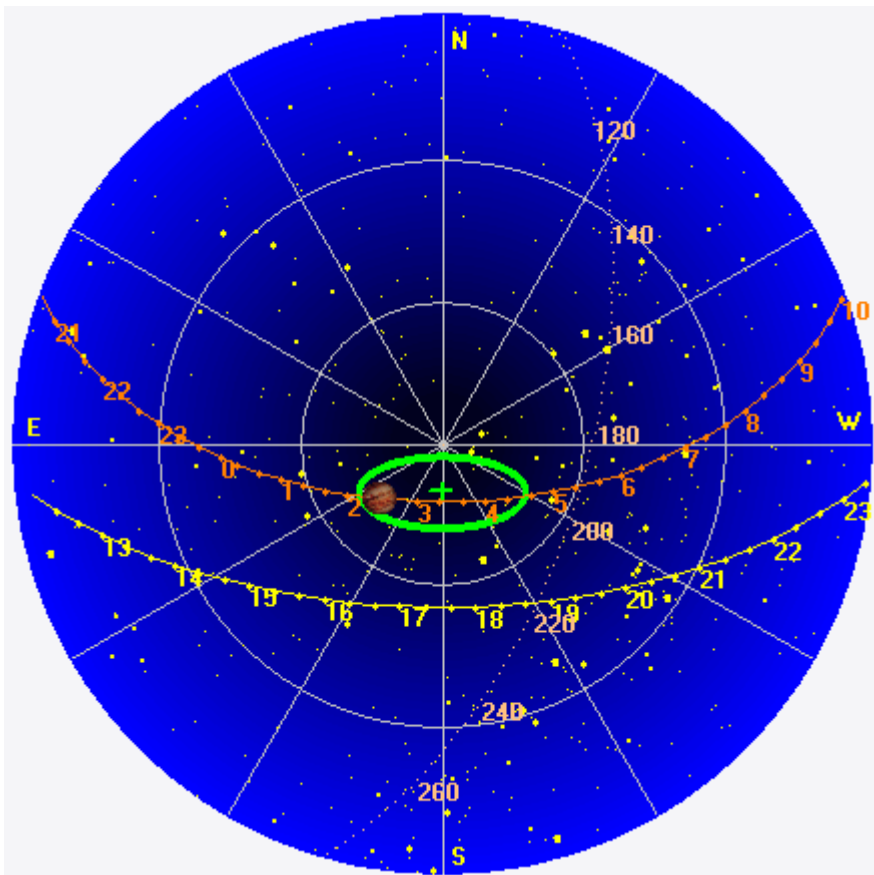
Jupiter was -41° to $+19^\circ$ off axis.

Jupiter was trailing the Sun by 144° .

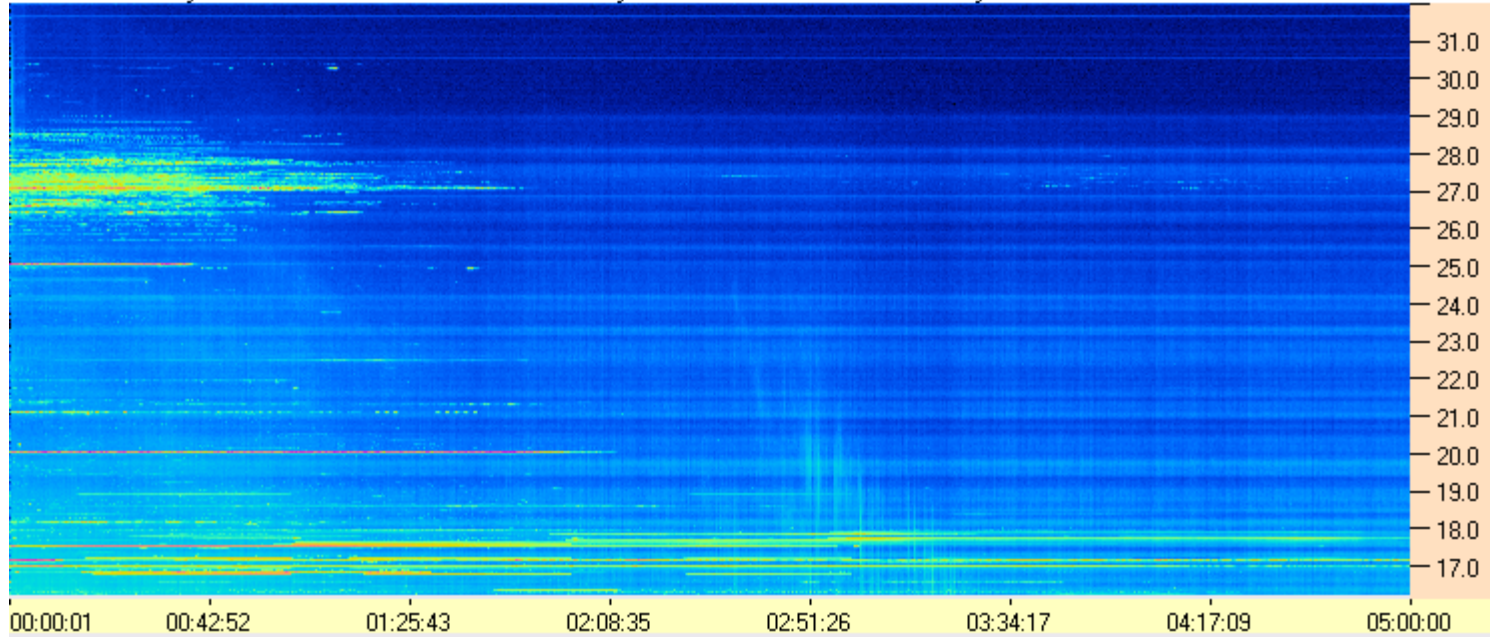
--

Dave

AJ4CO Observatory 11 Mar 2015, log entry 371,372, 373



AJ4CO Observatory - 11 Mar 2015 - DPS 30 kHz IF on TFD Array in CP Mode - RCP Correction Array 2014 12 18B.csv Offset 2050 Gain 2.0



AJ4CO Observatory - 11 Mar 2015 - DPS 30 kHz IF on TFD Array in CP Mode - LCP Correction Array 2014 12 18B.csv Offset 2050 Gain 2.0

