

Subject: [radiojove-data] 10 Mar 2015 non-Io-B

From: Dave Typinski <davetyp@typnet.net>

Date: 03/11/2015 22:34

To: RadioJove-Data <radiojove-data@lists.nasa.gov>

Here's some non-Io-B from Tuesday morning.

RCP dominant L bursting 0233-0319 UTC from 16 to 20 MHz, vertex early arcs, no modulation lanes visible.

Power line noise present throughout.

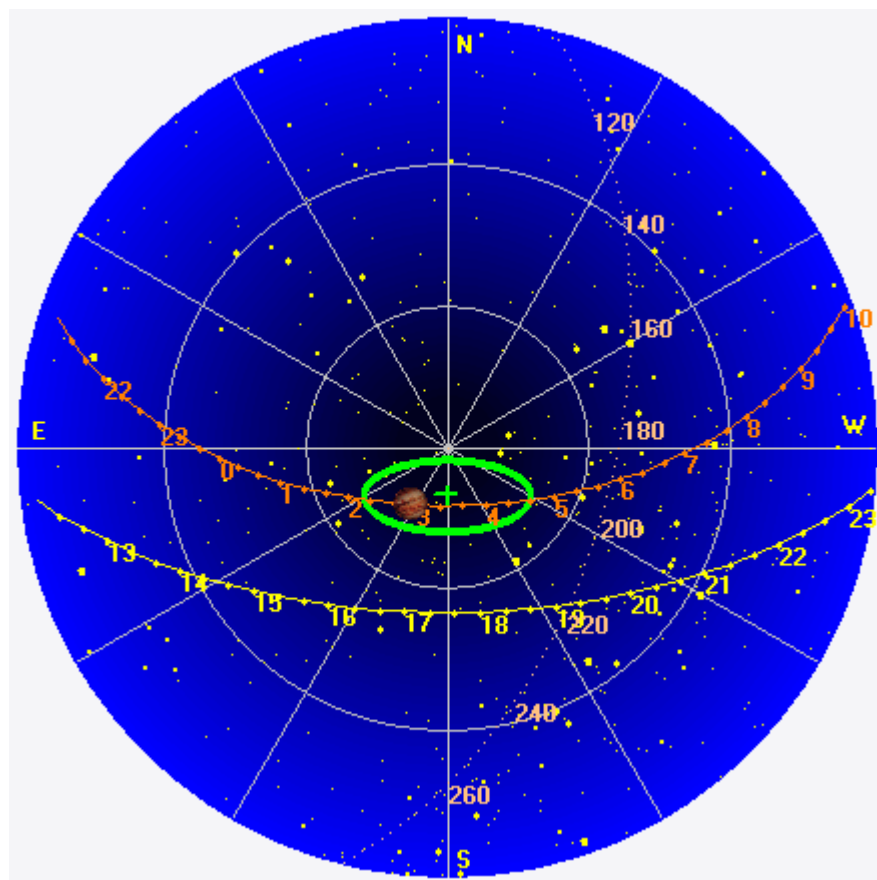
Jupiter was -13° to -3° off axis.

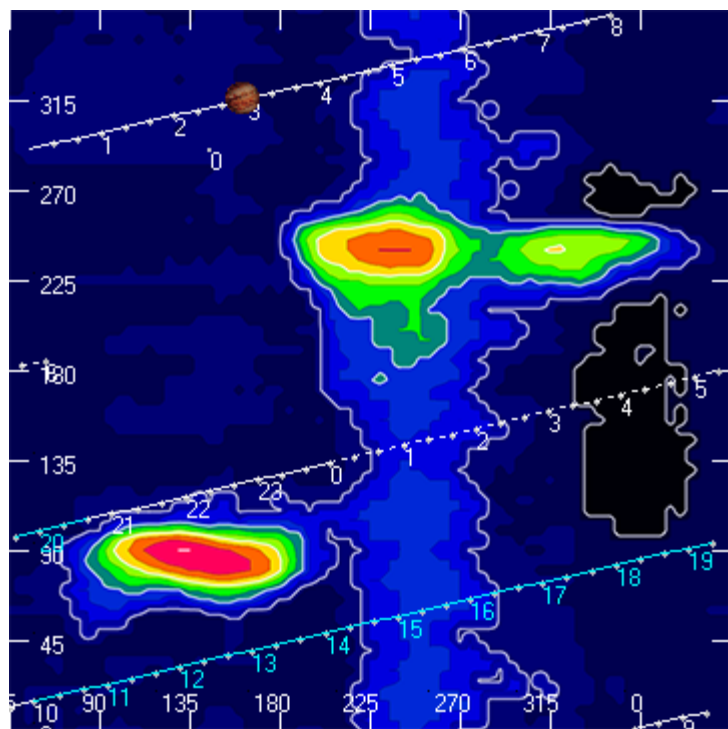
Jupiter was trailing the Sun by 145° .

--

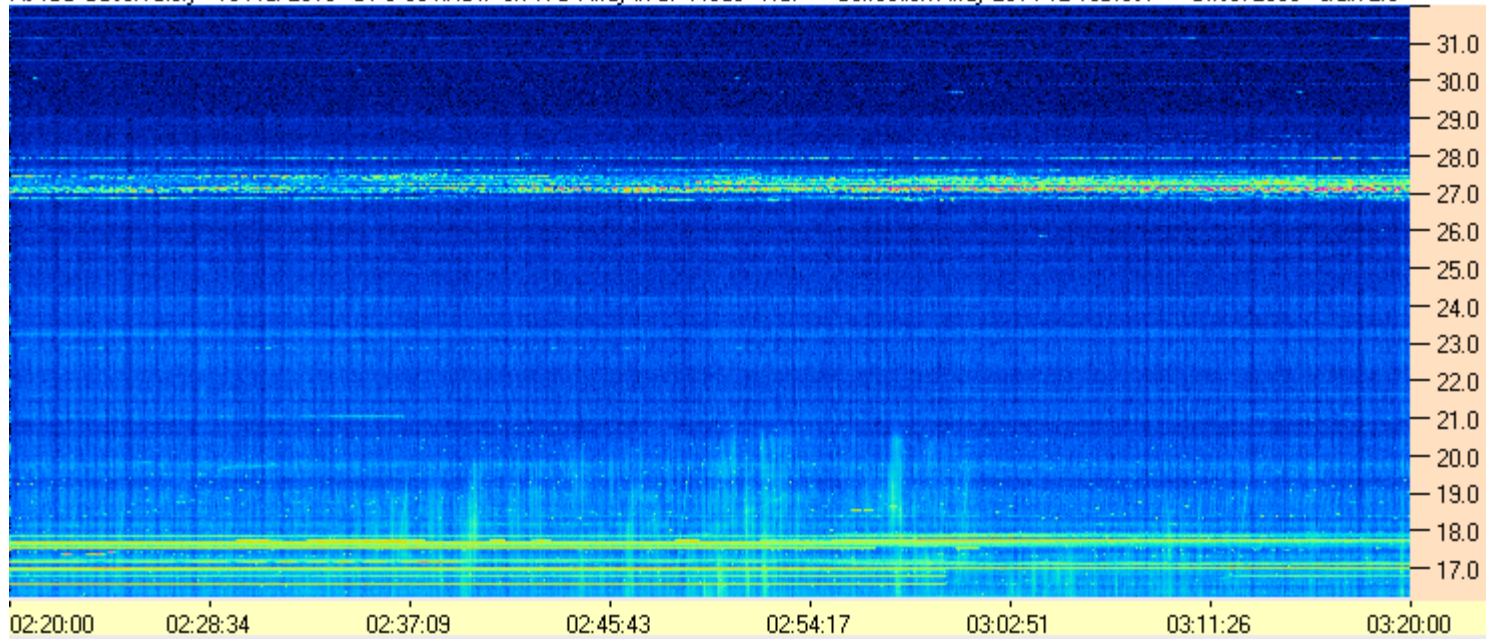
Dave

AJ4CO Observatory 10 Mar 2015, log entry 370

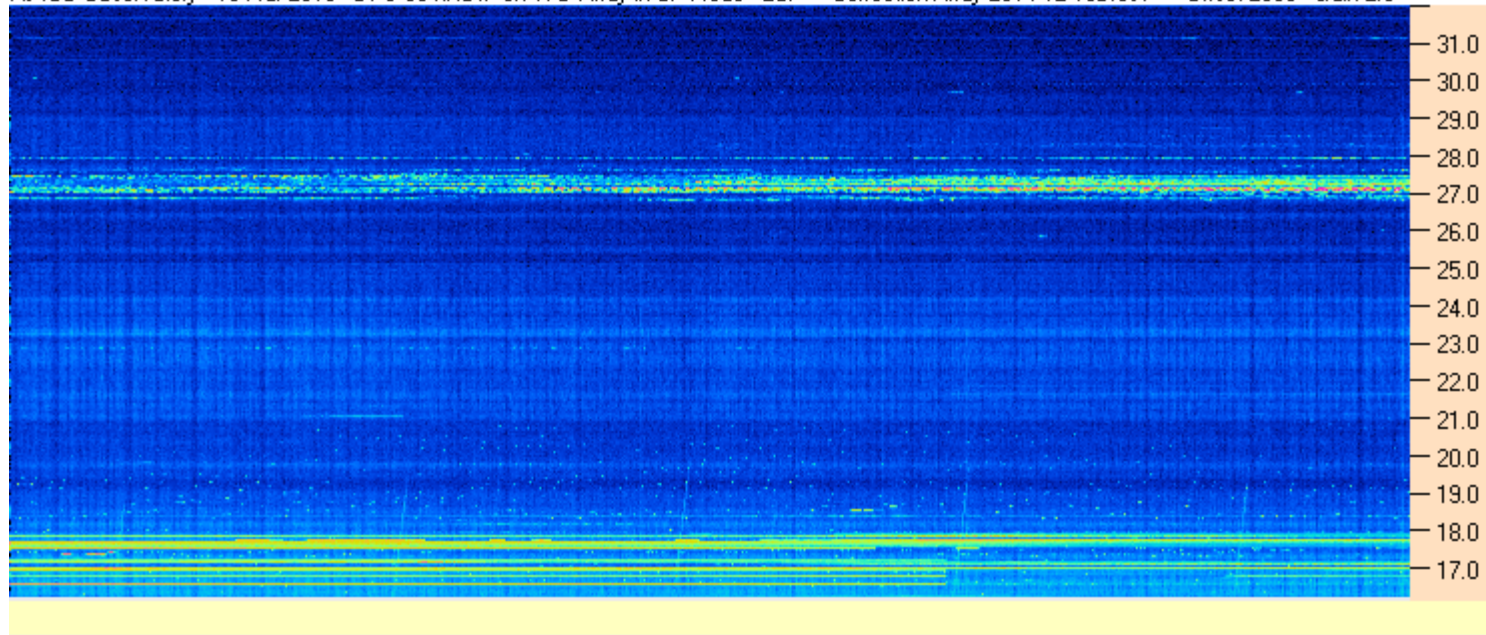




AJ4CO Observatory - 10 Mar 2015 - DPS 30 kHz IF on TFD Array in CP Mode - RCP Correction Array 2014 12 18B.csv Offset 2050 Gain 2.0



AJ4CO Observatory - 10 Mar 2015 - DPS 30 kHz IF on TFD Array in CP Mode - LCP Correction Array 2014 12 18B.csv Offset 2050 Gain 2.0



03/10/2015 by AJ4CO RSP in High Springs, FL

