

**Subject:** [radiojove-data] 08 Mar 2015 non-Io-A

**From:** Dave Typinski <davetyp@typnet.net>

**Date:** 03/09/2015 19:20

**To:** RadioJove-Data <radiojove-data@lists.nasa.gov>

Adding to Tom & Jim's nice reports, here's some non-Io-A from Sunday morning.

RCP dominant L bursting 0331-0411 UTC from 16 to 24 MHz, vertex late arcs, no modulation lanes visible.

Jupiter was  $-3^\circ$  to  $+9^\circ$  off axis.

Jupiter was trailing the Sun by  $147^\circ$ .

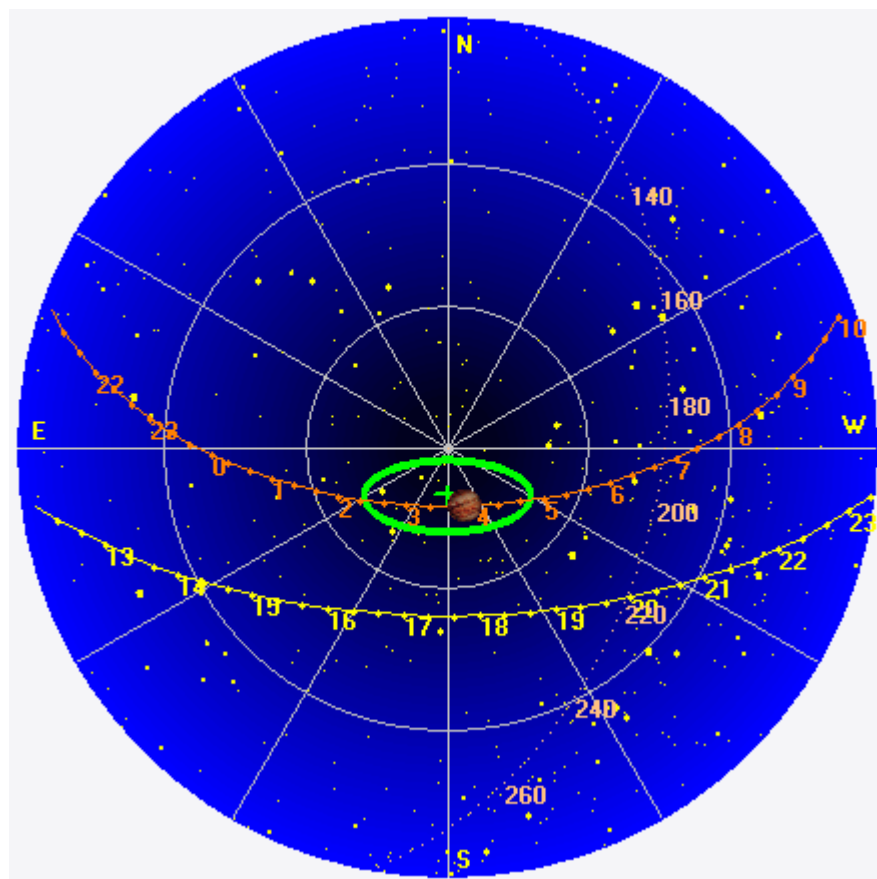
--

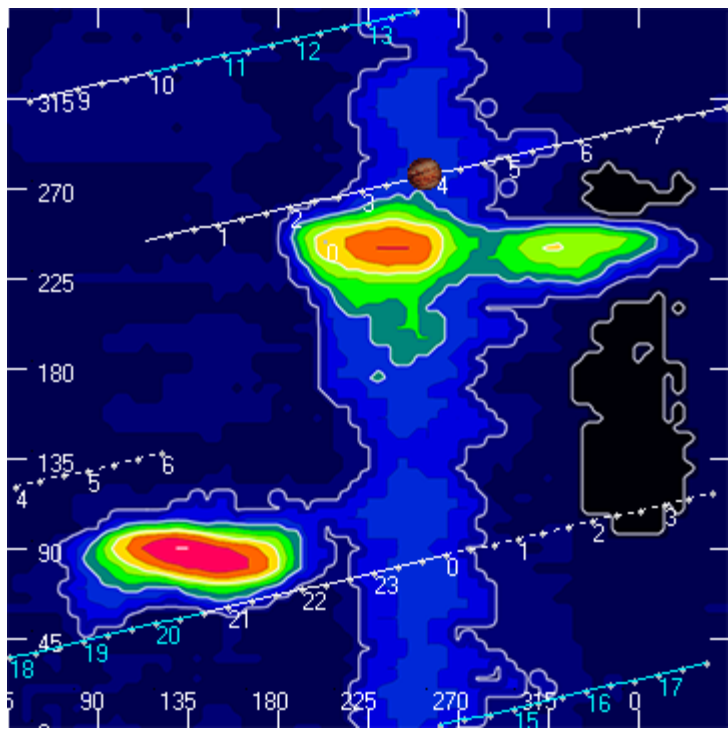
Dave

---

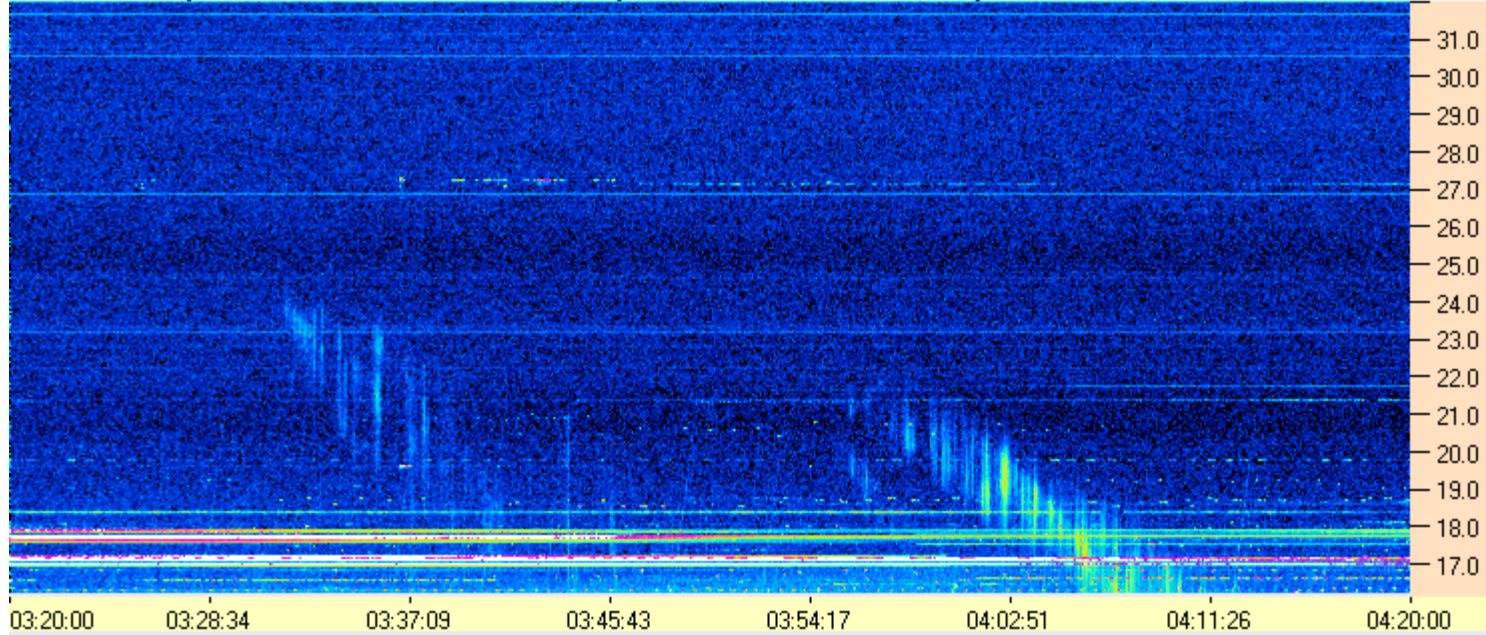
**AJ4CO Observatory 08 Mar 2015, log entry 369**

---





AJ4CO Observatory - 08 Mar 2015 - DPS 30 kHz IF on TFD Array in CP Mode - RCP Correction Array 2014 12 18B.csv Offset 2050 Gain 5.0



AJ4CO Observatory - 08 Mar 2015 - DPS 30 kHz IF on TFD Array in CP Mode - LCP Correction Array 2014 12 18B.csv Offset 2050 Gain 5.0

