

Subject: [radiojove-data] 05 Mar 2015 non-Io-A

From: Dave Typinski <davetyp@typnet.net>

Date: 03/06/2015 21:36

To: RadioJove-Data <radiojove-data@lists.nasa.gov>

Adding to Tom & Wes & David's nice reports, here's some non-Io-A from Thursday morning.

RCP dominant L bursting 0606-0654 UTC from 16 to 27 MHz, vertex late arcs.

LCP dominant L bursting 0602-0646 UTC from 16 to 17 MHz, vertex late arcs.

Low level line noise throughout.

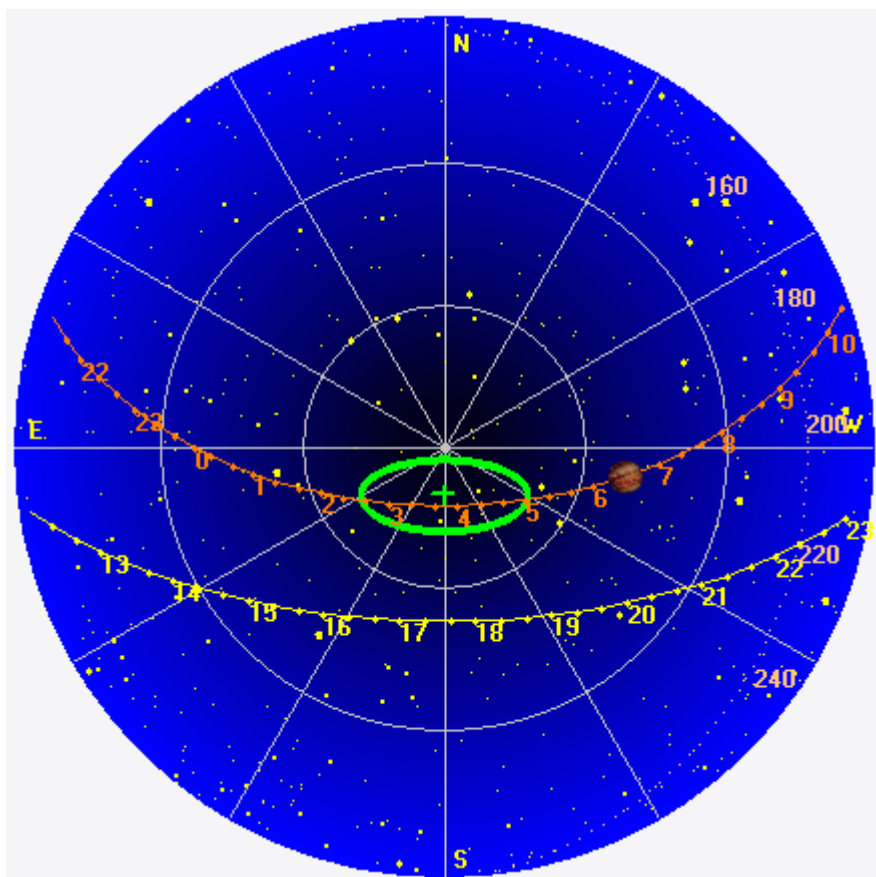
Jupiter was +32° to +45° off axis.

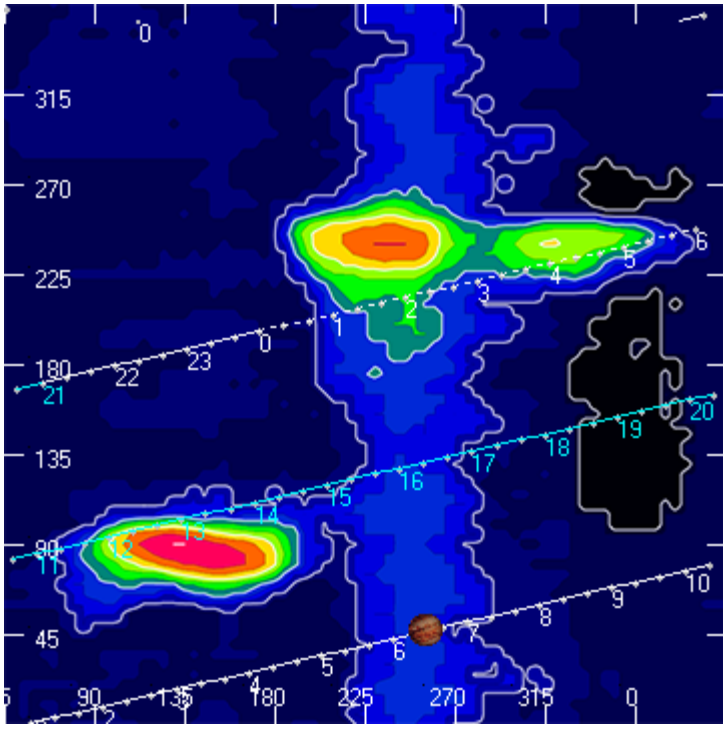
Jupiter was trailing the Sun by 150°.

--

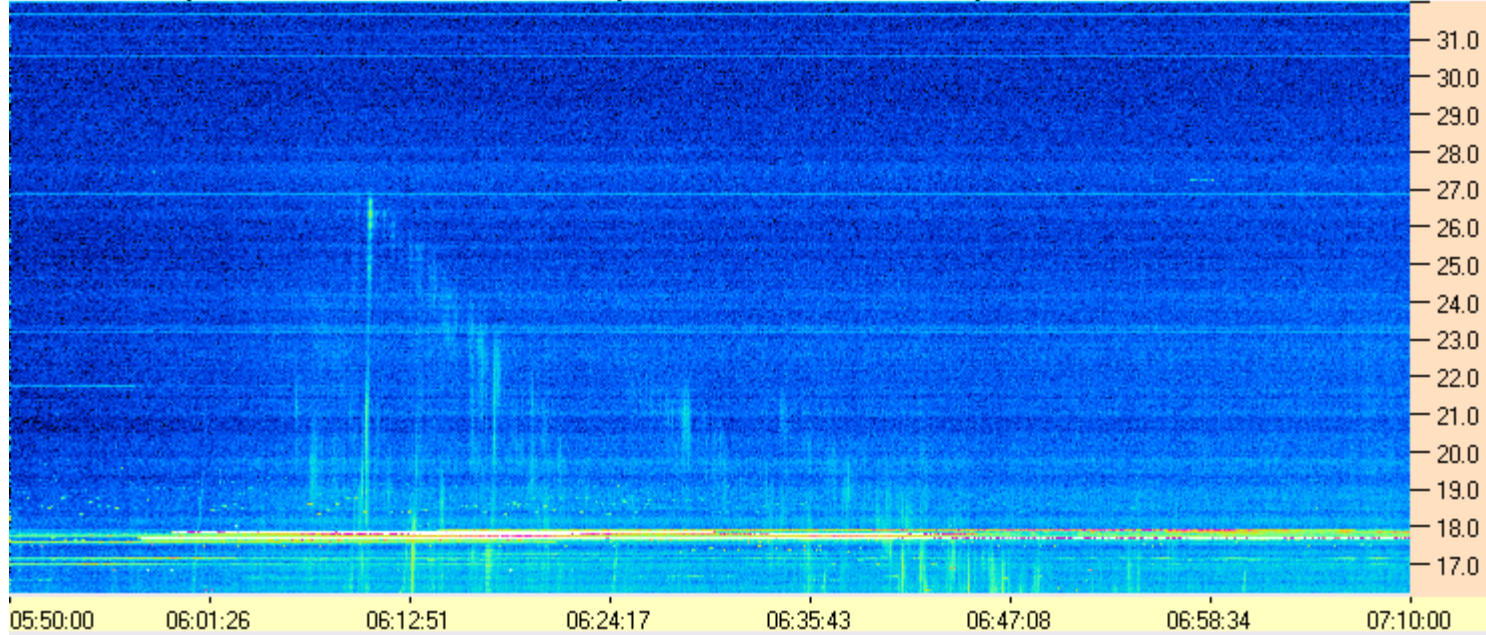
Dave

AJ4CO Observatory 05 Mar 2015, log entry 363(RCP), 364(LCP)

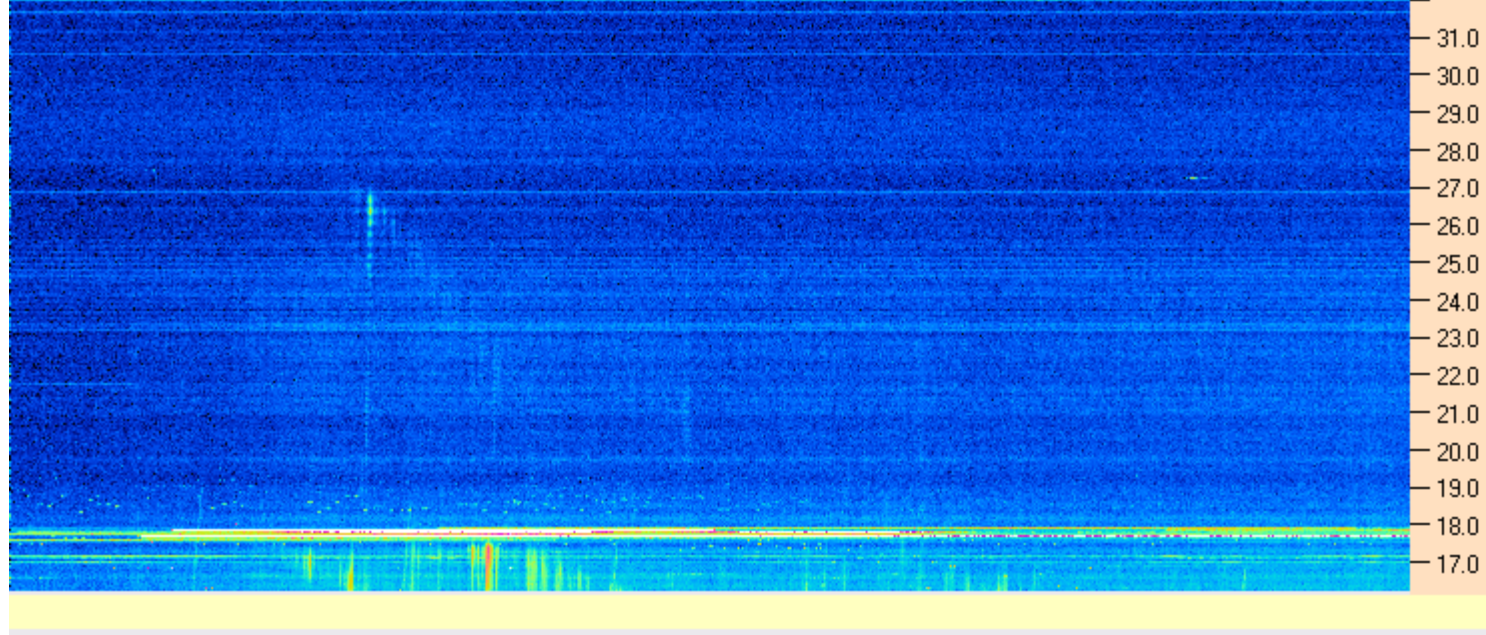




AJ4CO Observatory - 05 Mar 2015 - DPS 30 kHz IF on TFD Array in CP Mode - RCP Correction Array 2014 12 18B.csv Offset 2050 Gain 5.0



AJ4CO Observatory - 05 Mar 2015 - DPS 30 kHz IF on TFD Array in CP Mode - LCP Correction Array 2014 12 18B.csv Offset 2050 Gain 5.0



03/05/2015 by AJ4CO RSP in High Springs, FL

