

Subject: [radiojove-data] 02 Mar 2015 non-Io-A

From: Dave Typinski <davetyp@typnet.net>

Date: 03/04/2015 02:39

To: RadioJove-Data <radiojove-data@lists.nasa.gov>

Adding to Tom's nice report, here's some non-Io-A from Monday morning.

RCP dominant L bursting 0744-0754 UTC from 16 to 19 MHz, downward drift, no modulation lanes.

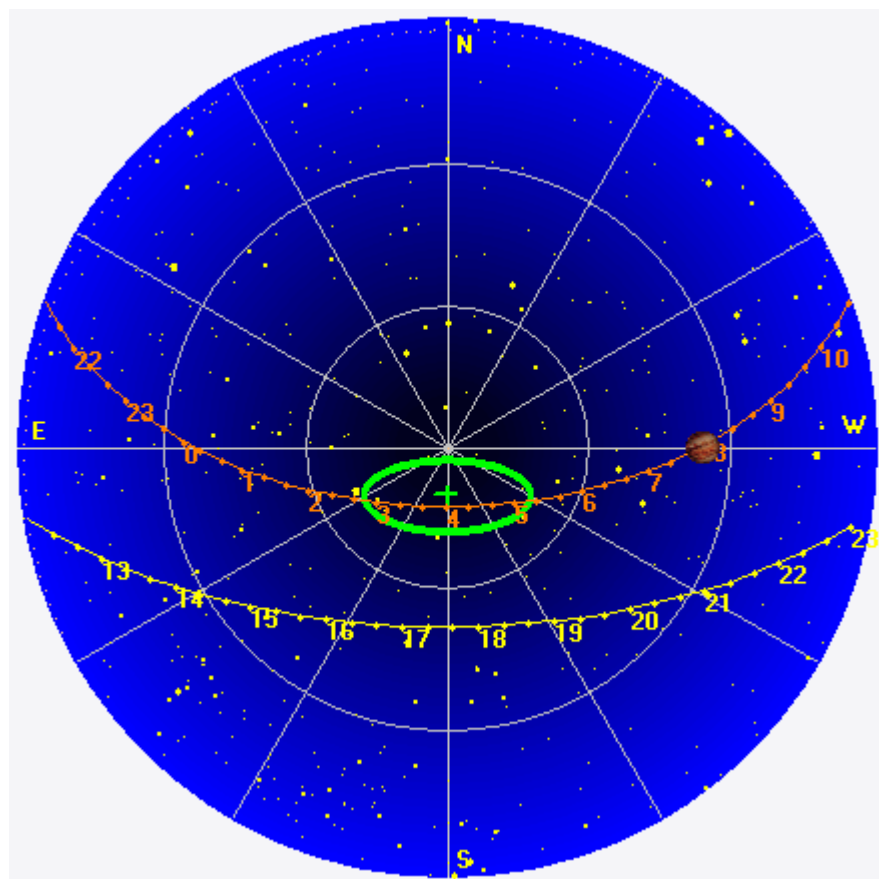
Jupiter was $+53^\circ$ to $+56^\circ$ off axis.

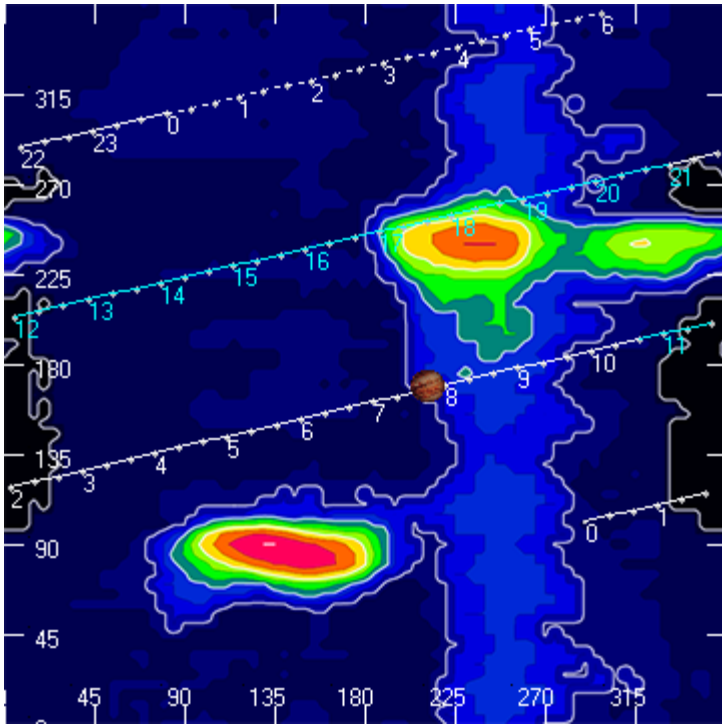
Jupiter was trailing the Sun by 153° .

--

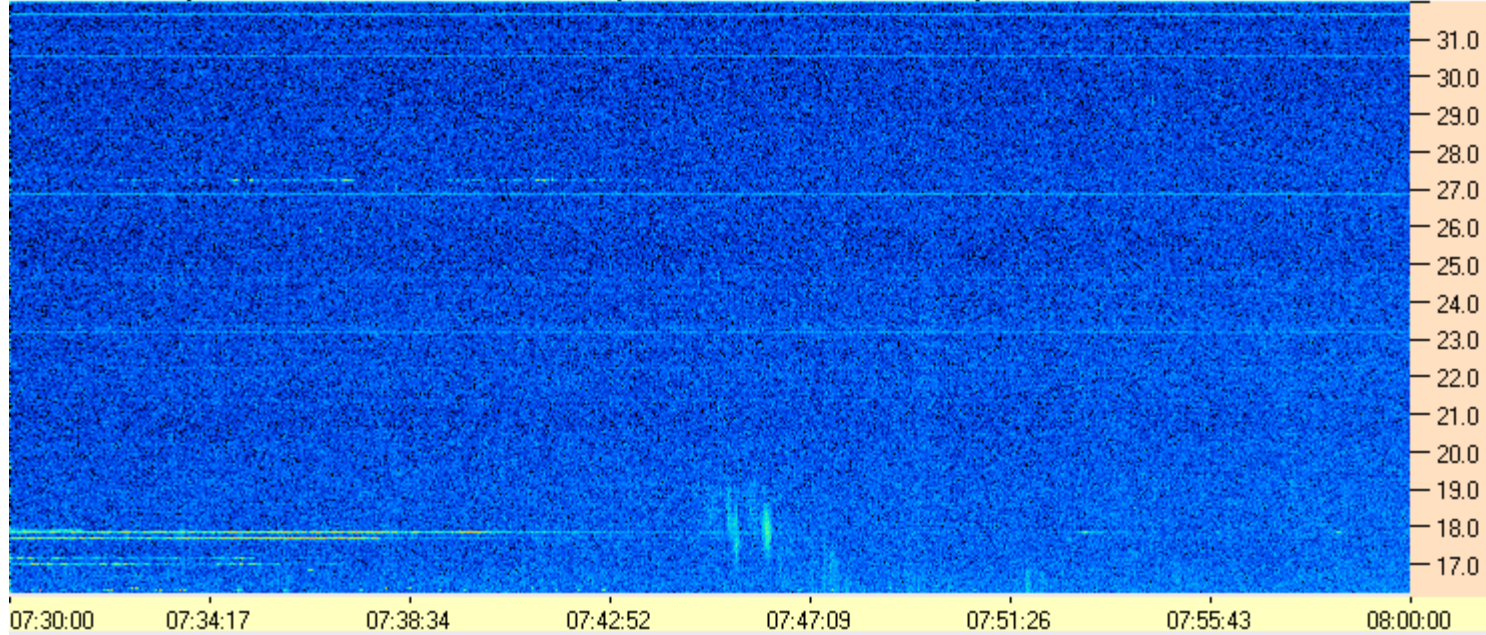
Dave

AJ4CO Observatory 02 Mar 2015, log entry 359

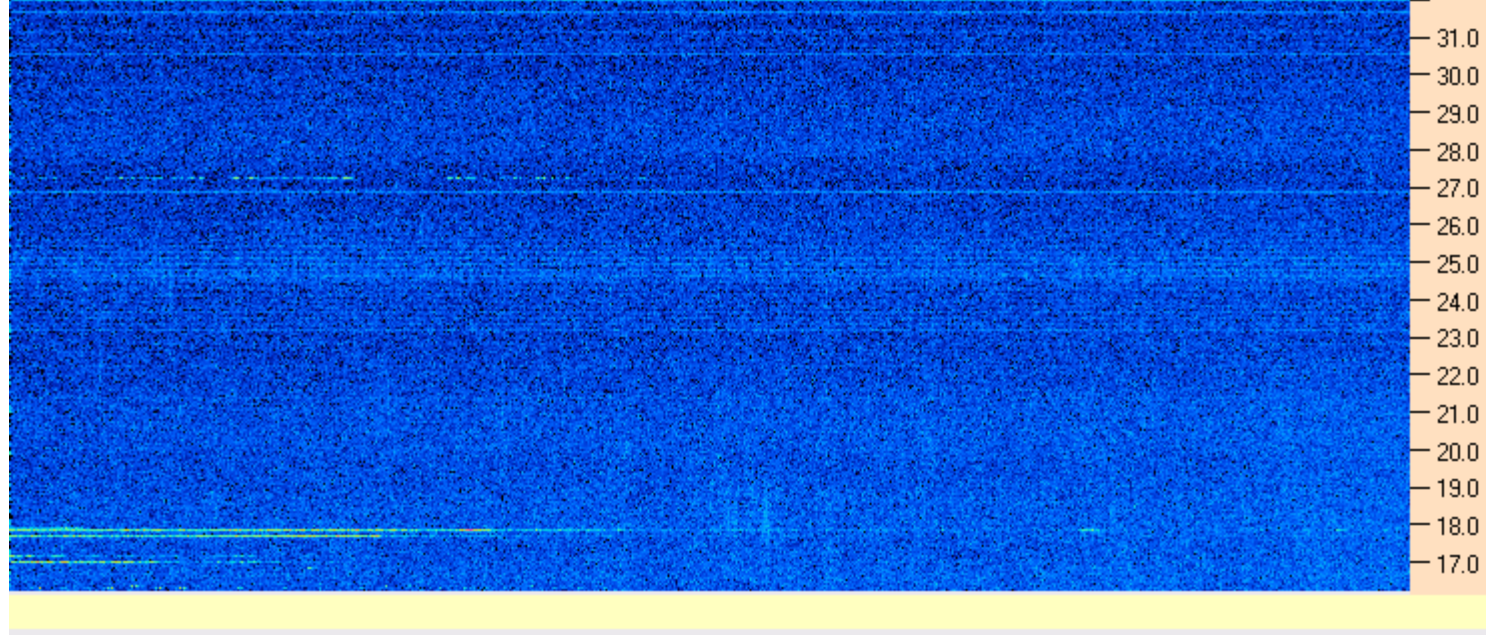




AJ4CO Observatory - 02 Mar 2015 - DPS 30 kHz IF on TFD Array in CP Mode - RCP Correction Array 2014 12 18B.csv Offset 2050 Gain 5.0



AJ4CO Observatory - 02 Mar 2015 - DPS 30 kHz IF on TFD Array in CP Mode - LCP Correction Array 2014 12 18B.csv Offset 2050 Gain 5.0



03/02/2015 by AJ4CO RSP in High Springs, FL

