

Subject: [radiojove-data] 28 Feb 2015 non-Io-A

From: Dave Typinski <davetyp@typnet.net>

Date: 03/01/2015 11:48

To: RadioJove-Data <radiojove-data@lists.nasa.gov>

Adding to Jim & Tom & Wes & David's nice reports, here's some non-Io-A from Saturday morning.

RCP dominant L bursting 0604-0625 UTC from 16 to 23 MHz, vertex late arc(s), no modulation lanes.

LCP dominant L bursting 0702-0734 UTC from 16 to 18 MHz, upward drifting, no lanes.

Minimal line noise.

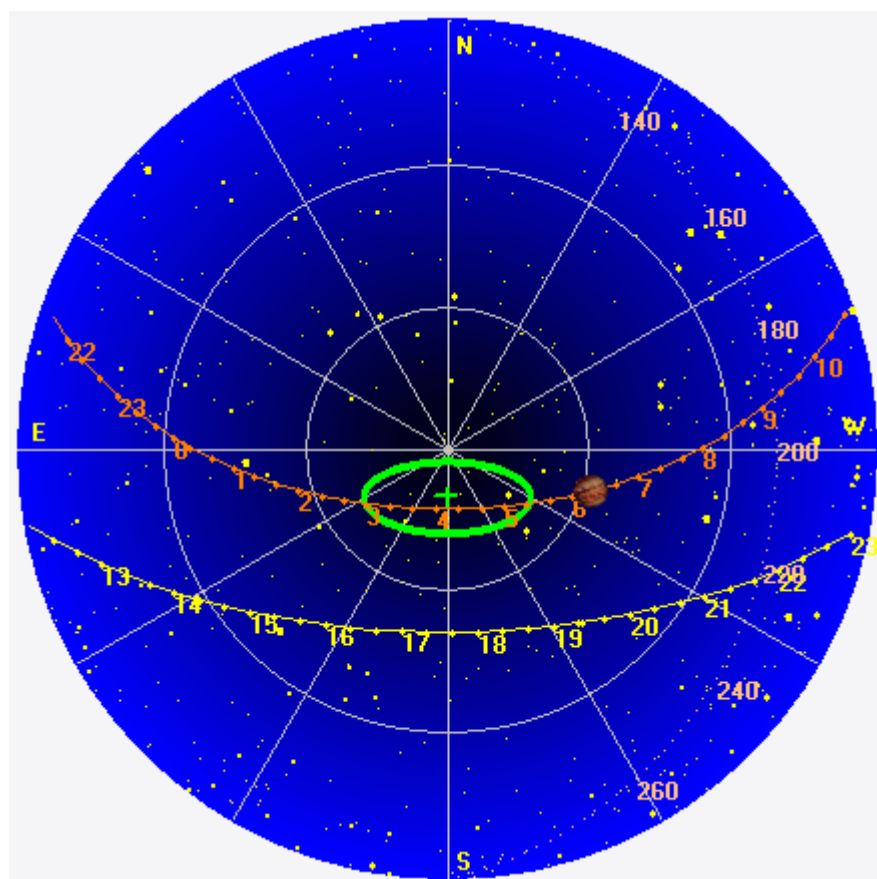
Jupiter was +27° to +49° off axis.

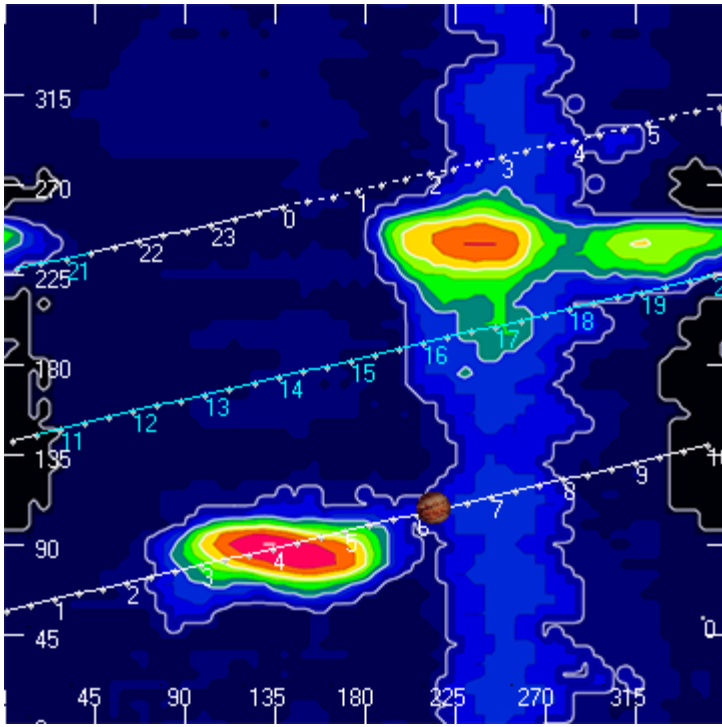
Jupiter was trailing the Sun by 156°.

--

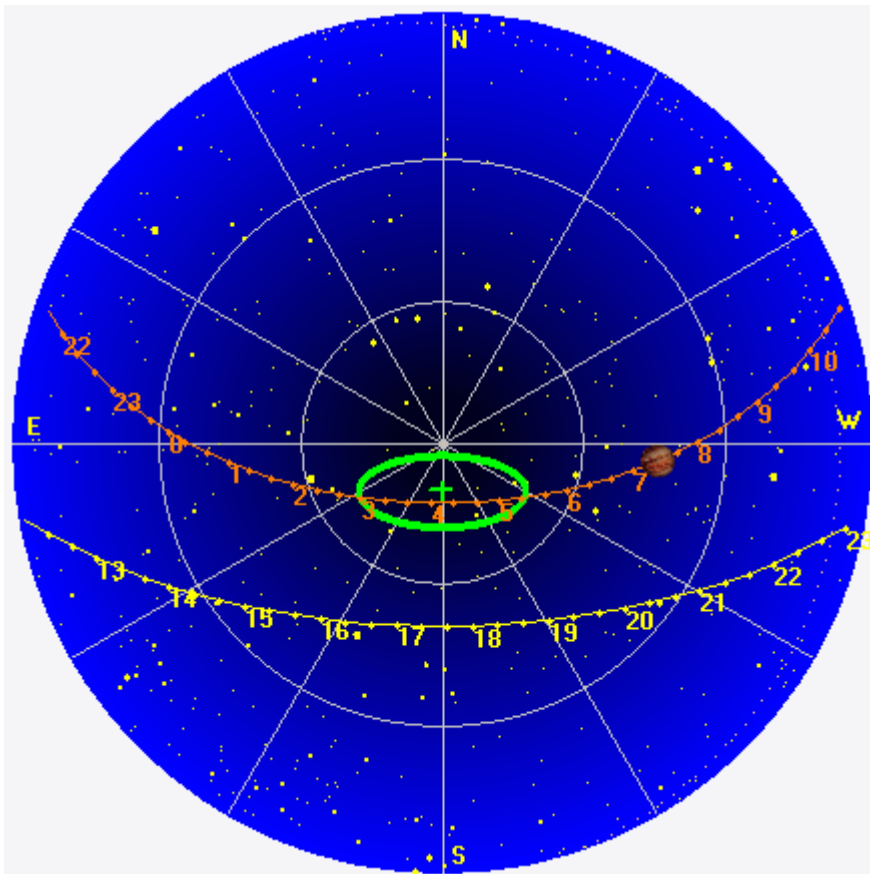
Dave

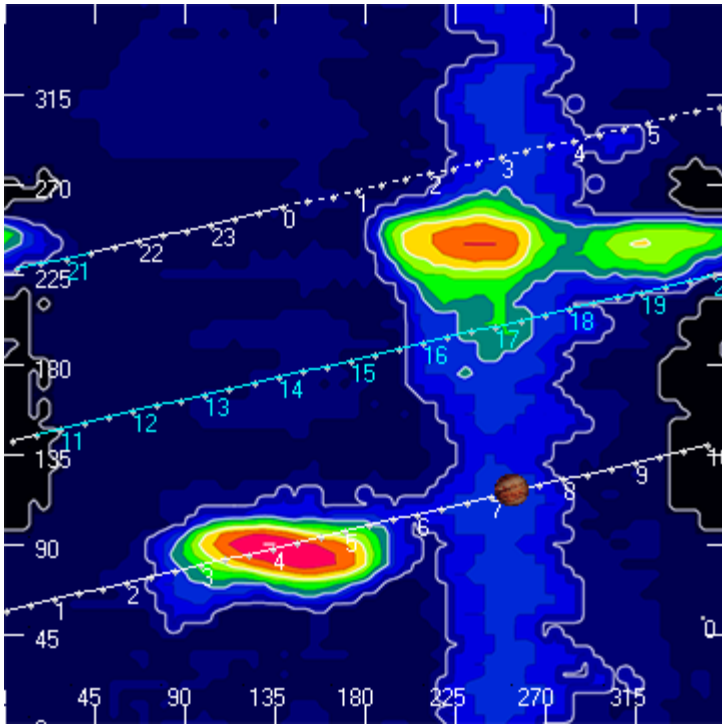
AJ4CO Observatory 28 Feb 2015, log entry 357 – RCP



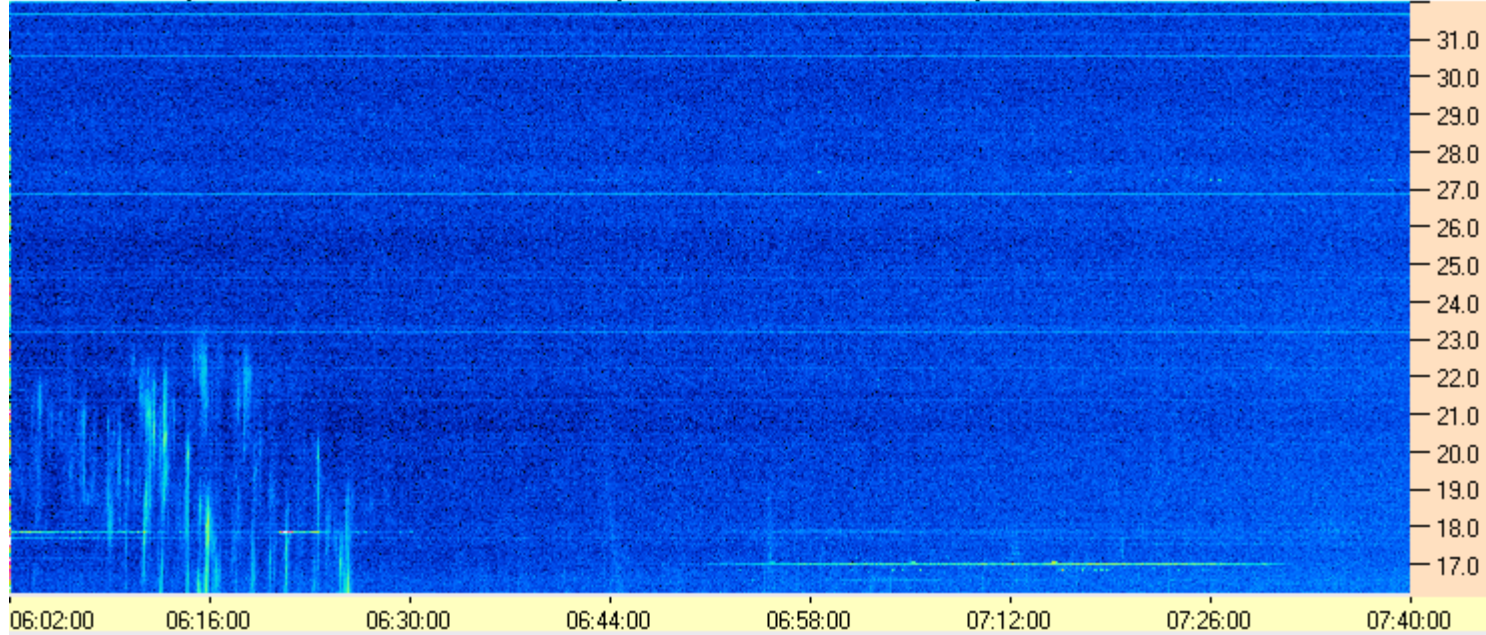


AJ4CO Observatory 28 Feb 2015, log entry 358 – LCP

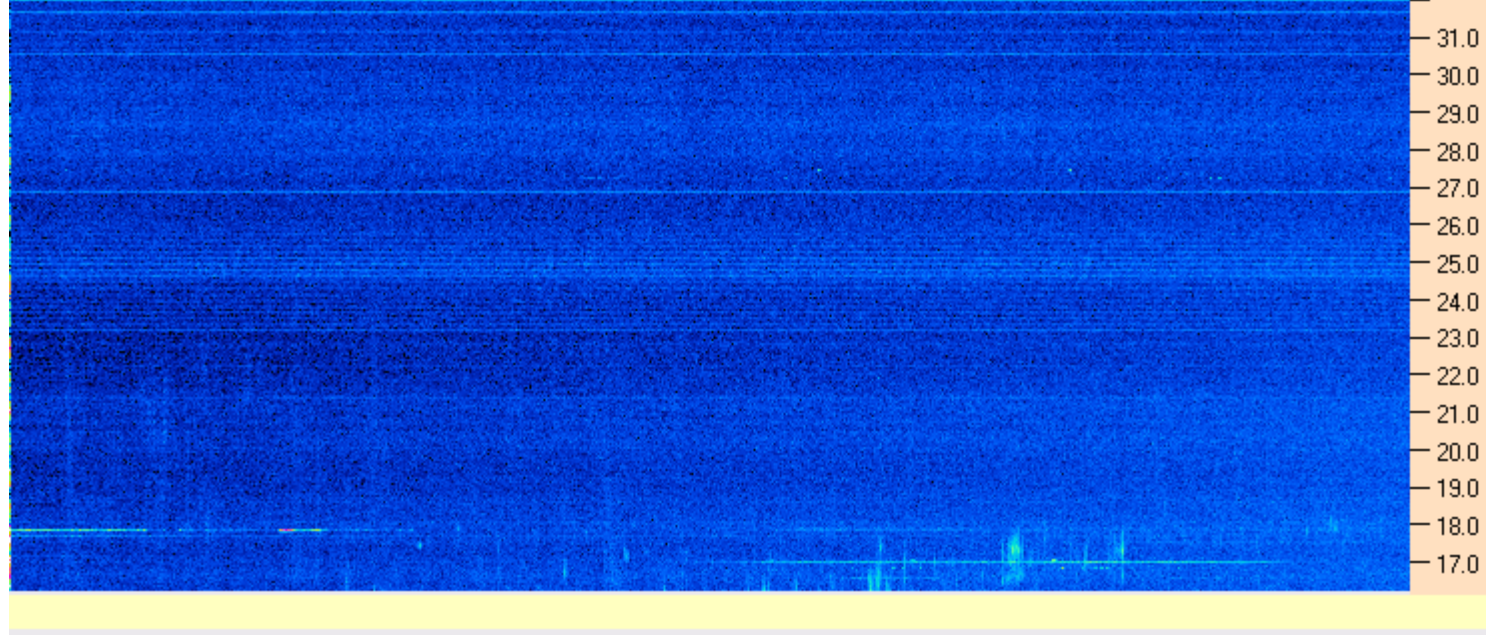




AJ4CO Observatory - 28 Feb 2015 - DPS 30 kHz IF on TFD Array in CP Mode - RCP Correction Array 2014 12 18B.csv Offset 2050 Gain 5.0



AJ4CO Observatory - 28 Feb 2015 - DPS 30 kHz IF on TFD Array in CP Mode - LCP Correction Array 2014 12 18B.csv Offset 2050 Gain 5.0



02/28/2015 by AJ4CO RSP in High Springs, FL

