

Subject: [radiojove-data] 27 Feb 2015 Io-C

From: Dave Typinski <davetyp@typnet.net>

Date: 03/01/2015 00:15

To: RadioJove-Data <radiojove-data@lists.nasa.gov>

Adding to Tom & Wes & Jim & David's nice reports, here's some Io-C from Friday morning.

LCP dominant L bursting 0222-0442 UTC from 16 to 25 MHz, vertex late arc(s).

LCP dominant N events 0225-0253 UTC from 21 to 24 MHz, generally decreasing in frequency.

LCP dominant narrow band S burst trains 0257-0400 UTC from 16 to 20 MHz, generally decreasing in frequency.

Heavy line noise throughout. Strip charts of minimal use.

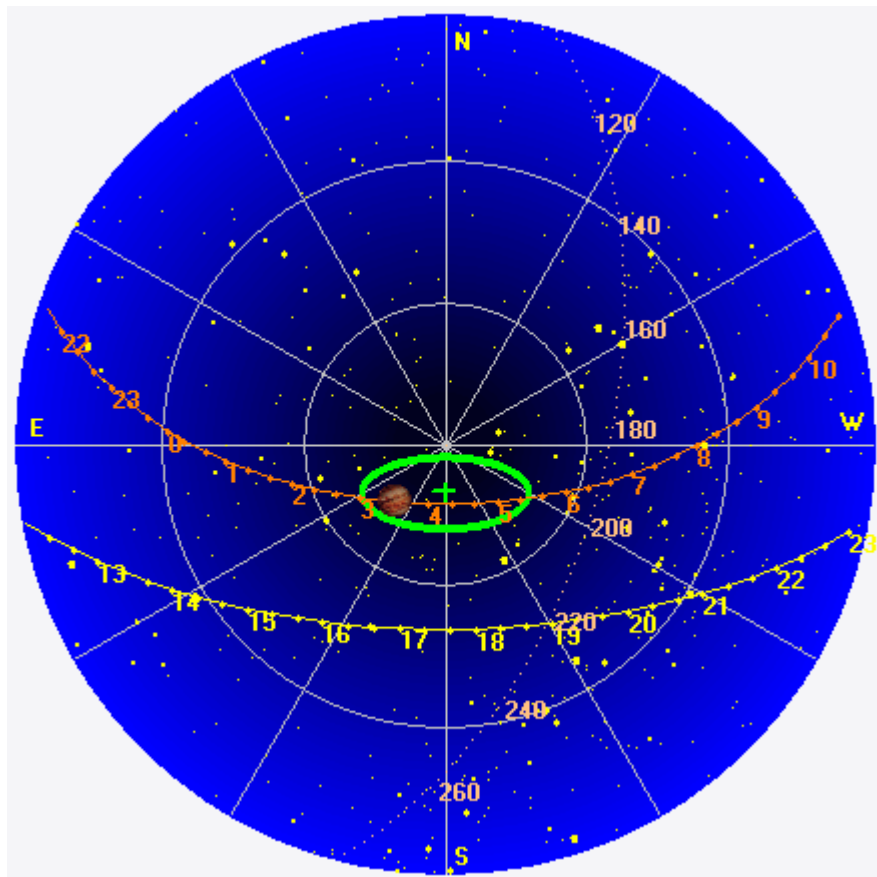
Jupiter was -27° to $+7^\circ$ off axis.

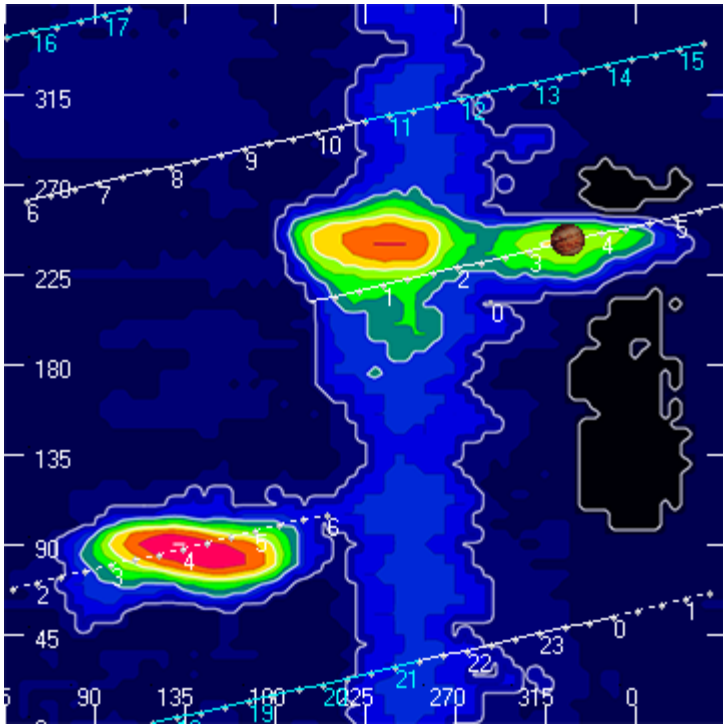
Jupiter was trailing the Sun by 157° .

--

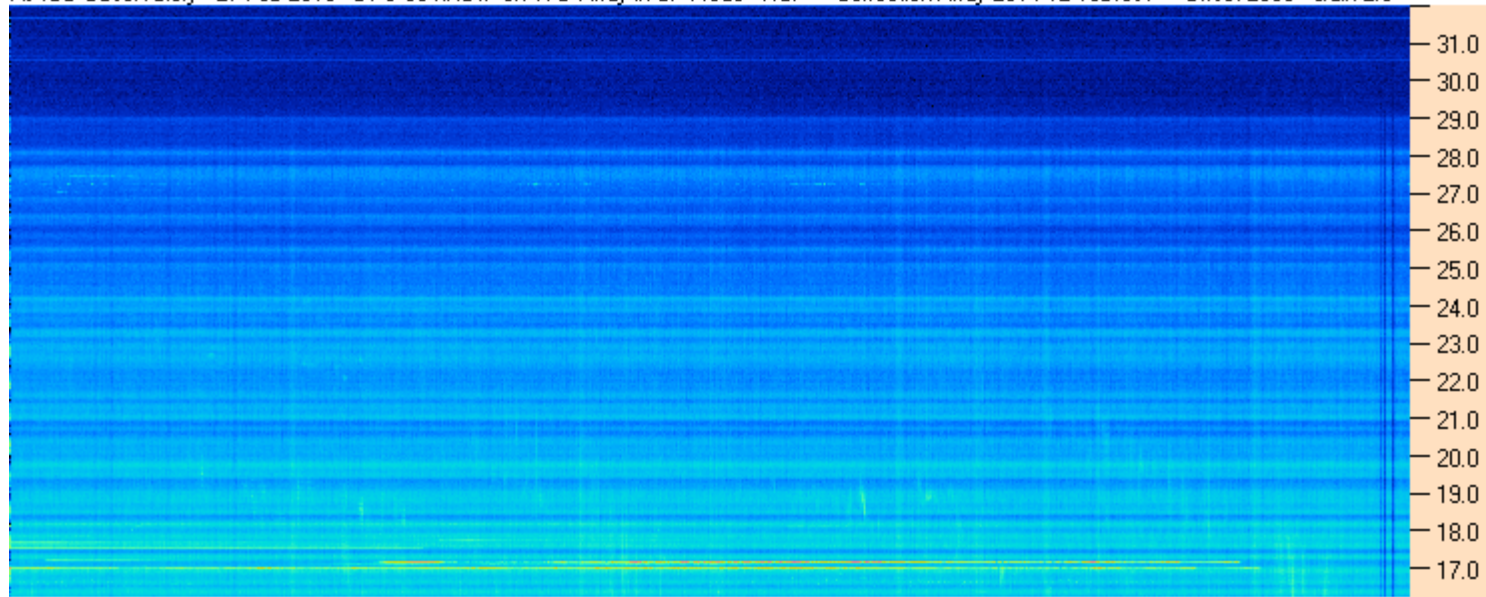
Dave

AJ4CO Observatory 27 Feb 2015, log entry 350-52





AJ4CO Observatory - 27 Feb 2015 - DPS 30 kHz IF on TFD Array in CP Mode - RCP Correction Array 2014 12 18B.csv Offset 2050 Gain 2.0



02:10:00 02:32:51 02:55:43 03:18:34 03:41:26 04:04:17 04:27:09 04:50:00

AJ4CO Observatory - 27 Feb 2015 - DPS 30 kHz IF on TFD Array in CP Mode - LCP Correction Array 2014 12 18B.csv Offset 2050 Gain 2.0

