

Subject: [radiojove-data] 27 Feb 2015 Io-A

From: Dave Typinski <davetyp@typnet.net>

Date: 03/01/2015 00:15

To: RadioJove-Data <radiojove-data@lists.nasa.gov>

Adding to Tom & Wes & Jim & David's nice reports, here's some Io-A from Friday morning.

RCP dominant L bursting from 16 to 20 MHz, vertex late arc(s).

Heavy line noise throughout. Strip charts not of much use.

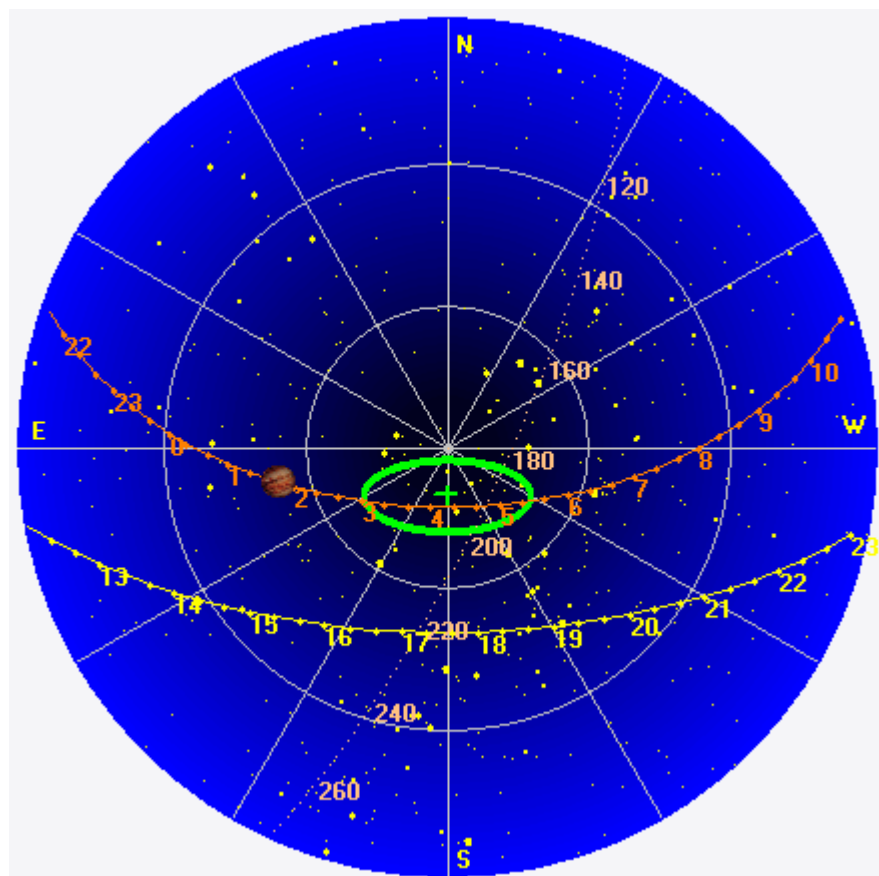
Jupiter was -38° to -32° off axis.

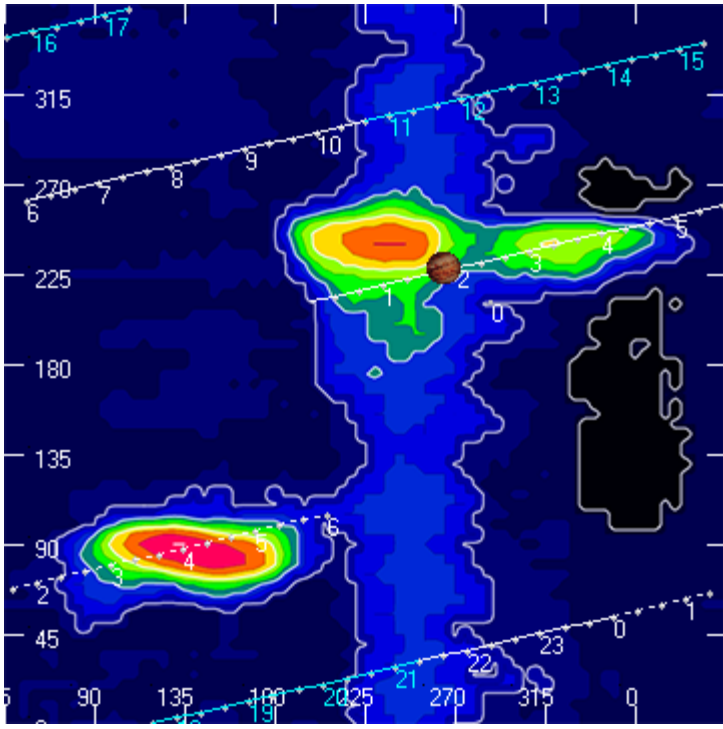
Jupiter was trailing the Sun by 157° .

--

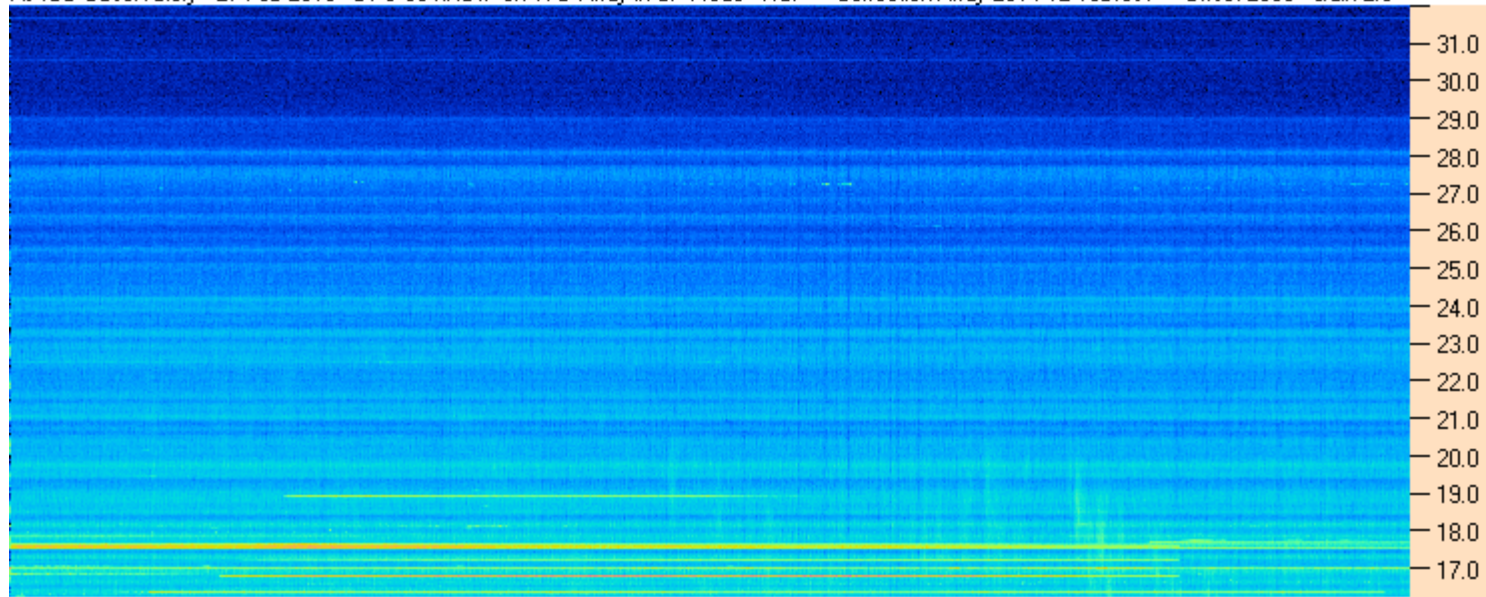
Dave

AJ4CO Observatory 27 Feb 2015, log entry 349



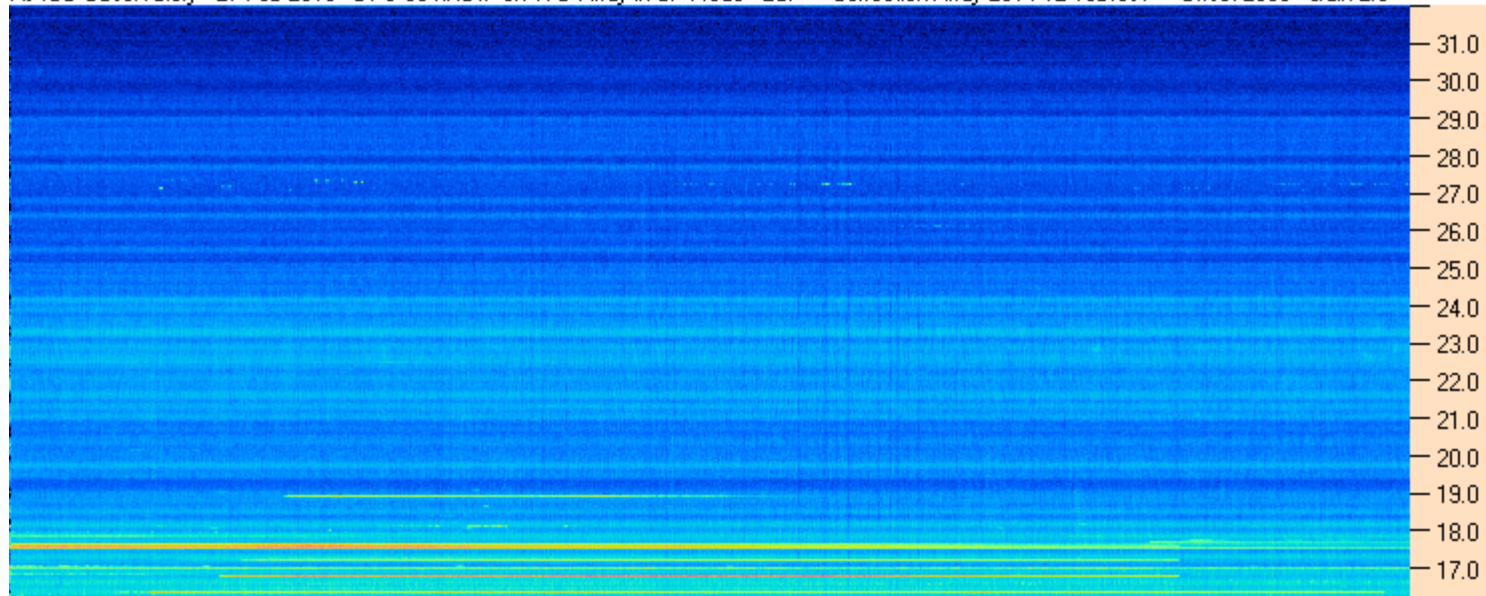


AJ4CO Observatory - 27 Feb 2015 - DPS 30 kHz IF on TFD Array in CP Mode - RCP Correction Array 2014 12 18B.csv Offset 2050 Gain 2.0



01:10:00 01:18:34 01:27:09 01:35:43 01:44:17 01:52:51 02:01:26 02:10:00

AJ4CO Observatory - 27 Feb 2015 - DPS 30 kHz IF on TFD Array in CP Mode - LCP Correction Array 2014 12 18B.csv Offset 2050 Gain 2.0



01:10:00 01:18:34 01:27:09 01:35:43 01:44:17 01:52:51 02:01:26 02:10:00

