

Subject: [radiojove-data] 25 Feb 2015 non-Io-C

From: Dave Typinski <davetyp@typnet.net>

Date: 02/27/2015 11:35

To: RadioJove-Data <radiojove-data@lists.nasa.gov>

Adding to Jim's nice report, here's some non-Io-C from Wednesday morning.

LCP dominant L bursting from 16 to 17 MHz. No modulation lanes visible.

Heavy line noise throughout.

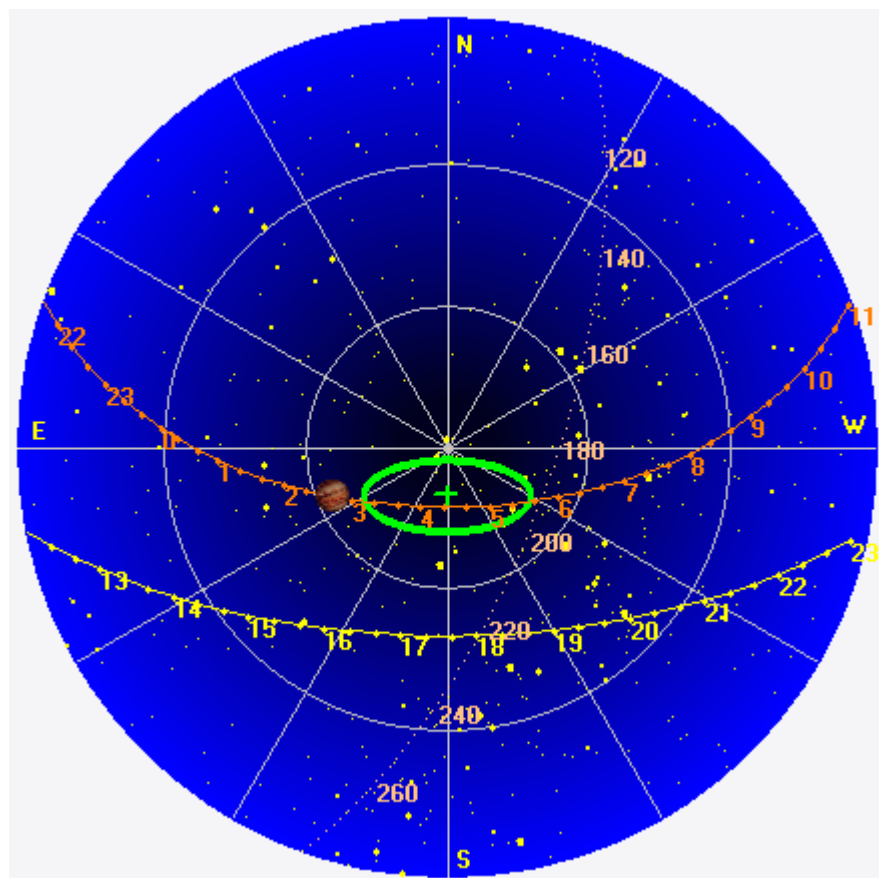
Jupiter was -26° to -21° off axis.

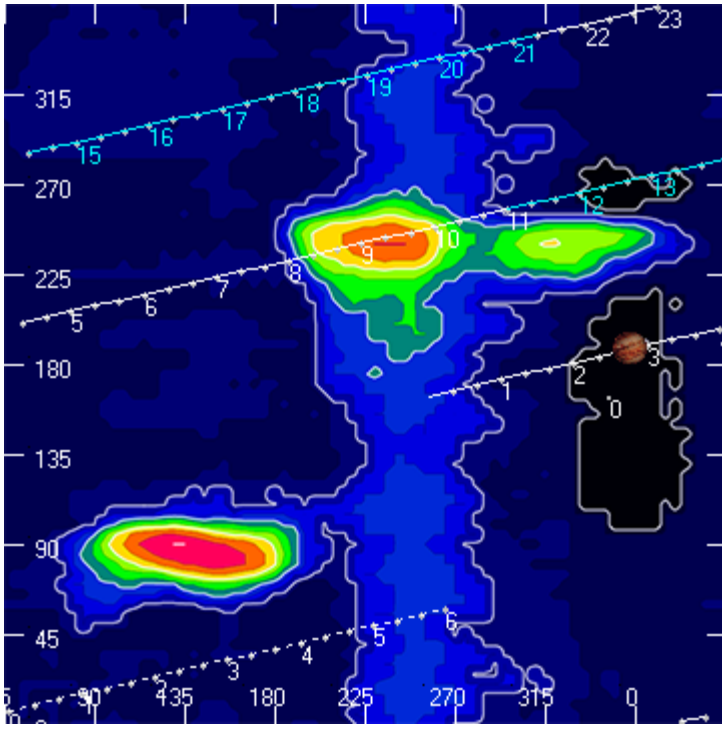
Jupiter was trailing the Sun by 159° .

--

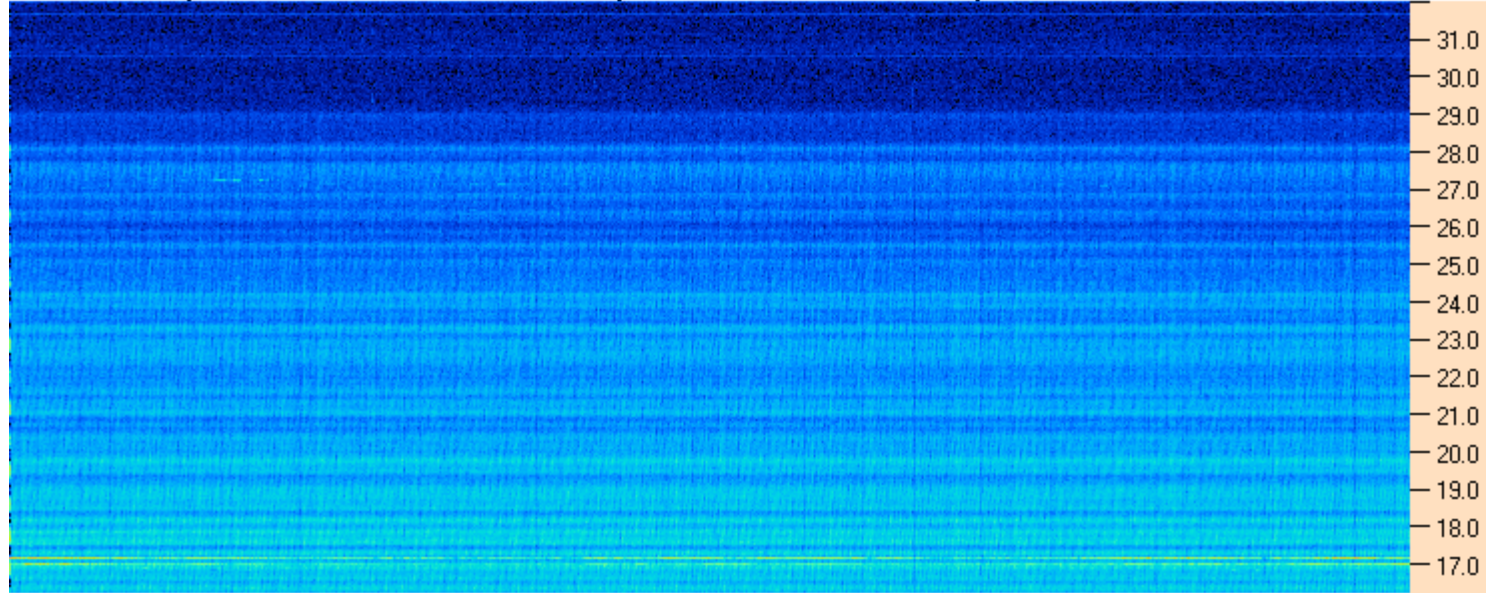
Dave

AJ4CO Observatory 25 Feb 2015, log entry 344





AJ4CO Observatory - 25 Feb 2015 - DPS 30 kHz IF on TFD Array in CP Mode - RCP Correction Array 2014 12 18B.csv Offset 2050 Gain 2.0



02:30:00 02:34:17 02:38:34 02:42:51 02:47:09 02:51:26 02:55:43 03:00:00

AJ4CO Observatory - 25 Feb 2015 - DPS 30 kHz IF on TFD Array in CP Mode - LCP Correction Array 2014 12 18B.csv Offset 2050 Gain 2.0

