

Subject: [radiojove-data] 24 Feb 2015 non-Io-A

From: Dave Typinski <davetyp@typnet.net>

Date: 02/26/2015 20:14

To: RadioJove-Data <radiojove-data@lists.nasa.gov>

Adding to Jim & Wes & Tom's nice reports, here's some non-Io-A from Tuesday morning.

RCP dominant L bursting from 16 to 27 MHz. No modulation lanes visible. Prominent vertex late arcs, more like Io-A than non-Io- emission.

Heavy line noise throughout.

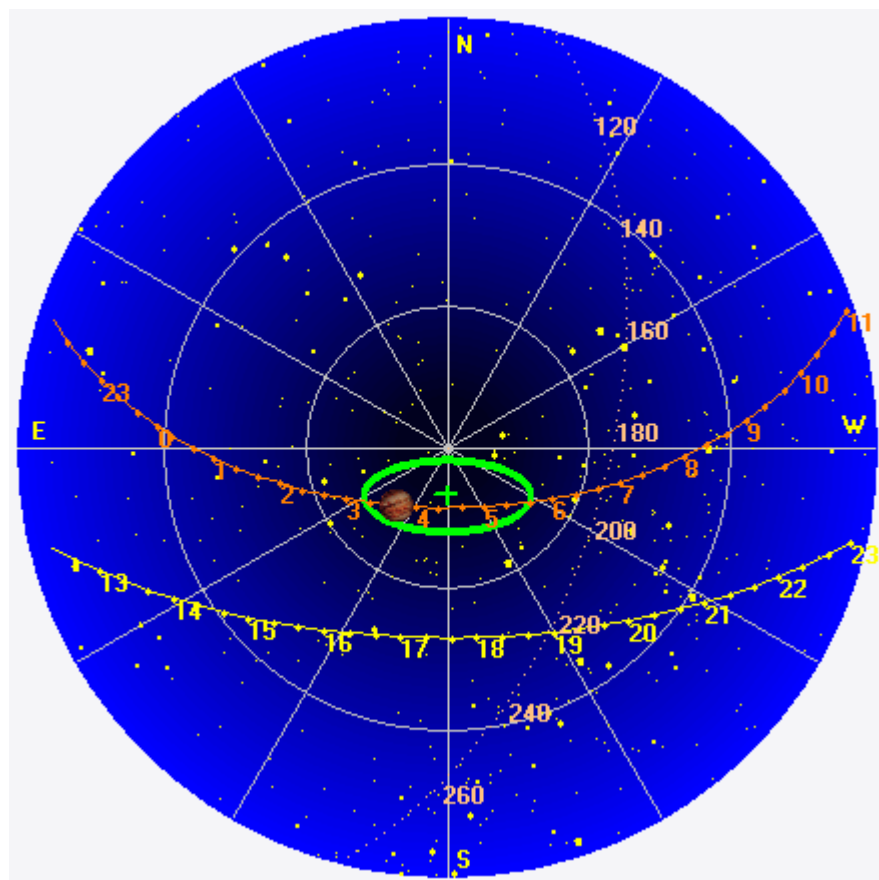
Jupiter was -20° to -2° off axis.

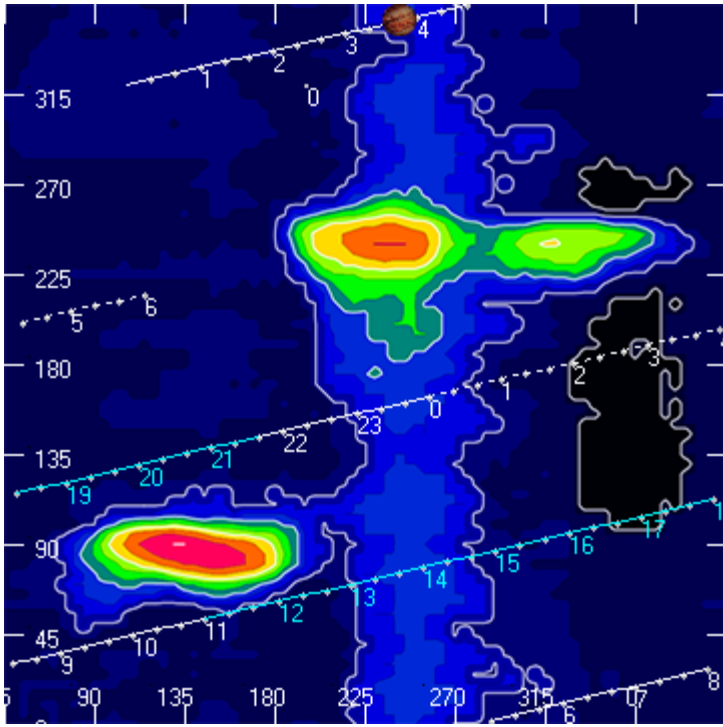
Jupiter was trailing the Sun by 160° .

--

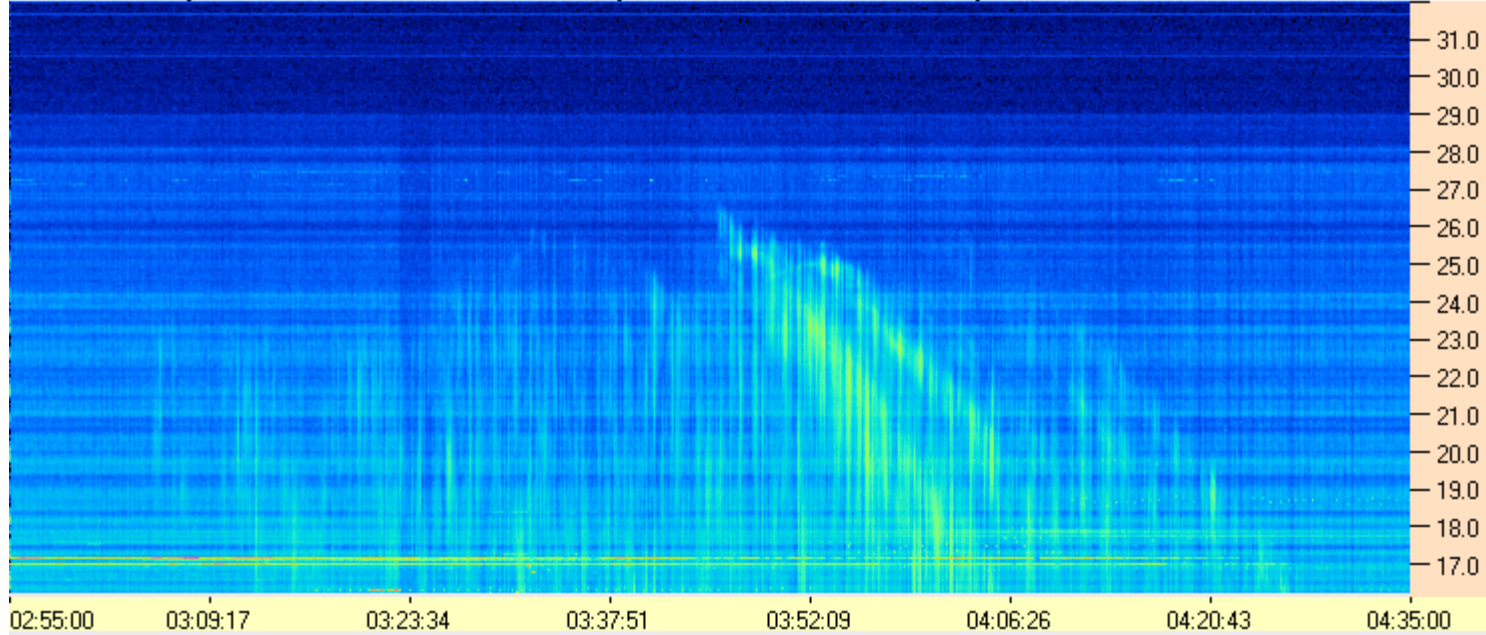
Dave

AJ4CO Observatory 24 Feb 2015, log entry 343

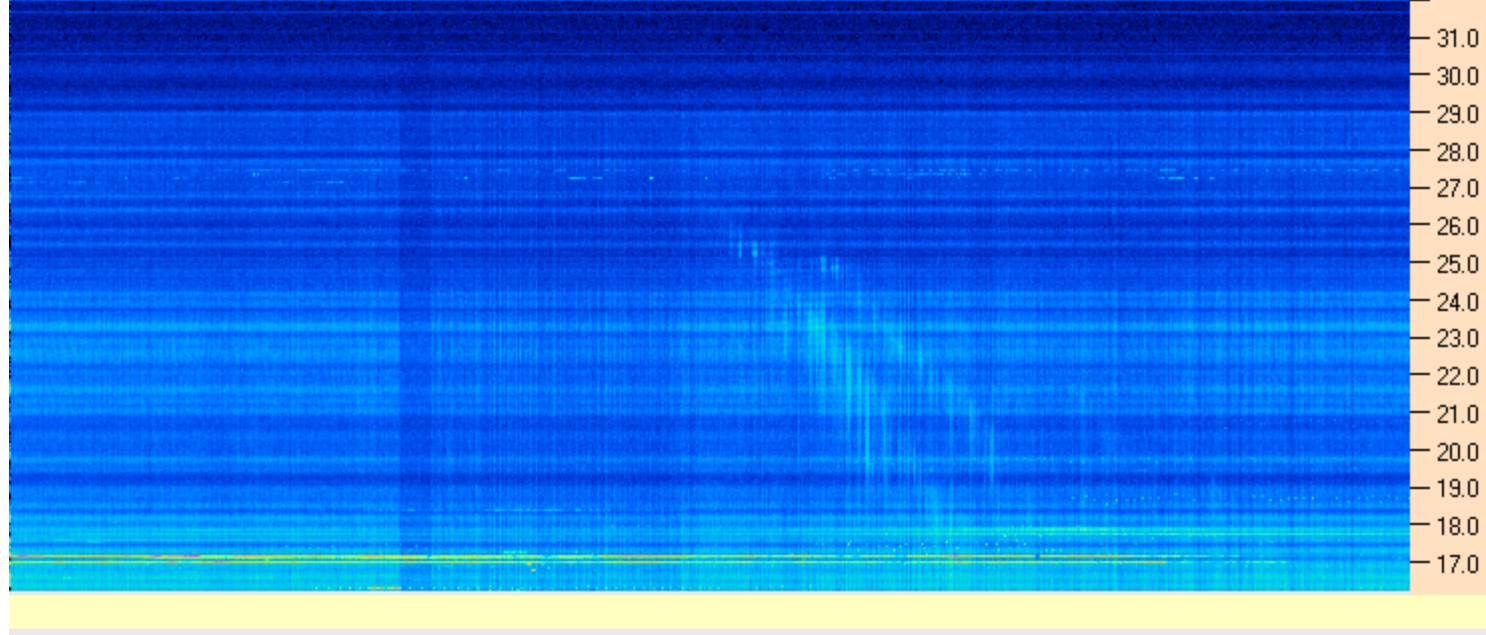




AJ4CO Observatory - 24 Feb 2015 - DPS 30 kHz IF on TFD Array in CP Mode - RCP Correction Array 2014 12 18B.csv Offset 2050 Gain 2.0



AJ4CO Observatory - 24 Feb 2015 - DPS 30 kHz IF on TFD Array in CP Mode - LCP Correction Array 2014 12 18B.csv Offset 2050 Gain 2.0



02/24/2015 by AJ4CO RSP in High Springs, FL

